

Accessibility & Connectivity

All user groups within the Wheatland community identified sidewalks as one of the top transportation barriers within the community. The users cited the narrow width, poor condition, and lack of complete segments as the main contributors to creating the barrier. Figure 9a is a map that graphically shows the existing sidewalk conditions (does not address width or accessibility) and proposed sidewalk expansion.

Sidewalks

Residents stated that they would like to see upgrades to the city's sidewalks system as one of the top priorities. They would like to have the sidewalks wider, "smoother", accessible, and integrated into the entire community in order to create a complete network throughout town, especially around the school. Figures 9b and 9d on this board illustrate the spatial requirements required and recommended for sidewalks. The majority of existing sidewalks within Wheatland are 4' wide which is the minimum width for a sidewalk.

To improve accessibility and pedestrian circulation, the design team recommends a minimum width of five foot for residential sidewalks in Wheatland, with wider widths recommended for areas where more pedestrian use is anticipated, such as along and within Lions and City Park, in the downtown, around the High School, as well as along primary corridors such as Toronto Street.

Trails

In addition to an improved sidewalk system, residents also cited a community trail which connected to Calamus as a top priority. All user groups indicated that they would like to see a trail system where they and their families could enjoy the scenic beauty and additional recreational activity. They would prefer a separated trail system where they do not have to worry about traffic.

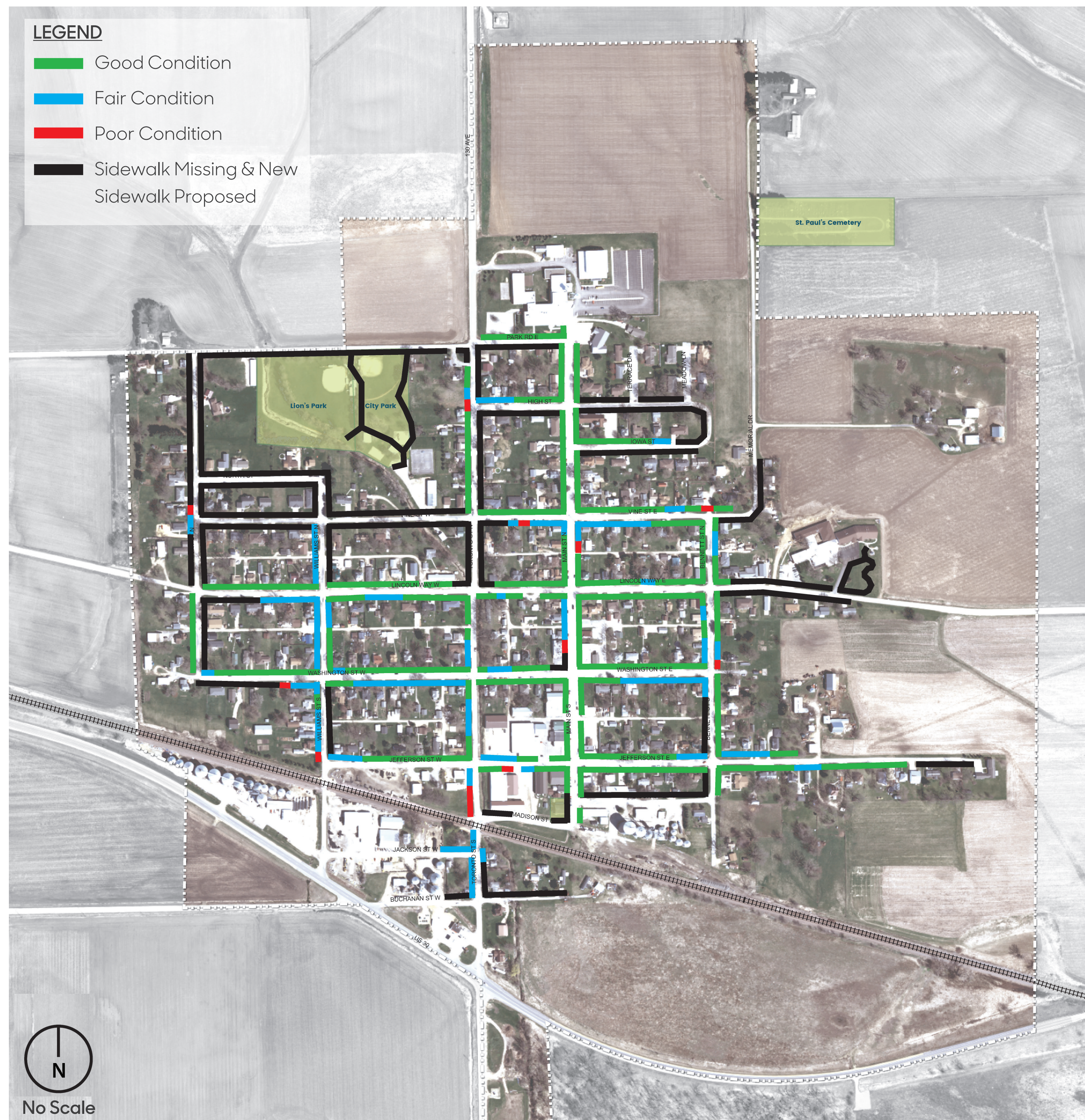


Figure 9a: Assessment of existing sidewalk condition and proposed sidewalk expansion

Pedestrian Spatial Requirements:

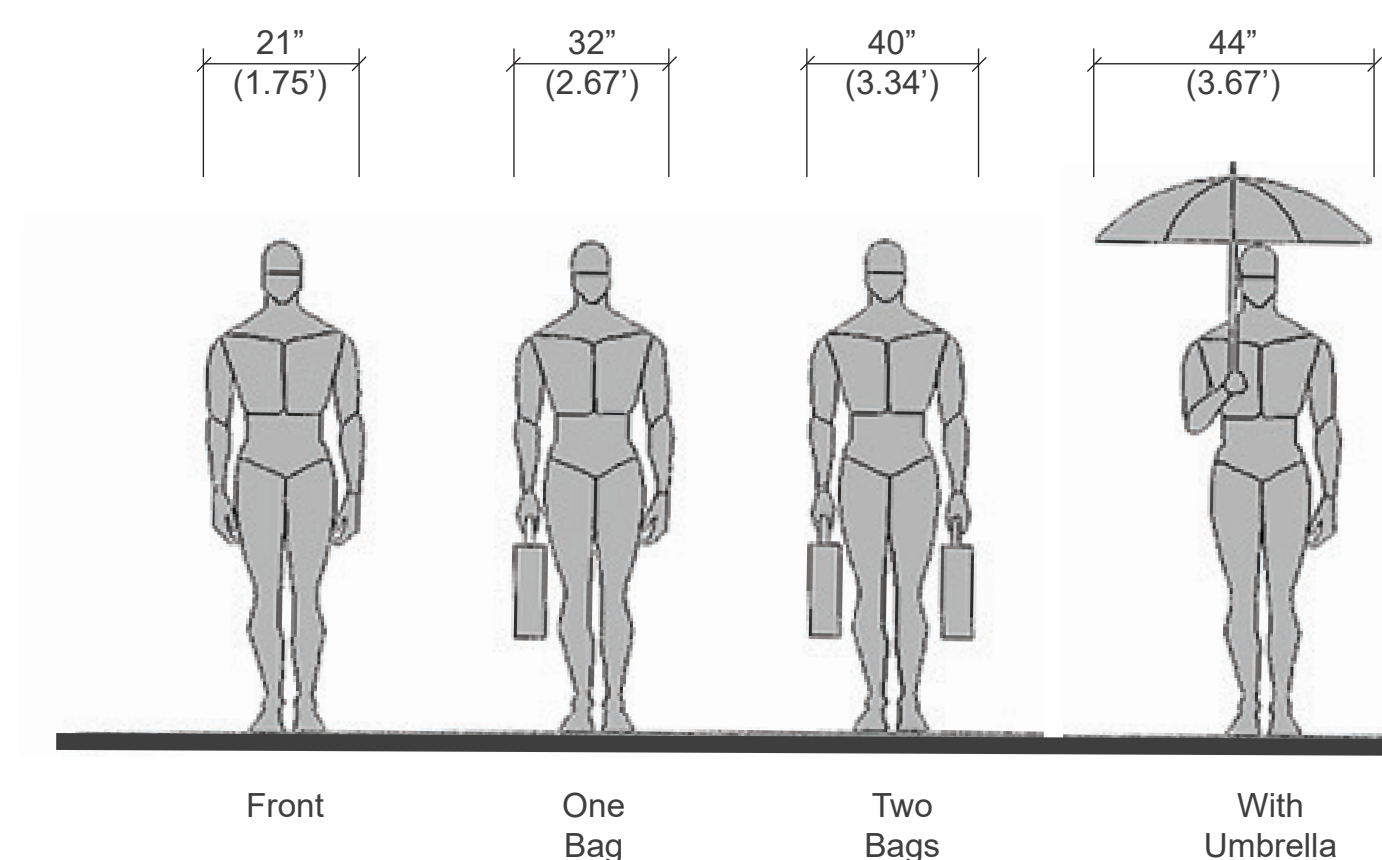


Figure 9b: Width requirements for selected pedestrian activities. Source: Time Saver Standards for Landscape Architecture.

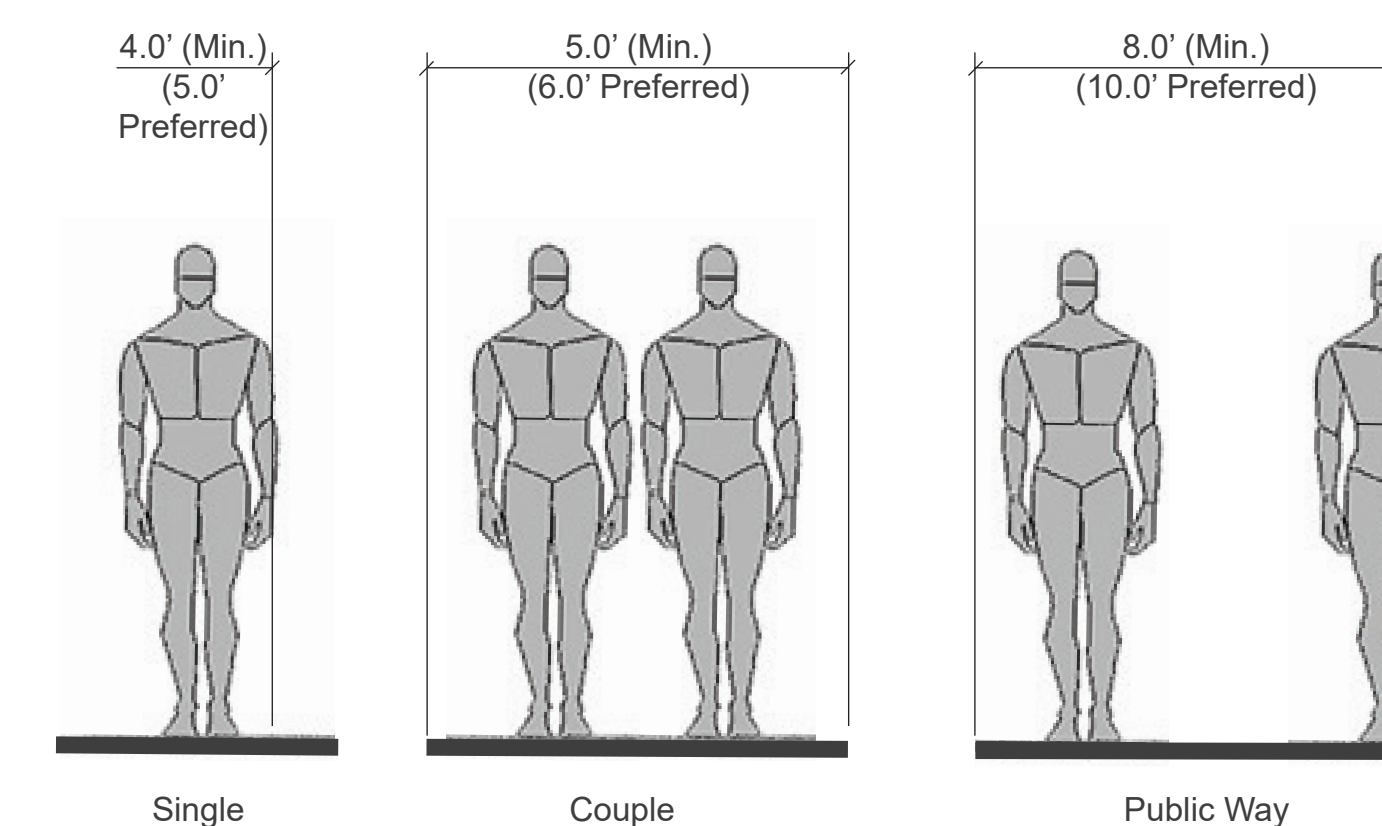


Figure 9c: Pedestrian walkway width requirements. Source: Time Saver Standards for Landscape Architecture.

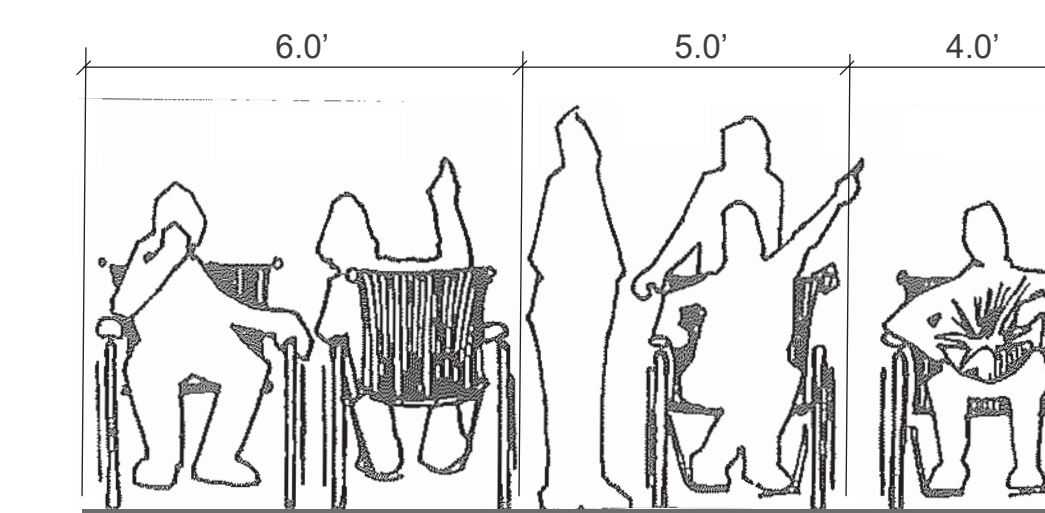


Figure 9d: Pedestrian walkway width - spatial requirements for wheelchairs. Source: Time Saver Standards for Landscape Architecture.