



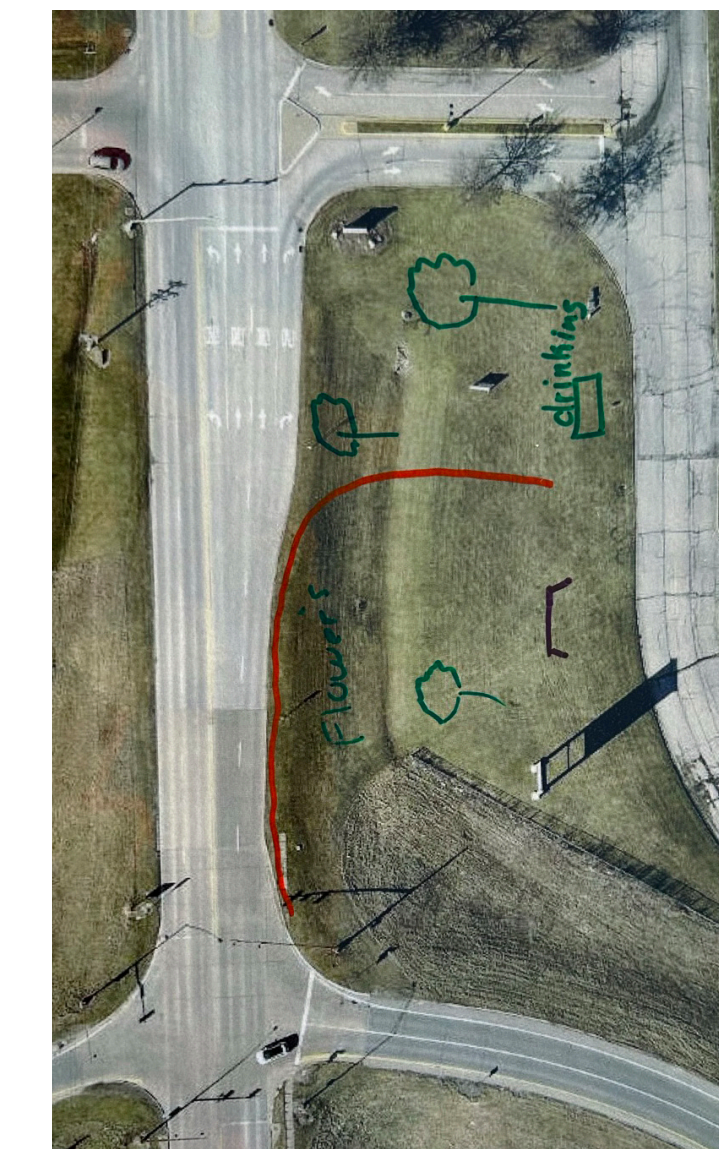
Focus Group (February 18, 2023): Focus group participants listen to questions about transportation-related assets and barriers before providing their feedback



Design Workshop (July 4, 2023): The public design workshop was held during West Burlington's annual July 4th celebration, coinciding with the fireman's annual pancake breakfast



Design workshop (July 4, 2023): Participants had the opportunity to design proposed project areas based on their preferences (see above), and fill out questionnaires and comments about desired enhancements



Design Workshop (July 4, 2023): Community members participate in the interactive design workshop and talk with the design team

Program Overview

The city of West Burlington is one of 10 communities selected to participate in the 2023 Iowa's Living Roadways Community Visioning Program.

The program, which selects communities through a competitive application process, provides professional planning and design assistance along transportation corridors to small Iowa communities (less than 10,000 residents).

Visioning Program Goals:

- Develop a conceptual plan and implementation strategies alongside local community residents.
- Enhance the natural, cultural and visual resources existing within communities.
- Assist local communities in using external funds as leverage for transportation corridor enhancement.

Each visioning community works through a planning process consisting of four phases of concept development:

1. Program initiation
2. Needs assessment and goal setting
3. Development of a concept plan
4. Implementation and sustained action

Each visioning community is represented by a steering committee of local residents and stakeholders who take part in a series of meetings that are facilitated by field coordinators from Trees Forever.

Iowa State University's Department of Landscape Architecture and ISU Extension and Outreach, of which Community Visioning is part, manage the visioning process and the design team. In addition, ISU project staff and interns conduct a bioregional assessment and public input sessions, including transportation assets and barriers (TAB) focus groups, and a random-sample survey. Iowa State University, along with Trees Forever and the Iowa Department of Transportation, select private-sector Professional Landscape Architects (PLA) to be part of the design team and work with the various communities in creating their "community vision" and transportation enhancement plan.

Iowa State University processes the information collected from the focus groups and surveys and provides the data to the steering committee and design team for their use in developing community-centered transportation enhancements based on the needs and desires expressed by residents participating in the focus groups and the public design workshop.

The Community Visioning program is sponsored by the Iowa Department of Transportation.

Community Goals

The steering committee identified a number of goals and priority areas during the visioning process, that are reflective of what residents identified during their participation in the TAB workshops. The community goals focused on four main initiatives:

- Improve pedestrian connectivity and accessibility
- Implement branded way-finding to enhance the community's identity, user experience, and streetscape aesthetics
- Enhance the West Burlington trail system by 1) extending it to create a connected system within the community, 2) connecting it to the regional Flint River Trail, 3) adding additional site amenities such as benches and shade trees to improve user comfort, and 4) creating a trailhead

Refer to board 6, "What, Where, & Why," for further details related to the main community goals summarized above.

Capturing the West Burlington Vision

Based on the needs and desires of the local residents, as well as a detailed inventory of community resources, the design team developed transportation-based community improvement project concepts, which are illustrated in the following set of presentation boards:

1. Program Overview
2. Bioregional Assessments
3. Transportation Assets and Barriers
4. Transportation Behaviors and Needs
5. Transportation Inventory & Analysis
6. What, Where, & Why
7. Concept Plan
8. Community Identity & Entryways
9. Accessibility & Safety
10. Trailhead

West Burlington Program Overview

Flenker Land Architects Consultants, LLC

LA: Meg Flenker, PLA, CPESC, CPSWQ

Interns: Mikky Ojha, Trevor Smith

Iowa State University | Trees Forever | Iowa Department of Transportation

