

Legend

1. Proposed band shell renovation

2. Proposed accessible seating for the band shell

3. Proposed seating on the lawn

4. Proposed sidewalk with stairs to restroom

5. Proposed 8' sidewalk to band shell

6. Proposed ages 5-9 playground equipment
7. Proposed ages 2-5 playground equipment

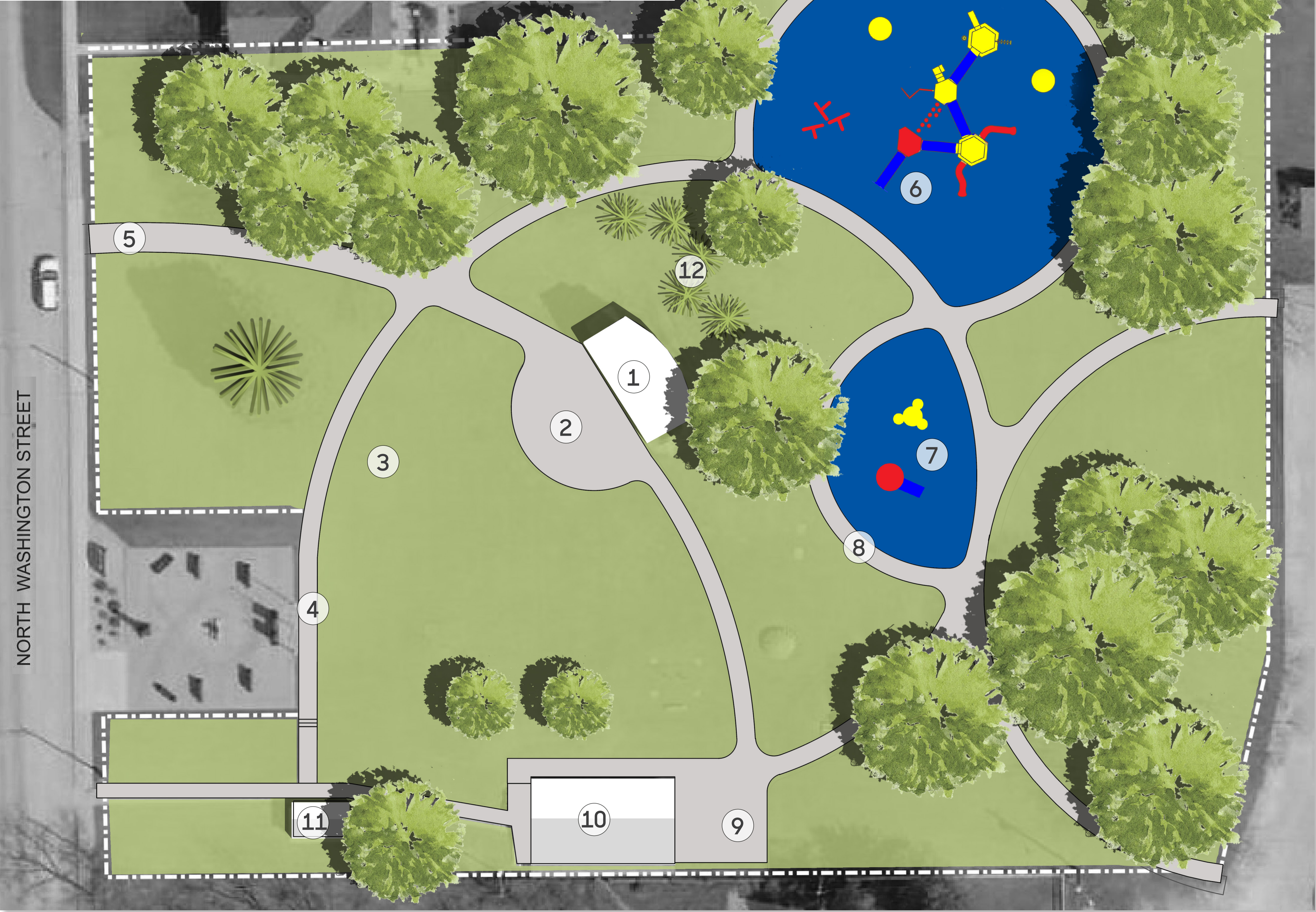
8. Proposed perimeter sidewalk with benches

9. Proposed outdoor picnic & grill area

10. Existing shelter

11. Existing restroom

12. Proposed evergreen screen plantings



Proposed City Park concept plan shows improvements to circulation and amenities

Wellsburg

City Park Improvements

RITLAND+KUIPER Landscape Architects

Landscape Architects: Craig Ritland, FASLA, & Samantha Price, PLA
Landscape Architecture Intern: Mallory Sage

Iowa State University | Trees Forever | Iowa Department of Transportation

City Park Improvements

Wellsburg City Park is set back from County Road T19, which runs north-south, bisecting the park from the community. Access to and through the park is an issue for residents. Most of the residences are on the west and south sides of County Roads T19 and D25 and there are limited designated pedestrian crossings on either of these busy roads, making crossing difficult. Access through the park is impossible for anyone with mobility issues because most of the park amenities are stand alone with no connecting sidewalks. Residents would like to see a paved surface through the park and new play equipment (reference: Emerging Themes, 3c). The Wellsburg City Park concept shows an ADA-accessible sidewalk system that would connect all the amenities in the park. Upgraded

playground equipment designated for ages 2-5 and ages 5-9 replaces the existing outdated playground. The visioning committee plans to renovate the existing band shell with fundraising already underway for the project. Accessible seating is proposed, in addition to utilizing the existing grades for amphitheater-style seating on the lawn. Additional evergreen plantings behind the band shell provide a screen from the proposed playground and add to the ambience of the band shell. The committee is already working with Miracle Recreation for playground equipment and safety surfacing. The addition of paved surfacing to the equipment ensures everyone in the community has access to a fun and inviting playground.



Top left: Existing band shell in Wellsburg City Park
Bottom: Proposed band shell renovation with accessible seating & evergreen screen plantings