



Existing Hwy 61

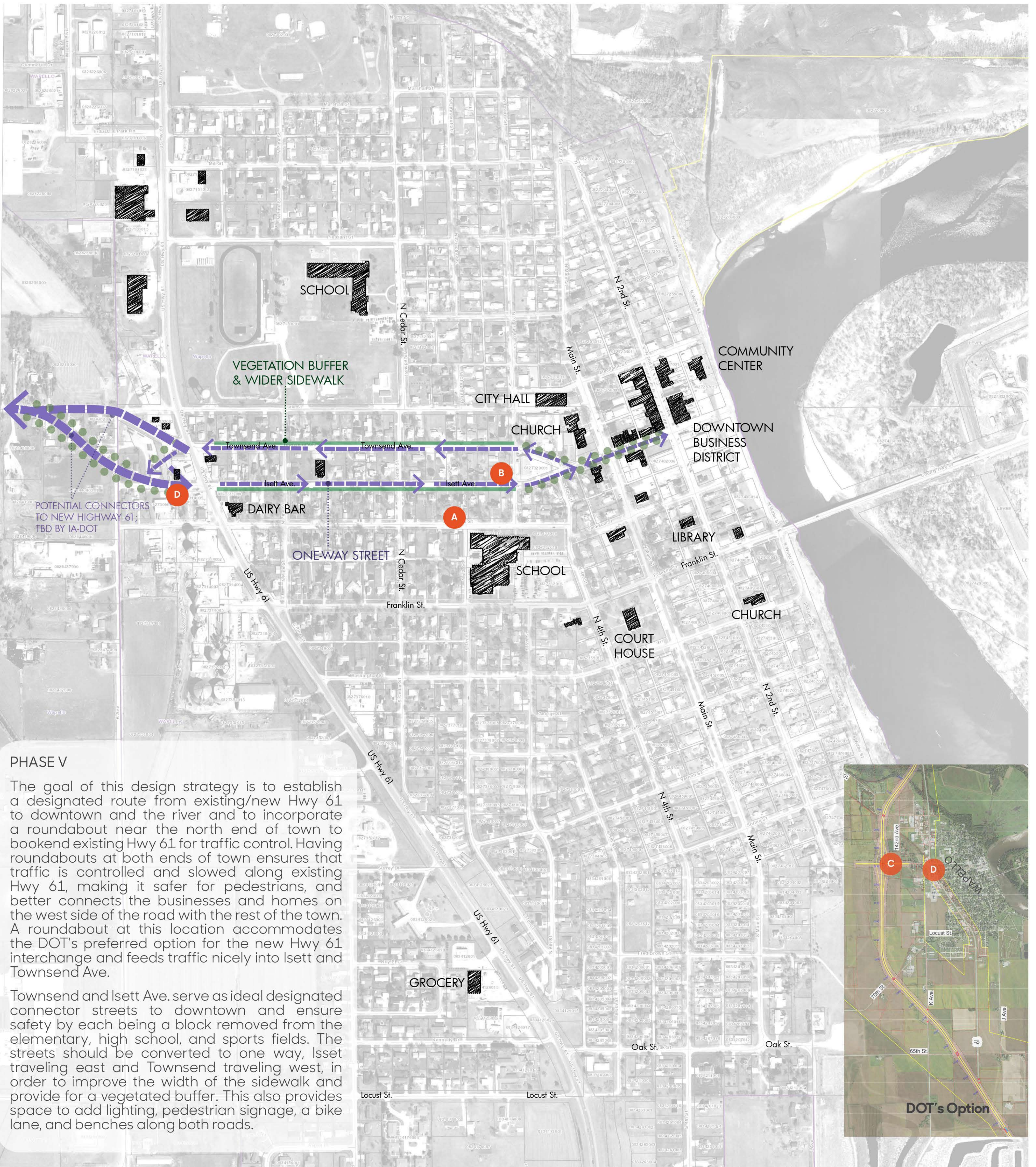


Existing Hwy 61 & G62



Existing condition diagrams of Townsend and Isett Avenue

“One of the biggest problems I see is on 61... some of th[ose] side streets are hard to see who’s coming and where they’re coming from, and 61 is always busy.”



PHASE V

The goal of this design strategy is to establish a designated route from existing/new Hwy 61 to downtown and the river and to incorporate a roundabout near the north end of town to bookend existing Hwy 61 for traffic control. Having roundabouts at both ends of town ensures that traffic is controlled and slowed along existing Hwy 61, making it safer for pedestrians, and better connects the businesses and homes on the west side of the road with the rest of the town. A roundabout at this location accommodates the DOT’s preferred option for the new Hwy 61 interchange and feeds traffic nicely into Isett and Townsend Ave.

Townsend and Isett Ave. serve as ideal designated connector streets to downtown and ensure safety by each being a block removed from the elementary, high school, and sports fields. The streets should be converted to one way, Isett traveling east and Townsend traveling west, in order to improve the width of the sidewalk and provide for a vegetated buffer. This also provides space to add lighting, pedestrian signage, a bike lane, and benches along both roads.



NOTE: Each phase, priority, and time line is intended to be flexible as determined by the community. Phases and timelines are intended only to demonstrate how large-scale improvements can be achieved by implementing small-scale projects strategically over time to achieve broader reaching goals.

Wapello
Phase V Board 1 of 2
 Easement Improvements To Designate
 Clear Route To Downtown/River
 25-50 Years

Steve Ford Landscape Architecture
Martin Gardner Architecture
 Landscape Architect: Steve Ford/Designer: Michael LeClere
 Intern: Wan Wei
 Iowa State University | Trees Forever | Iowa Department of Transportation

Iowa's Living Roadways
community
VISIONING