



Council Bluffs Gateway  
Council Bluffs, IA



Light up bridge over Des Moines River, IA

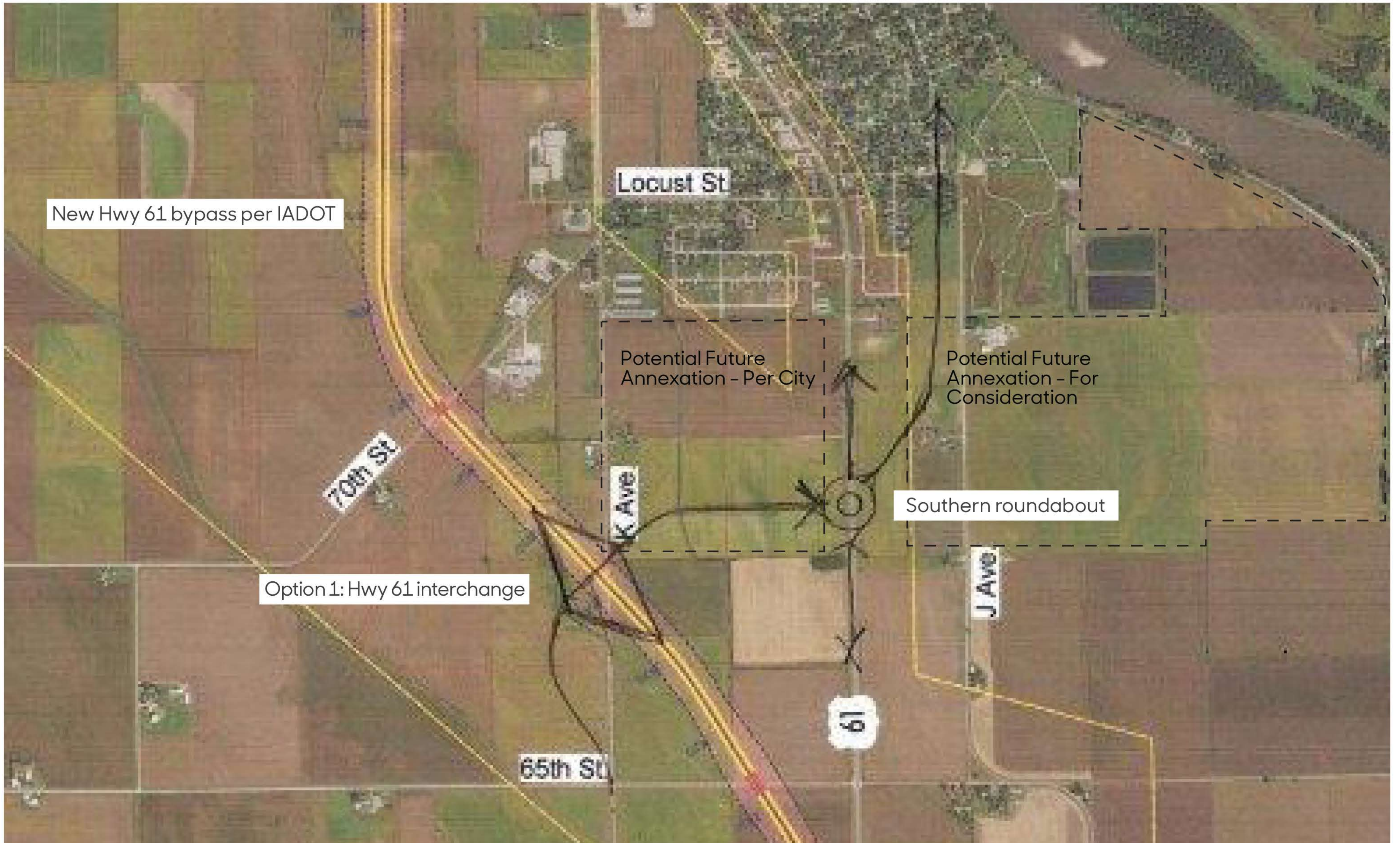


Treelined street in Pacific City, OR



Treelined street in Heber City, UT

**A Option 1: New Hwy 61 Interchange with Proposed Roundabout and Future Wapello Annexation**



NOTE: Each phase, priority, and time line is intended to be flexible as determined by the community. Phases and timelines are intended only to demonstrate how large-scale improvements can be achieved by implementing small-scale projects strategically over time to achieve broader reaching goals.

**Wapello**  
Phase IV Board 2 of 2  
Domesticate Hwy 61 and Enhance  
Franklin St.  
10-25 Years

**Steve Ford Landscape Architecture**  
**Martin Gardner Architecture**  
Landscape Architect: Steve Ford/Designer: Michael LeClere  
Intern: Wan Wei  
Iowa State University | Trees Forever | Iowa Department of Transportation

