

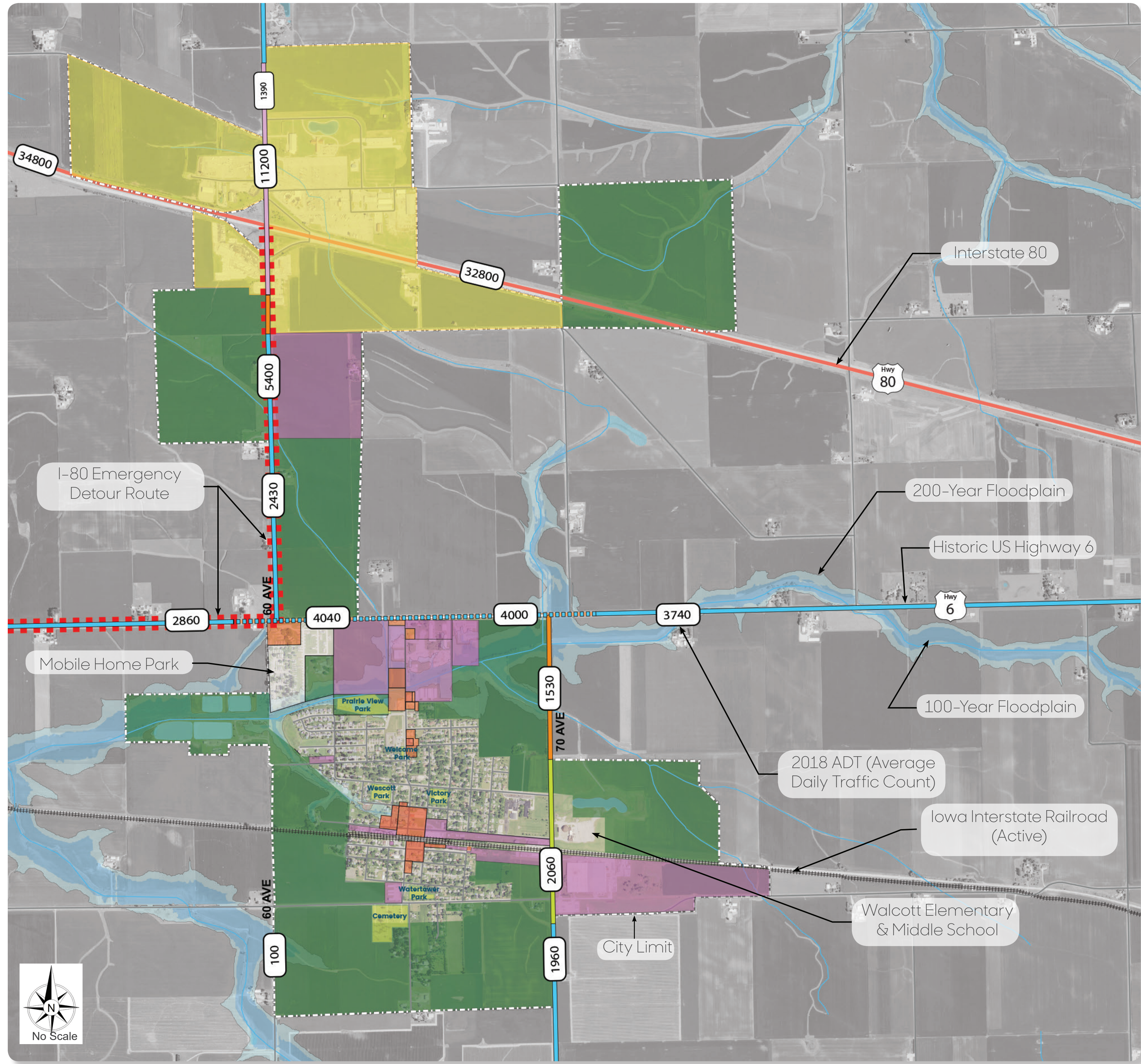
Legend

City Zoning

- Industrial Distirct
- Highway Commercial
- Suburban Agricultural District
- Neighborhood Business District
- Central Business District
- Residential District

Primary Streets Speed Limits

- 30 MPH
- 35 MPH
- 45 MPH
- 50 MPH
- 55 MPH



Overall map of Walcott highlighting the existing zoning, Iowa Department of Transportation traffic counts, and posted speed limits

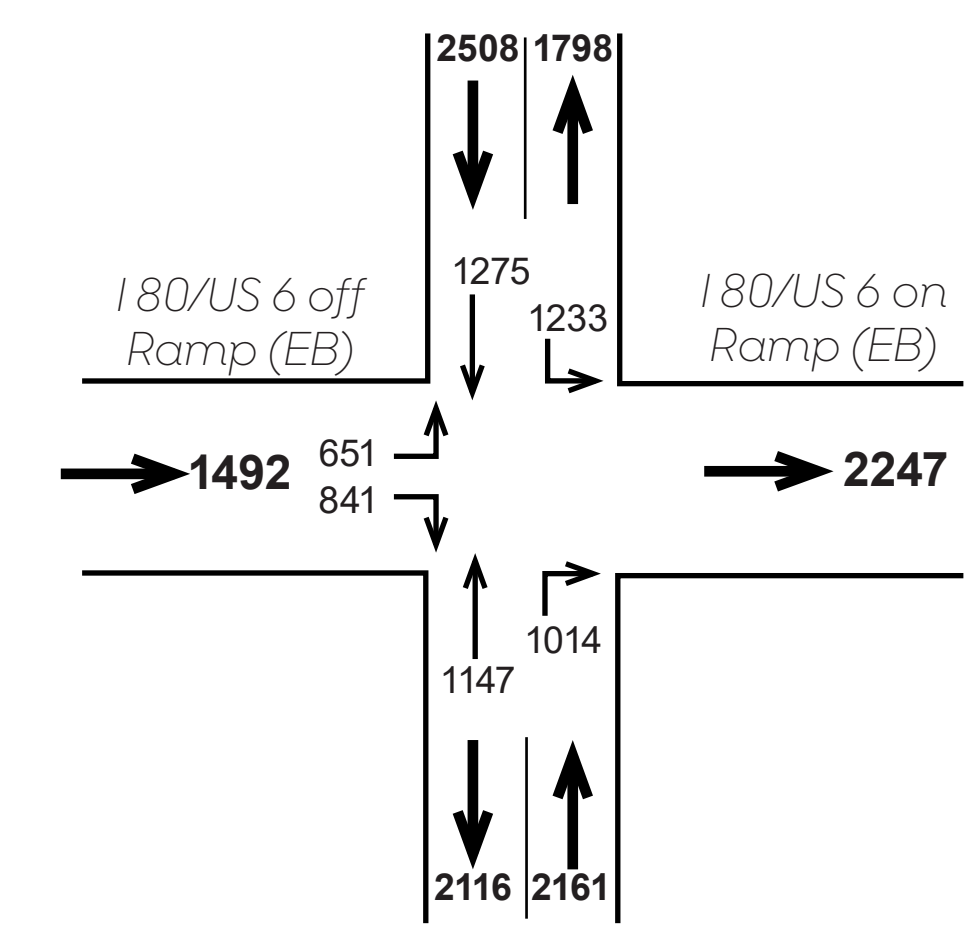
Transportation Inventory

Knowledge of the transportation systems in and around a community is critical for sustainable transportation enhancement planning. Walcott's transportation system includes roadways, sidewalks, a recreational trail, and an operational railroad (Iowa Interstate Railroad).

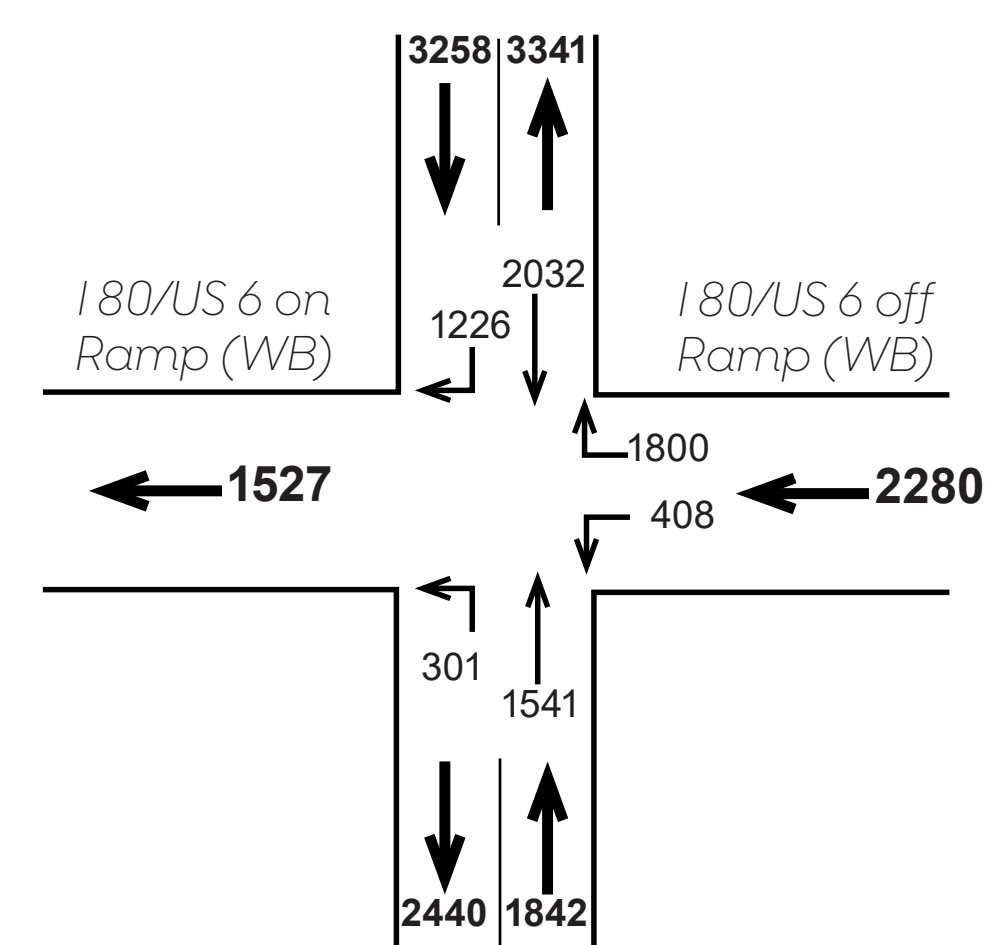
The Walcott visioning design team met with the Iowa Department of Transportation (IDOT) personnel and local officials to identify existing, past, and future transportation system capital improvements, maintenance, and other transportation-related constraints and opportunities in the Walcott area.

Several transportation-related assets and opportunities include destinations and activities such as the Prairie View Recreational Trail, the various parks throughout the city, and the Walcott Coliseum. The city's close proximity to the I-80 corridor and location along the Historic Highway 6 were also identified as assets.

Items of concern related to Walcott's transportation systems include incomplete sidewalks, congestion of traffic along E. James St. and Century St. near the elementary/middle school during school dismissal, speeding along E. James St. and the intersection crossing at James St. and Main St. Also of concern is identifying the heart of Walcott to I-80 passersby and creating visual connectivity from the I-80 truck stop to the city.



Turning Movement Traffic Count Summary-2018 Annualized Daily Traffic For Passenger Vehicles



Turning Movement Traffic Count Summary-2018 Annualized Daily Traffic For Passenger Vehicles



Transportation Inventory 1

Flenker Land Architecture Consultants, LLC
 Landscape Architect: Meg K. Flenker, PLA, ASLA, CPESC, CPSWQ
 Interns: Haoyue (Karma) Yang and Jue Jue (JJ) Wai Hin Thaw
 Iowa State University | Trees Forever | Iowa Department of Transportation

