

Aerial photo of existing Water Tower Park

Water Tower Park

Water Tower Park is located on the south side of Walcott on the northeast quadrant of the intersection of S. Main St. and E. Memorial Drive, both primary corridors. The existing park is a large open greenspace that is primarily used for various sport activities. There is also an existing playground located on the southwest corner of the park.

The design team was asked to create a space that could accommodate additional baseball fields and soccer fields. The steering committee also envisioned the abandoned well house being renovated to serve as a restroom and concession stand. The committee was also interested in finding a location at this park or another park for a proposed outdoor stage/band stand.

While the site is not large enough to accommodate multiple regulation sized sport fields, the large open space can serve as a transitional space for various types of fields when needed. The concept plan illustrates the layout for a 50' baseball field, U-11 sized soccer field and T-ball field.

Due to the parks location, size, and layout, it provides a suitable location for an outdoor stage/bandstand. The stage/bandstand is proposed to be located on the northeast corner of the park where it will open up to the southwest in order to project any sound away from the adjacent residences. This orientation also minimizes issues with the sun being in the eyes of the spectators.

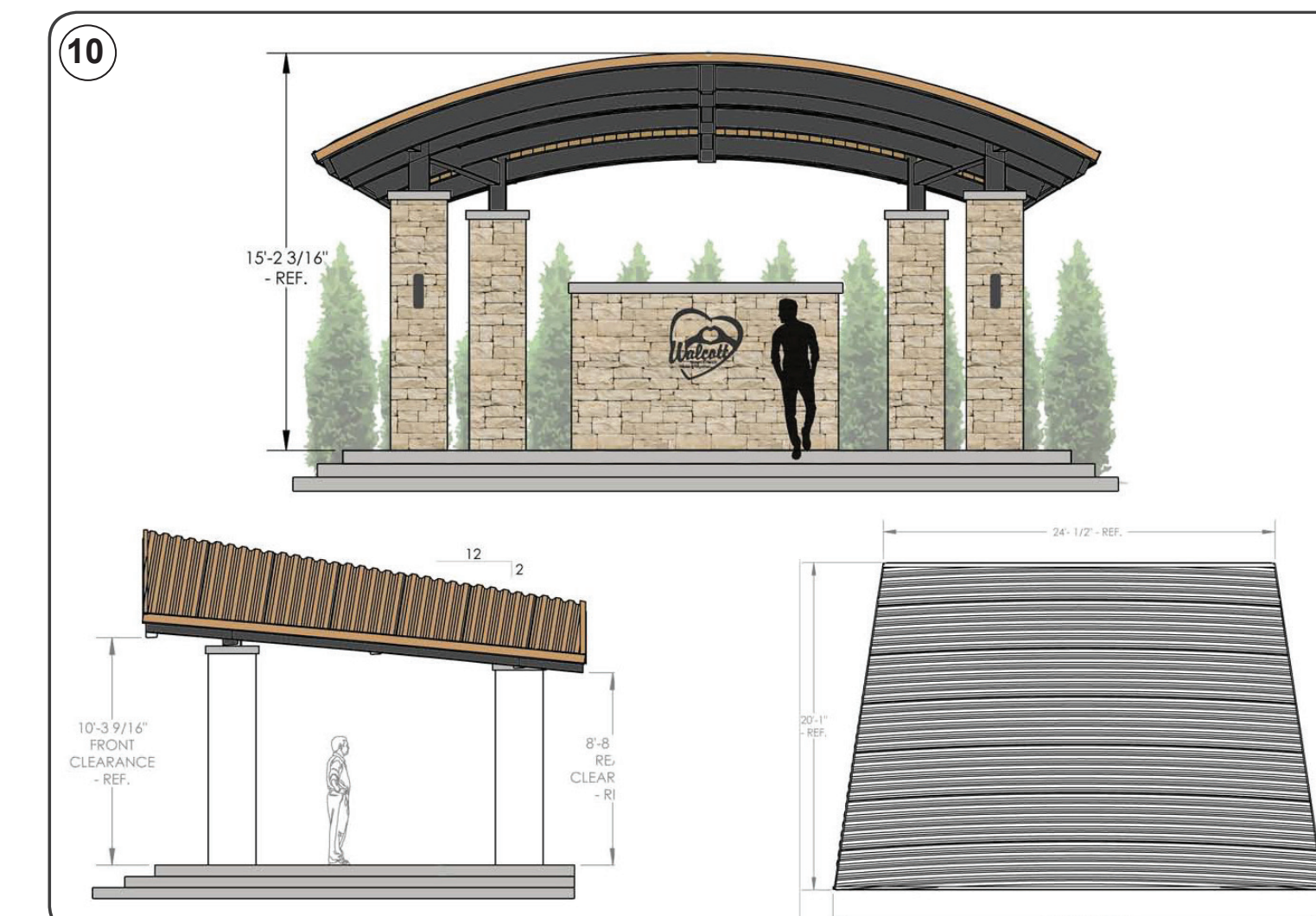


The proposed Water Tower Park Enhancement Concept Plan provides a number of different opportunities to enjoy and utilize the park

Drawing Notes For Water Tower Park Concept Plan

- ① DECORATIVE PEDESTRIAN PAVEMENT LEADING TO THE BIKE PARKING AND PLAYGROUND. BENCHES LOCATED AROUND PERIMETER OF PLAYGROUND.
- ② BIKE PARKING AREA
- ③ COLORED RUBBERIZED PLAYGROUND SURFACING FOR UNDER PLAYGROUND EQUIPMENT AND LARGE ADIRONDACK CHAIR
- ④ LOCATION FOR POSSIBLE PEDESTRIAN SHELTER FOR SCHOOL BUS PICK-UP
- ⑤ EXISTING ABANDONED WELLHOUSE RENOVATED TO SERVE AS A RESTROOM AND CONCESSION STAND
- ⑥ PARK IDENTITY SIGNAGE (REFER TO BOARD 8); SUGGEST ONE FOR SE CORNER
- ⑦ PAVED PARKING LOT WITH STALLS DELINEATED AND REQUIRED NUMBER OF ADA COMPLIANT STALLS (MARKED AND SIGNED)
- ⑧ EXISTING SHADE TREES PRESERVED AND INTEGRATED INTO PARKING ISLANDS
- ⑨ STREET/ORNAMENTAL TREES TO PROVIDE BUFFER BETWEEN PARKING LOT AND SPORTS FIELD
- ⑩ OUTDOOR STAGE/BAND STAND (SCHEMATIC DRAWING BY OTHERS)

- ⑪ OPEN LAWN AREA FOR SEATING DURING PERFORMANCES AT THE OUTDOOR STAGE/BAND STAND AND FOR GENERAL USE
- ⑫ RESTROOMS
- ⑬ WOODY VEGETATIVE BUFFER ALONG THE EASTERN PARK PROPERTY LINE THAT IS ADJACENT TO RESIDENTIAL PROPERTIES
- ⑭ OPEN GRASS AREA FOR PLAYING BOTH ORGANIZED AND UNORGANIZED ACTIVITIES
- ⑮ GATHERING AREA WITH SHADE STRUCTURE
- ⑯ T-BALL FIELD (PART OF TRANSITION FIELD WITH ⑰)
- ⑰ OPEN FIELD THAT CAN BE CONVERTED FROM U-11 SOCCER FIELD TO A NON-REGULATION SIZED BASEBALL FIELD (TRANSITION FIELD)
- ⑱ SEATING FOR PLAYERS
- ⑲ MOVABLE BLEACHERS FOR SPECTATORS
- ⑳ BENCHES LOCATED ALONG THE PARK'S PERIMETER SIDEWALK ON BENCH PADS ADJACENT TO THE SIDEWALK



Walcott Water Tower Park

Flenker Land Architecture Consultants, LLC

Landscape Architect: Meg K. Flenker, PLA, CPESC, CPSWQ
 Interns: Haoyue (Karma) Yang and Jue Jue (JJ) Wai Hin Thaw
 Iowa State University | Trees Forever | Iowa Department of Transportation

