

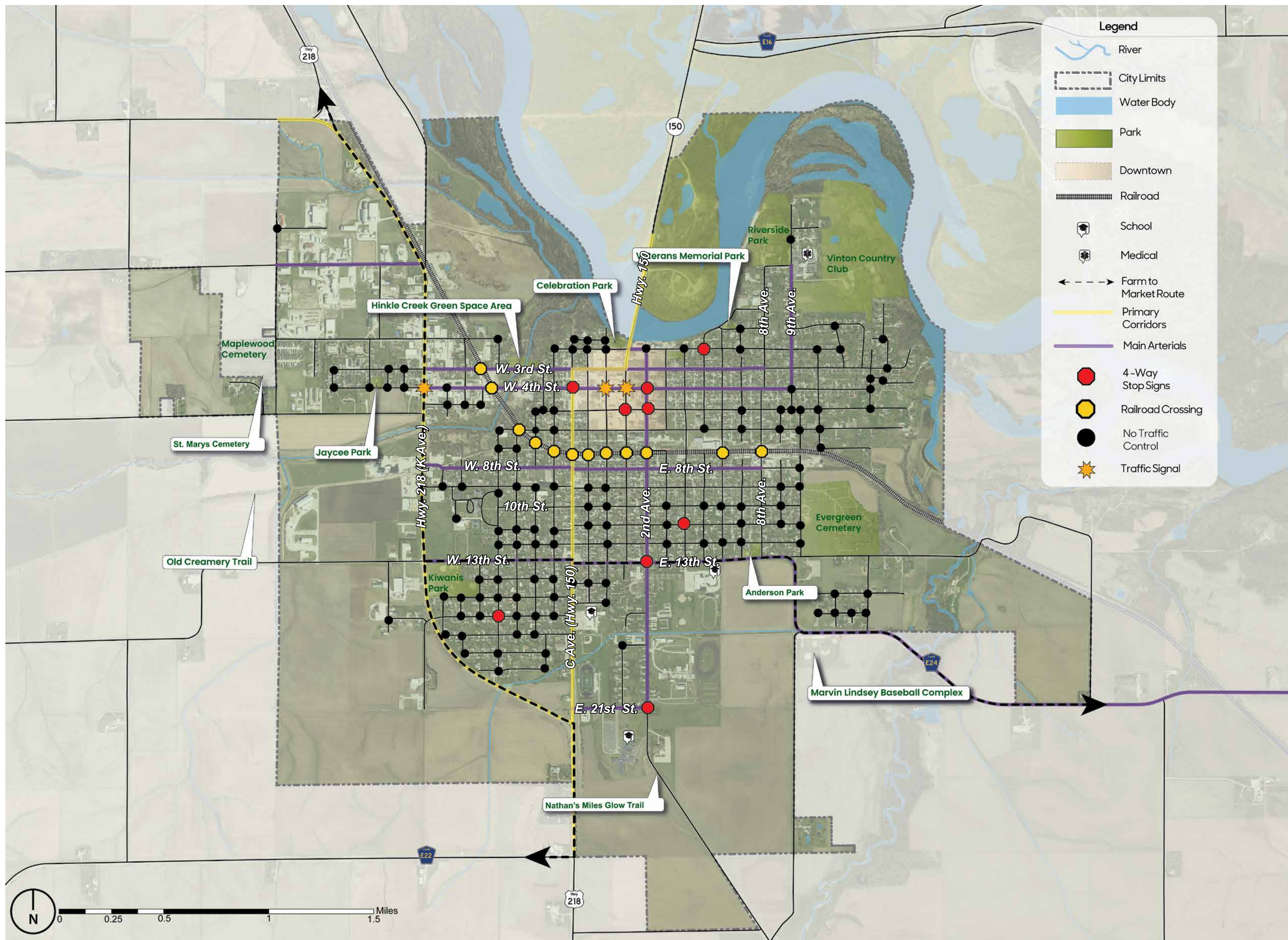
### Transportation Inventory

Knowledge of the transportation systems in and around a community is critical for sustainable transportation enhancement planning. Vinton's transportation system includes roadways, sidewalks, and recreational trails.

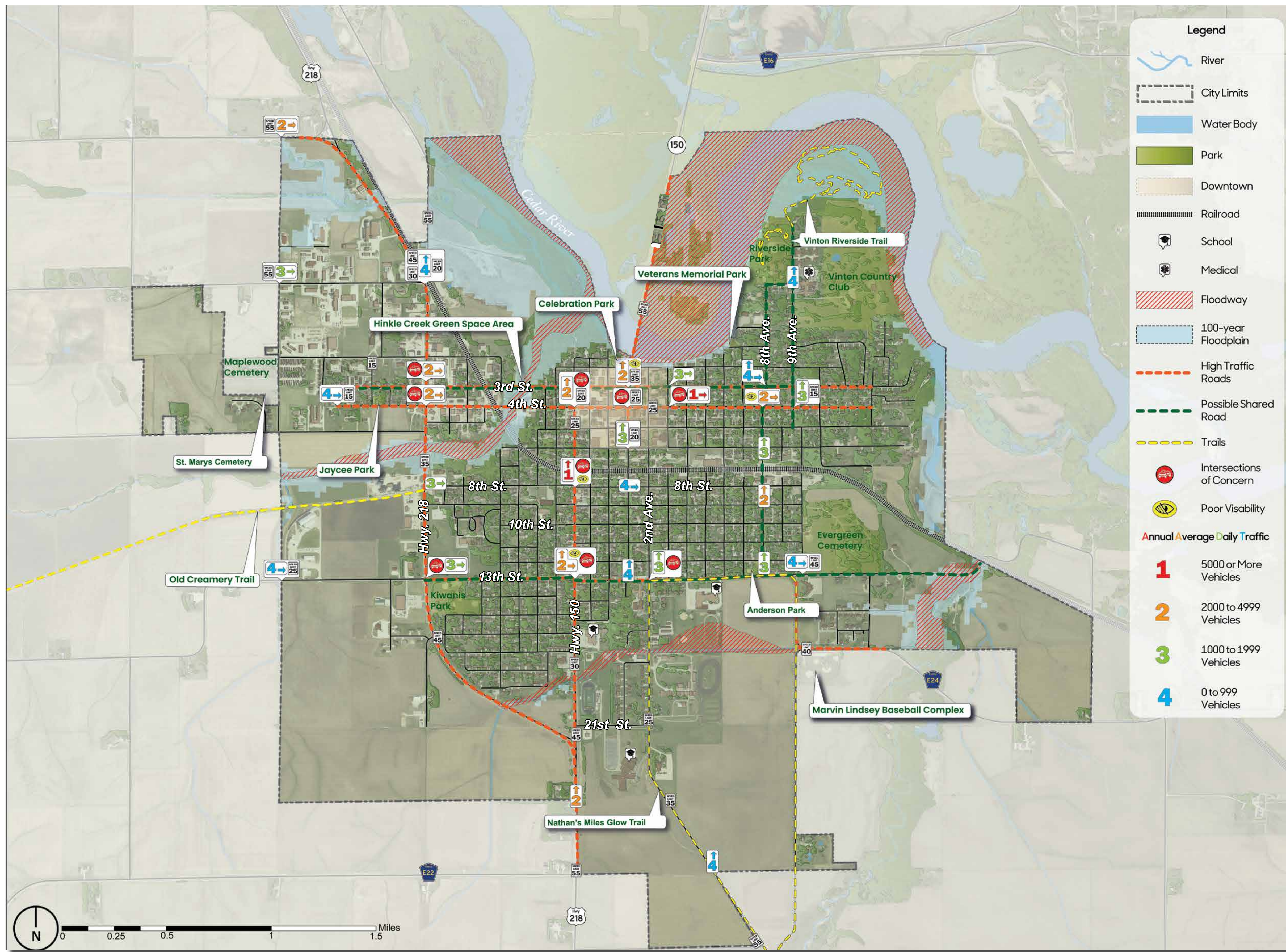
The Vinton visioning design team, along with representatives from the steering committee, met in mid-April 2023 with the Benton County Engineer, the Iowa Department of Transportation District Planner and a representative from Benton County Economic Development to discuss future improvements planned by the various agencies as well as to identify transportation-related issues of which the design team should be aware. City staff were also present at the meeting, including the city administrator, city clerk, public works director, and both the director and assistant director of the parks department.

Hwy. 218 and Hwy. 150 are both state highways and both were mentioned numerous times during the community focus groups as routes that needed enhanced pedestrian access to improve accessibility and connectivity. Nathan's Miles Glow Trail, the Old Creamery Trail, the walkway in Celebration Park, and the 13th Street sidewalk were noted by community members as being community assets.

The map on this board identifies the intersections where there is no traffic control (stop or yield signs). The lack of traffic control can be confusing to drivers - especially those drivers that are inexperienced - as to who has the right-of-way.



The Highway 218 corridor lacks efficient branded way-finding, pedestrian connectivity, safe and designated pedestrian crossings.



The map on this board graphically illustrates the existing posted speed limits, the Iowa Department of Transportation's (IDOT) Average Daily Traffic (ADT) count, and the intersections of concern and/or where visibility is an issue as noted by community members.

The ADT is taken from the IDOT's ADT interactive website. The traffic count data provides valuable information to better understand the vehicular circulation throughout the community. This, in turn, further explains various transportation related issues identified by the community members during the focus group sessions and design workshop and allows for the development of site specific and suitable transportation enhancements that help address the needs identified by the community.

Posted speed limits are important because the vehicle speed impacts the type of design tools that are most appropriate for providing successful traffic calming measures, determining readable text on way-finding signage and enhancing pedestrian and motorist safety.

Traffic control is an important element in traffic calming. Ultimately, successful traffic control cannot rely solely on tangible elements like the enhancements proposed on the following boards, there also needs to be enforcement of the speed limits.



Uncontrolled intersections like this one at 4th St. & 9th Ave. confuse motorists and contribute to higher speeds.



Incomplete sidewalk segments, sidewalks in ill-repair, and lack of ADA accessibility prevent safe pedestrian circulation.