

Transportation Inventory and Analysis

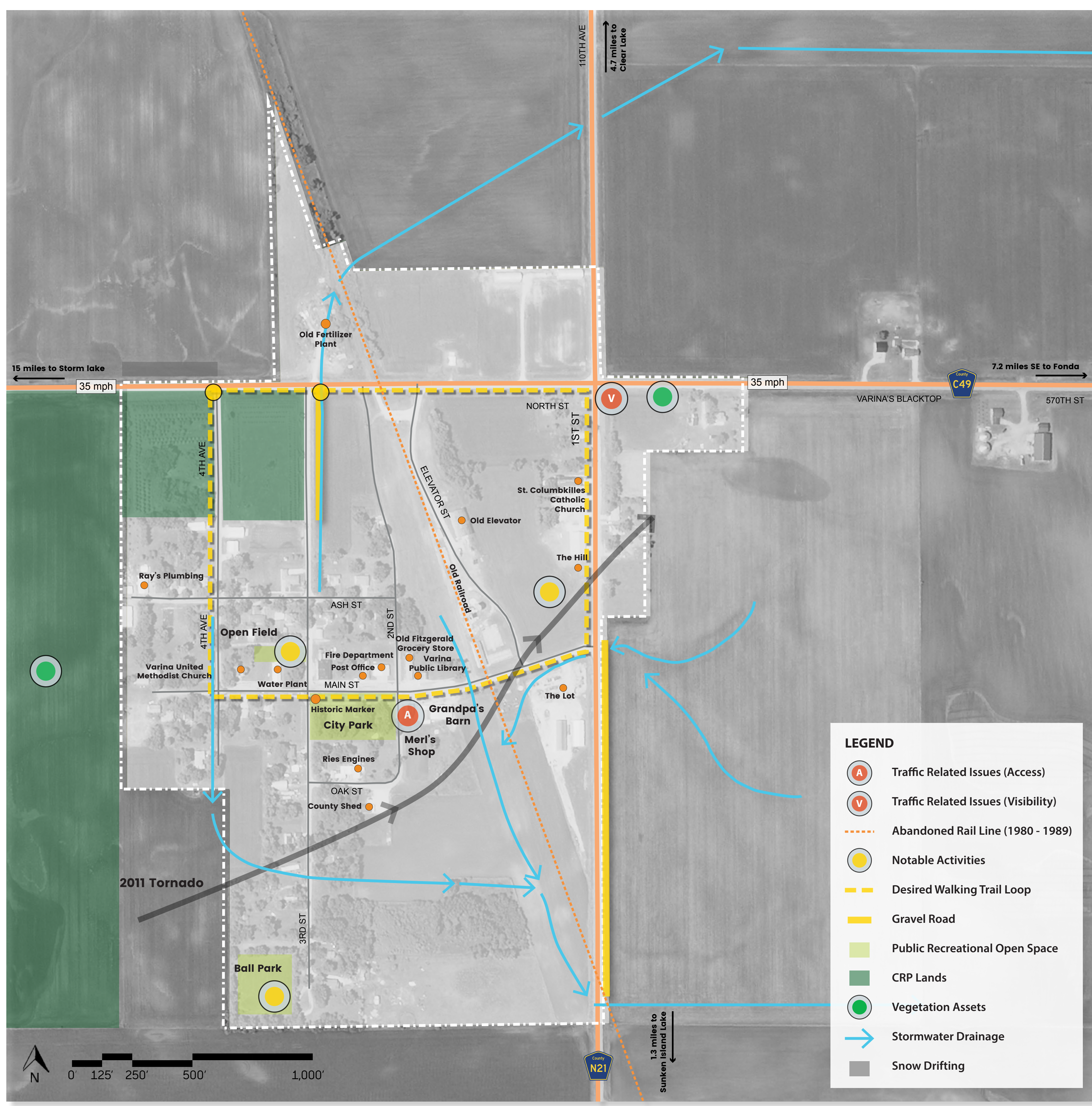
Knowledge of the transportation systems in and around a community is critical for sustainable transportation enhancement planning. Varina's transportation systems include roadways, pedestrian and snowmobile routes.

Varina is at the intersection of two primary roadways, County Road C49 (570th Street) running east to west and County Road N21 (110th Avenue) running north and south. There was an abandoned rail line (1980 - 1989) traversing the community from the northwest to the southeast.

The visioning design team met with Iowa Department of Transportation (DOT) personnel, the Pocahontas County Engineer, and local officials to identify existing, past, and future transportation system improvements, maintenance, and other transportation-related constraints and opportunities in the Varina area.

Several assets and opportunities include the desired walking trail loop with notable activities along it's path like the sledding hill, the library, the future Merl's shop, the city park and the soccer field. The prairie wetland to the west is a vegetation asset to the community. The community also identified a few neighborhood assets which provide visual interest such as Clear Lake (4.7 miles, North), Fonda (7.2 miles Southeast), the Storm Lake (15 miles, West) and the Sunken Island Lake (1.3 miles, South). These assets have the potential to become neighborhood community connections and areas of passive recreation.

The items of concern related to the transportation systems include a variety of vehicular and pedestrian interactions such as street access, poor visibility, and ADA accessibility. Parts of the desired walking trail loop are made up of gravel roads and have sidewalk safety issues.



Map of Varina highlighting and analyzing existing transportation infrastructure.

Steering Committee



"Vehicles are supposed to be slowing down to 35 mph on C 49, but they don't slow down."

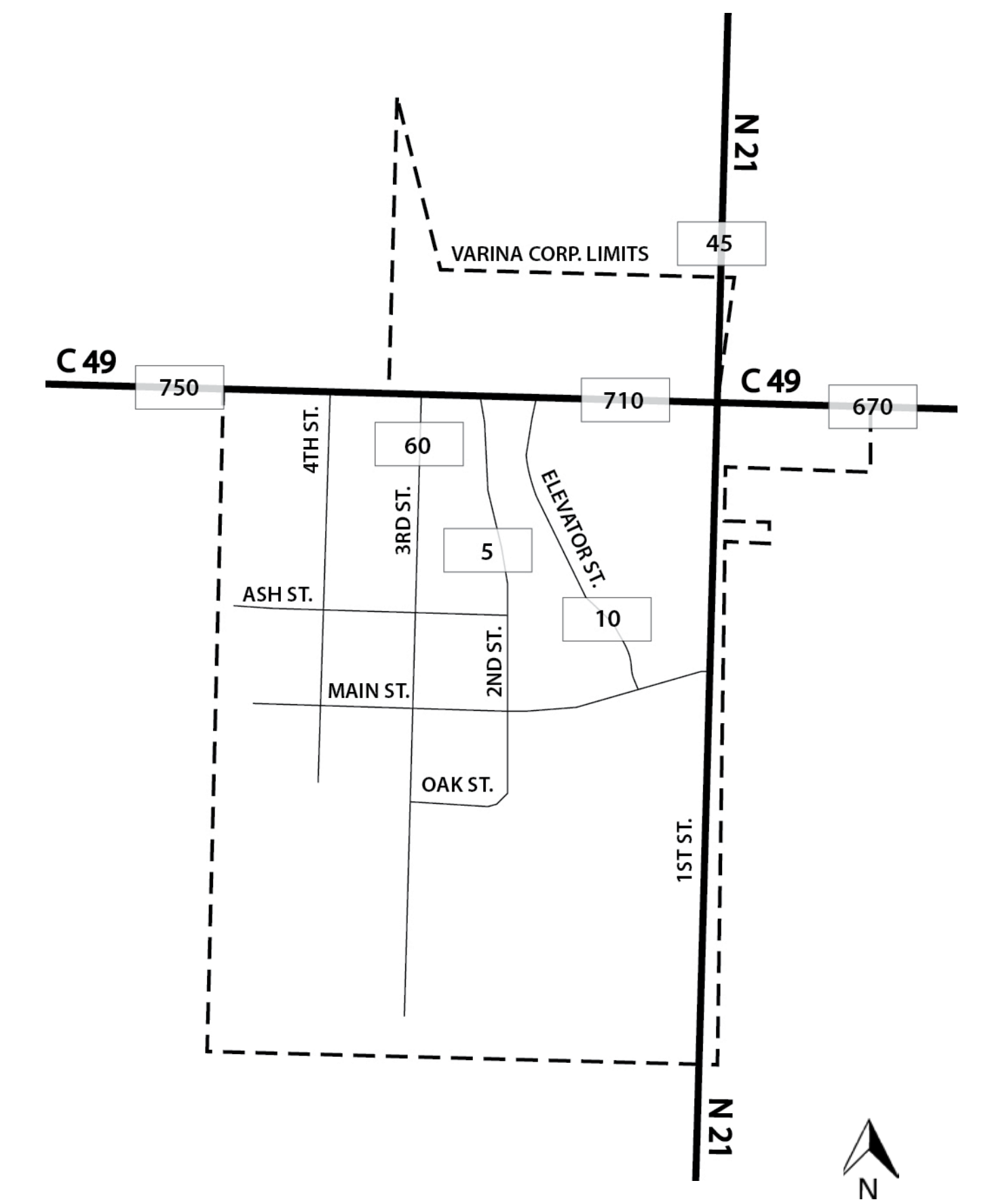
"We would probably ride bikes in town more.. if we could safely. Some days it's really not safe to be out on C 49."

"At night I don't like to walk on the north end of 4th street because of the different critters."

Parents



"One thing I would like to see is a sidewalk or some way of looping to stay off the highway, because we don't get vehicles to slow down much because you're a small town and they choose not to slow down."



Annual Average Daily Traffic - 2015



Transportation Inventory & Analysis

Jeffrey L. Bruce and Company LLC
 Landscape Architects: Eric Doll, PLA, ASLA and David Stokes, PLA, ASLA
 Interns: Riley Dunn and Carol Joella Ustine
 Iowa State University | Trees Forever | Iowa Department of Transportation

