

COMMUNITY FEEDBACK

Steering Committee
The Tama Steering Committee has asked to prioritize safer connections for pedestrians crossing US Highway 63.

Hispanic Residents
Hispanic residents of Tama were interviewed and cited the unsafe pedestrian connections along Highway 63, which makes accessing schools and essentials such as groceries difficult.

Active Adults
Active Tama adults also asked for a pedestrian overpass to make access to Oak Park from the South Tama Rec Trail easier and safer.

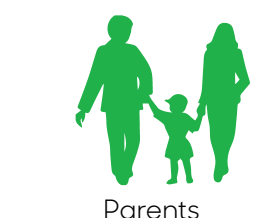
COMMUNITY ENGAGEMENT RESPONSE

"Heavy Traffic"



The 17th Street and Highway 63 intersection were identified by community members as a danger to cross on the Tama and Toledo Matrix due to vehicular speeding and lack of crosswalks, but also because the US Highway 63 trucking route travels through this crossing. The two concepts address this issue differently, and Concept One prioritizes pedestrian safety over truck traffic while Concept Two satisfies both conditions but will require more money for implementation.

"Safer Routes to Schools"



According to the priorities of Tama and Toledo, Better Pedestrian Connections and Safer Routes to Schools were both in the top three of both communities surveyed Transportation Enhancement Issues. Both concepts create safer connections for pedestrians by either slowing down traffic or providing an accessible pedestrian overpass over Highway 63, allowing traffic to move unimpeded.

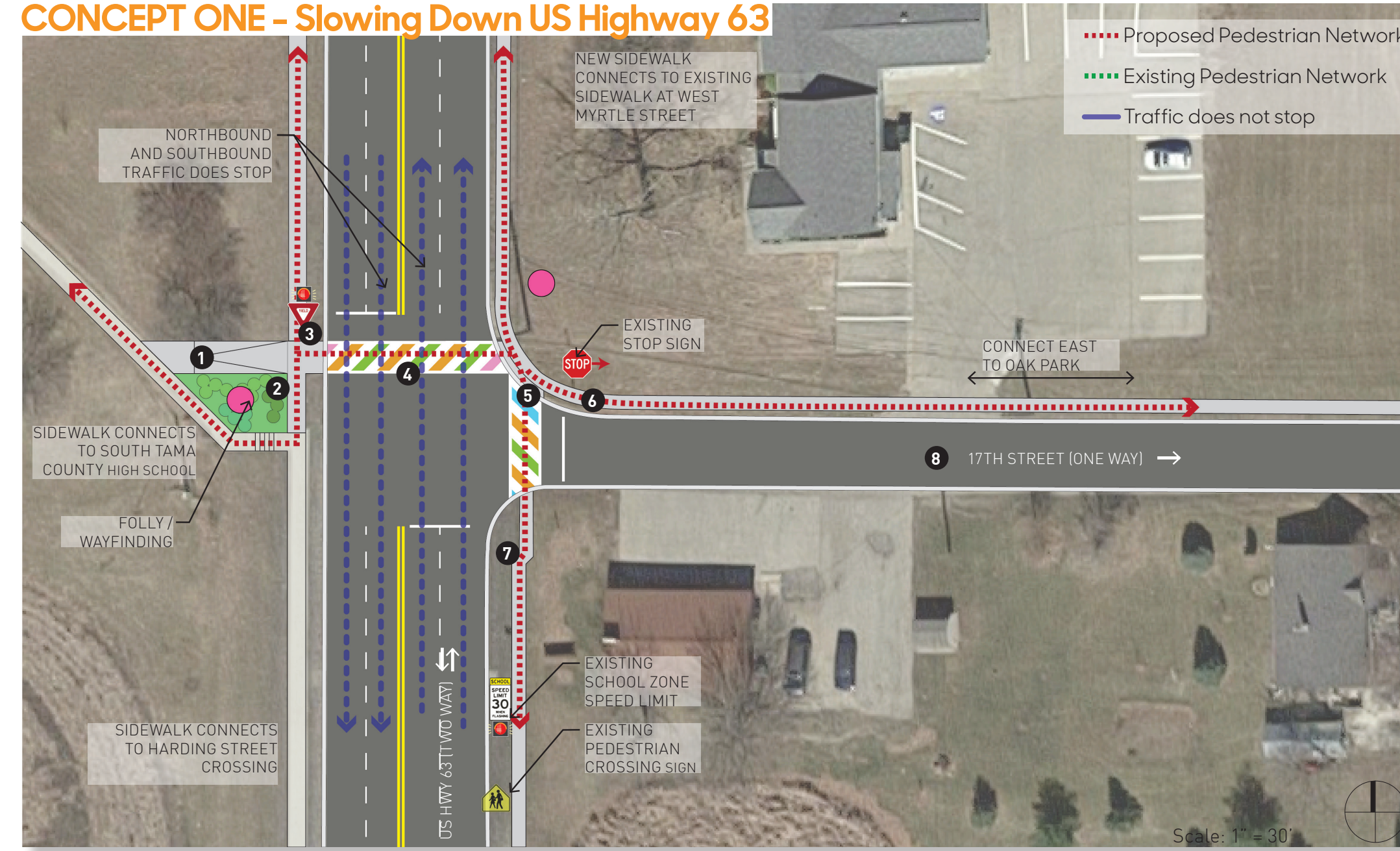
"More Accessibility for Seniors"



The Tama Priorities also identified lack of access for seniors and the mobility challenged as a Transportation Enhancement Issue, and both concepts for 17th Street and US Highway 63 address this issue by providing ADA curb ramps with detectable warning strips at the end of all proposed crosswalks. Concept One includes an accessible ramp next to the existing concrete stairs, allowing all students to use the sidewalk to Tama County schools. The pedestrian overpass in Concept Two is also ADA accessible, allowing for mobility challenged students and pedestrians to safely cross US Highway 63.

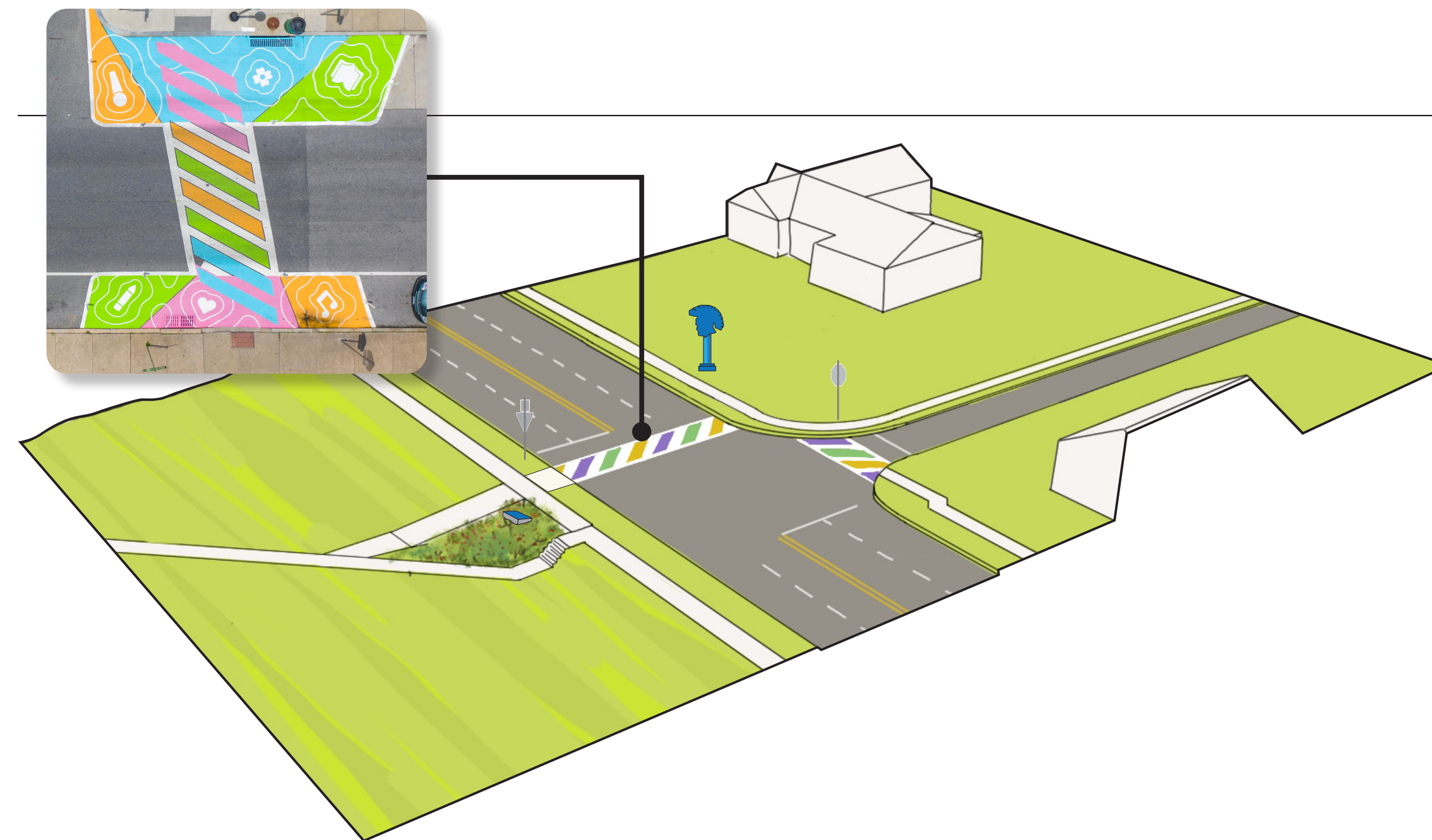
Tama + Toledo
17th St + US 63

CONCEPT ONE - Slowing Down US Highway 63

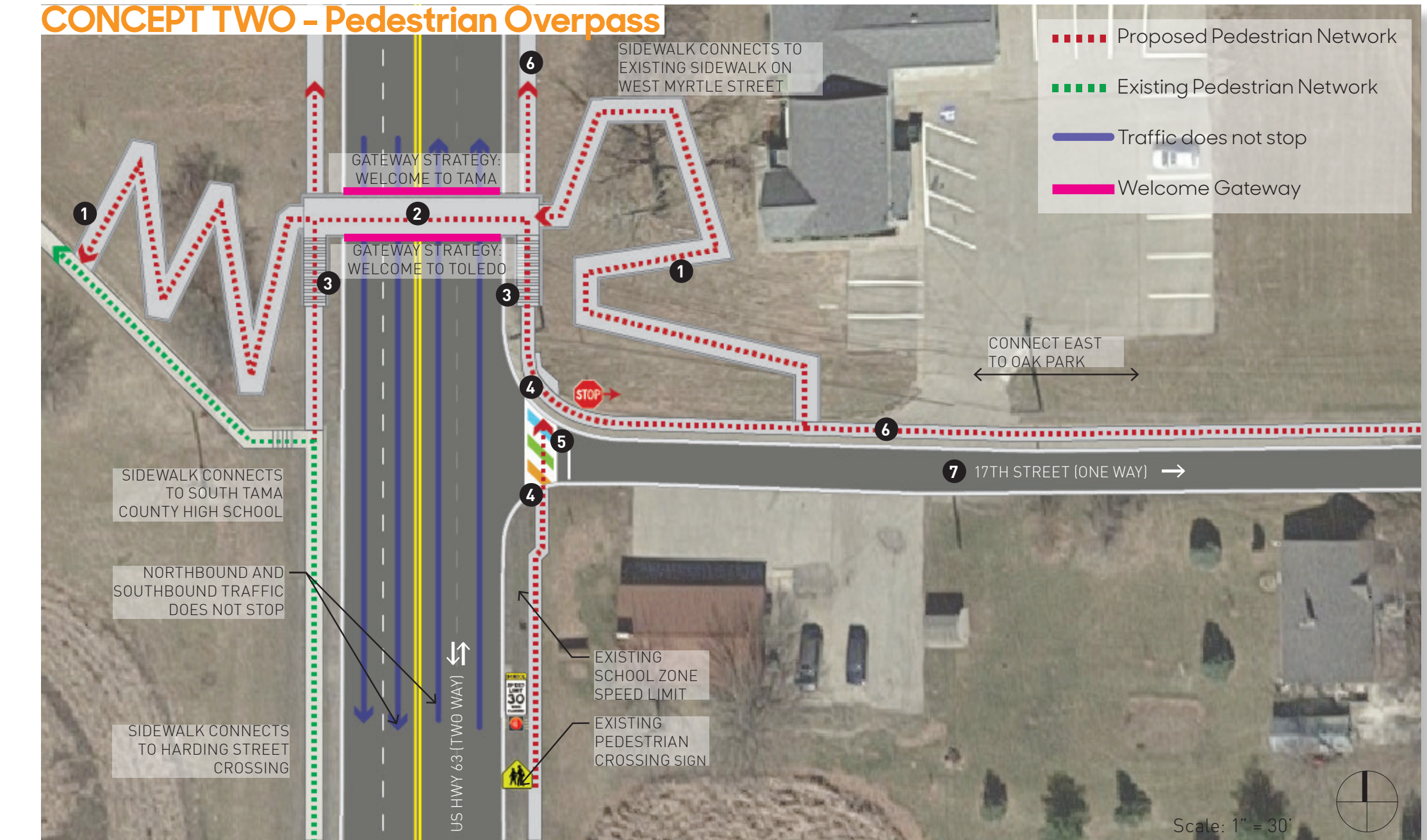


LEGEND:

- 1 ADA Ramp - Ramp for access to existing sidewalk to South Tama County High School
- 2 Planting Space
- 3 Blinking Yield Sign - Push button stop sign could be implemented instead of yield sign
- 4 Crosswalk
- 5 ADA Curb Ramp - Curb ramp with ADA detectable warnings.
- 6 New Sidewalk - 6' min. sidewalk connects north to Toledo and the Business District.
- 7 Push-Button Stop Sign - Stop sign that lights up when button underneath is pressed, signaling traffic to stop.
- 8 Roadway Configuration - Provide sidewalk on North side of 17th Street to Oak Park, convert street to one-way.

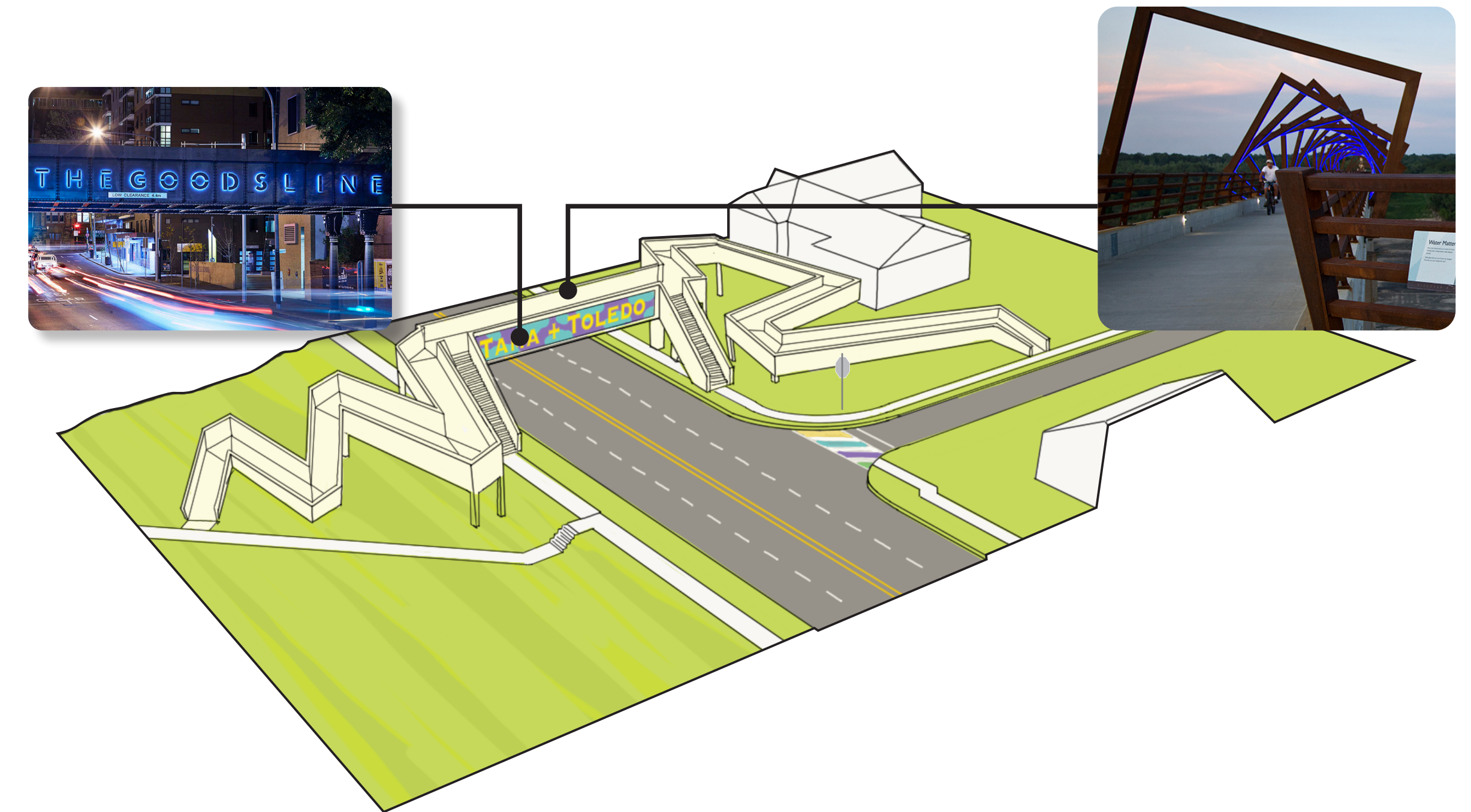


CONCEPT TWO - Pedestrian Overpass



LEGEND:

- 1 ADA Accessible Ramp for pedestrian overpass
- 2 Pedestrian Overpass - overhead bridge connection with gateway signage opportunity for both communities
- 3 Stairs for pedestrian overpass
- 4 ADA Curb Ramp - Curb ramp with ADA detectable warnings.
- 5 Crosswalk
- 6 New Sidewalk - 6' wide (minimum) concrete sidewalk connection.
- 7 Convert 17th Street into a one-way street and provide sidewalk on the north side of the street that connects to Oak Park.



site design group

LA: Cassandra Rice, PLA, ASLA, Hana Ishikawa, AIA
Landscape Designer: Richard Meagher
Intern: Paul Hsu

Iowa State University | Trees Forever | Iowa Department of Transportation

