

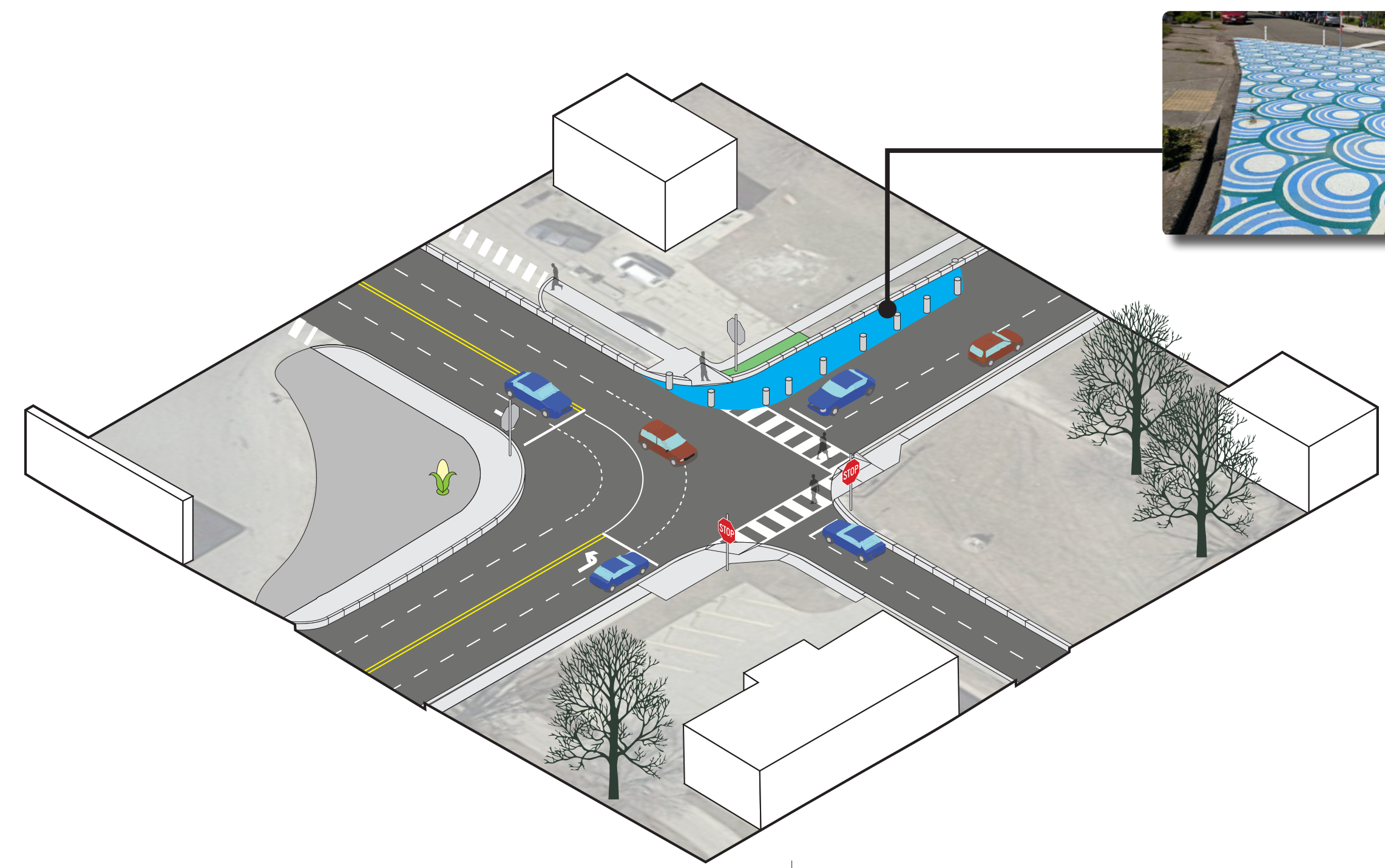
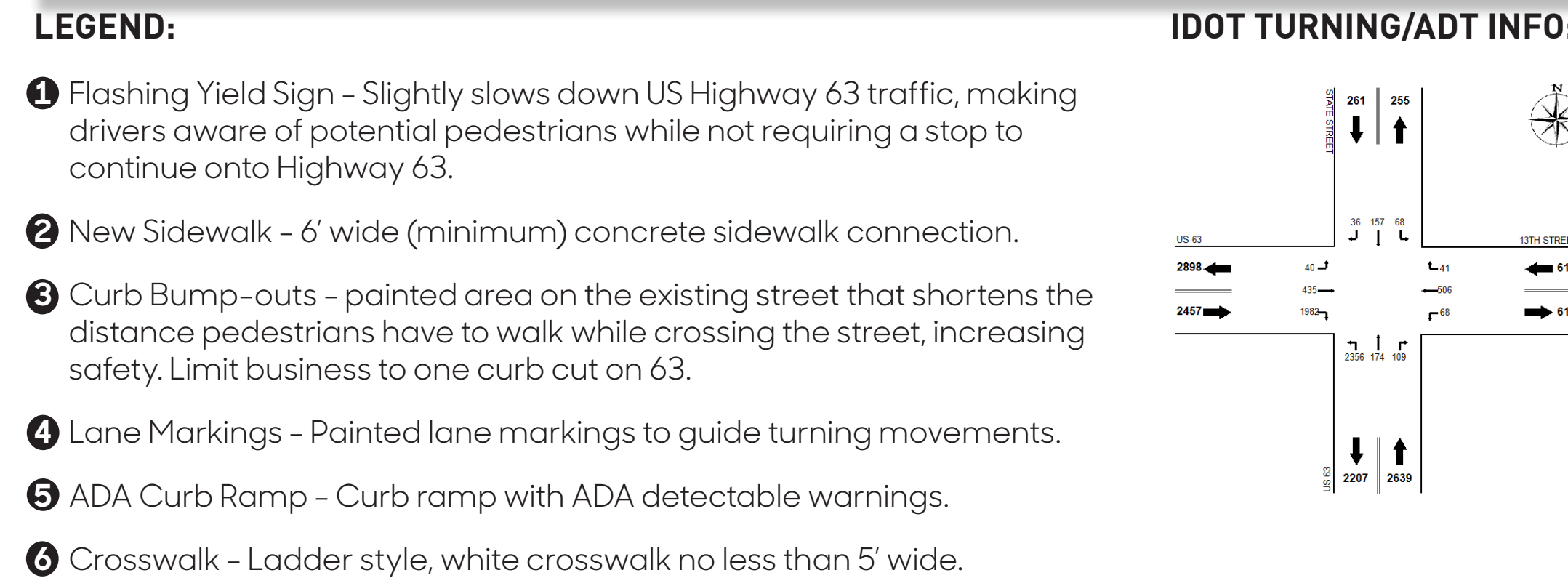
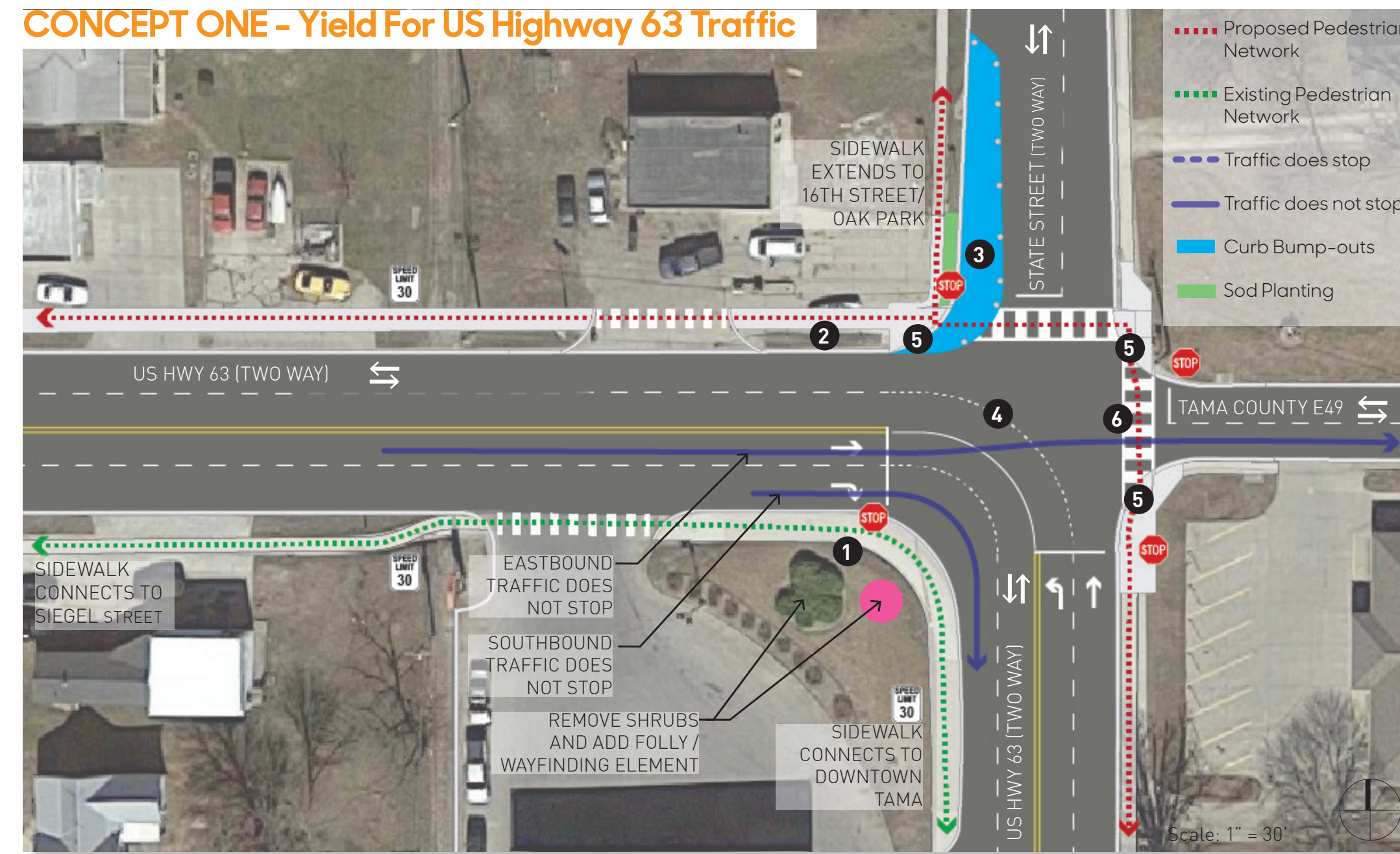
COMMUNITY FEEDBACK

- Steering Committee** - The Tama Steering Committee has asked to prioritize safer connections for both bikers and pedestrians crossing US Highway 63.
- Mobility Challenged** - Mobility challenged individuals said that the lack of complete sidewalks along Church, Ann and State Street make it difficult to safely navigate this intersection.
- Parents** - Tama parents mentioned that a sidewalk along State Street would make it easier for children to safely reach the Tama Toledo Family Aquatic Center.

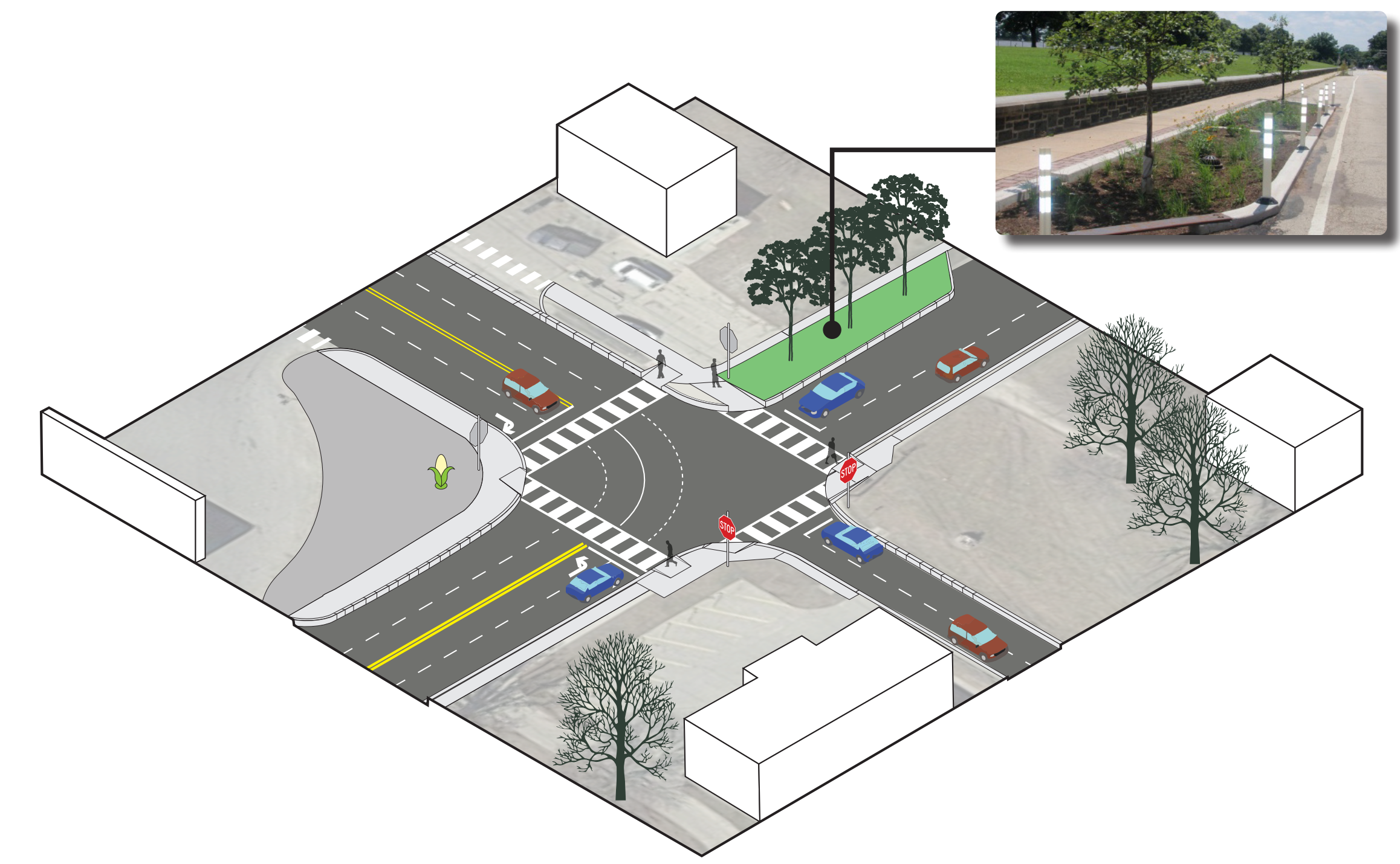
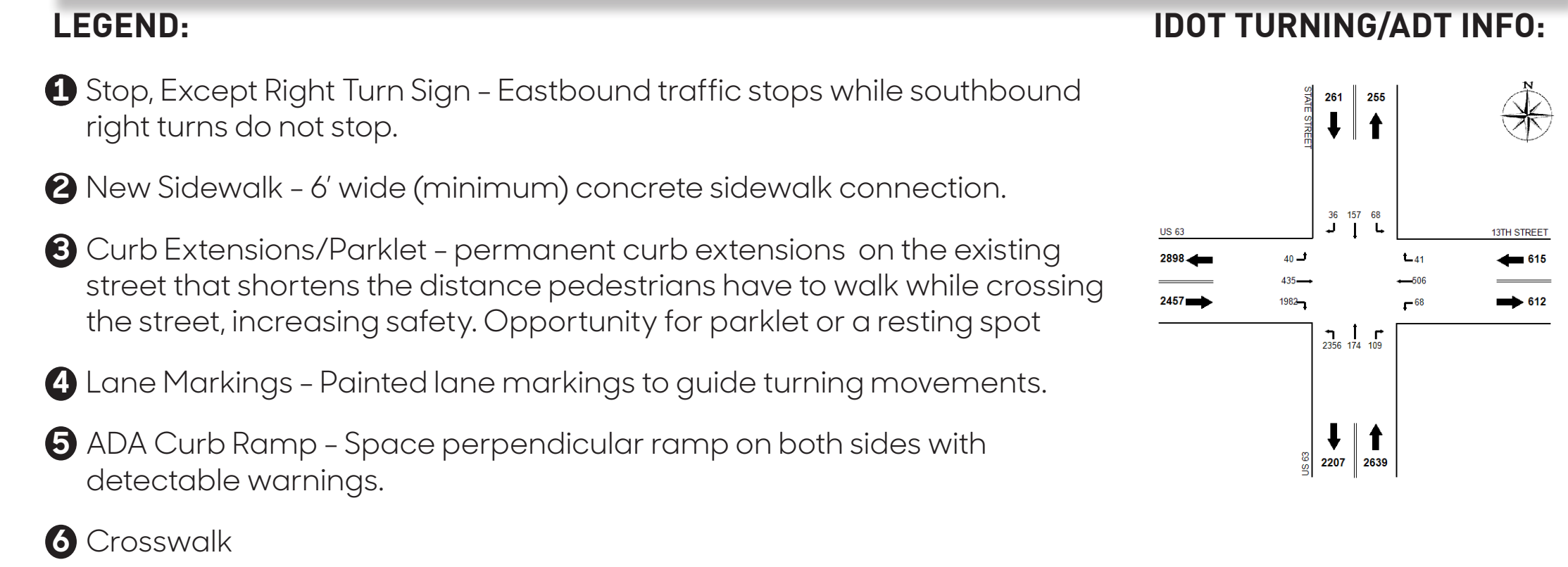
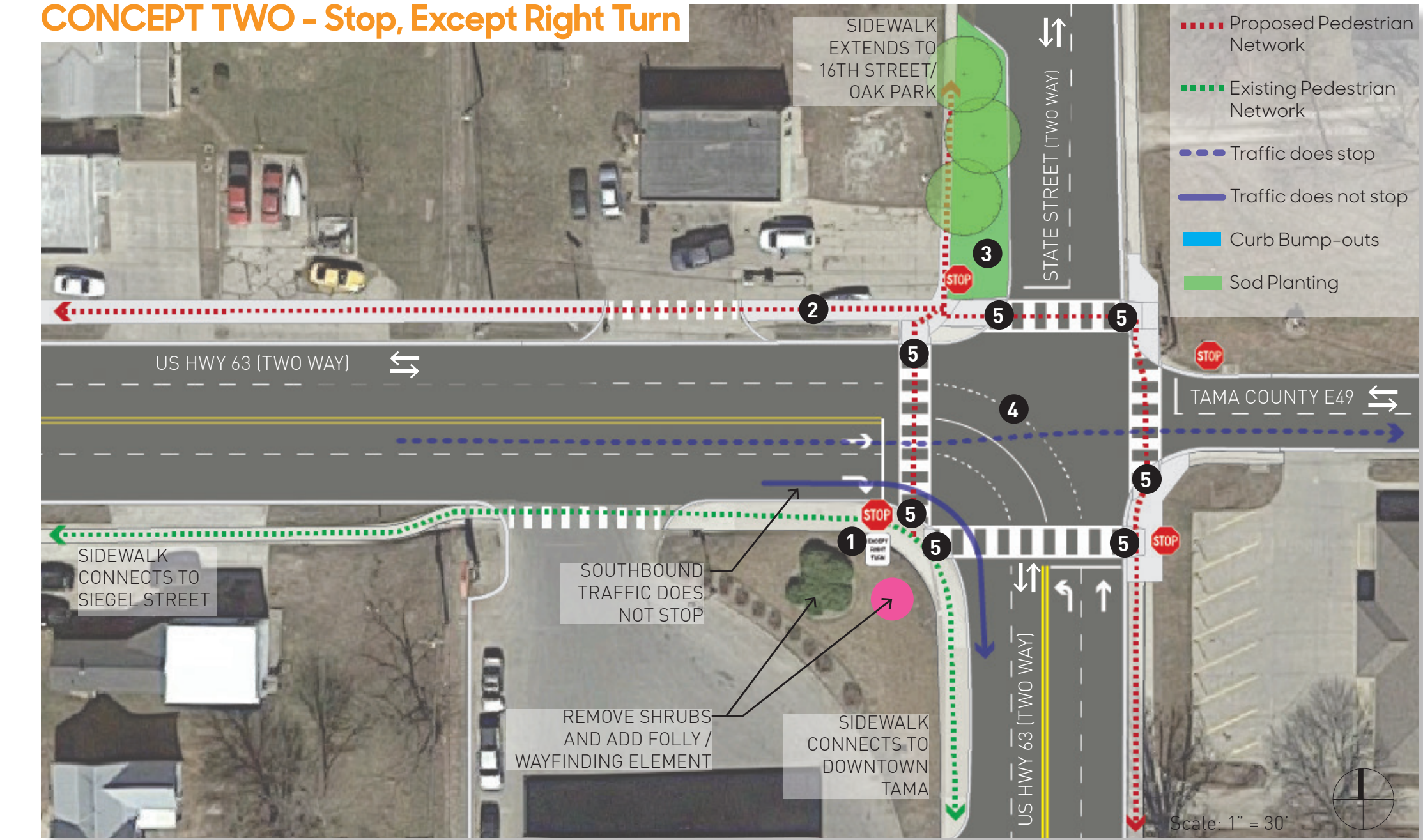
COMMUNITY ENGAGEMENT RESPONSE

- "Heavy Traffic"** - The State Street and Highway 63 intersection were identified by community members as a danger to cross on the Tama Matrix due to vehicular speeding and lack of crosswalks, but also because the US Highway 63 trucking route travels through this crossing. The goal of both concepts is to slow down truck traffic without stopping it, addressing the concerns of Tama officials that IDOT would re-route this traffic through another town.
- "Better Pedestrian Connections"** - According to the Tama Priorities, residents felt that better pedestrian connections was the third most important Transportation Enhancement Issue. Both concepts provide safe crossing across both streets by providing crosswalks, slowing traffic, and shortening the distance for pedestrians to cross. The proposed sidewalks along US Highway 63 and State Street will help to provide a more complete pedestrian network, satisfying the priorities identified by Tama community members including Better Pedestrian Connections and Better Neighborhood Streetscapes.
- "More Accessibility for Seniors"** - The Tama Priorities also identified lack of access for seniors and the mobility challenged as a Transportation Enhancement Issue, and both concepts for State Street and US Highway 63 address this issue by providing ADA curb ramps with detectable warning strips at the end of all proposed crosswalks. Yield and stop signs are also proposed to slow incoming traffic and make drivers more aware of potential pedestrian presence, creating a safer crossing environment.

CONCEPT ONE - Yield For US Highway 63 Traffic



CONCEPT TWO - Stop, Except Right Turn



Tama
State St + US 63

site design group
LA: Cassandra Rice, PLA, ASLA, Hana Ishikawa, AIA
Landscape Designer: Richard Meagher
Intern: Paul Hsu
Iowa State University | Trees Forever | Iowa Department of Transportation

