

Implementation Overview

The Community Visioning Plan created by the design team for both Tama and Toledo are the first step towards implementing the transportation network changes that can improve the safety and livability of both communities. Using these documents as a foundational first step in the design process, projects can progress towards the point of construction with the continued help of allied professionals.

The design team, site design group, would like to continue our effort to improve the cities of Tama and Toledo by serving as landscape architectural consultants in the future for both communities. Our familiarity with the Community Visioning Plan and the members of both Steering Committees, as well as our experience with implementing these types of projects while able to help secure future funding, makes site design group a strong candidate for further inclusion in the improvement of both Tama and Toledo.

Projects may require help beyond the capability of the Tama Visioning Steering Committee or available city staff. For this improvement project, the steering committee should expect to engage the services of a Landscape Architect and a Civil Engineer.

The graphics on this board to the right illustrate the process for taking individual design projects from a general vision to a fully realized implementation. The specific amount of time, costs, and efforts are different from site to site, and will require a more in-depth cost estimate and analysis by whoever is selected to continue the various stages of each project. Projects may need to be adjusted based on a variety of factors such as project scope, complexity, project schedule and funding sources.

The ideas presented through the Community Visioning Program are the beginning of this design process.

Action Plan

The Action Plan is a basic, recommended approach for project implementation on how to take the ideas from the Community Visioning Plan to completed construction projects.

YEAR 1

- TASK 1

Schedule monthly steering committee meetings, confirm understanding of scope and estimated costs of identified projects, and **prioritize the top three projects for design refinement and implementation.**
- TASK 2

Determine the most practical project for implementation and identify all applicable and eligible funding sources and other resource opportunities.
- TASK 3

Utilizing Community Visioning deliverables along with assistance from Trees Forever and a landscape architect, **submit application(s) for eligible and related grant programs.**
- TASK 4

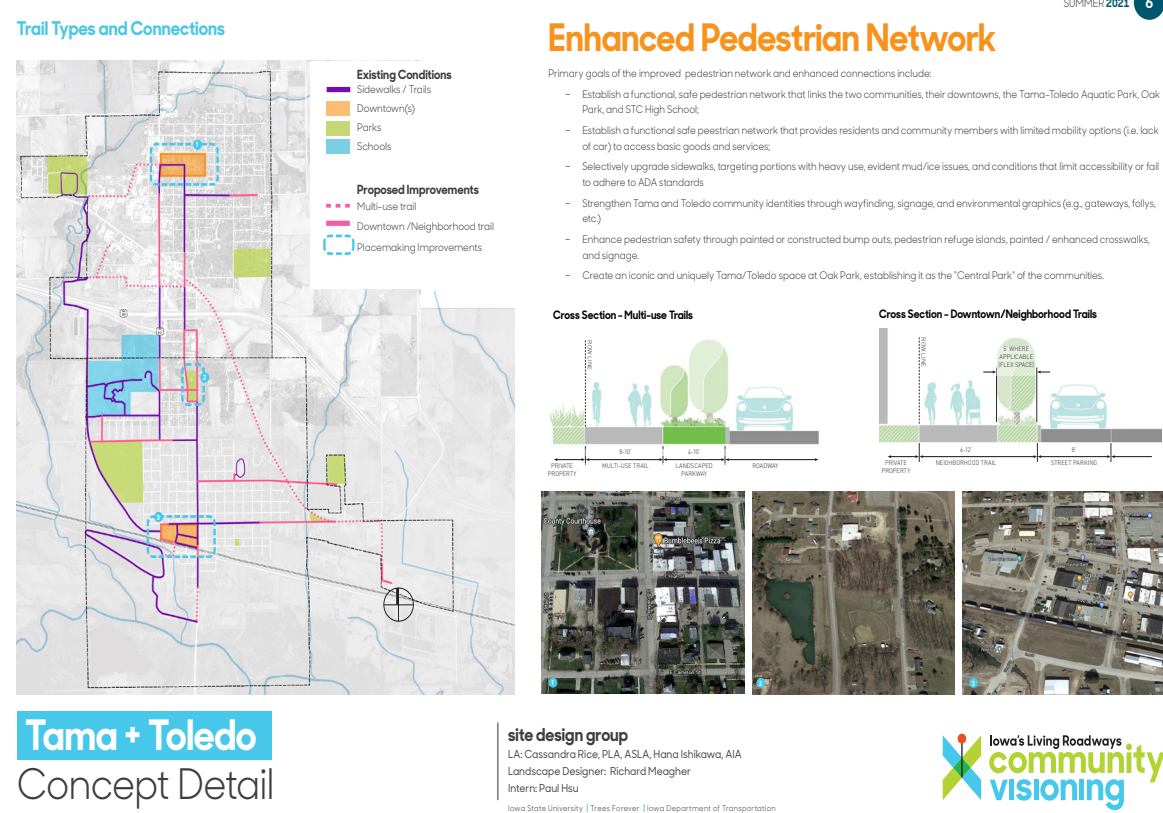
Upon a successful grant application and securing funding, **develop a schedule for project design, bidding, and construction. Select and execute a contract with a landscape architect as the lead design consultant.** This begins the Design development phase.

YEAR 2-10+

- TASK 1

Each year re-assess the top three priority projects based on grant application success and other funding/resource opportunities, **then repeat Tasks 2-4 for the next selected project.**

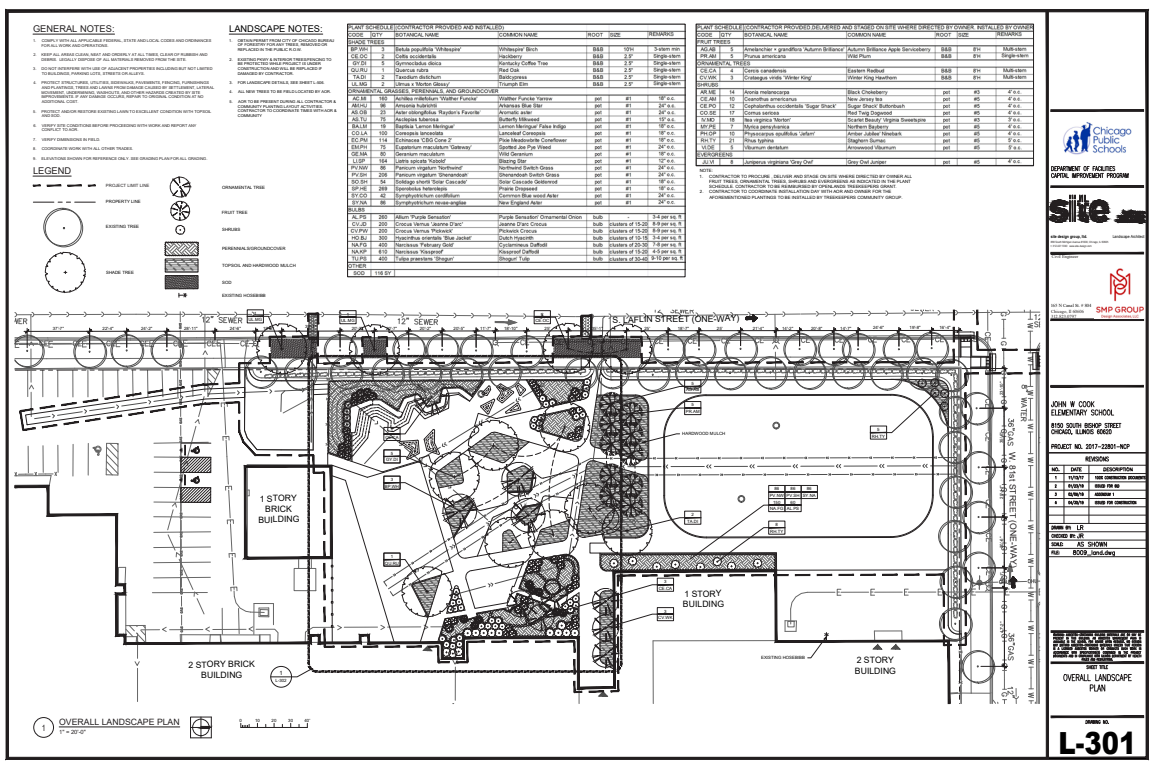
Stage 1: Master Planning (Vision)



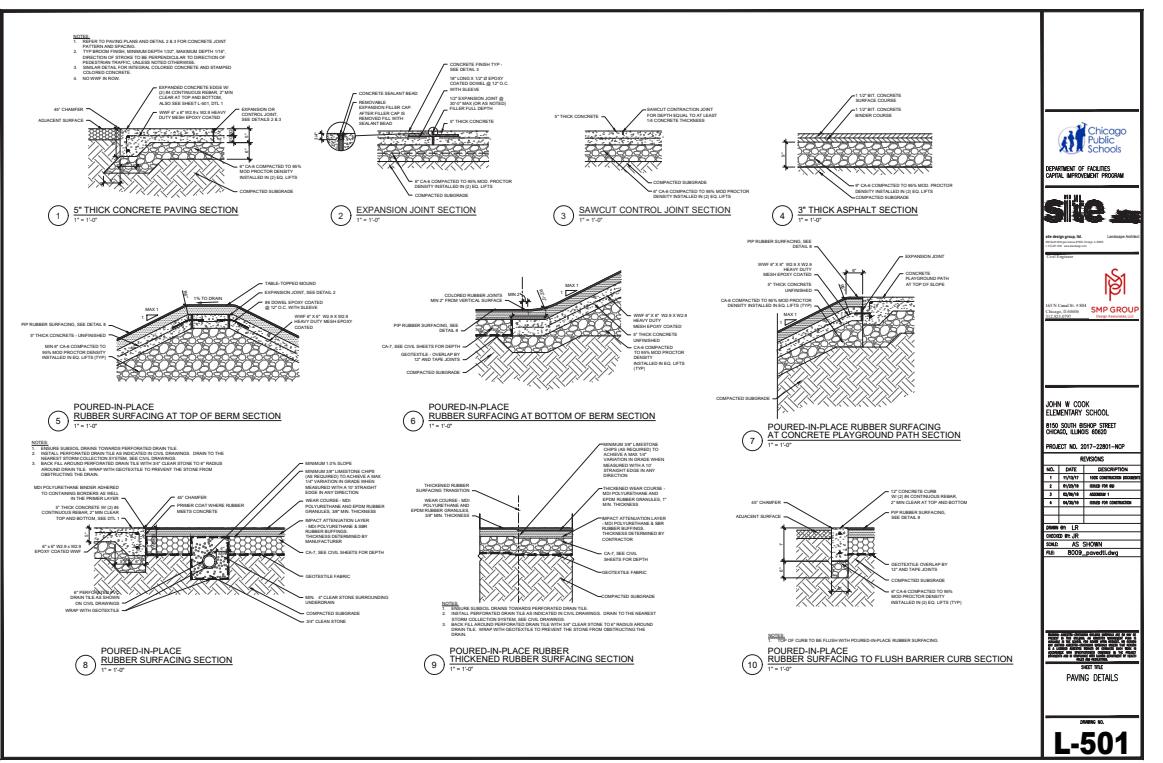
Stage 2: Schematic Design



Stage 3: Design Development



Stage 4: Construction Documents



Stage 5: Construction Administration



Stage 6: Completed Project

