



W Sixth Street: No Sidewalks



W First Street



Carpenter Street to South

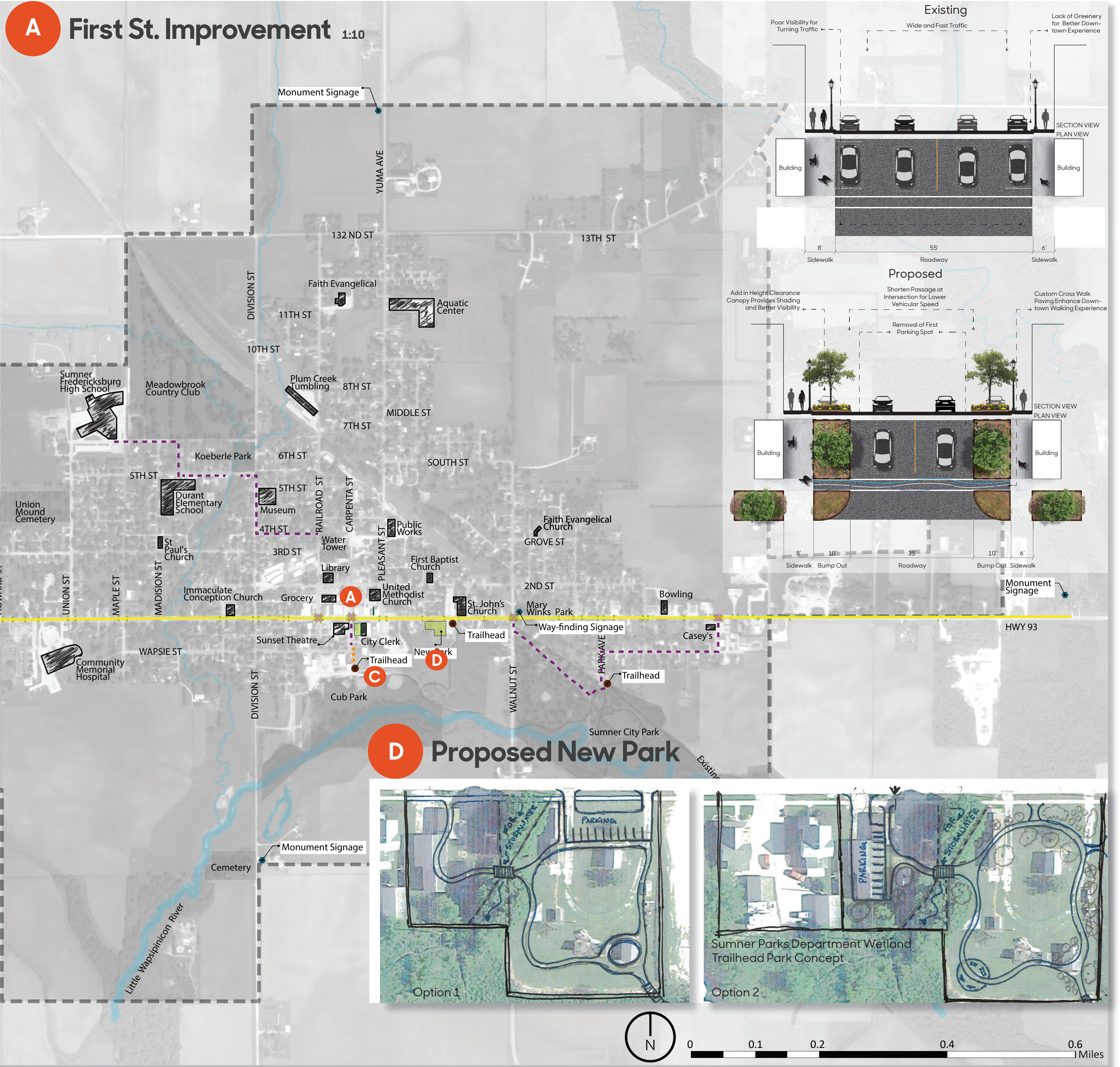


Monumental Signage on West End

“We don’t usually ride on Main Street, we just cross over it real quick and ride the back street...”

The focus of this concept is to improve the safety of 1st Street/Hwy 93. In 2020, Iowa IDOT will be making street improvements from Howard St. to the Fayette County line. This concept focuses on coordinating with those planned improvements. This phase adds bump-outs on the major intersections off 1st Street to improve vehicular and pedestrian safety, and to add amenities such as shade trees, plants, and benches for a more immersive downtown experience.

Improvements will be made to the existing monumental signs at the west and east city limits. Monumental signage will also be added at the north and south entrances off N. Pleasant Street and S. Walnut Street. A new trailhead sign by City Hall will better connect from the downtown core to City and Cub Parks. Other way-finding signage will be added and improved at other trailheads for better destination guidance. Sidewalks will be added from W. Sixth Street to W. Fourth Street to ensure student safety between the high school and elementary. Pedestrian safety and accessibility will also be addressed by sidewalk improvements between A Ave to Park Ave.



Sumner Concept 1

Immediate Goals:
Hwy 93 DOT Improvements, School/Safe Routes, Trailheads, and Pocket Park

Steve Ford Landscape Architecture
Martin Gardner Architecture
Landscape Architect: Steve Ford; Designer: Michael LeClere
Intern: Peiming Chen
Iowa State University | Trees Forever | Iowa Department of Transportation

