

Concept Overview

After meeting with the steering committee and residents of the community, the design team proposed several concepts for Stanton based on the goals identified. Below is an outline of the proposed concepts, which correspond to the map:



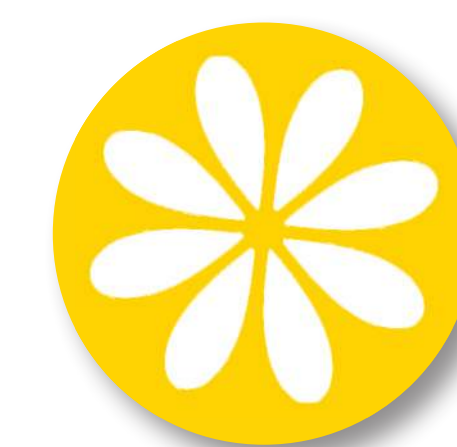
Accessibility, Connectivity, & Safety

Stanton has a significant need for safer pedestrian circulation systems that connect people with all mobility levels to desired destinations such as Danny Anderson Field, Anderson Park, and downtown. The design improvements provide safe movement and crossings within the downtown business district and at the park spaces throughout town.



Trail Assets

Stanton's looped trail system needs defined trailhead spaces that easily and comfortably connect users to the trail. Additional design improvements such as tree plantings, enhanced paths leading to the trail, gathering and park spaces, bicycle parking and repair stations, and vehicular parking all provide the needed amenities to draw people in as they are travelling along Highway 34.



Beautification

Improving aesthetics along Broad Avenue creates a sense of place, calms traffic, and enhances the visual experience for visitors and residents along the primary downtown corridor in the community. The beautification efforts help strengthen existing businesses, while attracting new businesses downtown.



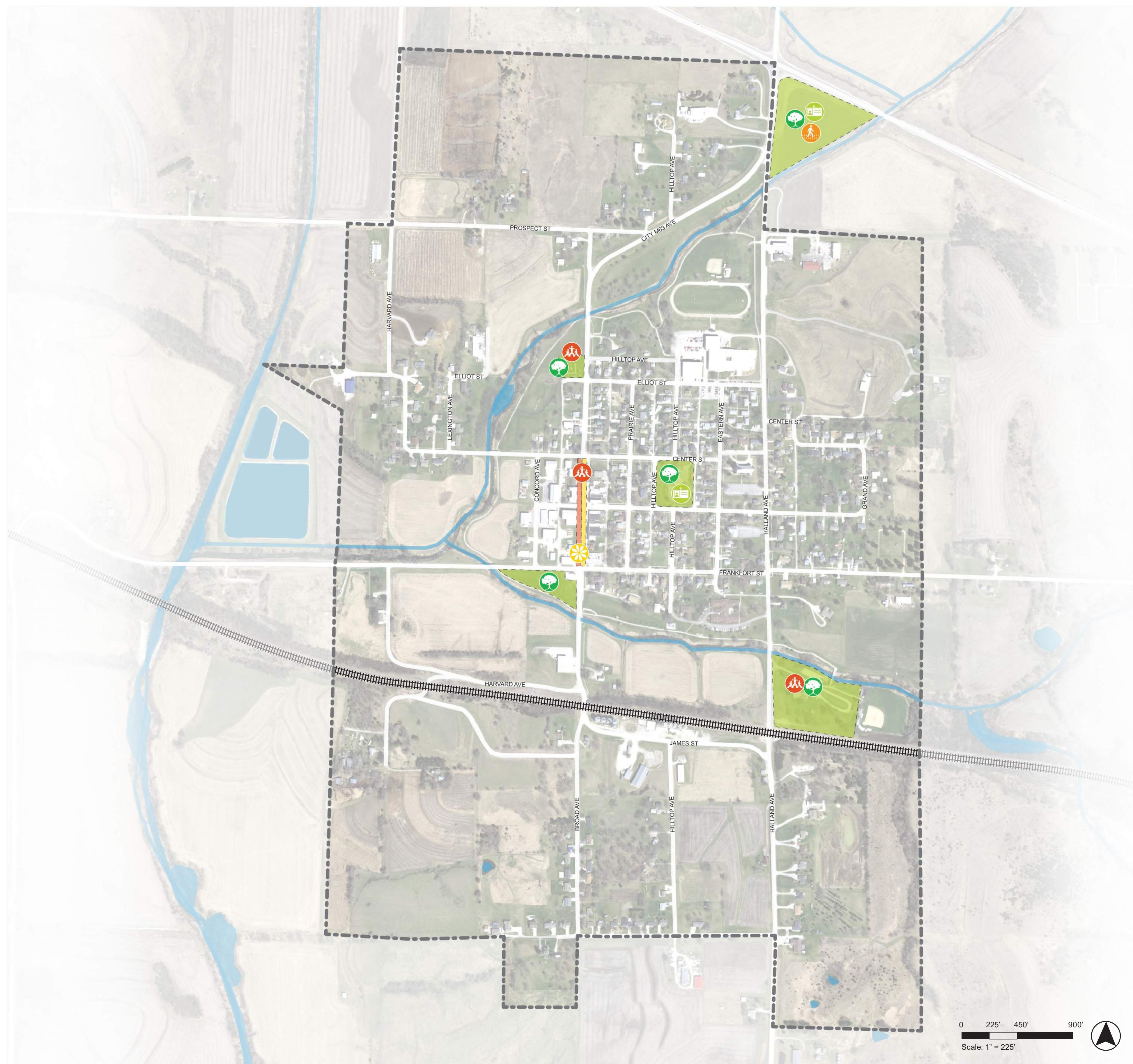
Identity & Branding

An attractive and culturally significant theme incorporates Swedish heritage symbology in a highly visible area to help attract visitors that are passing through the area. This concept also provides an opportunity to continue the theme downtown by interpreting the community's history and enhancing Stanton's cultural identity.



Outdoor Activity Spaces and Entertainment

Concepts for increased outdoor gathering spaces and amenities enhance the city's open spaces, create a variety of community social venues, and promote community health and well-being by offering several enhanced new outdoor environments..



Stanton

Concept Overview

Jeffrey L. Bruce & Company LLC

LAs: David Stokes PLA, ASLA, Lara Guldenpfennig PLA, ASLA
Interns: Abby Scott, Andrea Fager

Iowa State University | Trees Forever | Iowa Department of Transportation

