

Map showing Designated School Routes

Map Source: Iowa Department of Natural Resources, "Natural Resources Geographic Information Systems Library," <http://www.igsb.uiowa.edu/nrgislib/>.



The City of Baltimore uses brightly colored painted footprints on the routes they want kids walking to school. The designated safe routes can be easily monitored and additional safety practices can be utilized, such as crosswalks and signage.

Pedestrian Connections

St. Ansgar Community Schools are all conveniently consolidated on the same campus, which also includes the aquatic center, sports fields, community and children's garden, and the S.T.A.R.T. Trail. The area is heavily used by the community year-round but does not always have safe and accessible ways for pedestrians and bicyclists to reach this destination. In addition to the campus is a multi-track railroad with a deteriorated vehicle crossing, no pedestrian crossing and no warning lights. Many community members labeled areas surrounding the campus as unsafe and not pedestrian friendly.

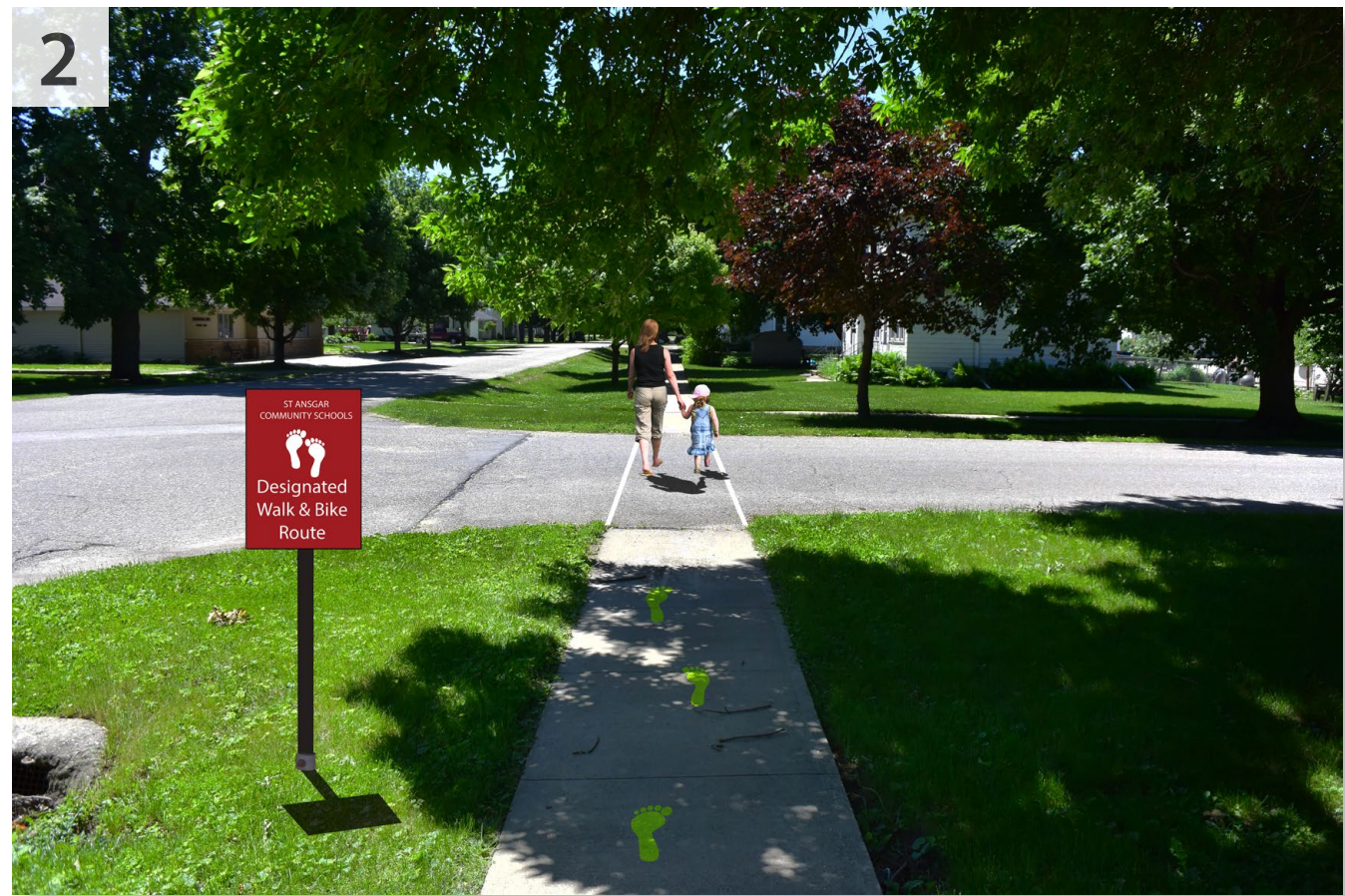
Utilizing existing sidewalks paired with the preferred routes of the community, the design team created a designated school route loop using the following streets; 4th Street, Pleasant Street, 8th Street, Franklin Street, School Street, 6th Street and Jefferson Street. The designated route would include sidewalk upgrades where needed, crosswalk implementation, and signage. Several adjacent streets have existing sidewalks and are included in the designated school route system.

The design team proposes a designated path to walk or bike a safe distance away from the busy grain elevators on Church Street and continuing on to Pleasant and 7th Streets. This would also benefit the residents of The Seasons subdivision by providing a route to school that provides an alternative to walking and biking on the streets.

Other communities have applied pavement markings designating a "safe route to school" using footprints, school logos, and other graphics painted on the sidewalk. Other whimsical ideas that have been used include graphics depicting different methods of movement such as dancing, running, and skipping to encourage physical activities as children walk to and from school. This concept is something St. Ansgar could adopt to let kids and parents alike know this route is specifically designated as a school route and will have signage, crosswalks and other necessary precautions for pedestrians.



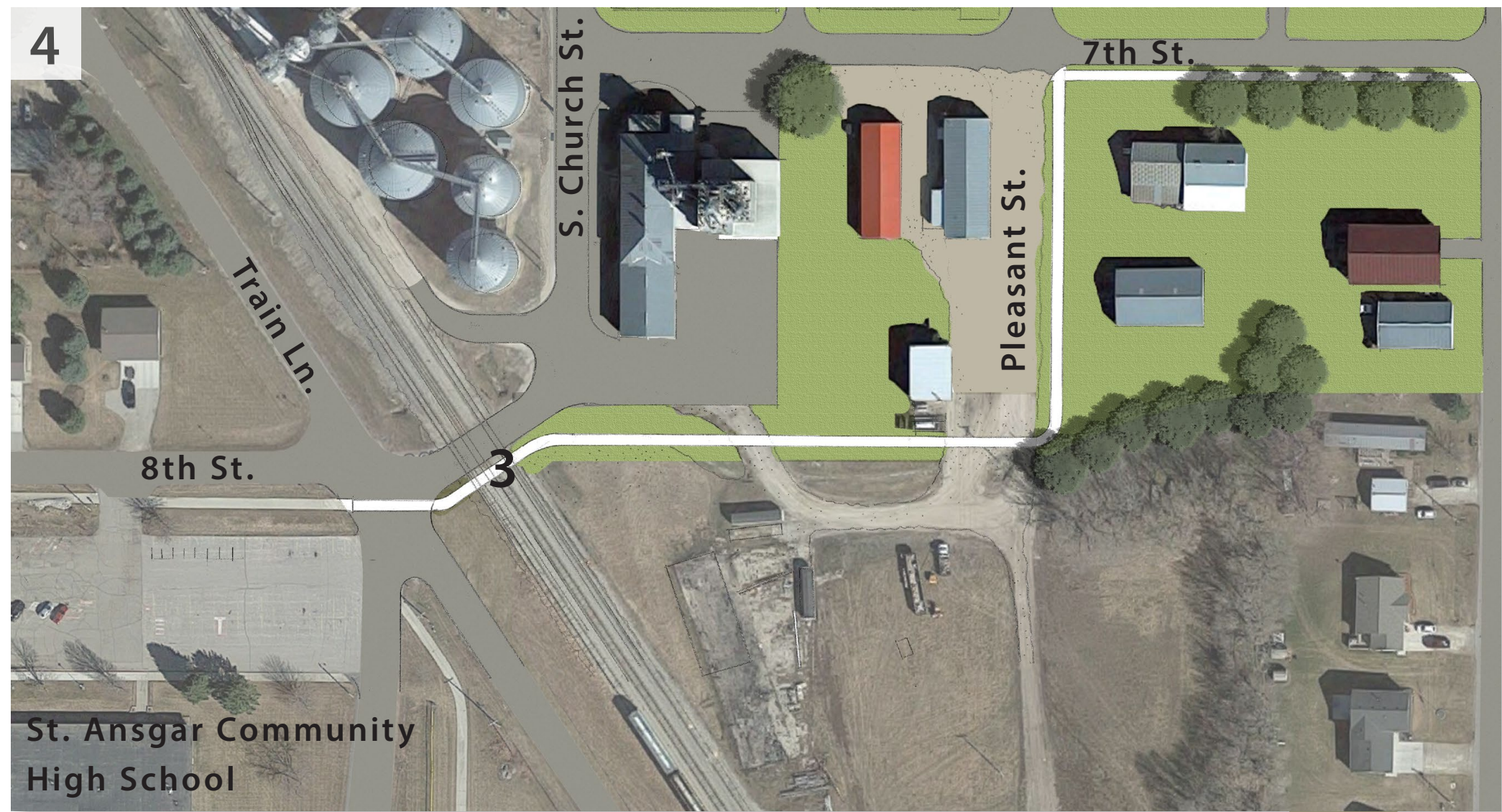
Proposed crosswalk and pedestrian signage across 4th Street



Proposed designated school route enhancements



The safety of pedestrians and bicyclists crossing the railroad tracks can be improved by adding signage, barriers and level pavement transitions. An example of this from Waterloo, Iowa is seen above.



Proposed pedestrian safe railroad crossing and trail extension

St. Ansgar Pedestrian Connections

Landscape Architects and Intern: Craig Ritland, PLA, FASLA, Samantha Price, PLA, RITLAND+KUIPER Landscape Architects and Jake Spitz, Iowa State University

Iowa Department of Transportation

Trees Forever

ISU Landscape Architecture Extension

ISU Extension Community and Economic Development

Summer 2016

IOWA'S
LIVING
ROADWAYS