

## Implementation and Action Plan

The ILR Community Visioning Program is just the beginning of the planning and design process for implementation of projects that contribute to an enhanced quality of life in Slater. It is the design team's intent to continue providing Slater with professional consulting services for significant future development and enhancement of community resources.

Expertise from a team of allied professions may be needed to successfully design and implement several of the identified improvement projects. A landscape architecture consultant is best suited to lead and manage the design process. This helps ensure that the community's goals are fully integrated into the improvement projects. An architect, civil engineer, electrical engineer, and structural engineer can all be managed with subconsultant agreements under the landscape architect's prime agreement with the city.

It is recommended that project implementation be approached using the following basic action plan:

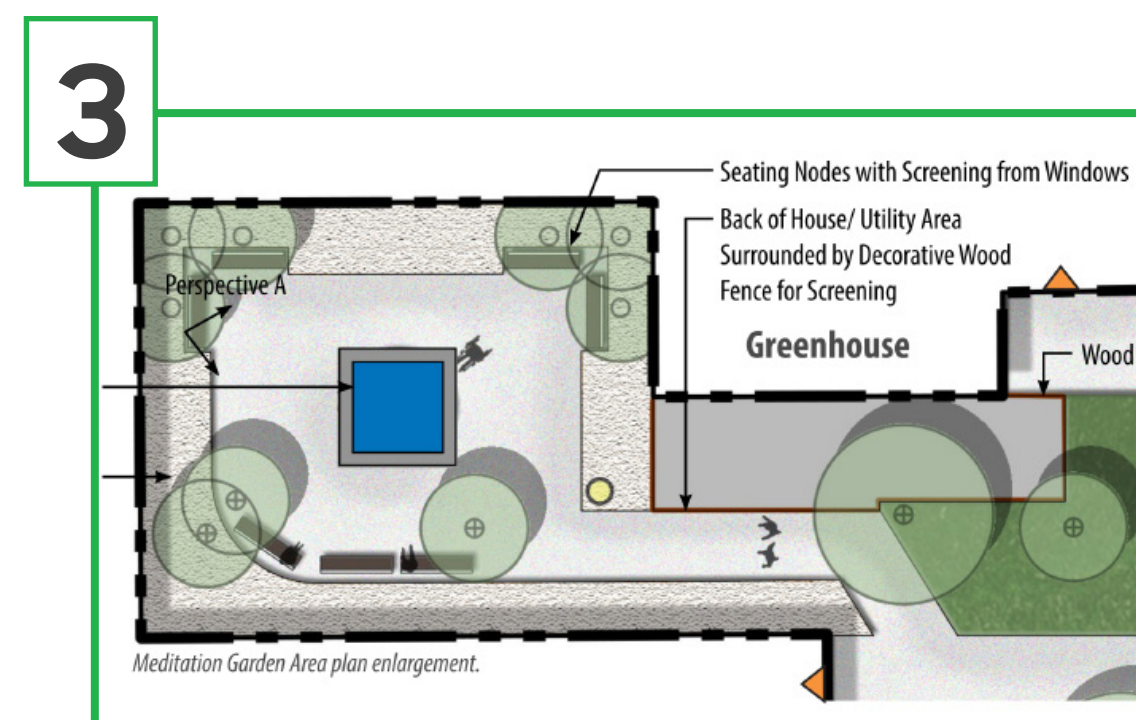
### Year 1

- 1** Schedule monthly steering committee meetings, confirm understanding scope and estimated costs of identified projects, and **prioritize the top three projects for design refinement and implementation.**
- 2** Determine the most practical first project for implementation and **identify all applicable and eligible grant funding opportunities.**
- 3** Utilizing Community Visioning deliverables and assistance from Trees Forever and a landscape architect, **submit application(s) for eligible and related grant programs.**
- 4** Upon a successful grant application and securing funding, **develop a schedule for project design, bidding, and construction, and select and execute a contract with a landscape architect as the lead design consultant.**

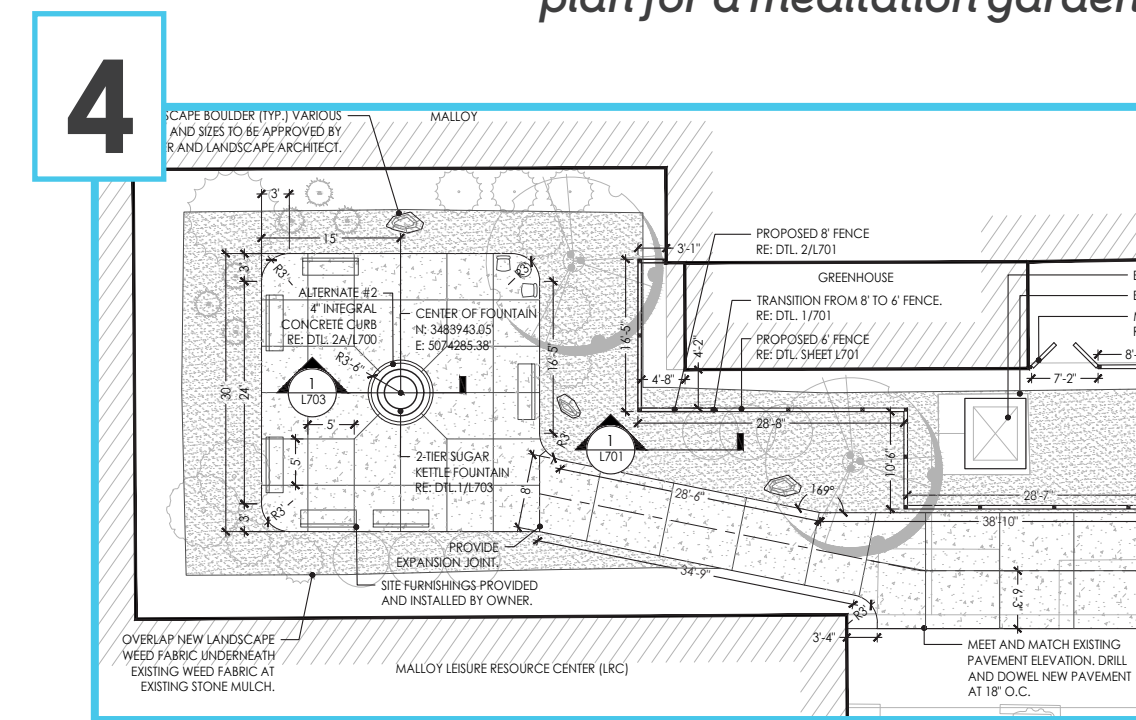
### Year 2

- 1** Reassess top three priority projects based on grant application success and **repeat Tasks 2 - 4 for a second project.**

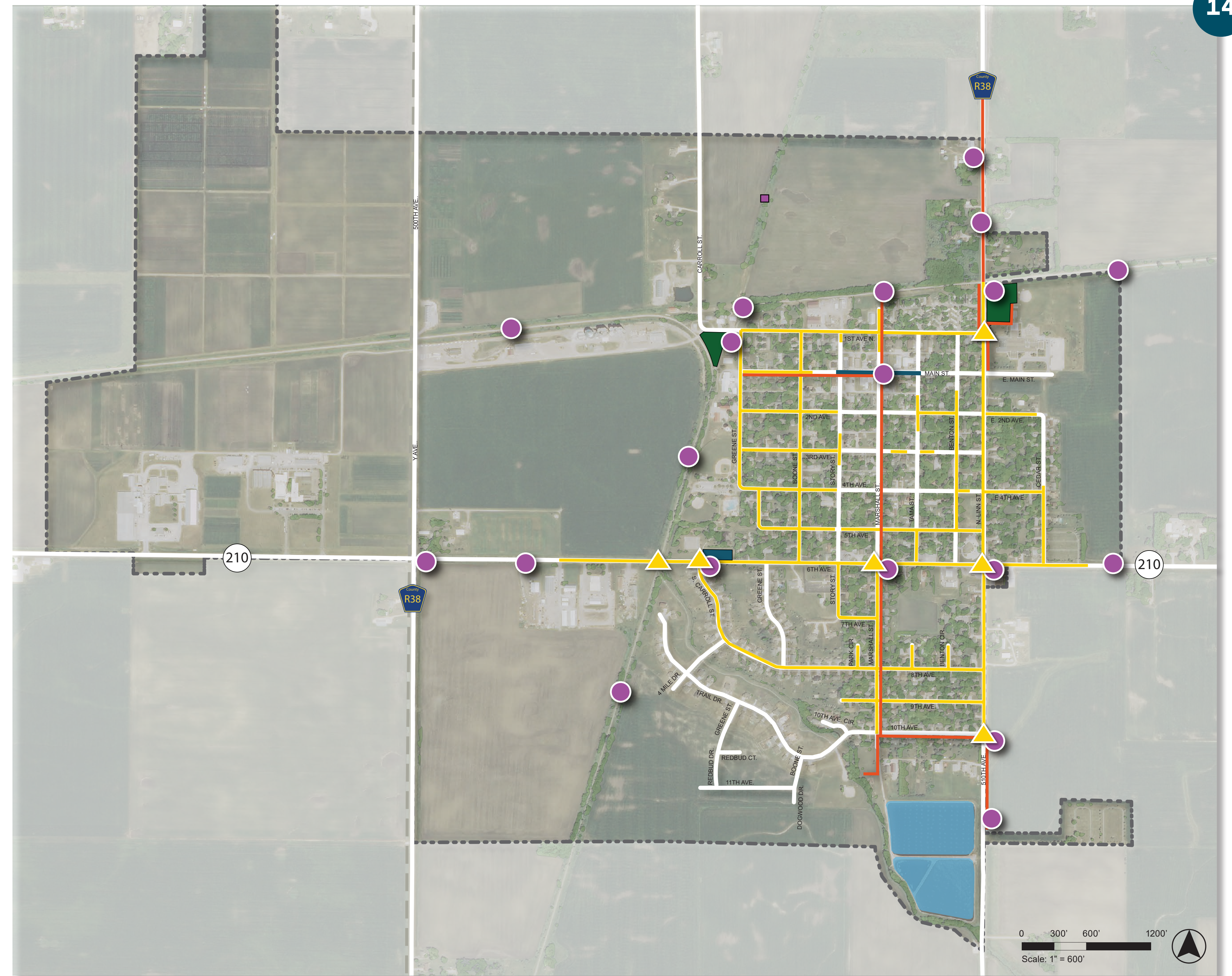
1	Community Visioning Project Areas	2	Grant Funding Opportunities
	Trails Improvements		
	Pedestrian Safety/ Access		
	Park/Year-round Recreation Improvements		
	Beautification		
	Way-finding and Branding Signage		



Example of a schematic landscape plan for a meditation garden.



Example of a landscape construction document for a meditation garden.



Slater Map Highlighting the Community Visioning Project Areas

### Grant Funding Opportunities Legend

- Iowa DNR REAP
- The Wellmark Foundation
- Keep Iowa Beautiful
- Iowa Economic Development Authority
- Iowa Department of Transportation
- Environmental Protection Agency
- Trees Forever
- Historical and Cultural Affairs

**Slater**

# Implementation Strategies

## Jeffrey L. Bruce & Company LLC

LAs: David Stokes PLA, ASLA, ASIC, ASBA, Lara Guldenpfennig PLA, ASLA  
Interns: Joseph Jennings, Susan Pegg

Iowa State University | Trees Forever | Iowa Department of Transportation

