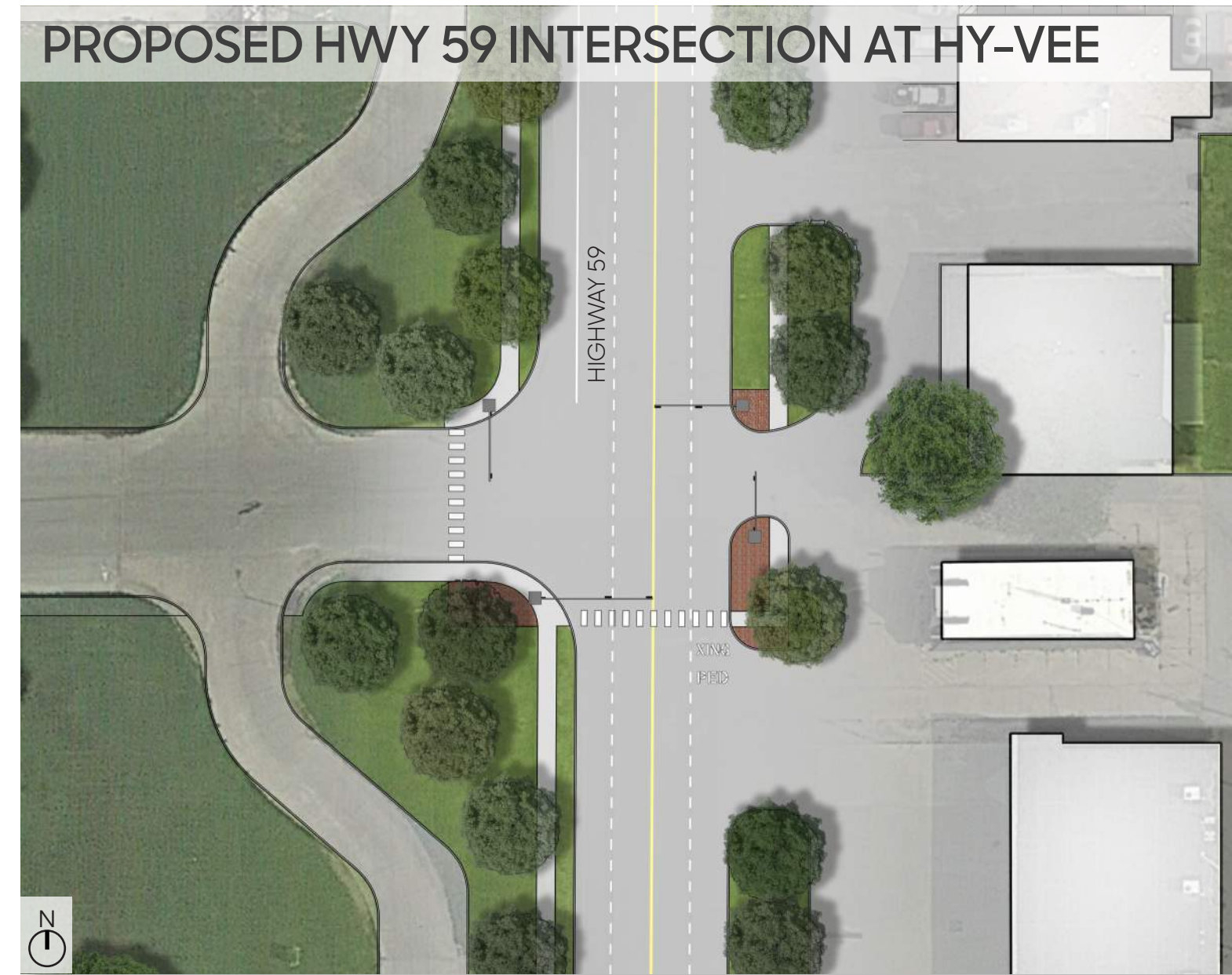
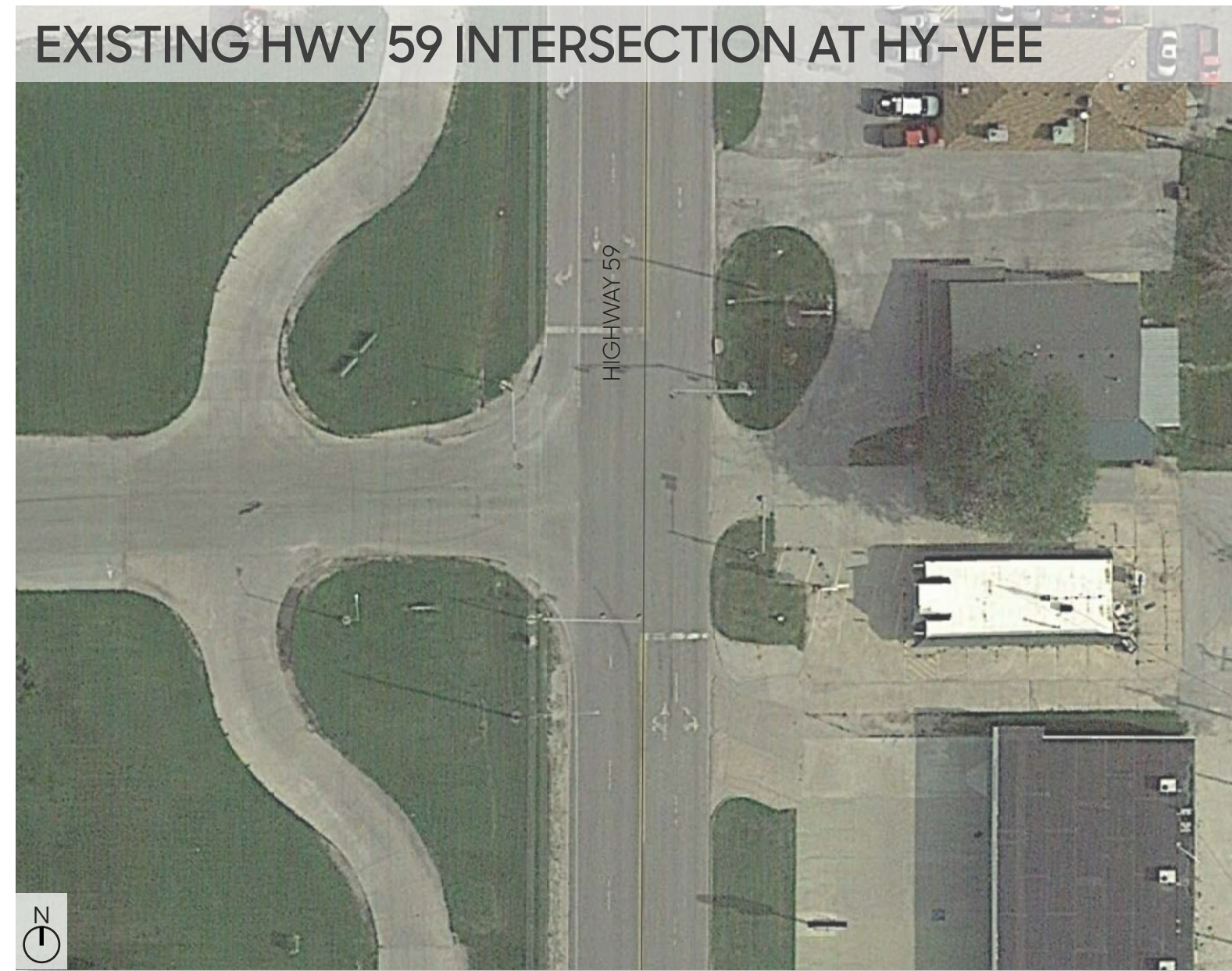


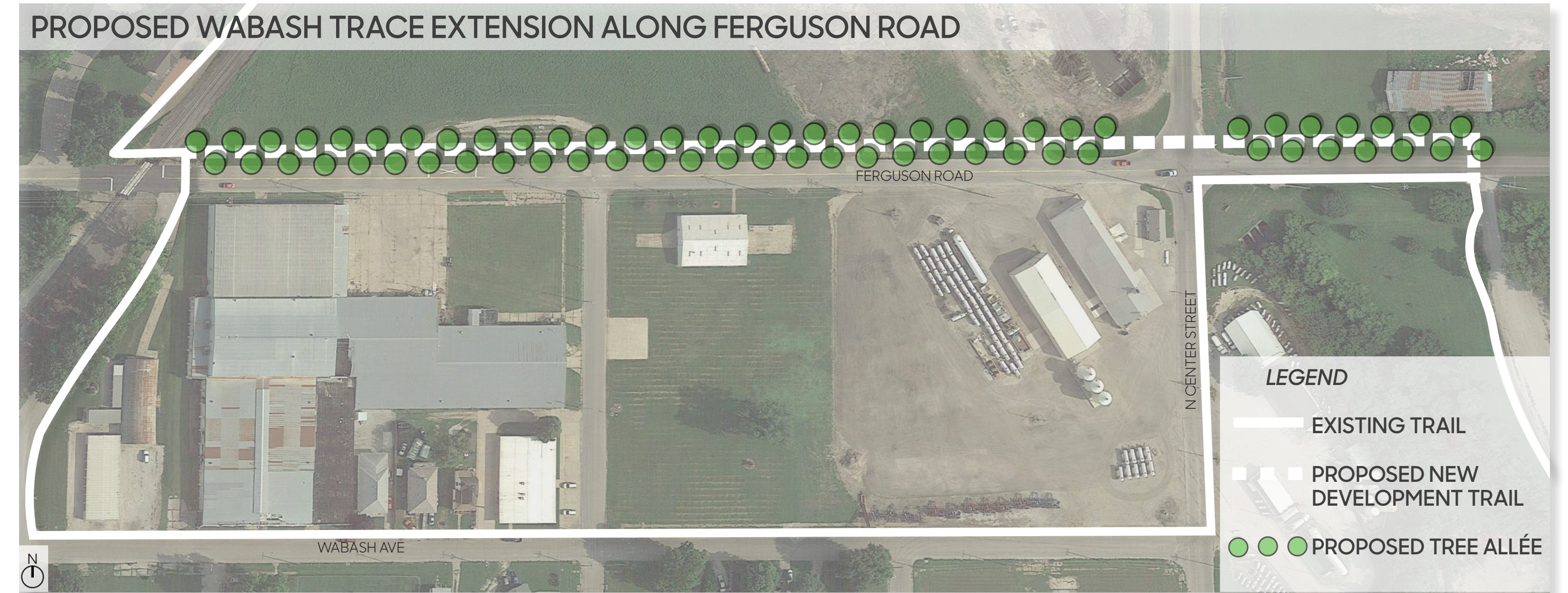
HWY 59 INTERSECTION



PROPOSED HWY 59 INTERSECTION AT HY-VEE



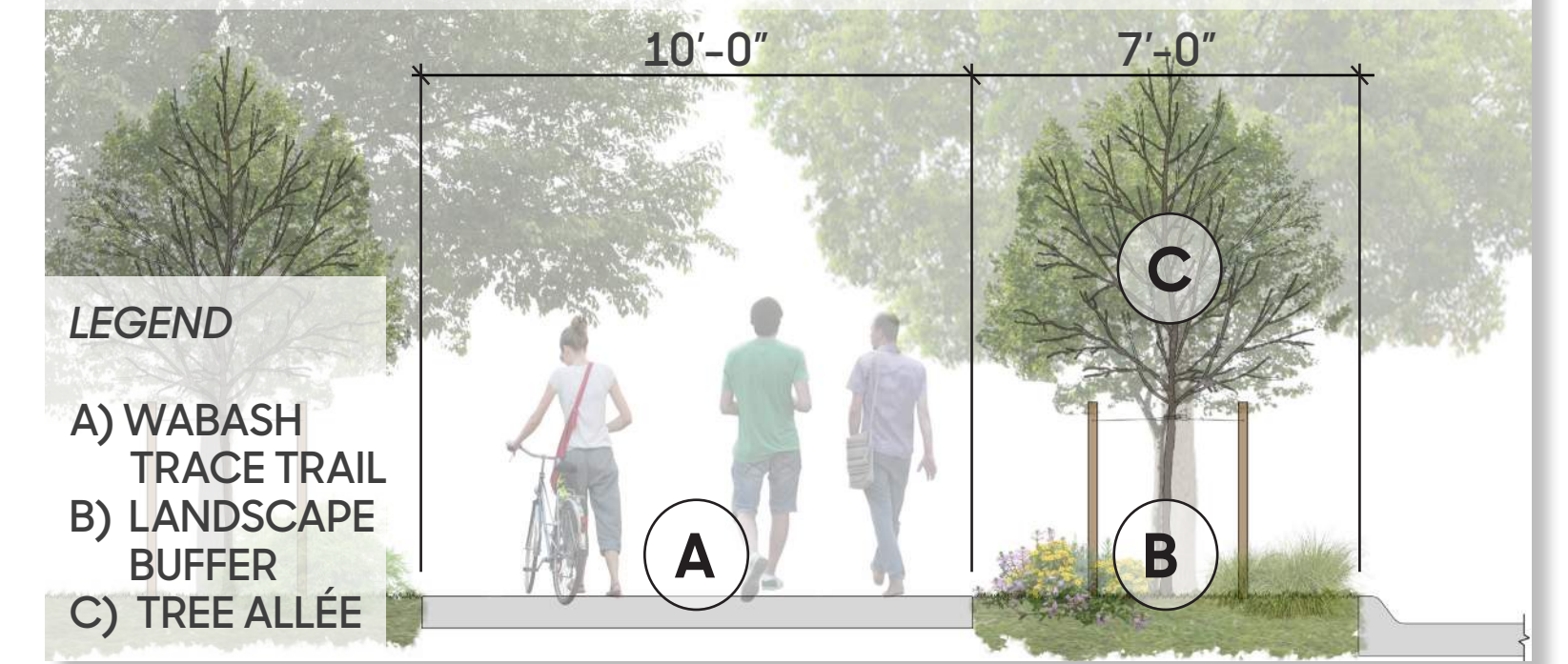
WABASH TRACE TRAIL EXTENSION



EXISTING TRACE AT FERG. ROAD - LOOKING EAST



PROPOSED TYPICAL TRACE SECTION



A concern of the steering committee was the pedestrian experience, or lack there of, along HWY 59. The highway is a four-lane, north-south, truck route with no sidewalks. The proposed design recommendations bring the pedestrian experience to the forefront by creating a more walkable place for pedestrians to utilize. The improvements include a new 6'-0" sidewalk from W Sheradian Ave to the end of the business district. The sidewalk is located 6'-0" from the road edge. At the traffic-signalized intersection of W Sheradian and Hy-Vee, pedestrian crosswalk striping and PED X-ING pavement markings will be added prior to the traffic signal. Each intersection node will be updated with ADA-accessible curb ramps, push-to-walk buttons, and brick pavers to add a specialty feature.

The Wabash Trace Trail runs through the northeast corner of Shenandoah. As the Trace winds along the east side of Sportsmans Park, it meets Ferguson Road just west of the intersection of Ferguson Road and N Sycamore Street. The recommended route for Trace users is to loop off Ferguson Road to N Sycamore, Wabash Ave, N Center Street, then turn back onto Ferguson Road. To avoid a lengthy re-route off the Trace, the proposed design recommendation is to provide (1) a 10'-0" trail that is (2) 7'-0" off Ferguson Road. The improvements would include an Allée of (3) tree plantings on both the north and south sides of the sidewalk to act as a safety buffer between Trace users and vehicular traffic. The improvements also include widening the shoulder of the railroad tracks, improving the existing crossing.