

Transportation Inventory & Analysis

Shell Rock, population 1,268, is located at the intersection of Highway 3 and County Roads T-63 and C-45, in eastern Butler County, roughly two miles west of U.S. 218.

Highway 3 and North Public Road is an intimidating intersection for bicyclists and pedestrians trying to utilize the Rolling Prairie Trail and limits trail users from entering town. The community would like a pedestrian-friendly crossing over/under Highway 3 and a designated pathway on North Public Road to create a greater sense of safety and provide a connection to the existing trail. Residents mentioned using Grove Street/238th Street to create a connection with other existing bike trails in nearby communities. These trail expansions would give Shell Rock residents safer bicycle and pedestrian routes throughout the community.

Shell Rock Elementary School is part of the Waverly-Shell Rock School District. During the visioning process, community members expressed interest in a more specific drop-off location at Shell Rock Elementary to reduce congestion before and after school. A clearly identified drop-off location would ease vehicular traffic and create a safer environment for parents and students traveling through the area.

The intersection of Cherry and Washington Street has heavy vehicular and pedestrian traffic because it is in the heart of downtown Shell Rock. This traffic causes visibility issues at the intersection, primarily for those crossing or turning onto Cherry Street from Washington Street.

Areas of Concern



(A) Cherry Street and Washington Intersection



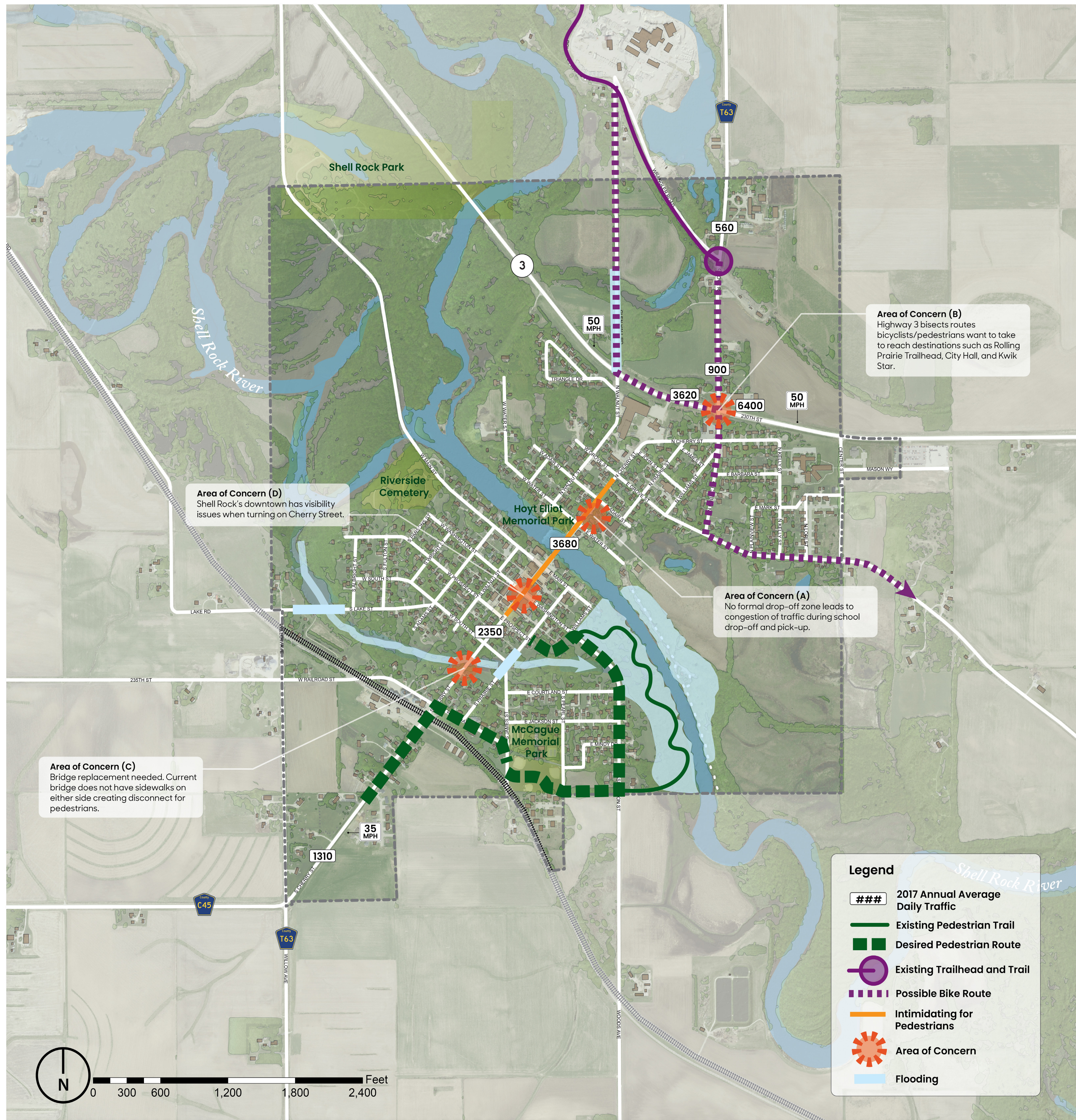
(B) Looking west on Highway 3



(C) South Cherry Street bridge



(D) Cherry Street near Shell Rock Elementary



Shell Rock Transportation Inventory

RITLAND+KUIPER Landscape Architects

Landscape Architects: Craig Ritland, FALSA & Samantha Price, ASLA

Intern: Amber Pearce

Iowa State University | Trees Forever | Iowa Department of Transportation

