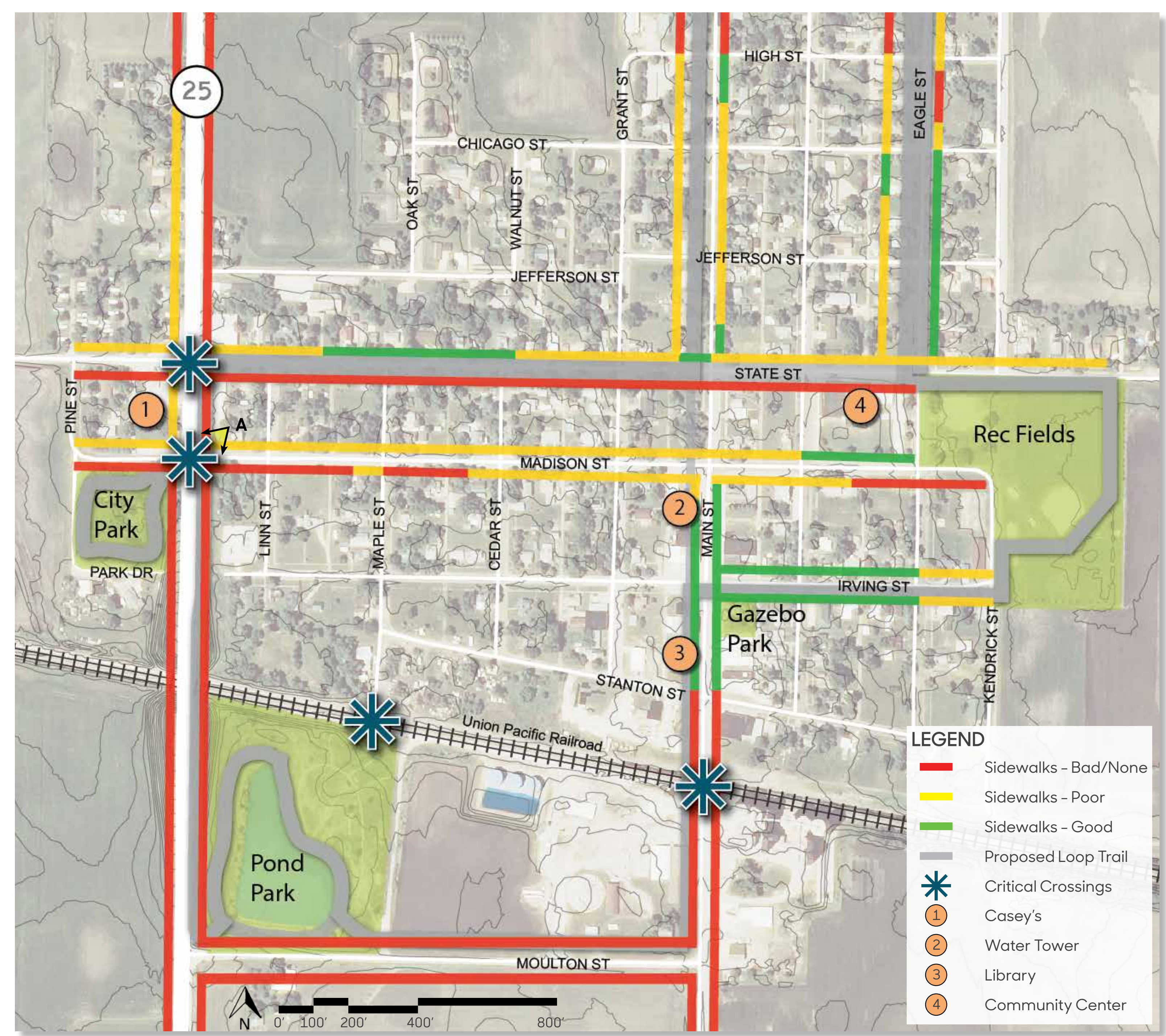




Perspective A: Proposed crossing at Highway 25 and Madison to access City Park and Casey's.



Sidewalk overview highlighting major intersections.

Sidewalks

Safety is a serious concern for pedestrians along Highway 25. There are no sidewalks along a majority of the roadway and several intersections yield dangerous crossings. State and Madison Streets in particular are problematic; and are in need of sidewalk repair. Above is a before/after look at the intersection of Madison St. and Hwy 25.

Providing signage that makes vehicles aware of walkers/bikers results in a much safer environment. To the right are examples of potential signs and material alterations to be used at these intersections.



Flashing signs draw attention to pedestrians crossing as well as material changes such as brick or colorful paintings.

