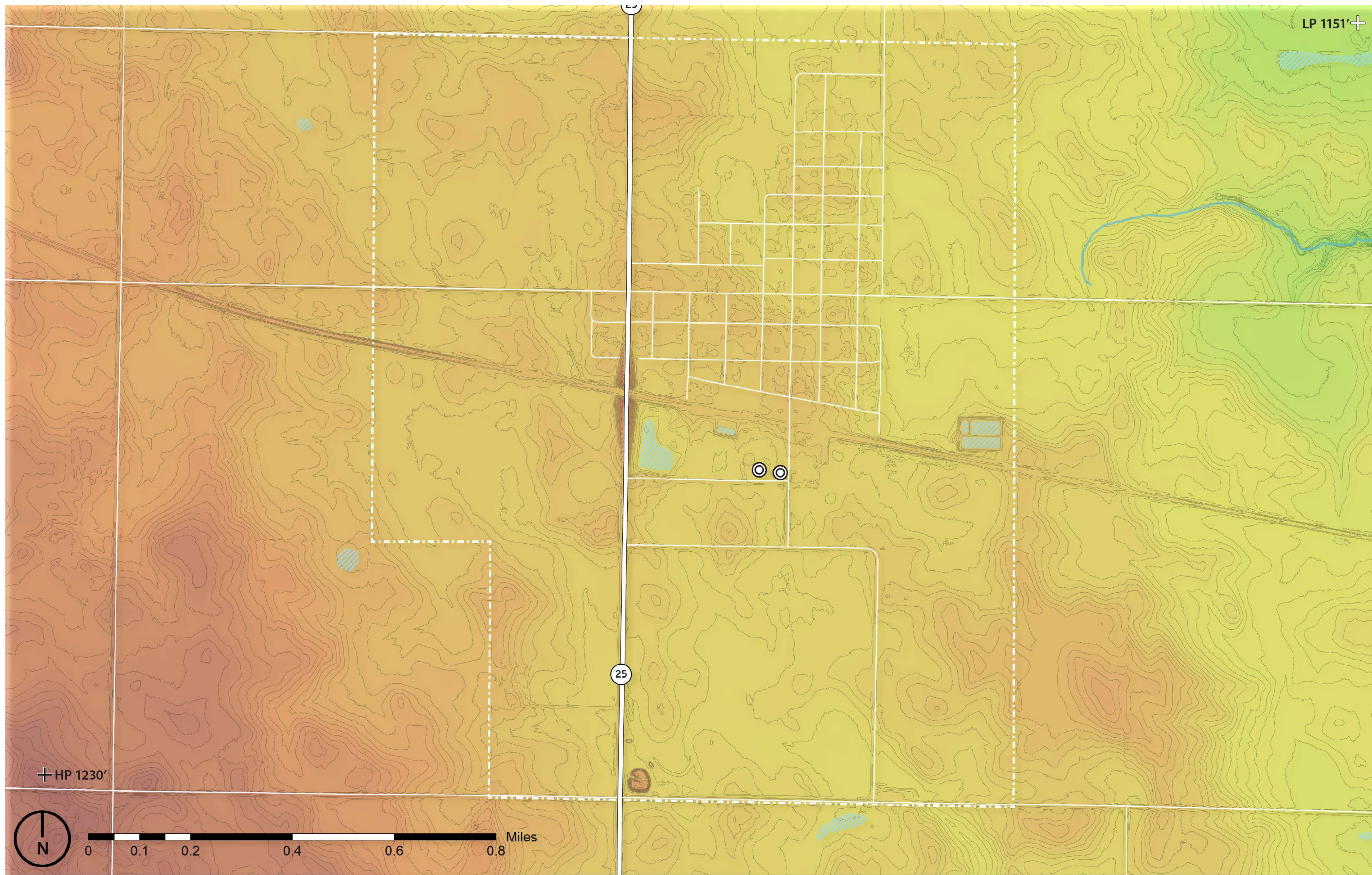
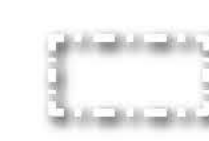


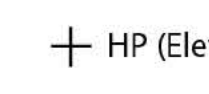



### Elevation and Topographic Features

The map to the left displays topographic differences in elevation using a combination of contour lines and the color gradient depicted in the legend. The high points and low points have also been located.

Note the relationship of your community to the surrounding elevation; is it located in a valley or on high ground, or is it split between the two?



-  City Limits
-  High Elevation  
↓  
Low Elevation
-  Water Wells
-  + HP (Elev.) High Points
-  + LP (Elev.) Low Points

Map Source: Iowa Department of Natural Resources, "Natural Resources Geographic Information Systems Library," <http://www.igsb.uiowa.edu/nrgislib/>.