

Overview

The crossroads of Scotch Grove is a gateway into the village offering an opportunity to celebrate the historical rural character of Scotch Grove. Themes of revitalization and the unique charm of Scotch Grove as a historic crossroads community were present throughout the Community Visioning process as well as in the The National Register of Historic Places report. The proposed improvement along Market Street, and especially along 3rd Street, take careful consideration to preserve Scotch Grove's unique historical narrative while providing safe, multi-modal transportation routes and parking along with contemporary "Complete Street" additions.

Safely crossing the intersection of Highway 38 and E17 was brought up by many residents at the focus groups and design workshop. To address this need, a pedestrian underpass at the Historic Depot Park allows residents to park at a new trailhead and make their way into the heart of downtown Scotch Grove. Along this path, the proposed streetscape plan includes a wetland restoration to address flooding that occurs along the southeast part of this intersection.

The intersection of Market and 3rd Streets reinstates The Village Crossroads. Along 3rd Street are "Complete Street" additions including street trees, light poles with American flags, sidewalks on both sides of the street, seating, and bike lanes/trails connecting Scotch Grove to larger Jones County and beyond.

Accessible parking and drop-off areas are placed along 3rd Street and the re-established historic road wrapping around the north edge of the village. These set the tone for future sites of development, including a Tiny Home Village and parking for the Antique Fair and Flea Market and The Grove Bar + Grill. As a whole, the improvements to Scotch Grove at a pedestrian level look to the future of Scotch Grove as the nexus of activities and development at a variety of scales.

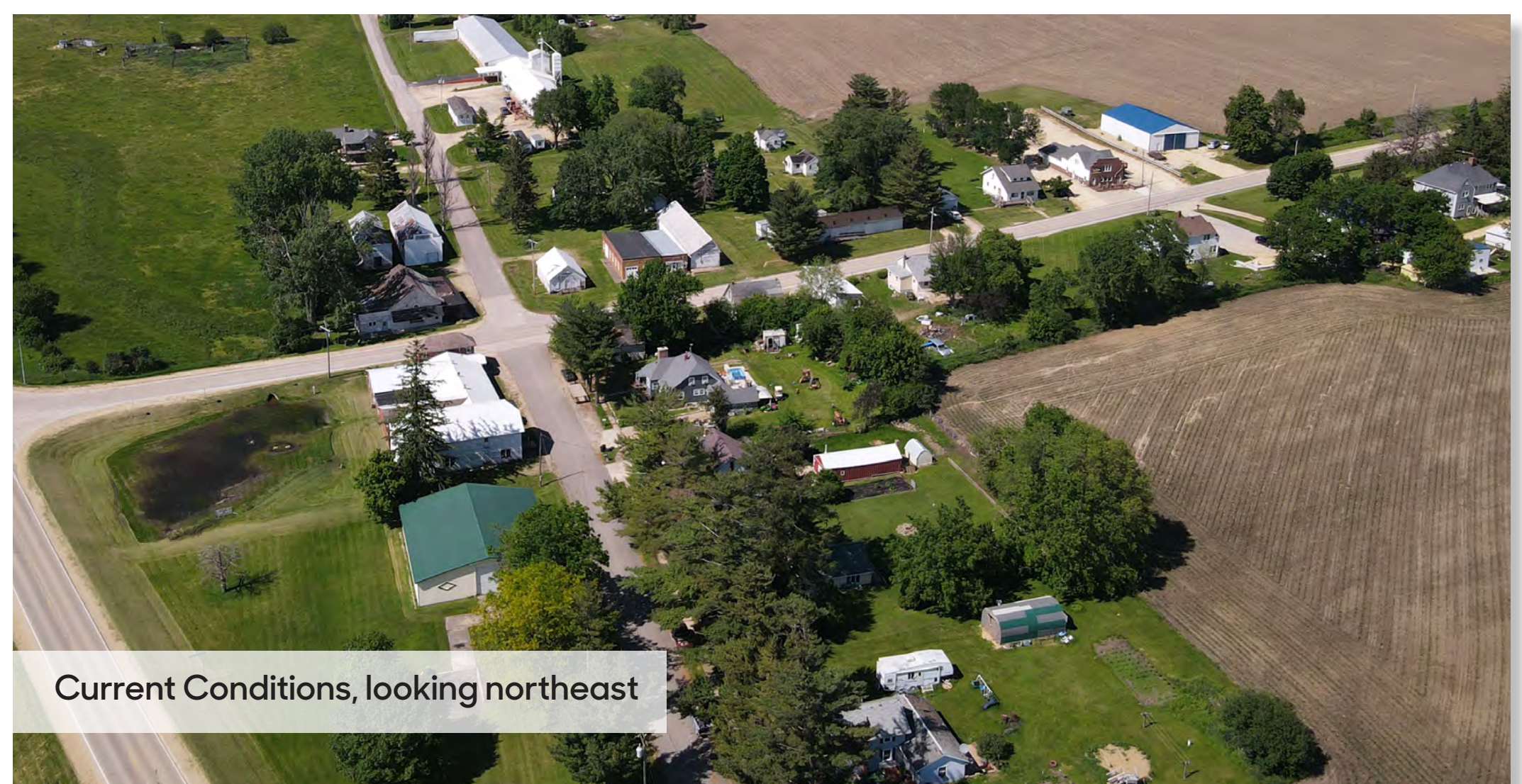
Board 10a shows proposed improvements. Board 10b provides a detailed view of the Village Crossroads with historical evidence. Boards 10c-10d include before and after views of the proposed improvements with annotations.



- Proposed Improvements**
1. Wetland Restoration
 2. The Crossroads
 3. New Parking
 4. Accessible Drop off
 5. Streetscape Vegetation
 6. Streetlights, Flags, Banners
 7. Tiny Home Village
 8. Historic Road
 9. Bike Trail
 10. Eastern Gateway



Current Conditions, looking east



Current Conditions, looking northeast

Focus Groups

"The heart of Scotch Grove is at the crossroads."

Design Workshop

"Sidewalks and Lights"

Emerging Themes

All demographics consider the absence of trails, sidewalks, and bike lanes a significant barrier to cyclists and pedestrians

Focus Groups

"Walking on County Road E17 is uncomfortable due to a lack of sidewalks and lighting."

Design Workshop

"Safe crossing across 38 and E17 intersection"

Emerging Themes

Participants frequently discussed the rich history of the Scotch Grove area

Scotch Grove

The Village Crossroads

S.LA\ Seelman Landscape Architecture

Landscape Architect: Brett Seelman, PLA, ASLA
 Project Manager / Associate: Alex Priest
 Landscape Architecture Intern: Lexi Banks
 Iowa State University | Trees Forever | Iowa Department of Transportation



Proposed: Crossroads "Complete Street"



- 1. ADA Crossing Point
- 2. Historic Brick Paving
- 3. Bike Lane
- 4. Delineated Crosswalk
- 5. Street Trees
- 6. Streetlights, Flags, Banners
- 7. Restored Buildings
- 8. Vegetated Buffer

"The overall feeling of the Scotch Grove Historic District is that of a small tightly-knit crossroads community and still reflects a sense of time and place as Scotch Grove was during the period of significance."

Scotch Grove's National Register of Historic Places Registration Form, 2013 (p. 31)

"Through its resources the historic district retains strong associations with Scotch Grove's historic function as a niche market center and rural crossroads community."

Scotch Grove's National Register of Historic Places Registration Form, 2013 (p. 31)

"At Applegate's Crossing they have started a town, and already have a store building erected, and other buildings in contemplation. It will be a convenient station for farmers."

Scotch Grove's National Register of Historic Places Registration Form, 2013 (p. 34-35)



"[In 2011], former and current residents of Scotch Grove and the surrounding area purchased most of the buildings with an eye toward rehabilitation and the preservation of the physical components and aesthetics of this largely intact crossroads community."

Scotch Grove's National Register of Historic Places Registration Form, 2013 (p. 58-59)

Photo credit:
L: Scotch Grove's National Register of Historic Places Registration Form, 2013

Scotch Grove

The Village Crossroads

S.L.A\ Seelman Landscape Architecture

Landscape Architect: Brett Seelman, PLA, ASLA
 Project Manager / Associate: Alex Priest
 Landscape Architecture Intern: Lexi Banks
 Iowa State University | Trees Forever | Iowa Department of Transportation



The Village Crossroads



3rd Street Improvements



Wetland Restoration



While drawn at scale from existing available resources, renderings are not intended for construction and were prepared to demonstrate the potential proposed design intent.

Scotch Grove The Village Crossroads

S.L.A\ Seelman Landscape Architecture

Landscape Architect: Brett Seelman, PLA, ASLA
Project Manager / Associate: Alex Priest
Landscape Architecture Intern: Lexi Banks

Iowa State University | Trees Forever | Iowa Department of Transportation



Scotch Grove Eastern Gateway



Market Street Improvements



Historic Road + Parking



While drawn at scale from existing available resources, renderings are not intended for construction and were prepared to demonstrate the potential proposed design intent.

Scotch Grove The Village Crossroads

S.LA\ Seelman Landscape Architecture
Landscape Architect: Brett Seelman, PLA, ASLA
Project Manager / Associate: Alex Priest
Landscape Architecture Intern: Lexi Banks
Iowa State University | Trees Forever | Iowa Department of Transportation

