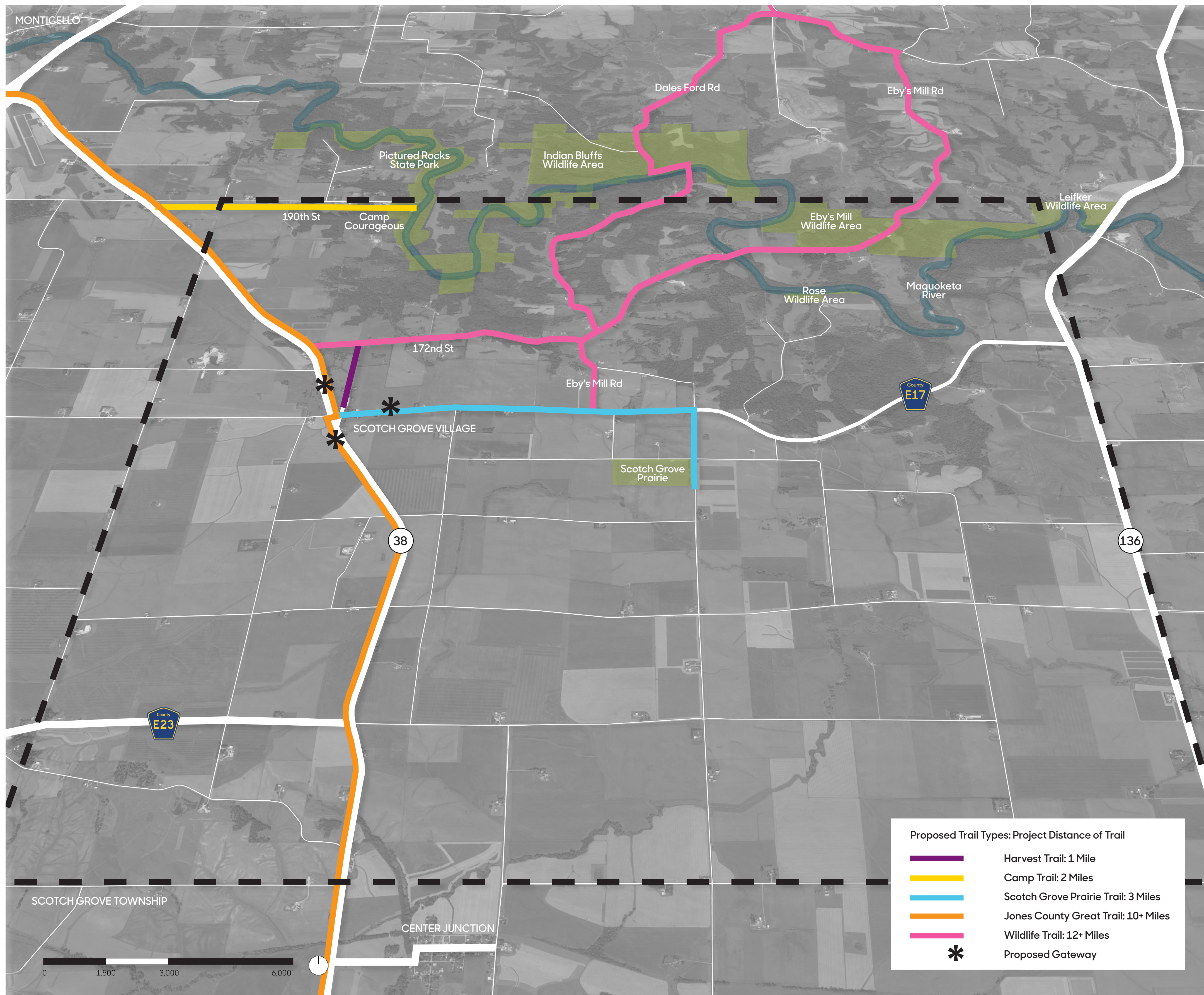


Overview

Scotch Grove is uniquely positioned as the center point for large-scale connections to 2,250+ acres of wildlife areas and other communities in Jones County and eastern Iowa through a strategic trail system. In analyzing the Iowa Department of Transportation's rights-of-way; paved/gravel roadways; and accounts from the steering committee, focus groups, and design workshop, two themes emerged: 1. Pedestrian and cyclist safety and 2. Connections to and beyond nearby towns, natural areas, and the Maquoketa River.

Five new trails in the Scotch Grove Township take advantage of the natural beauty and pragmatic realities along 28 miles of roads. Each paved trail is eight feet wide and employs state, county, and local agencies to include prairie and native plant restorations within the rights-of-way. Along the Level B road north of Market Street is the proposed Harvest Trail, featuring one mile of community gardens, fruit trees, and edible plants. A concern for the safety of residents and campers/staff at Camp Courageous prompted the addition of Camp Trail. This trail connects the Jones County Great Trail to Pictured Rocks County Park. Extending east along 3rd Street, the Scotch Grove Prairie Trail connects Historic Depot Park through the village to the prairie oasis three miles away. Two expansive trails encourage larger connections between Scotch Grove, Scotch Grove Township, Jones County, and eastern Iowa. The 12+ mile long Wildlife Trail uses part of the Scotch Grove Prairie Trail to connect north along Eby's Mill Road and Dales Ford Road into managed natural areas, the Maquoketa River, and Dubuque. Additionally, the Jones County Great Trail takes the most expansive approach to making local and regional pedestrian connections. Using the rights-of-way along Highway 38, this trail extends north out of Scotch Grove connecting with the Harvest and Camp Trails to Monticello and beyond. Utilizing the underpass at the Historic Depot Park, the trail connects to the Scotch Grove Prairie Trail and Wildlife Trail and then south with connections to Anamosa and Cedar Rapids.



Focus Groups
"I think... a trail system [is needed] into Monticello as well--Monticello to Pictured Rocks, Pictured Rocks onto Scotch Grove."

Design Workshop
"Create a series of trails coming out of and into Scotch Grove."

Emerging Themes
A trail system is a priority among residents; a multi-use Jones County loop trail was also mentioned

Focus Groups
"...a bike lane would be really smart on Highway 38 because that is actually a well-known bike route..."

Design Workshop
"Use the right-of-ways on roads for trails; connect to trailheads and boat ramps along River."

Emerging Themes
All user groups proposed incorporating bike lanes along major roadways

Scotch Grove Regional Trail Connections

S.LA\ Seelman Landscape Architecture

Landscape Architect: Brett Seelman, PLA, ASLA
Project Manager / Associate: Alex Priest
Landscape Architecture Intern: Lexi Banks

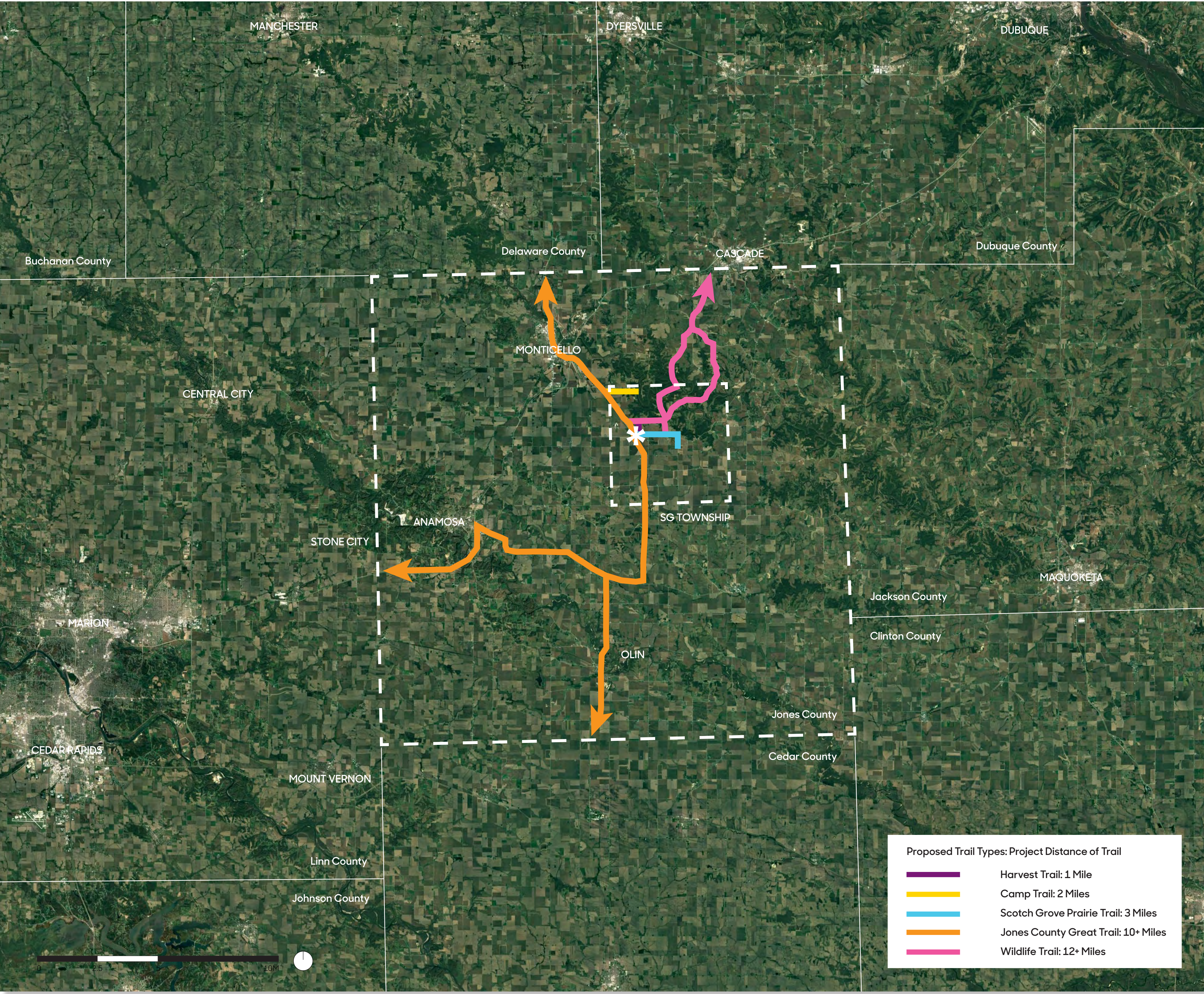
Iowa State University | Trees Forever | Iowa Department of Transportation



Scotch Grove and Beyond

At the Design Workshop, participants were asked to describe the location of Scotch Grove. One resident wrote, "In the rolling hills of a Grant Wood painting." These vistas in and around the Scotch Grove Township create an opportunity to connect to the unique natural and rural attributes of the Scotch Grove Township and Jones County; the birthplace of Grant Wood.

Throughout the Community Visioning process, pedestrian-focused trails remained at the forefront of discussion. Within this proposed 28+ mile trail system, Scotch Grove is the epicenter. The trails system of Scotch Grove is designed to be implemented over time, utilizing only public land, roadways, and rights-of-ways and connecting to existing and proposed trail initiatives in the region. Through coordination with local, county, state, and national agencies, this trail system is an ambitious and deliberate attempt at connecting the Scotch Grove Township with the assets within and beyond these boundaries with future desired connections between Cedar Rapids and Dubuque. Together and individually, these trails are about building connections, fostering community, and alliances with the countryside ethos.



Grant Wood
Stone City, Iowa (1930)
Oil on wood panel
30.25 x 40 inches
Courtesy: Joslyn Art Museum

Scotch Grove Regional Trail Connections

S.L.A\ Seelman Landscape Architecture
 Landscape Architect: Brett Seelman, PLA, ASLA
 Project Manager / Associate: Alex Priest
 Landscape Architecture Intern: Lexi Banks
 Iowa State University | Trees Forever | Iowa Department of Transportation



Trail Type 1: Harvest Trail
Total Proposed Distance: 1 Mile



The Harvest Trail is a one mile, eight foot-wide paved trail in the right-of-way of 116th Avenue, a Level B road, extending from Market Street to 172nd Street. Harvest Trail features edible plants, fruit and nut trees, and shrubs, a deer fence, and a trailhead. The trailhead functions as both a storage facility and co-op for selling food and creating spaces for cross-generational learning. The Harvest Trail responds to the community's desire to make 116th Avenue safe for pedestrians and the steering committee's hope for a unique space for instituting new narratives around learning and growing food in the Heartland.

Scotch Grove

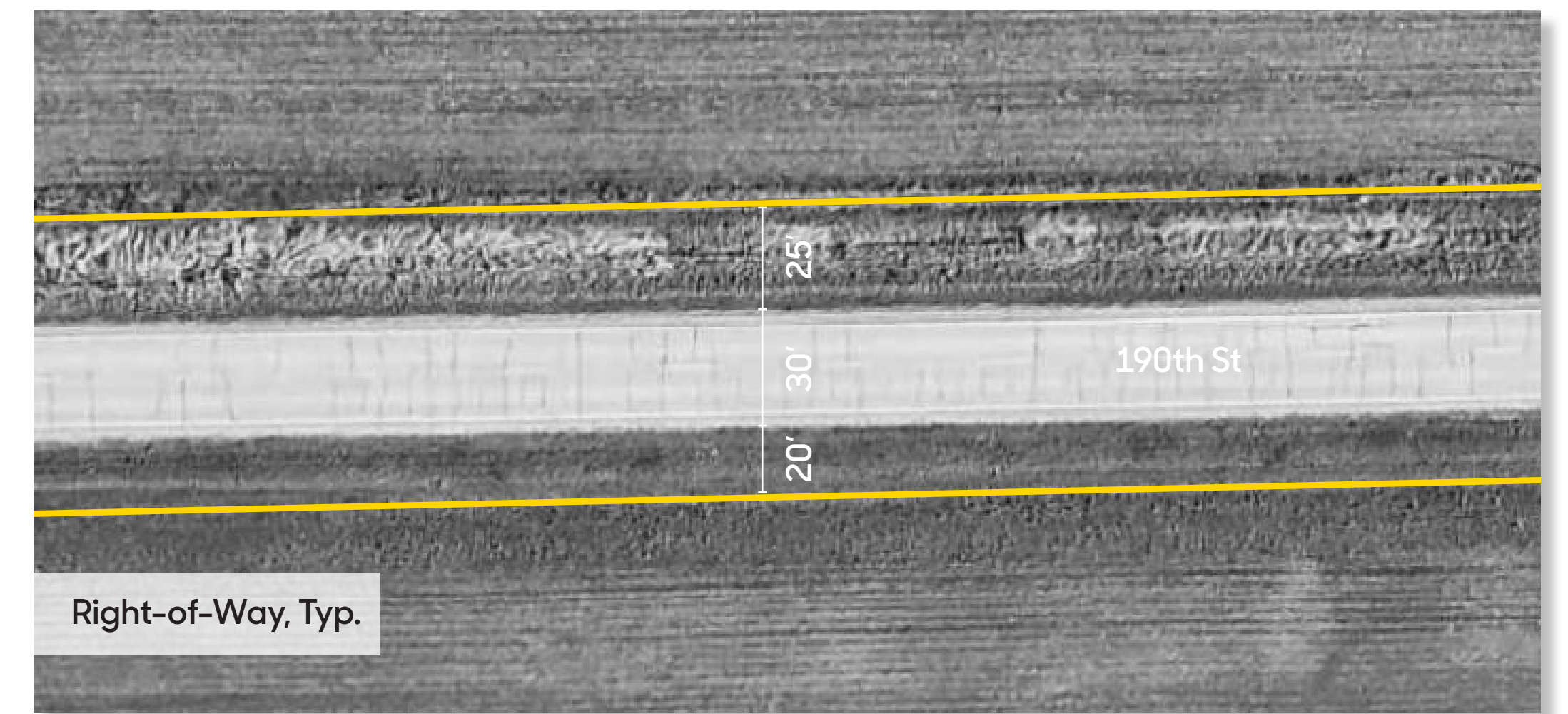
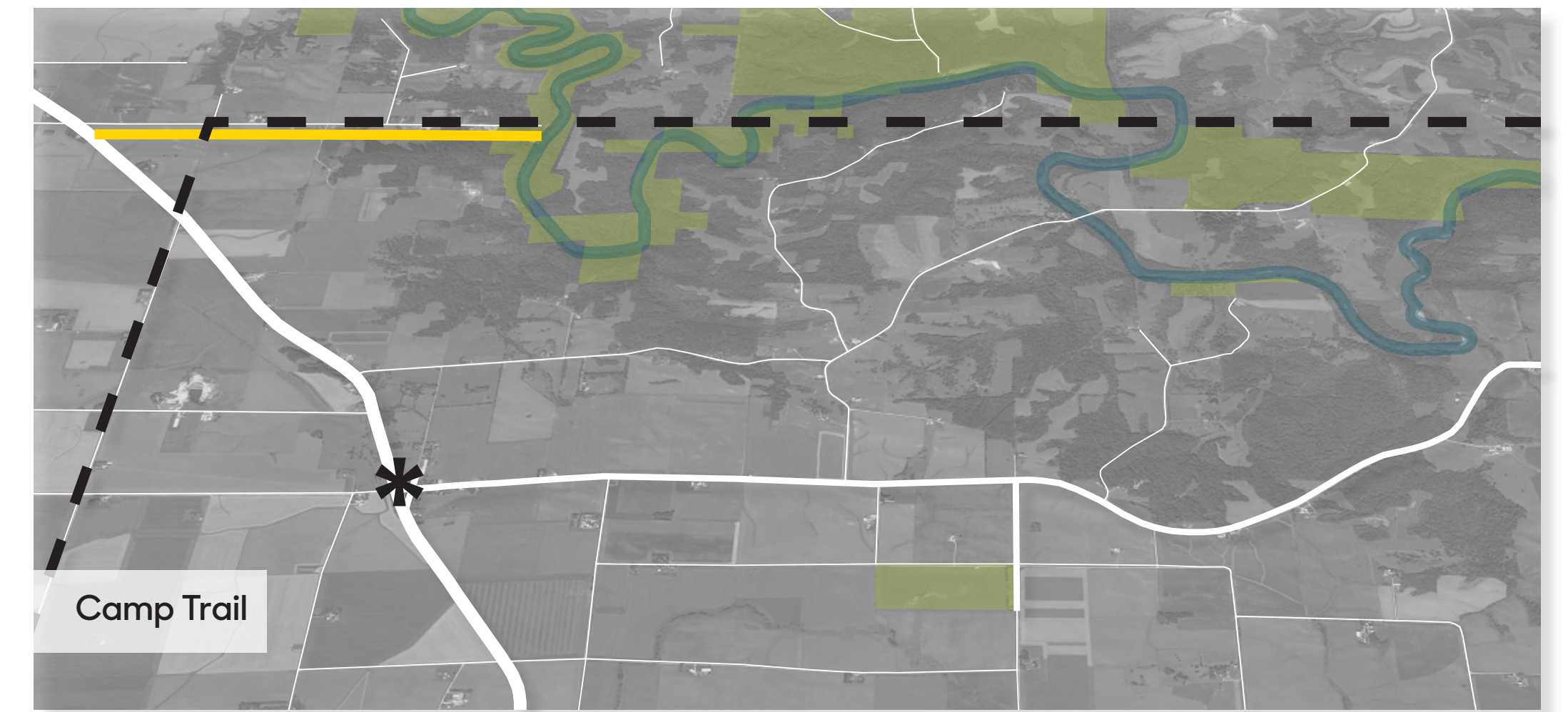
Regional Trail Connections

S.LA\ Seelman Landscape Architecture

Landscape Architect: Brett Seelman, PLA, ASLA
 Project Manager / Associate: Alex Priest
 Landscape Architecture Intern: Lexi Banks
 Iowa State University | Trees Forever | Iowa Department of Transportation



Trail 2: Camp Trail
Total Proposed Distance: 2 Miles



At the focus groups and design workshop, community members discussed 190th Street as a desirable location for a trail in the right-of-way. The Camp Trail is a two-mile, eight-foot wide, paved trail connecting the Jones County Great Trail along Highway 38 to Camp Courageous and Pictured Rocks State Park. Along this stretch of the Scotch Grove trail system, the rights-of-way feature a restored prairie ecosystem with educational signage about Iowa's native ecosystems and places for rest. The Camp Trail is designed with accessibility in mind to accommodate the campers and visitors at Camp Courageous and the active users of Pictured Rocks.

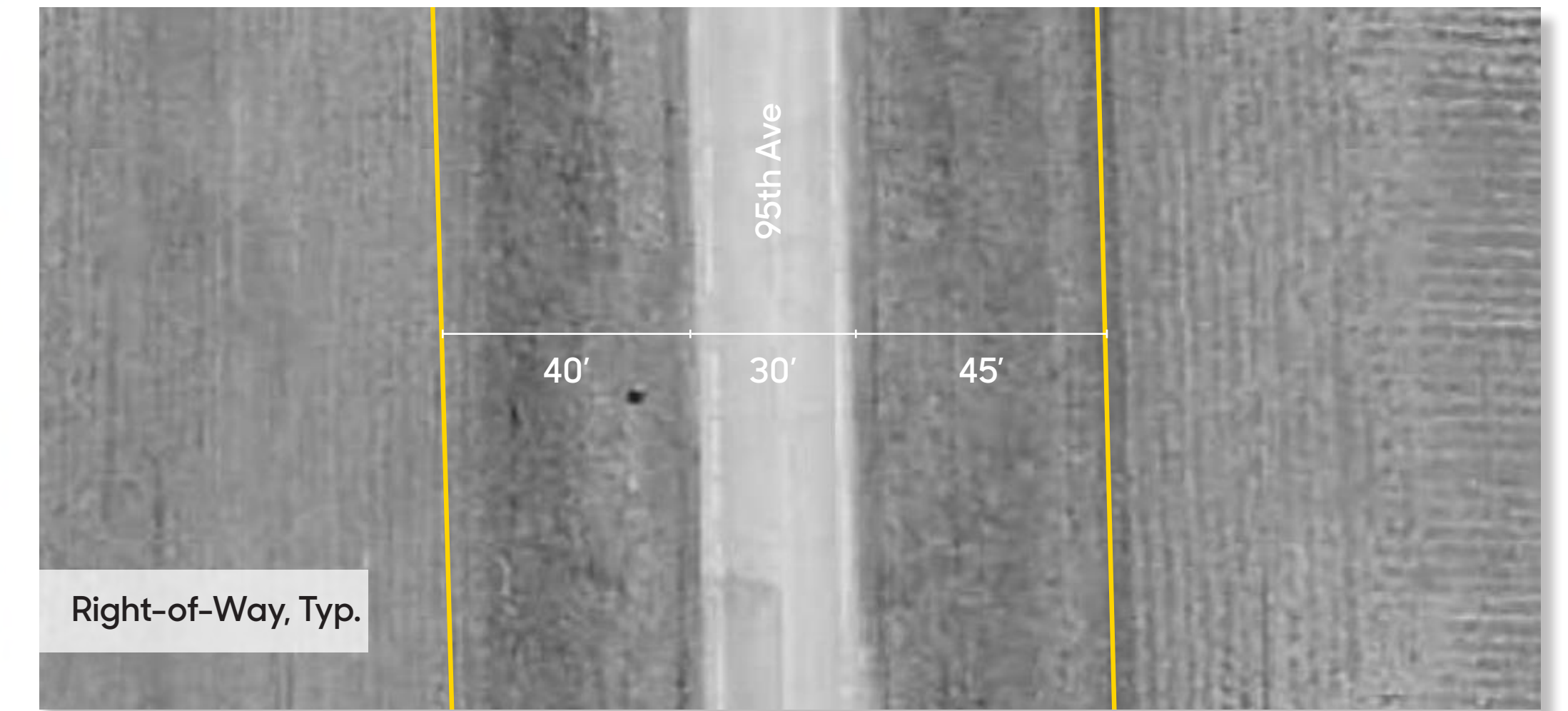
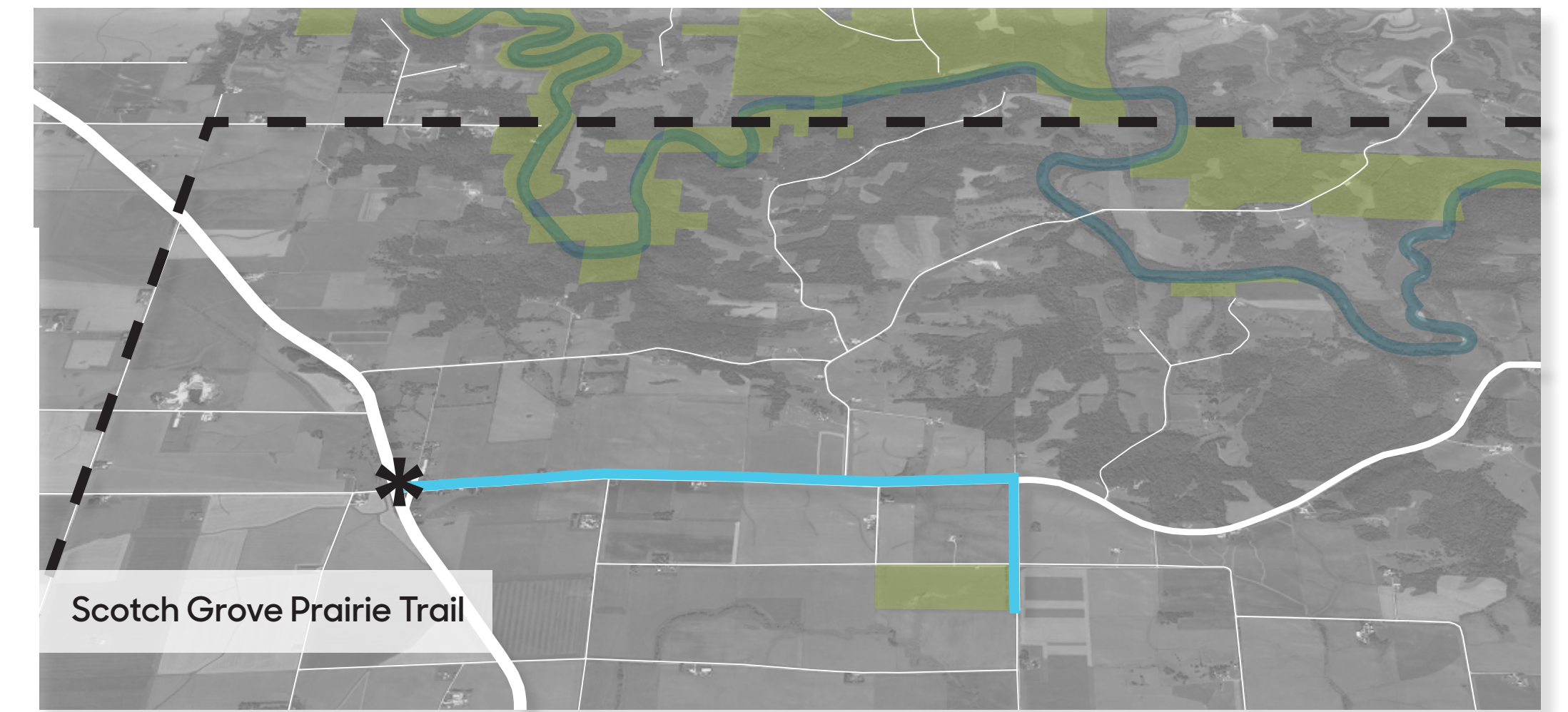
Scotch Grove
Regional Trail Connections

S.LA\ Seelman Landscape Architecture

Landscape Architect: Brett Seelman, PLA, ASLA
Project Manager / Associate: Alex Priest
Landscape Architecture Intern: Lexi Banks
Iowa State University | Trees Forever | Iowa Department of Transportation



Trail 3: Scotch Grove Prairie Trail
Total Proposed Distance: 3 Miles



Following the newly designed streetscape within the Village Crossroads, the three-mile-long Scotch Grove Prairie Trail is the spine for the Scotch Grove trail system, connecting to three other trails—the Jones County Great Trail, Harvest Trail, and the Wildlife Trail—and bringing trail users to one of the most discussed assets of the township, the Scotch Grove Prairie. The eight-foot-wide paved trail utilizes the rights-of-way and includes a restored prairie ecosystem to extend the Scotch Grove Prairie into the village. Educational signage populates the trail to generate learning opportunities about prairies, plant and wildlife identification, and the importance of restoration along Iowa’s roadways.

Scotch Grove Regional Trail Connections

S.LA\ Seelman Landscape Architecture

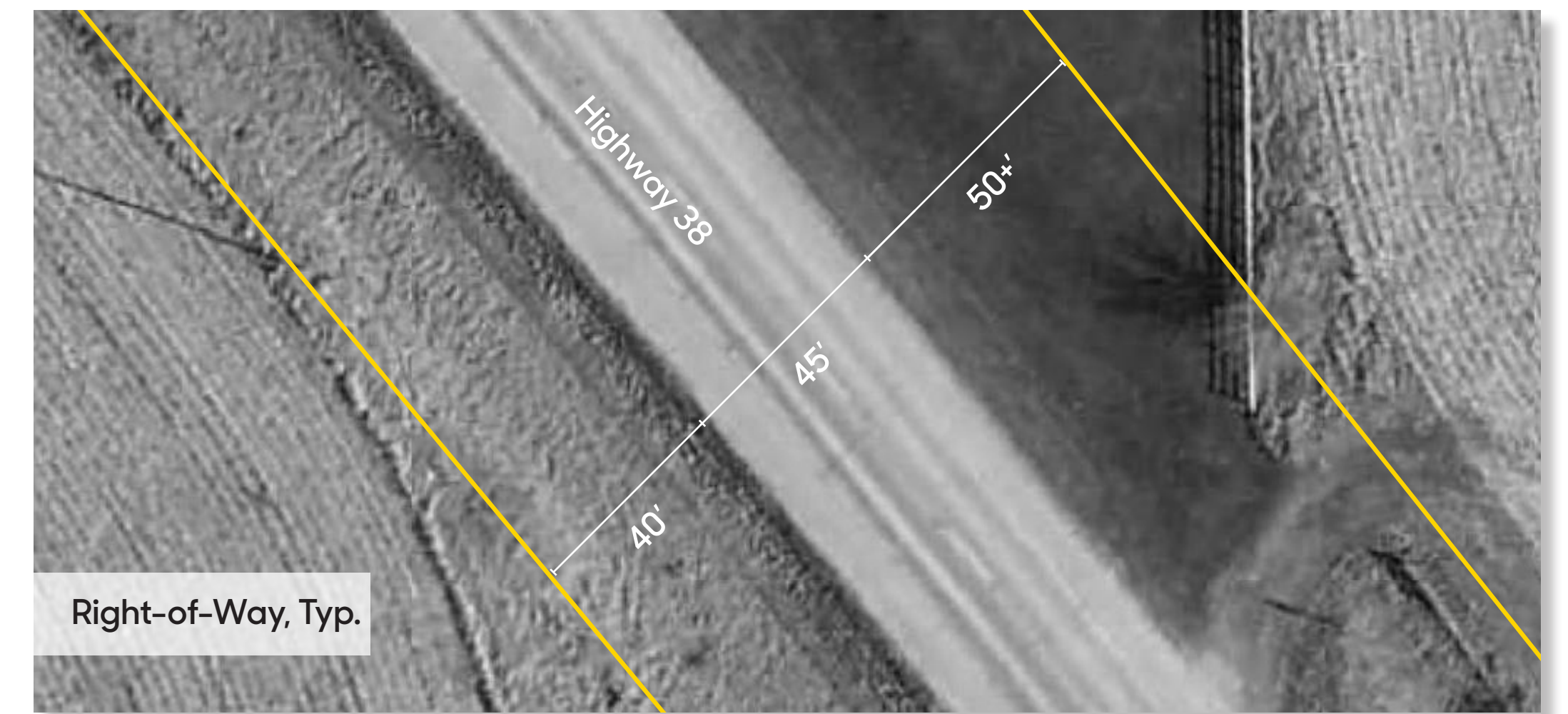
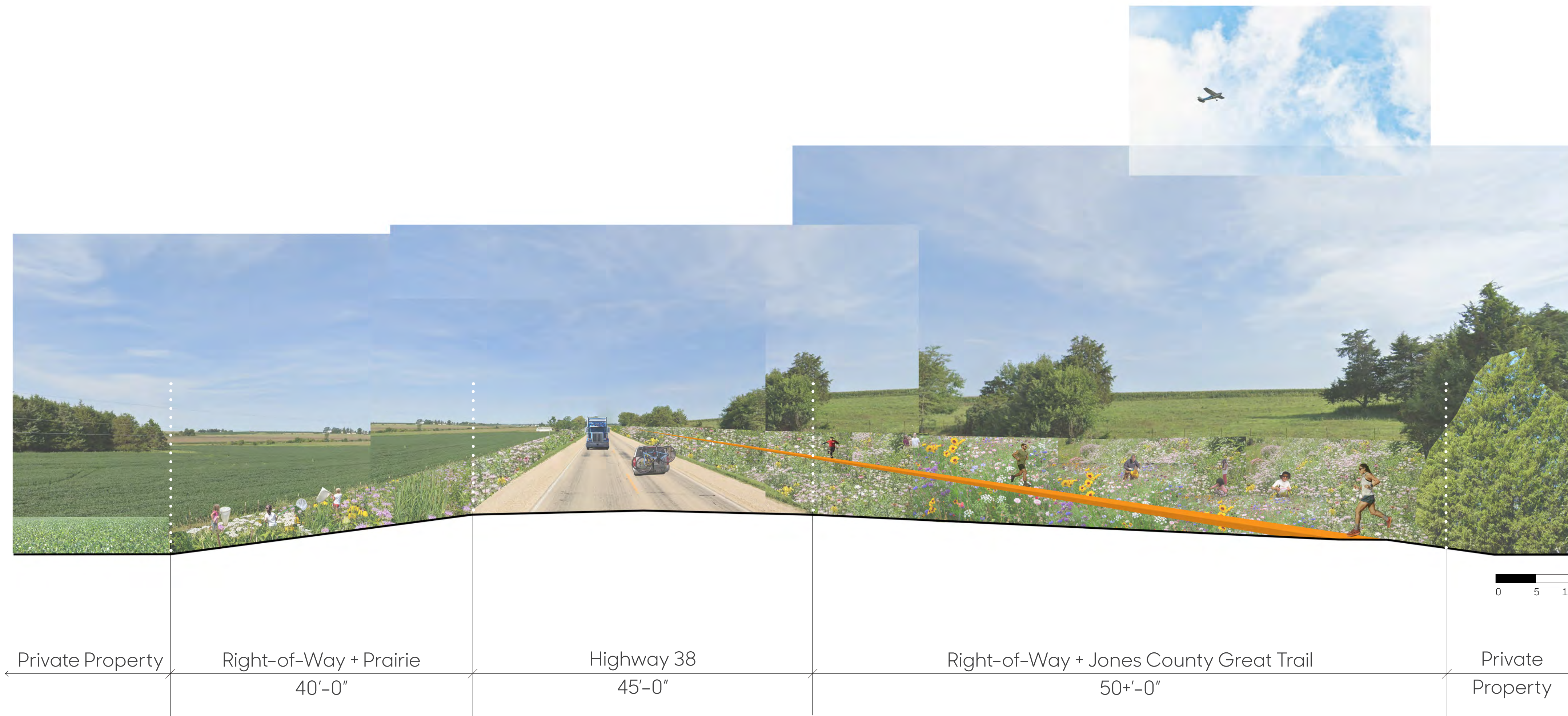
Landscape Architect: Brett Seelman, PLA, ASLA
Project Manager / Associate: Alex Priest
Landscape Architecture Intern: Lexi Banks

Iowa State University | Trees Forever | Iowa Department of Transportation



Trail Type 4: Jones County Great Trail

Total Proposed Distance: 10+ Miles



Safety concerns for pedestrians on Highway 38 were brought up consistently throughout the visioning process. Additionally, regional connections to Monticello, Dubuque, and Cedar Rapids were priorities for residents of Scotch Grove. The Jones County Great Trail utilizes the rights-of-way along Highway 38 for a paved trail and prairie restoration on over 10 miles of the highway. The eight-foot-wide trail connects with the Camp Trail, Scotch Grove Prairie Trail, and importantly, the Village Crossroads. An underpass allows pedestrians to safely cross Highway 38 and the trailhead at the Historic Depot Park allows trail users an opportunity to rest and connect with the history of Scotch Grove. For the Jones County Great Trail, Scotch Grove is the center point for experiences and connections in the unique rural geography of Jones County.

Scotch Grove Regional Trail Connections

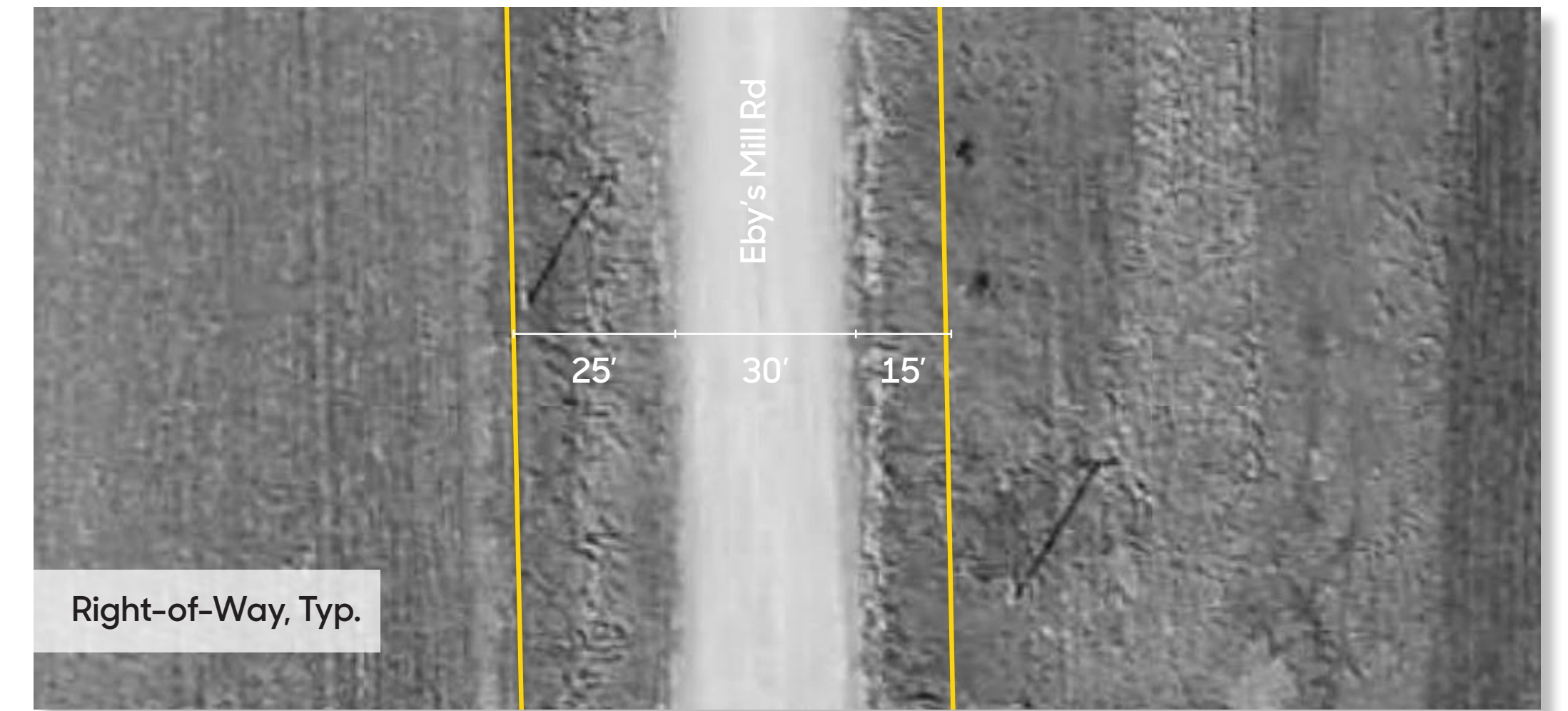
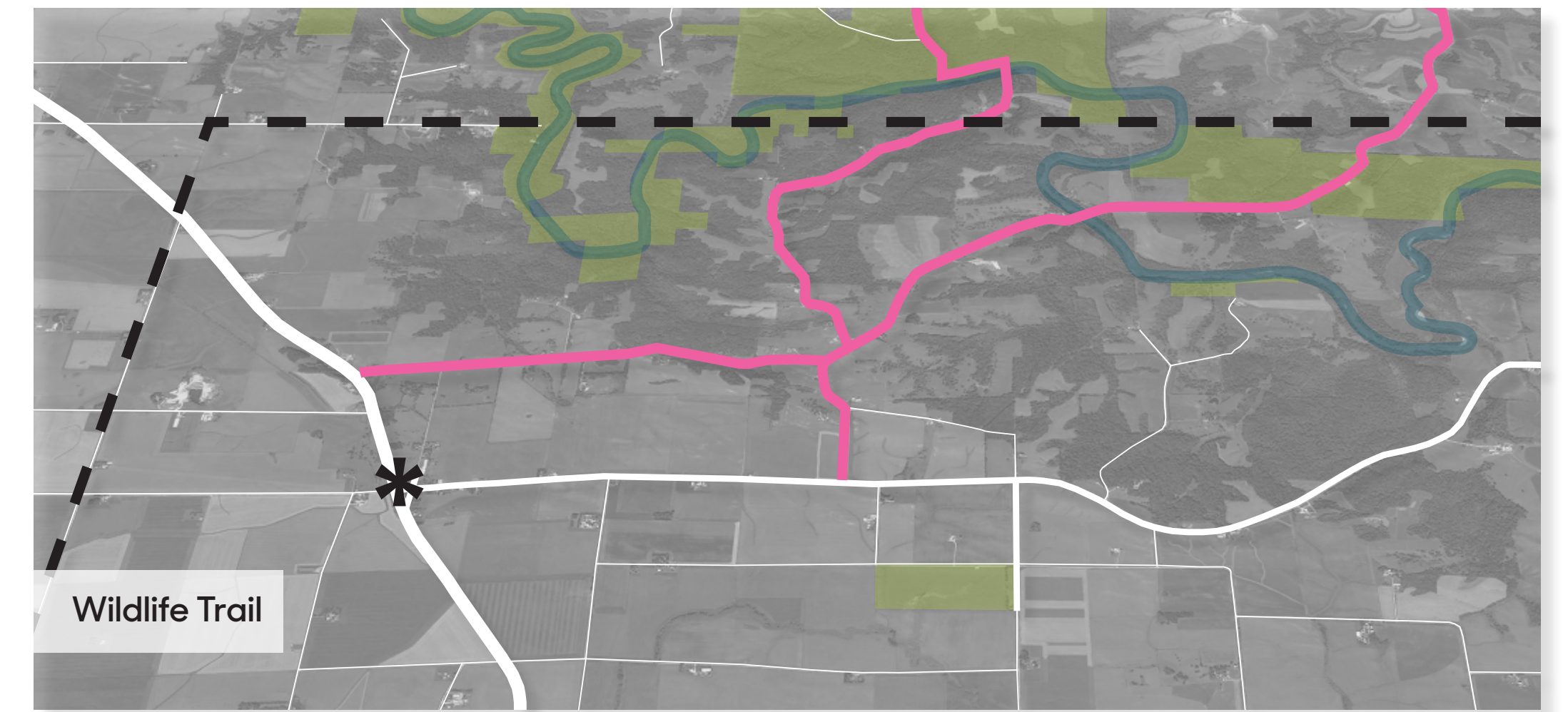
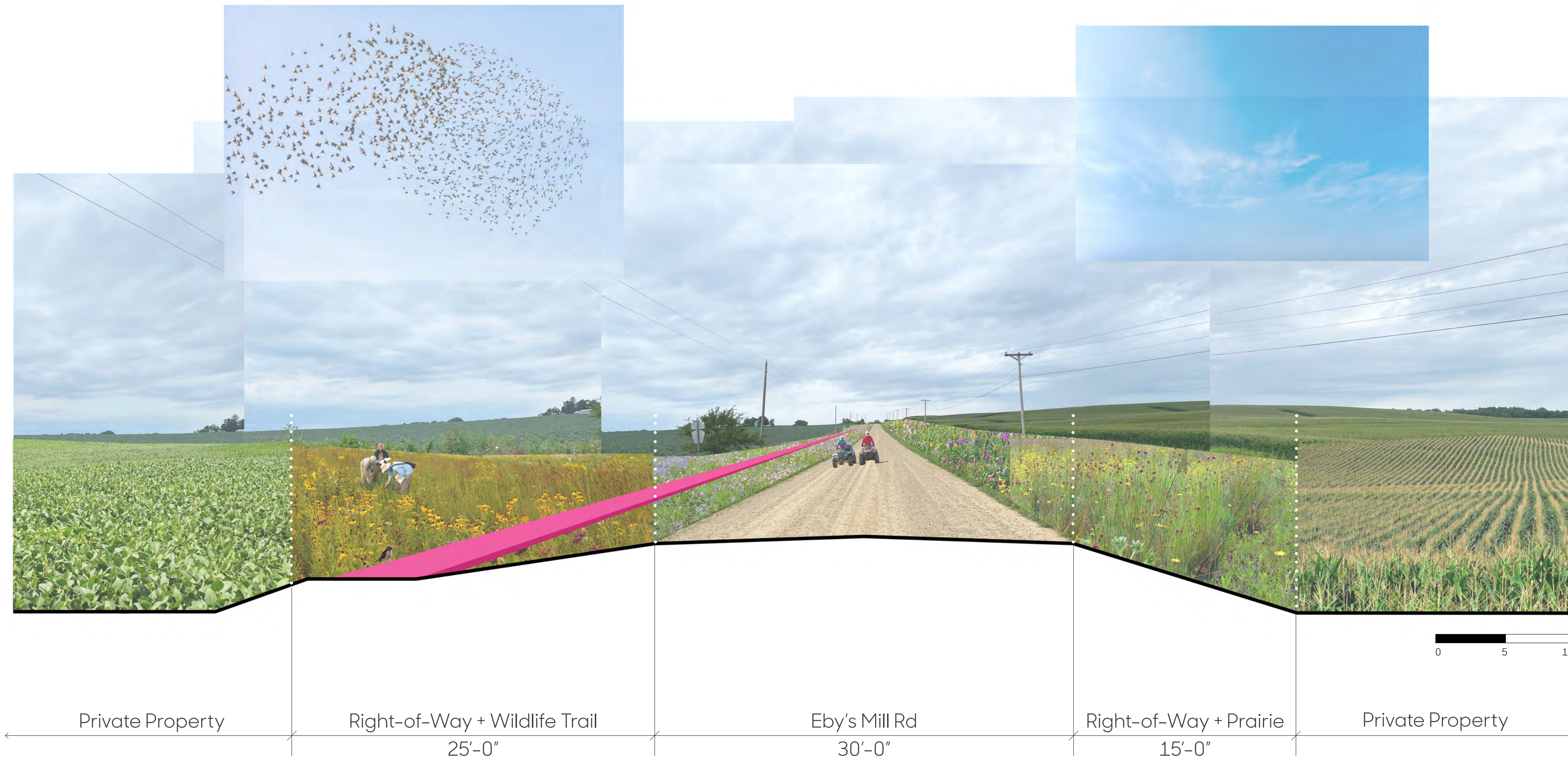
S.LA\ Seelman Landscape Architecture

Landscape Architect: Brett Seelman, PLA, ASLA
Project Manager / Associate: Alex Priest
Landscape Architecture Intern: Lexi Banks

Iowa State University | Trees Forever | Iowa Department of Transportation



Trail Type 5: Wildlife Trail
Total Proposed Distance: 12+ Miles



Scotch Grove is adjacent to 2,250+ acres of managed natural areas at Pictured Rocks State Park and Eby's Mill, Indian Bluffs, Leifker, and Rose Wildlife Areas. The Wildlife Trail is more than 12 miles of paved trails in the rights-of-way of Eby's Mill Road and Dales Ford Road. The eight-foot-wide trail, and surrounding restored prairie ecosystem along the roadways wind through the Maquoketa River Valley and place the iconic "Grant Wood landscape" in full view. The trail starts at a connection with either the Scotch Grove Prairie Trail, Jones County Great Trail, or Harvest Trail and converges north of the township near Cascade, providing an opportunity to connect with Dubuque. Taken as a loop or individually, the Wildlife Trail brings to the forefront the naturalistic and historical attributes of the Scotch Grove Township.

Scotch Grove
Regional Trail Connections

S.LA\ Seelman Landscape Architecture

Landscape Architect: Brett Seelman, PLA, ASLA
Project Manager / Associate: Alex Priest
Landscape Architecture Intern: Lexi Banks

Iowa State University | Trees Forever | Iowa Department of Transportation

