

## Overview

Understanding transportation is key for sustainable planning at both the village and township scale. The township's main transportation system consists of paved and gravel roads maintained by Jones County and the Iowa Department of Transportation. Camp Courageous and Pictured Rocks County Park are key destinations attracting 100,000+ visitors and large amounts of traffic annually. The Scotch Grove Antique Fair and Flea Market drawing 1,000+ visitors three times a year. Additionally, programming at The Grove Bar and Grill brings multi-modal traffic weekly. County Road E23/"Ridge Road" is an asset to many. Eby's Mill Road and Dales Ford Road were also discussed as scenic roadways with expansive views of the landscape and Maquoketa River.

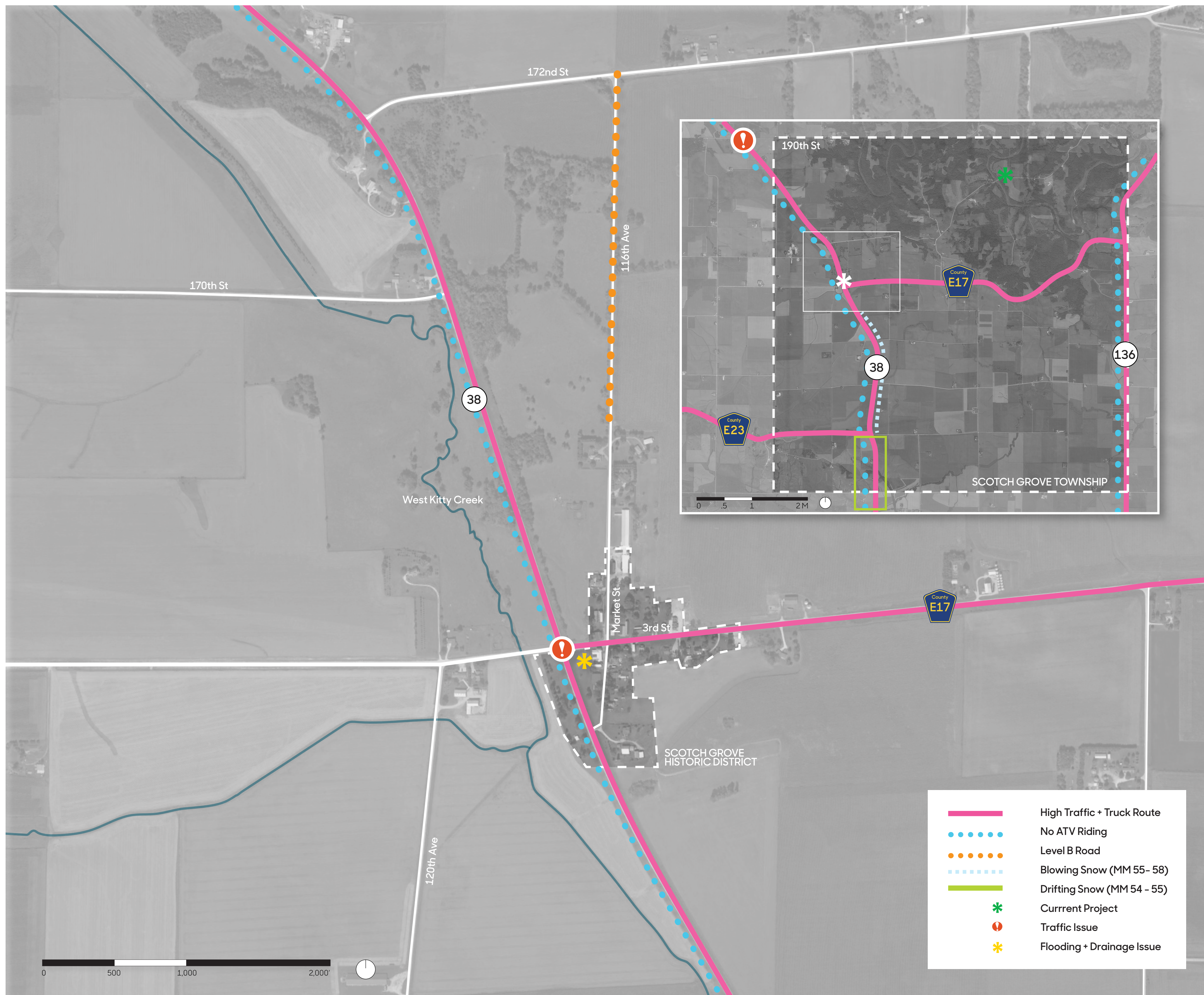
Transportation issues along State Highway 38 include the intersections at 190th Street and County Road E17. Without sidewalks and crosswalks, pedestrians walk along the highway, county, and village roads but feel unsafe because of the heavy high-speed traffic. Due to current parking constraints, pedestrians cross Highway 38 with oncoming high-speed traffic. Focus-group participants suggested a pedestrian underpass along Highway 38. Large numbers of ATV and UTV riders take "back roads" and have issues with parking because of their inability to take most state roads.

When it comes to weather, blowing snow has become an issue between mile markers 55 and 58, and snow drifting between mile markers 54 and 55. Ponding also occurs after heavy rains on the southeast side of the Highway 38 and County Road E17 intersection, the former path of West Kitty Creek.

A primary transportation-related goal for Scotch Grove is a trail connecting popular township destinations with larger connections to more than 2,250 acres of managed natural areas at Indian Bluffs, Edy's Mill, Rose and Leifker Wildlife Areas; and to nearby Monticello, Anamosa, and beyond to Cedar Rapids and Dubuque. Focus-group participants suggested using the rights-of-way along specific roadways for safer bike and pedestrian travel.

As of 01 July 2022, the IDOT code HF 21.30 states ATV/UTV vehicles can be driven on:

- "undivided two-lane primary highway (not interstate) on the most direct route between an ATV park/trail, secondary road where authorized, city street where authorized, and the operator's residence;
- any secondary road that is unpaved;
- any secondary road that is paved and undivided on the most direct route between an ATV park/trail, secondary road where authorized, city street where authorized, and the operator's residence;
- paved, undivided secondary road as authorized by the board of supervisors;
- directly across a highway that is not an interstate at an unobstructed intersection after stopping and yielding to oncoming traffic."



# Scotch Grove Transportation Inventory

## S.LA\ Seelman Landscape Architecture

Landscape Architect: Brett Seelman, PLA, ASLA  
 Project Manager / Associate: Alex Priest  
 Landscape Architecture Intern: Lexi Banks

Iowa State University | Trees Forever | Iowa Department of Transportation

