

Vicinity Map (no scale)



Bird's-eye view of proposed enhancements

The English River offers ample recreational opportunities for Riverside residents and regional ecotourists alike. However, residents find the existing river access at the south end of Hall Park to be inaccessible because of the absence of a sidewalk and parking. In addition, the boat ramp is obscured from both park users and vehicular passersby on Riverside Road by overgrown vegetation.

The design proposal addresses accessibility issues with the addition of a paved drive, walkway, and parking. Removing excess vegetation makes the area both easier to find and more attractive. Other amenities proposed include terraced seating, which creates opportunities for people watching while controlling erosion; shade trees; an interactive water play area; and a universally accessible pavilion with picnic tables. The pavilion takes the shape of the USS Enterprise starship, paying homage to Riverside being the future birthplace of Captain James T. Kirk from the TV series *Star Trek*.

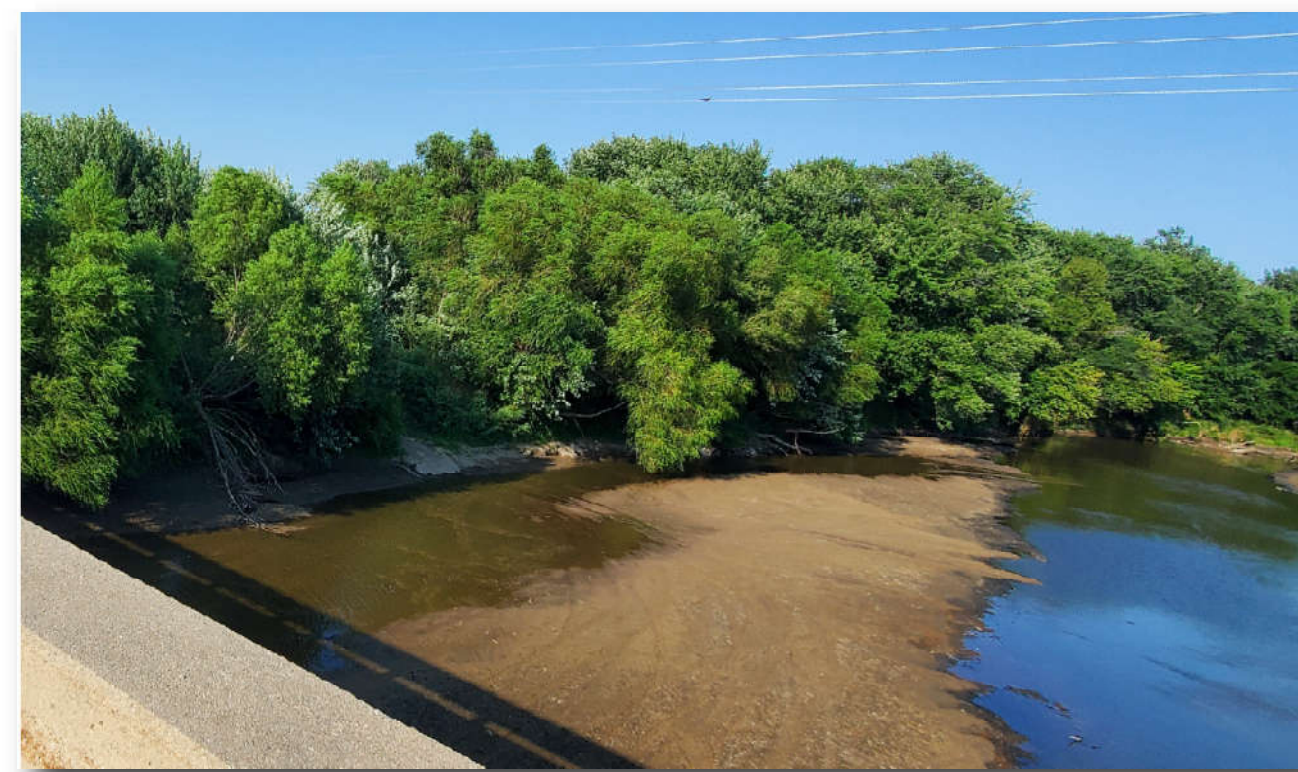


View of interactive water play area from river level



Older Adults

"[The river access area] definitely could be improved upon I feel like. There could be a shelter and there could be a sidewalk or a trail that you could drive down, park, watch the river."



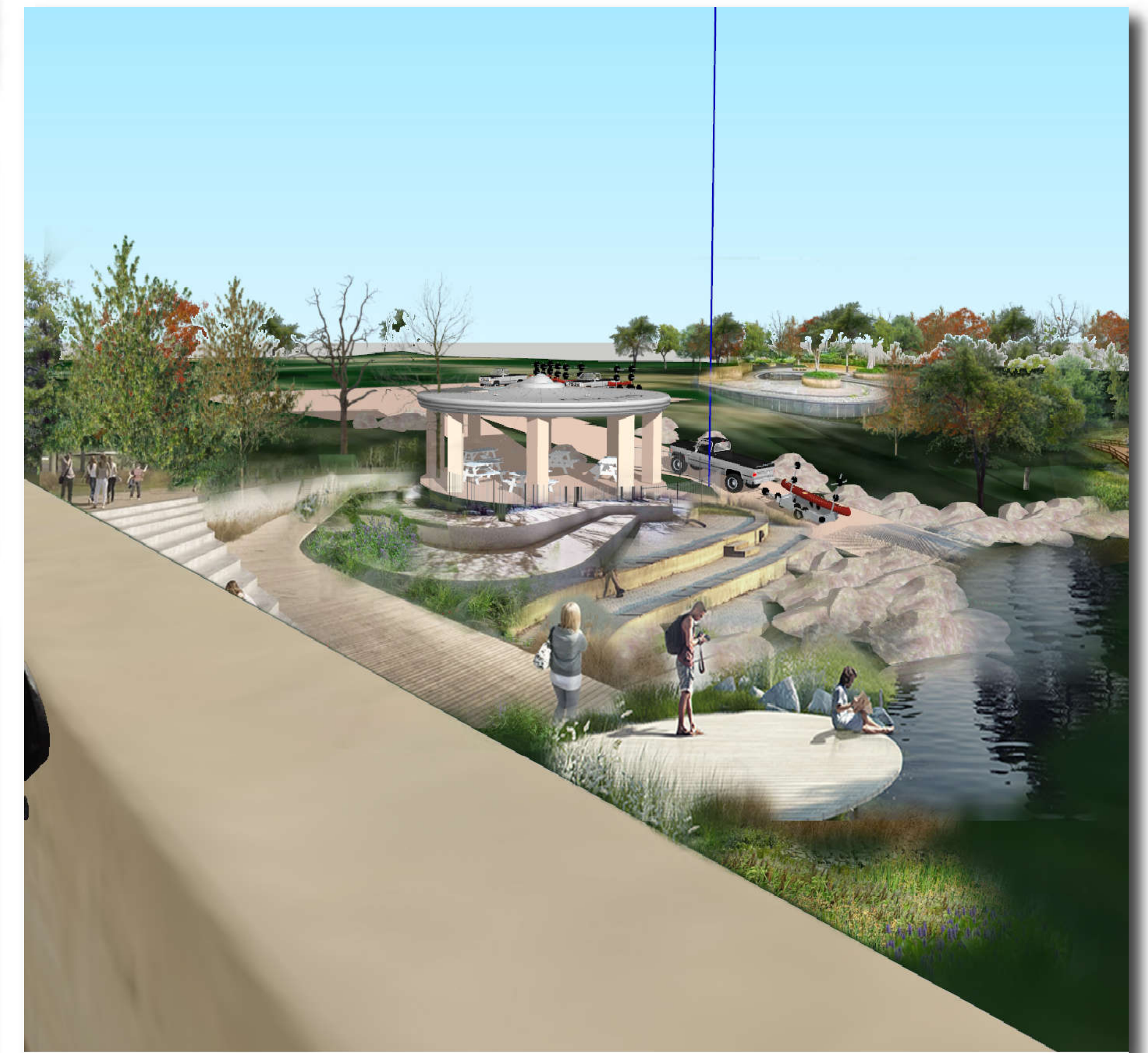
Existing boat ramp facing east from Riverside Road bridge



View of proposed enhancements from top of boat ramp (facing south)



Existing boat ramp facing south from top of boat ramp



View of proposed enhancements from Riverside Road bridge looking east

Riverside

English River Access

Martin Gardner Architecture

Designer: Kyle Martin, Landscape Architect: Meg Flenker

Intern: Zahra Salahshoor

Iowa State University | Trees Forever | Iowa Department of Transportation

