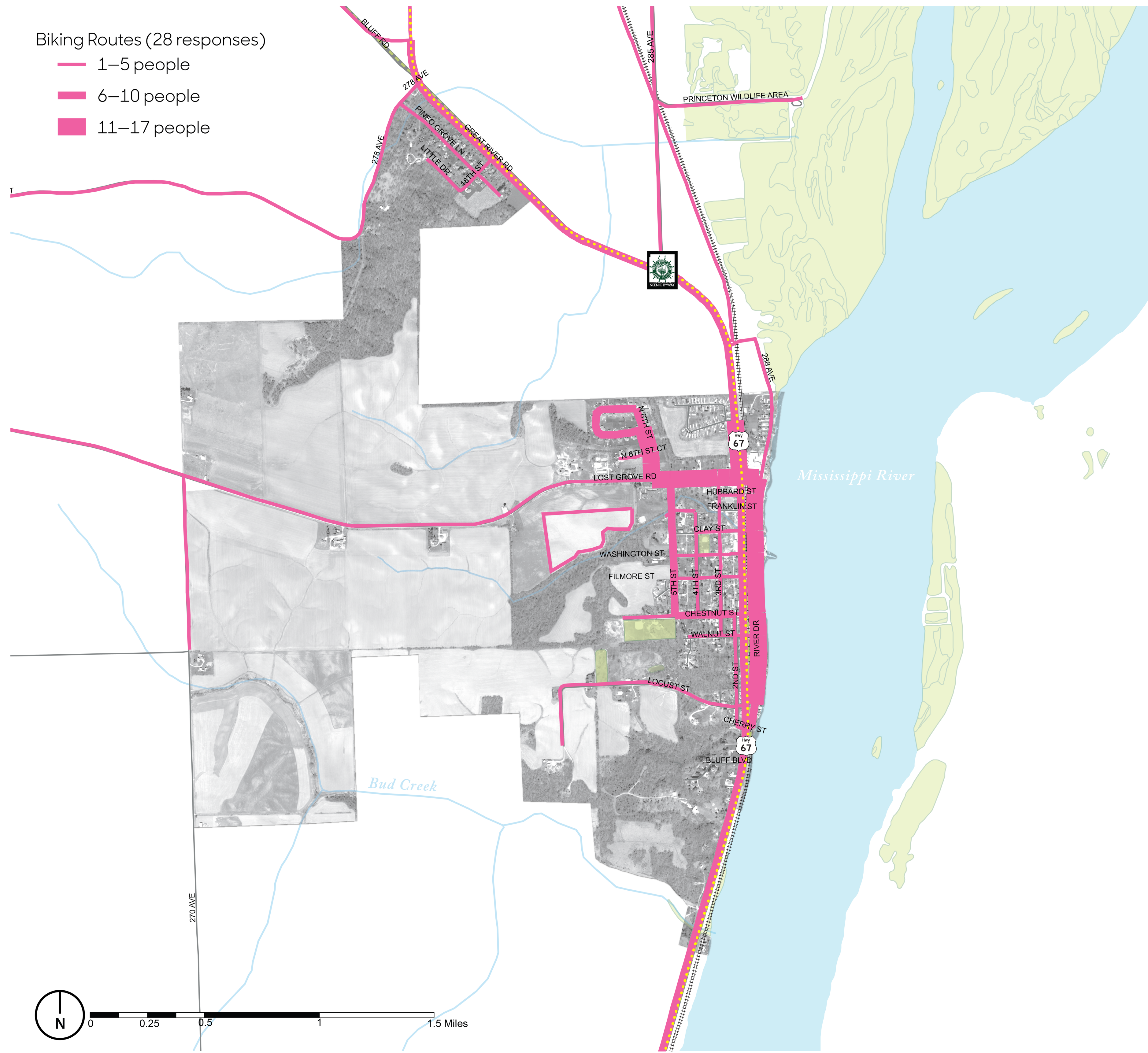


Biking Routes (28 responses)

- 1–5 people
- 6–10 people
- 11–17 people



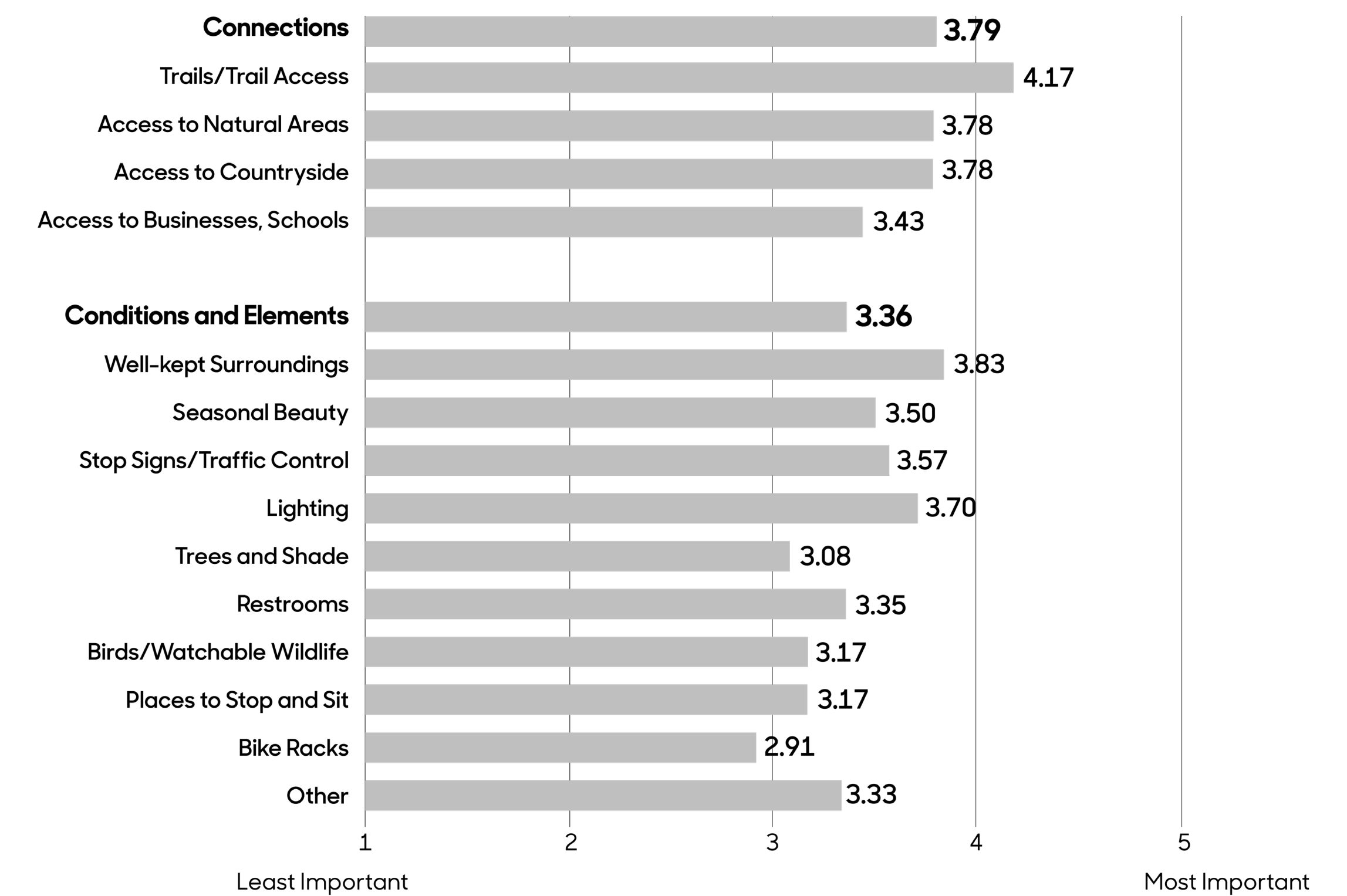
Map Source: Iowa Department of Natural Resources, "Natural Resources Geographic Information Systems Library," <http://www.igsb.uiowa.edu/nrgislib/>.

Where They Bike

This map shows the biking routes identified by 28 survey respondents. The frequency that the routes are used is depicted by their width, with most frequently used routes being the thickest. Like walkers, cyclists most frequently ride on River Drive, as well as portions of Lost Grove Road and North 6th Street and in Lost Grove Acres. All city streets are used by bikers to some extent. People also often bike along Highway 67, both to the north and south of town. Bikers also go to the Princeton Wildlife Management Area, and west out of town on Lost Grove Road and 278th Avenue.

Why They Go That Way

On a scale of 1 to 5, with 5 being the most important, survey participants ranked the characteristics and features that made their biking experience better. These features are categorized as either "connections" or "conditions and elements." Among Princeton participants, connections are more important than conditions/elements, with mean values of 3.79 and 3.36, respectively. In terms of connections, access to trails is most important with a mean value of 4.17. In terms of conditions and elements, well-kept surroundings are the most important (3.83), followed by lighting (3.70). Stop signs/traffic control (3.57) and seasonal beauty (3.50) are also significant features to cyclists.



Princeton Preferred Biking Routes

Transportation Behavior and Needs Survey

Julia Badenhope, Sandra Oberbroeckling, Chad Hunter

Iowa State University | Trees Forever | Iowa Department of Transportation

