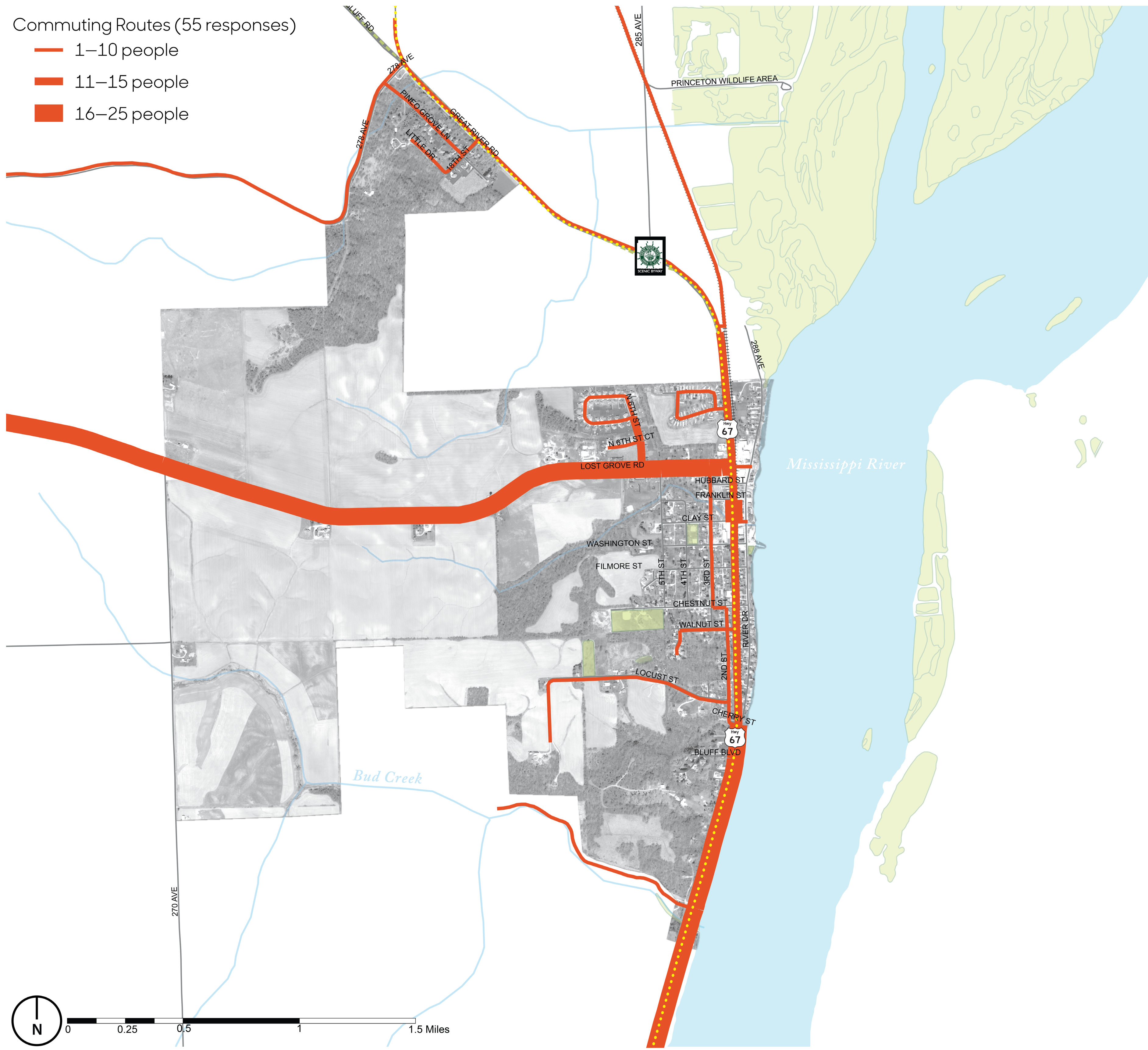


Commuting Routes (55 responses)

- 1–10 people
- 11–15 people
- 16–25 people



Map Source: Iowa Department of Natural Resources, "Natural Resources Geographic Information Systems Library," <http://www.igsb.uiowa.edu/nrgislib/>.

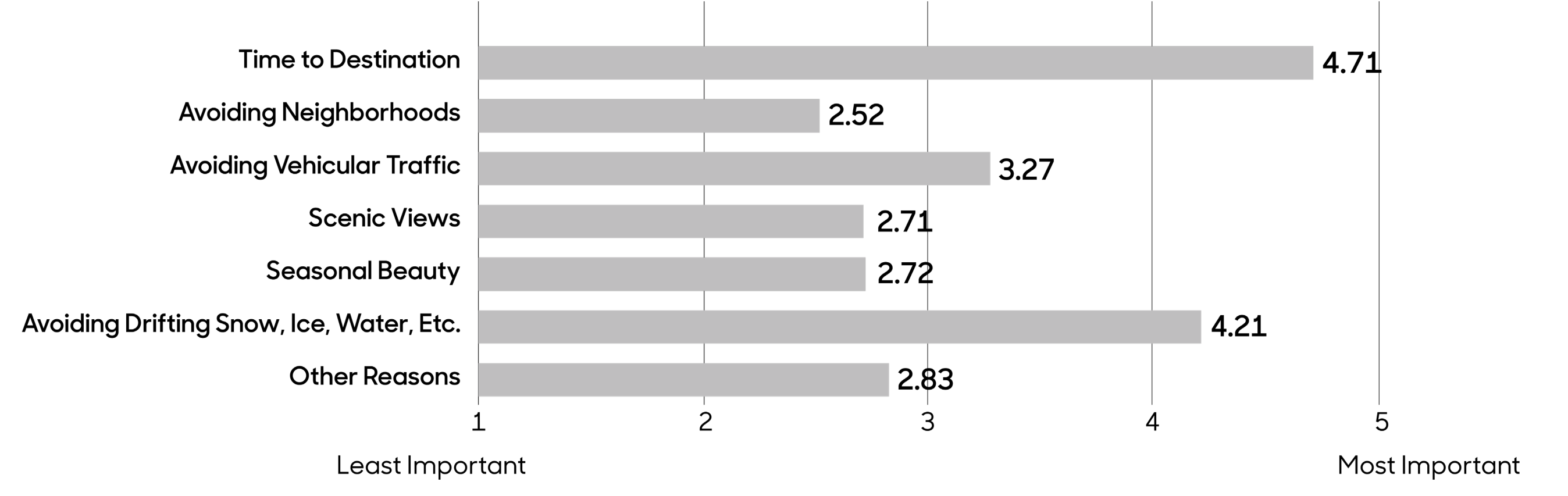
How They Get There

This map shows the commuting routes identified by 55 survey respondents. The frequency that the routes are used is depicted by their width, with most frequently used routes being the thickest. The primary north-south commuting corridor in Princeton is Highway 67, particularly south of Cherry Street. Lost Grove Road is the main east-west corridor for commuters. Some people travel north on Highway 67 to 278th Avenue to go west out of town. Some commuters travel on 3rd, Chestnut, and 2nd Streets, perhaps to avoid Highway 67.

The circulation patterns that emerge when routes for biking, walking, and commuting are overlaid suggest suitable types of transportation enhancements. For example, where pedestrian and vehicular traffic intersect, such improvements could include creating better visibility, defining crossing points, or improving signage.

Why They Go That Way

On a scale of 1 to 5, with 5 being the most important, survey participants ranked the characteristics and features that factored into their choice of commuting route. Among Princeton participants, time to destinations is the most important factor, with a mean value of 4.71. Avoiding weather-related issues such as snow and ice (4.21) is the second most important factor determining commuting routes. Avoiding vehicular traffic is also considered important, with a mean value of 3.27. Scenic views, seasonal beauty, and avoiding neighborhoods are not critical factors in determining commuting routes.



Princeton Commuting Routes

Transportation Behavior and Needs Survey

Julia Badenhope, Sandra Oberbroeckling, Chad Hunter

Iowa State University | Trees Forever | Iowa Department of Transportation

