



MAIN STREET LAND USE



The west side of Main Street currently has multiple open lots with more to follow, as the old bank building is taken down. The remaining parcels will provide an open green space that could have a temporary life as a park like space. Future vision for this site would include the development of businesses, but open space could remain in key locations. The steering committee's goal for this site was to develop a landscape treatment that could be temporary or permanent to allow future structures to be built.



EXISTING CONDITIONS

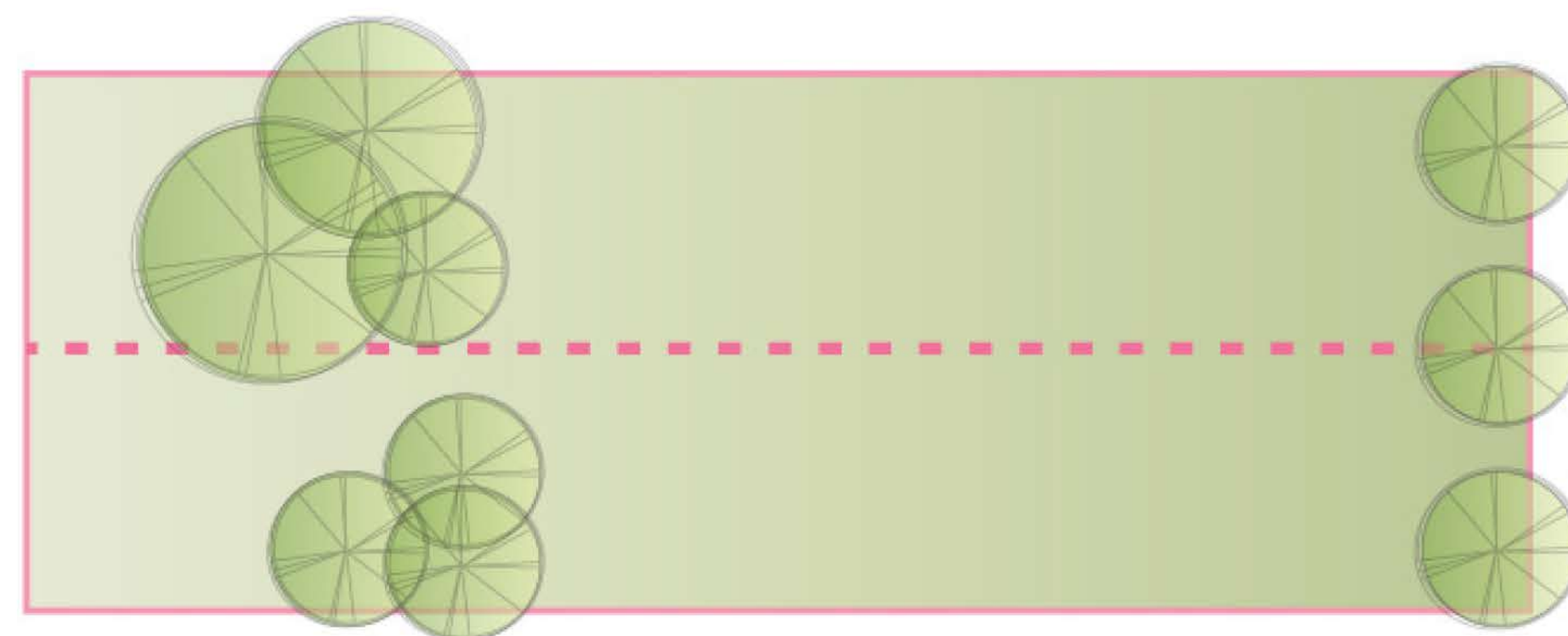


POTENTIAL RECONFIGURATION



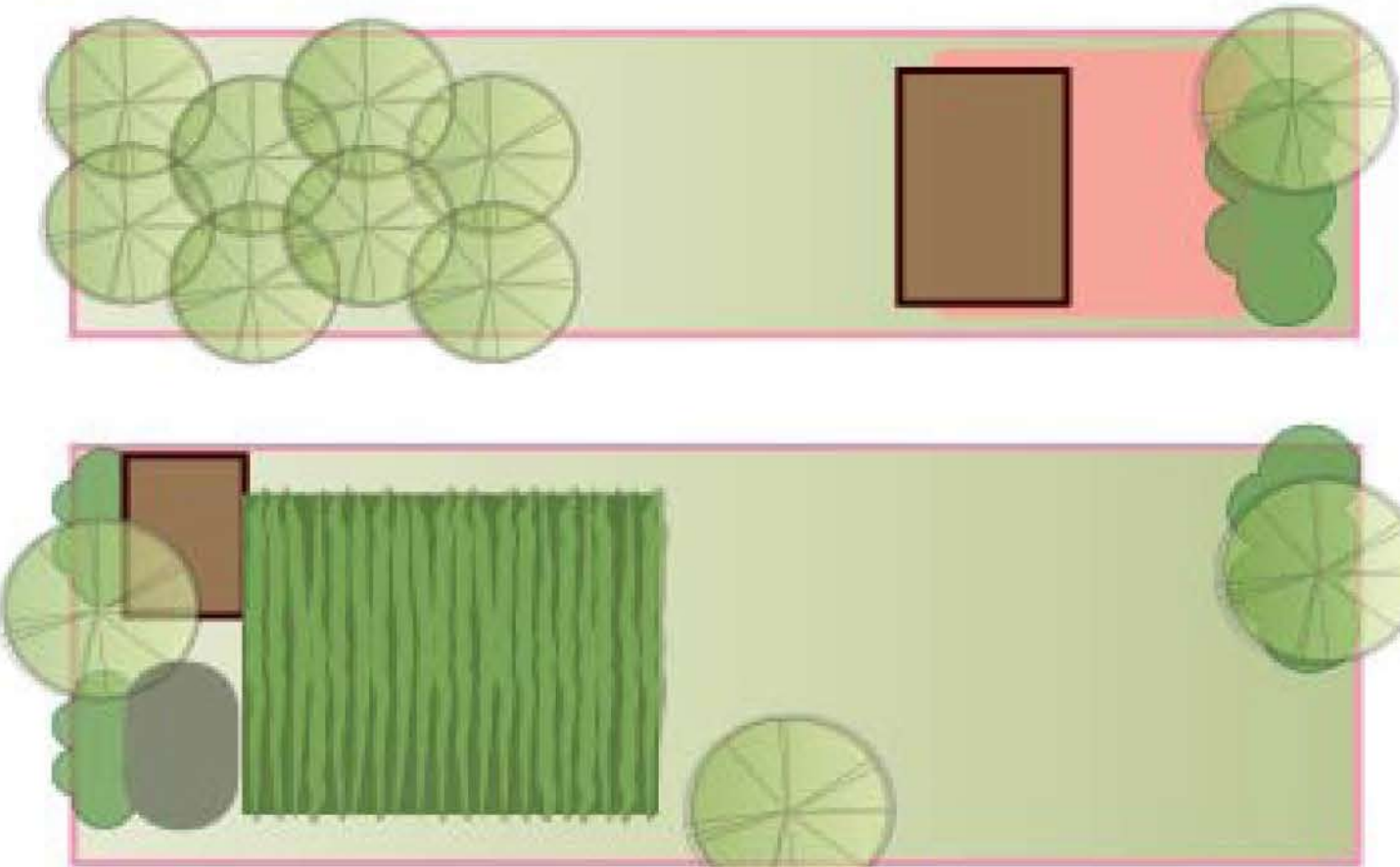
POTENTIAL RECONFIGURATION

The design for the main street park utilizes the parcel delineation to create multiple smaller parks that can work together as a larger system or as individual pocket green spaces that can stand on their own between structures. It is intended that the primary space on the corner become a civic building, such as a community center or fire station so that it becomes a permanent fixture of the downtown and community. The park space would utilize native plants to compliment the surrounding environment and attract birds and pollinators.



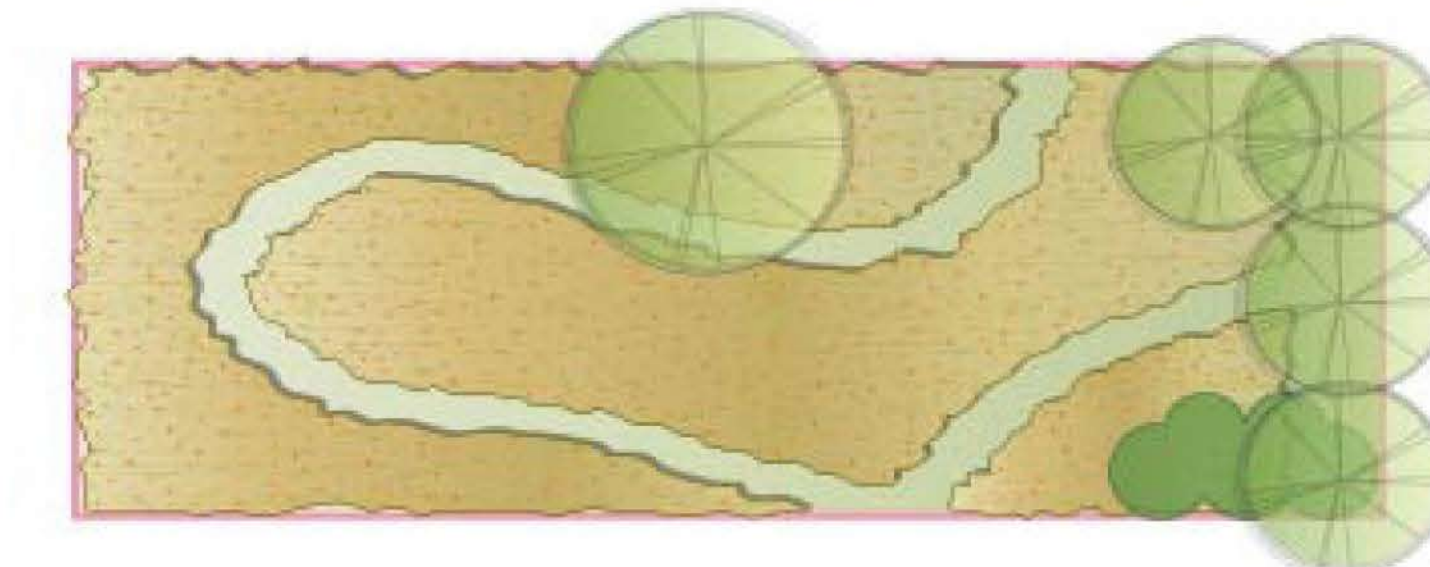
OPEN LAWN / EVENT SPACE

- Easy conversion for business development
- Currently being developed as an open space with a memorial sculpture
- Native trees and shrubs
- Potential for some earth mounds to delineate space and create fun terrain for kids to play on



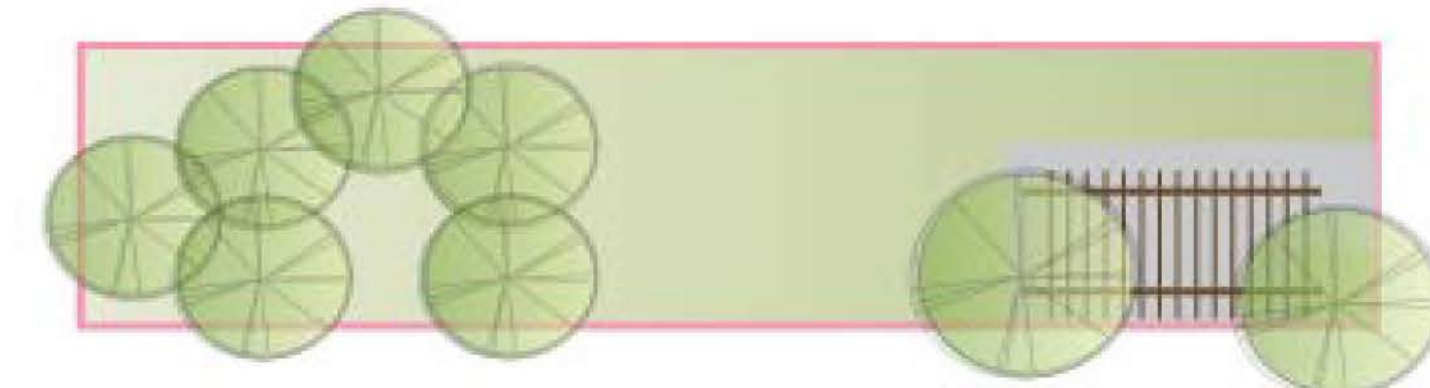
GARDENS, EDIBLE LANDSCAPE & COMMUNITY SHELTER

- This city-owned location would be a permanent open space
- Non-messy edible plants for human or bird consumption
- Perennial plantings to increase aesthetic of Main Street



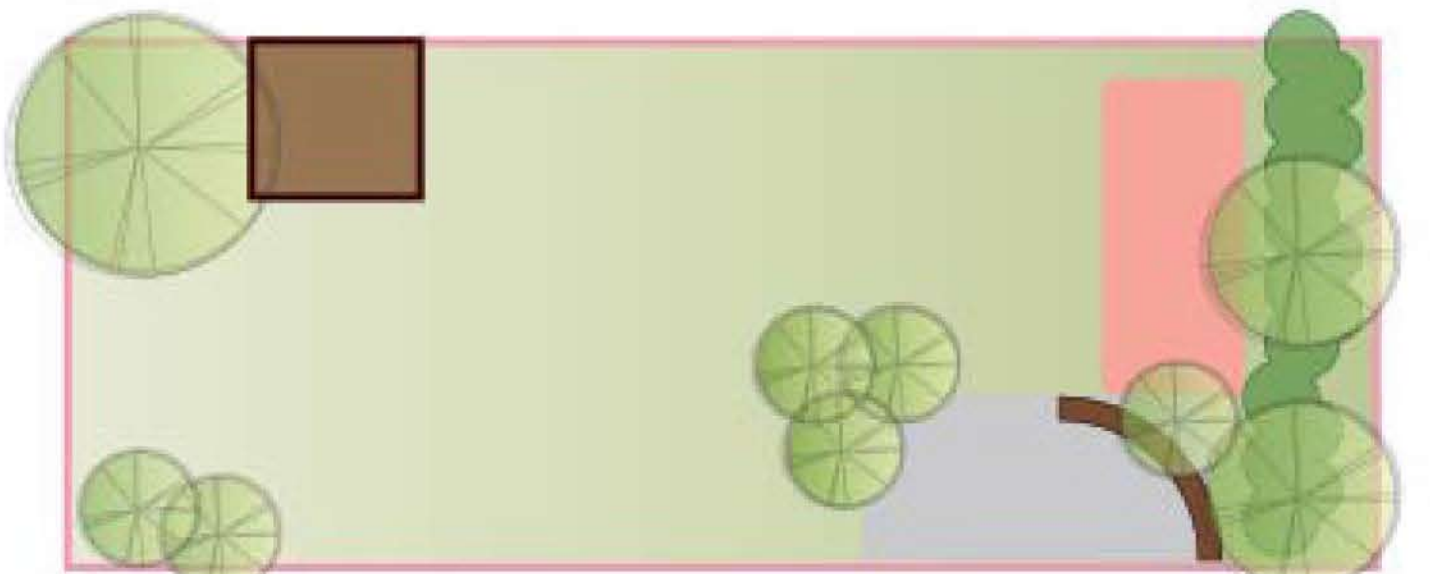
MEADOW

- Minimal cost in development, maintenance or removal
- Easy conversion for business development
- Pollinator habitat will increase viability of gardens and attract native birds and



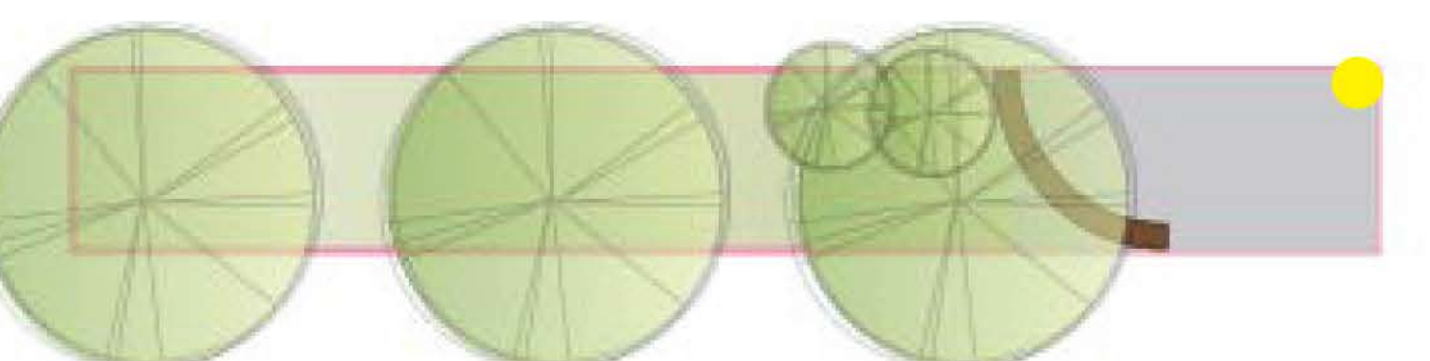
GROVE & SHELTER

- New location for bus stop
- Design for shelter to be incorporated into potential civic building
- Native trees and shrubs



PLAZA GARDENS & TOWER

- Perennial plantings to increase aesthetic of Main Street and tie into design of potential civic structure
- Tower to offer higher vantage point to view the surrounding landscape and attract people to downtown
- Rounded bench could take on nest aesthetic and relate to community slogan



VEGETATED EDGE

- Maintained as streetscape element to strengthen street wall
- Sculpture to mark corner and entrance into park/plaza