

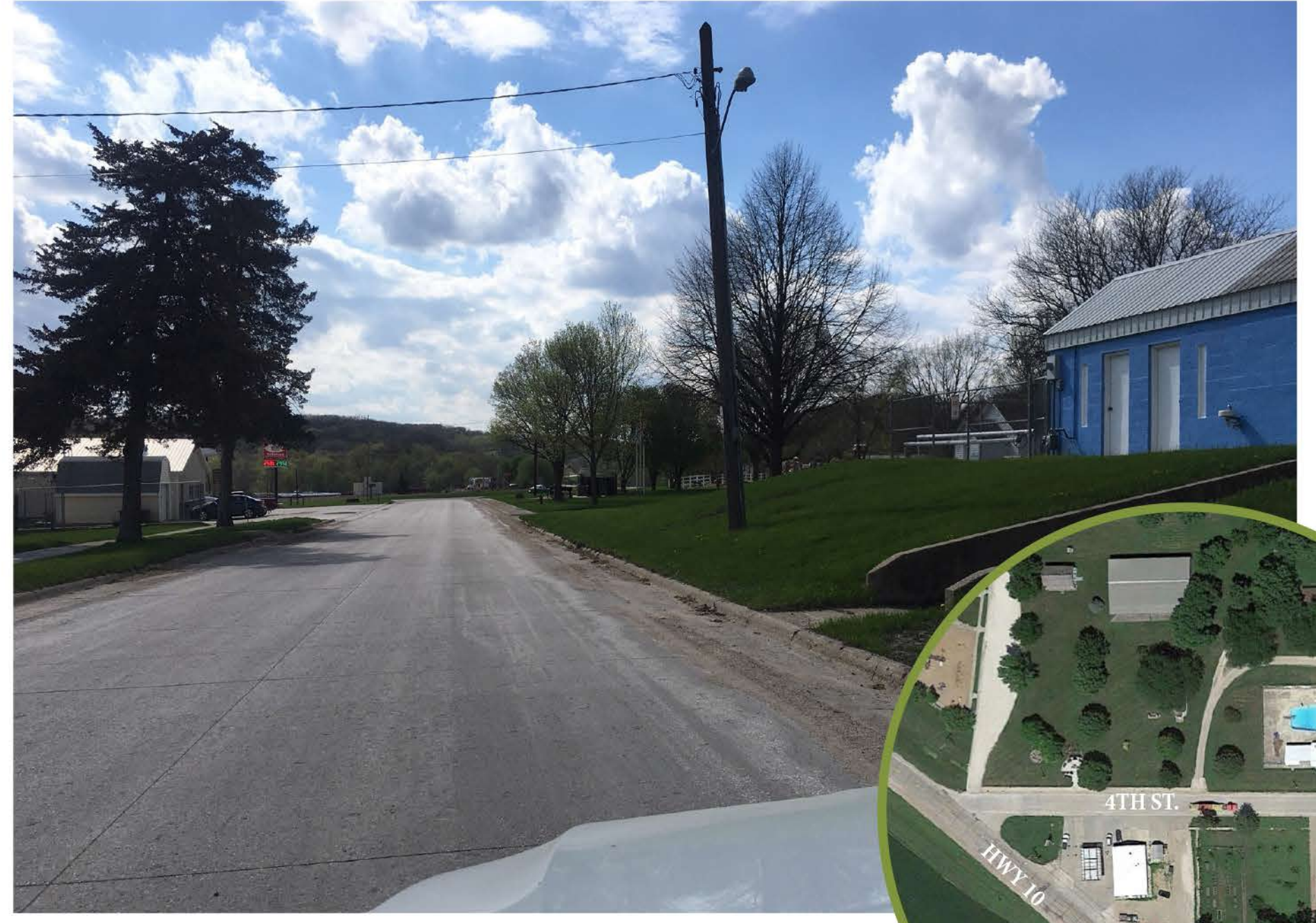
INTERSECTIONS & CROSSINGS

HWY 10 & MAIN STREET



- Bus stop at this location with many kids crossing the busy highway
- Highway traffic, including large truck, traveling at fast speeds
- Intersection coincides with a corner with low visibility
- Main Street is wide with minimal vertical edge to the street to create an awareness of a more pedestrian district

W4TH STREET (M27) Near Pool



- Children crossing at multiple points along the road
- Limited sidewalks and no marked crossings
- Higher volumes of traffic due to park activities and the gas station

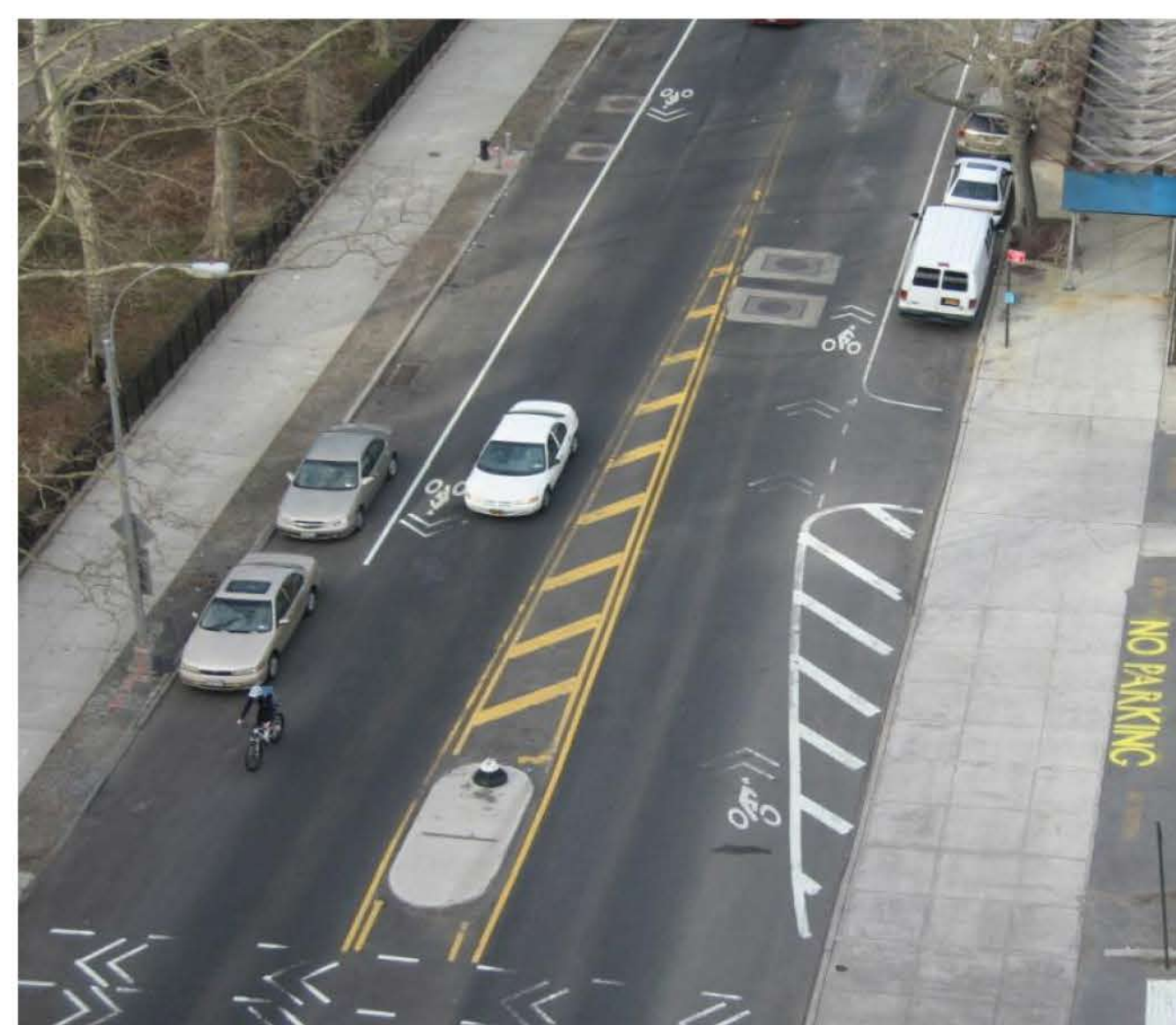
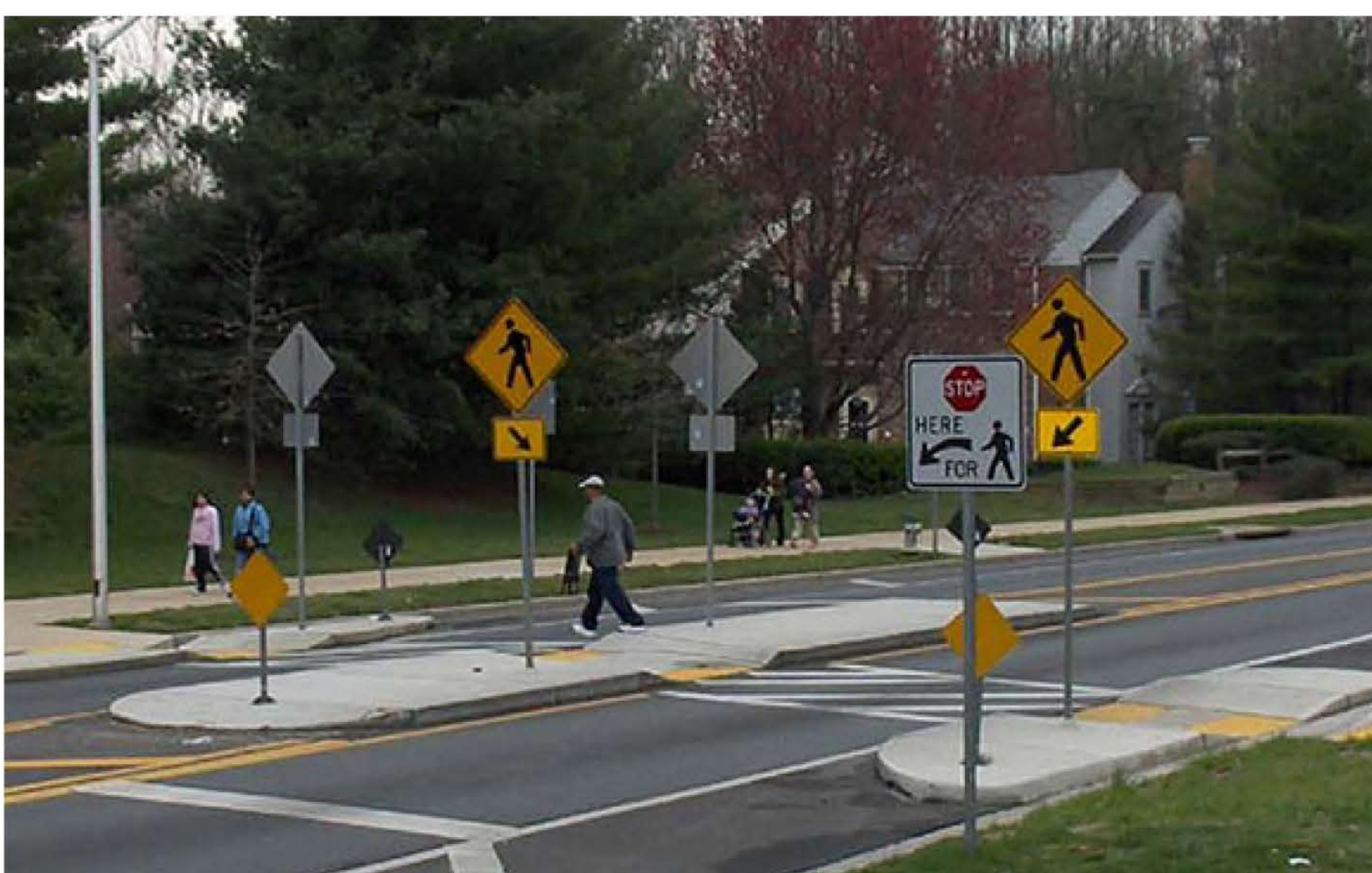
STANDARD CROSSWALK STYLES



BENEFITS

- Bring attention to the intersection
- Make drivers aware of the potential for pedestrians
- Provide a designated space for crossing
- To be successful they should be utilized in conjunction with other safety features (i.e. curb extensions and signage)
- Bold and unique designs emphasize pedestrian importance
- Artful crosswalks can be utilized to strengthen the identity for a particular street, neighborhood or community.

ARTFUL CROSSWALKS



MEDIANS

- Bring greater attention to the crossing
- Reduce the lane widths which makes drivers more aware of the road and their speed
- Provides a zone for pedestrians to stop when crossing
- Can be painted, raised and even planted