



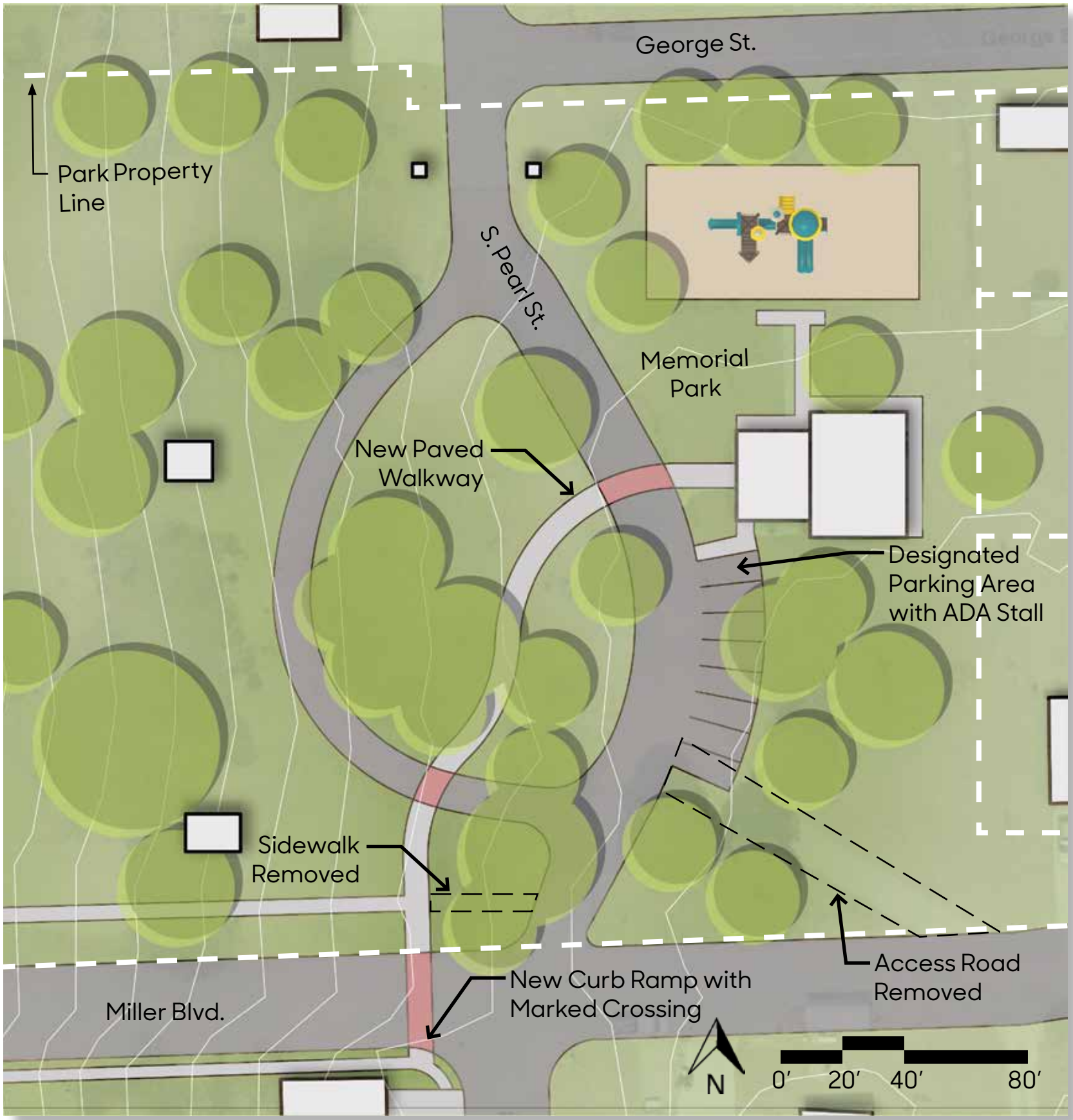
Perspective showing Main Street Park ADA improvements.

Main Street Park

Main Street Park is centrally located in town along Main Street and has several recently upgraded amenities including a large shelter, playground, and basketball court surfacing. During the design charrette meeting, members of the community noted that there is limited ADA access to the shelter. The proposed design aims to provide more substantial ADA access with designated signage, pavement markings, and additional paved areas.

Midway Park

Several community members noted the recent efforts of high school students working to improve a county park north of town. The design team incorporated the students' vision for recreation at Midway Park into a spatial landscape plan that includes a swimming area, and an outdoor classroom.

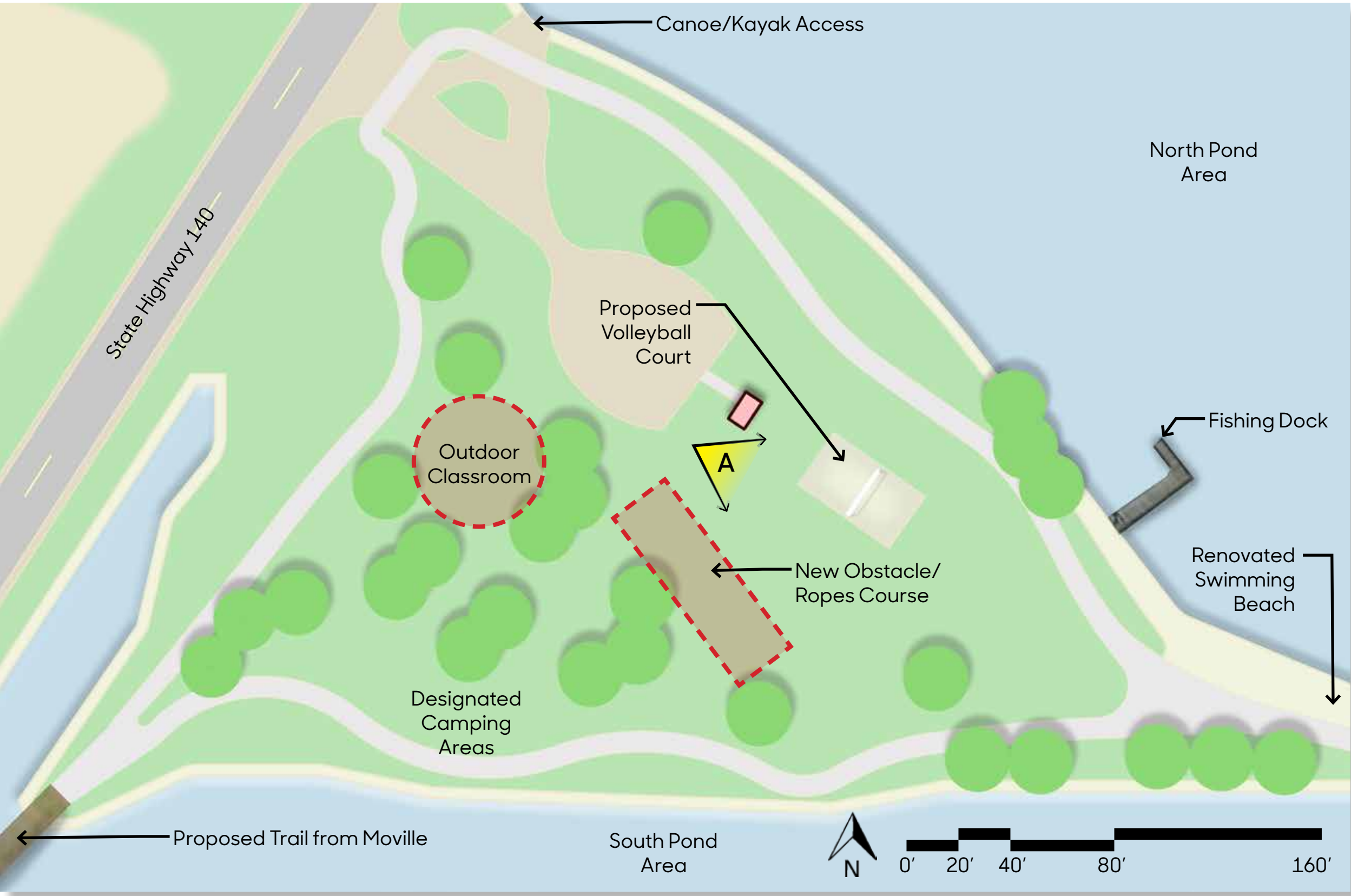


Plan highlighting an assortment of pedestrian safety improvements at Memorial Park.

Memorial Park

Memorial Park is located on the south side of town just east of Haskell Pool. Memorial Park offers a community gathering shelter, a playground, and some open space.

Moville community members noted that Memorial Park has safety concerns because of the various vehicular roadways penetrating the park. Pearl Street is the major roadway that divides the park and there is a smaller access road to the southeast that adds more opportunity for pedestrian conflict. The design plan calls for the removal of the southeastern access road and the addition of a designated pedestrian walkway. Improved ADA accessibility is also desired throughout the park area.



Midway Park plan with proposed trail connection, beach, and recreation areas.



Historic photo of swimming at Midway Park.



Example of an outdoor classroom.



Fishing line disposal unit.



Example of an obstacle course.



Camping is desired at Midway Park.



Perspective A showing the proposed improvements at Midway Park.