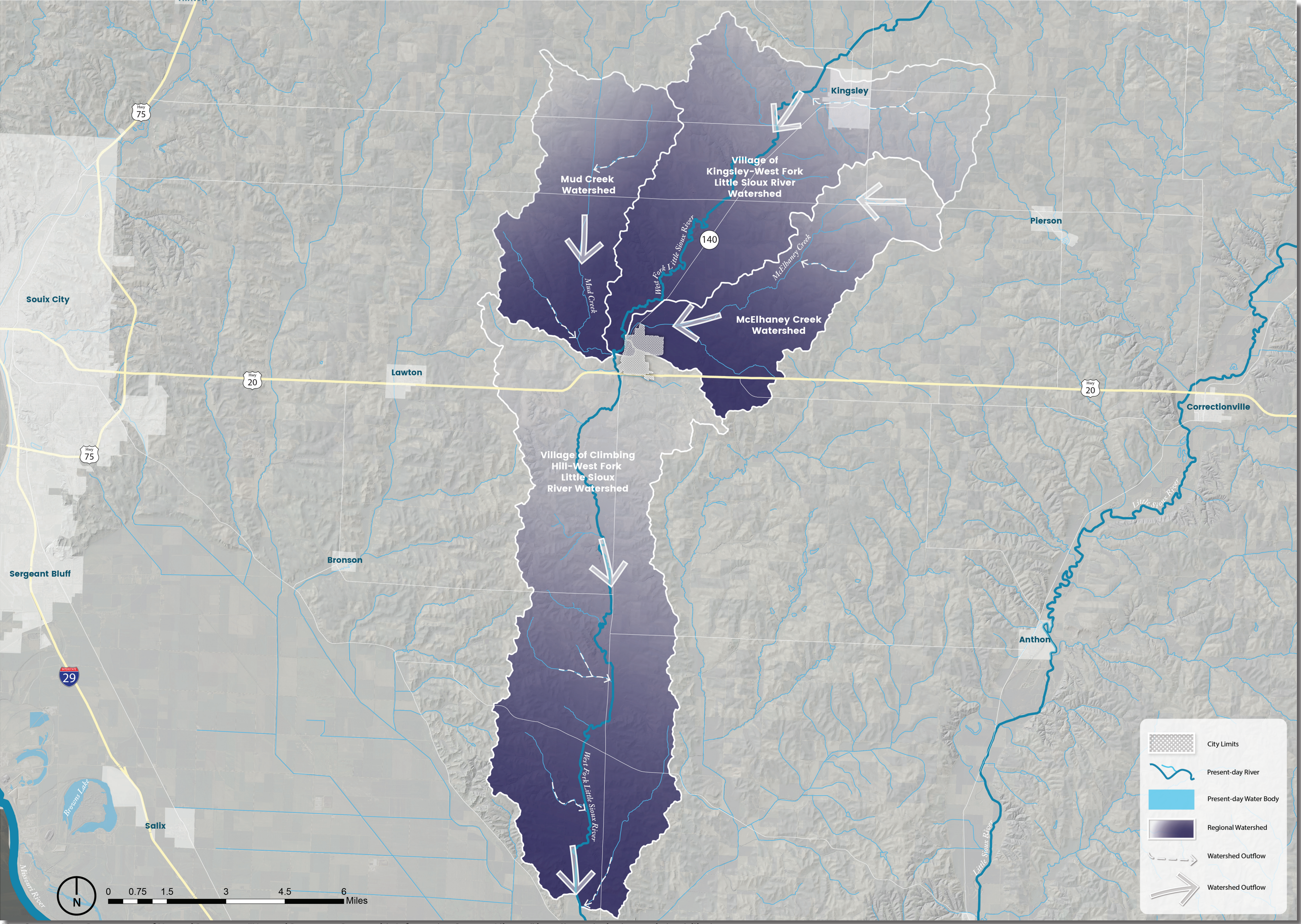


Regional Watershed

A watershed is a defined area or ridge of land with a boundary that separates waters flowing to different rivers, creeks, or basins. Watershed boundaries show the extent of a drainage area flowing to a single outlet point, and determines whether precipitation is directed into one watershed or an adjacent watershed.

It is important to note that there are multiple levels of watersheds, for instance the Iowa River watershed is composed of a dozen smaller watersheds, and the Iowa River watershed is a sub-basin of the Mississippi River watershed.

Where a community is located in relation to its surrounding watershed(s) determines its capacity to manage regional watershed issues such as flooding. For example, a community located near the end of a watershed (close to the outlet point) will have little capacity to reduce the amount of water draining toward it from upland areas.



Map Source: Iowa Department of Natural Resources, "Natural Resources Geographic Information Systems Library," <http://www.igsb.uiowa.edu/nrgislib/>.



Regional Watershed

Bioregional Context

Julia Badenhope, Casey Cox, Riley Dunn, Dominick Florer, Hatvany Gomez-Concepcion, Ngoc Ho, Henry Herman, Alysse Kirkman, Giannis Koutsou, Emma Lorenz, Zoey Mauck, Carol Ustine
Iowa State University | Trees Forever | Iowa Department of Transportation

