

+ LIKES

Heart of Town

"It is in the heart of our downtown and it is visible to a lot of traffic/people."
 "This area of town shows the 'small-town' vibes Mount Pleasant has."
 "Center of the downtown area."

Town-Gown Link

"Has character and draws on downtown and campus."
 "Helps tie the University into the community..."

Beautiful/Historic

"I think these two residential streets are two of the prettiest in town..."
 "Like the trees, big older homes."
 "...opportunities for showcasing the historic and cultural heritage of Mount Pleasant."

- DISLIKES

Inaccessible

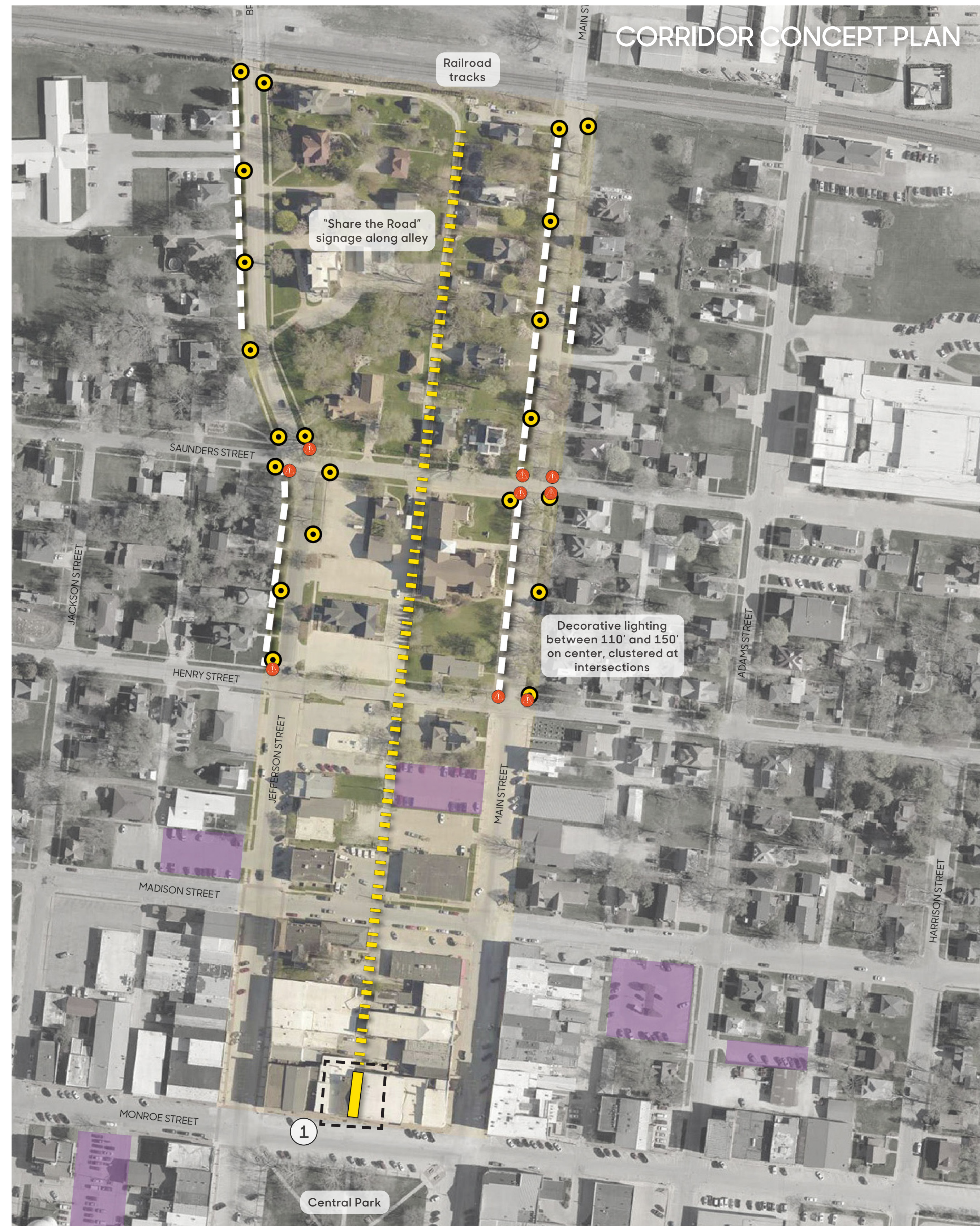
"Lack of ADA access and sidewalks that are in a little rough shape."
 "Sidewalks gather mud and ice..."
 "The sidewalks are not friendly to ride a bike or push a stroller on."

Security Concerns

"I wouldn't want to walk in the alley... Too many places for criminals to hide."
 "'Run down, seedy and not representative of how we want MP to be seen."
 "Add lighting so it's not a dark sketchy place at night."

Run Down

"Starting to decline due to age."
 "Sidewalks and streets are torn up and not easy for driving/biking."
 "Broken sidewalks. Lack of appeal to walk down alley ways."



Pedestrian Network

Community Visioning survey respondents and high school focus group participants ranked sidewalk quality and lighting among their top priorities (see boards 3c, 4e). Neighborhood streetscape improvements and pedestrian routes to school, work, and the downtown district were also requested (see boards 3a, 4c). The proposed plan provides a model for pedestrian networks to/from downtown. Sidewalks are improved – repaved to 5' width and adorned with stamped concrete striping – curb ramps are upgraded to adhere to ADA standards, ornamental lighting is installed, and an alley becomes a shared use corridor, terminating in a pedestrian-only art space.

Primary goals of pedestrian network improvements include:

- Establish a functional, safe pedestrian network that links campus with downtown, with access to public parking and adjacent neighborhoods
- Selectively upgrade sidewalks, targeting portions with heavy use, evident mud/ice issues, and conditions that limit accessibility or fail to adhere to ADA standards
- Install ornamental lighting with banners to improve night use and feeling of security, while strengthening Mount Pleasant's sense of community through cohesive site elements
- Experiment with alternative pedestrian infrastructure - in this case, an alley. If pedestrians choose to use the alley over improved sidewalks, consider integrating additional alleys into the town pedestrian network
- Create an iconic pedestrian space, Art Alley, that strengthens Mount Pleasant's brand, supports walkability, and heightens awareness of local pedestrian networks as well as local art

Online Survey Results

The downtown to campus corridor was ranked the #1 priority site for improvements out of six potential projects. Survey respondents listed perceived positives and negatives of the designated alley as well as the sidewalks along Jefferson and Main (left). They suggested the following:

Alley

- More color, vibrant color
- Entry archway/overhang
- Brick surfacing/details
- Lighting and cleanup for safety
- Rotating art/mural
- Cafe/events
- Planters, benches, litter receptacles
- Links to parking
- Maintain/highlight historic character of buildings

Sidewalks

- Update for ADA compliance
- Repave
- Widen to accommodate strollers and possibly bicycles
- Improve drainage – mud and ice issues
- Coordinate pedestrian routes and furnishings
- Add litter receptacles

Legend

- Upgrade ADA curb ramps
- Lighting with banners
- Public parking
- Sidewalk resurfacing w/ stamped concrete bands
- Shared route, signed/painted
- Pedestrian-only alley

