



"I feel Mt Pleasant has done a great job of adding trails!"

"Love it for walking, can go many places with different path with each walk."

"Nice, easy to use."

"I LOVE having the walking path!!!"

"That it connects the majority of town together."

"Paved and maintained. Well designed for the most part."

"Robust and growing. It is a great trail system and the community should be proud to have it."

"It's very accessible for me and well planned."

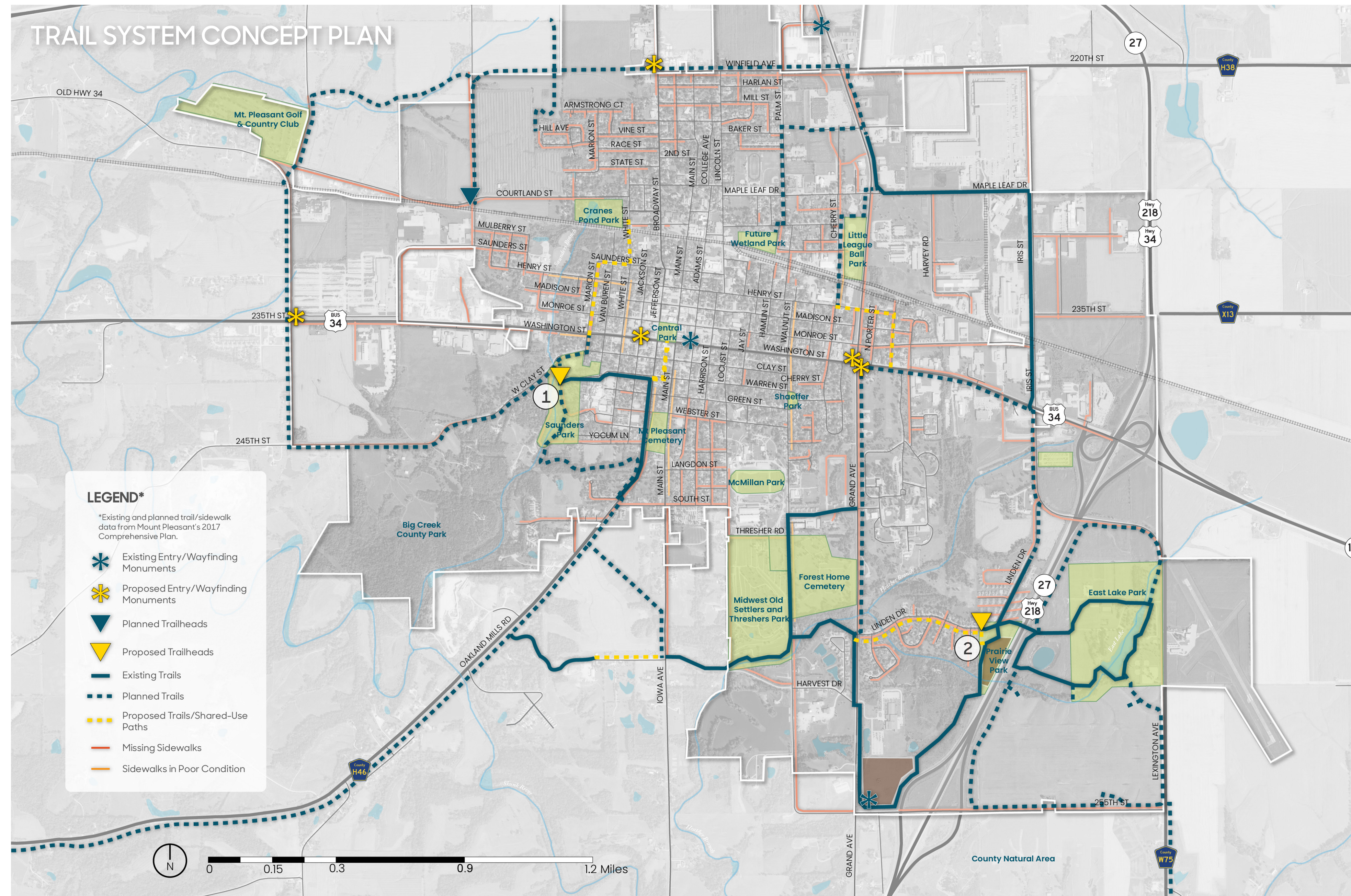
"Trails in excellent condition."

+ LIKES

Existence/Effort

Coverage

Quality



# Online Survey Results

Trail system improvements rank as the #5 priority of six potential projects. Survey respondents listed perceived positives and negatives of the system (left), and suggested the following:

- Restrooms, provided they are kept clean and safe from vandalism, and drinking fountains
- More trails on the west side of town and increased connectivity to downtown/businesses
- City-wide loop trail, trails through city
- Trail maps/markers along trails, way-finding signage for destinations, and mile markers
- Landscaping; native plantings for wildlife
- Dog bag/waste disposal stations
- More parking, including parking for food trucks
- Lighting and emergency phones
- Information boards/displays about town, history, etc.
- Designated lanes for pedestrian vs bike traffic

## Phase One: Trailheads + Connections

Community Visioning survey respondents and focus group participants requested additional services and amenities along trails, namely litter receptacles, pet waste stations, benches, restrooms, and lighting. Some also expressed a desire to increase linkages to the downtown district, schools, and regional trails (see boards 3d, 4f). In an online follow-up survey by the design team, however, several residents expressed that they had never used the trail system, while others said they were unaware it existed. It is evident that the trail system requires both small- and large-scale interventions for improvement, as proposed in the phasing plan below. We discuss Phase One here: the establishment of two critical trailheads and vital connections in the trail network.

Primary goals of Phase One improvements include:

- Increase trail visibility, access, and way-finding for greater trail use
- Create destinations along the trail system that also serve as launching points into the trail system
- Provide additional amenities for trail users for a more comfortable and welcoming experience

- DISLIKES

Safety Concerns

Few Amenities/Facilities

Limited Access/Visibility

"Not safe at night."

"Not pet friendly."

"It is a very nice thing for residents in the far SE part of town, but it is basically useless to all others."

"At times, the bicycles are dangerous."

"Lack of restroom facility other than what's located at East Lake."

"Never designed to be a commuter trail system."

"A bit intimidating to be that far away from people if an emergency were to arise."

"Nothing stands out. No hint as to what Mt. Pleasant has going for it."

"If my tax money is paying for them, why don't I know about them?"



# Mount Pleasant Trail System

## Genus Landscape Architects

LA: Dylan Jones, PLA, ASLA  
Intern: Carissa Shoemaker

Iowa State University | Trees Forever | Iowa Department of Transportation

