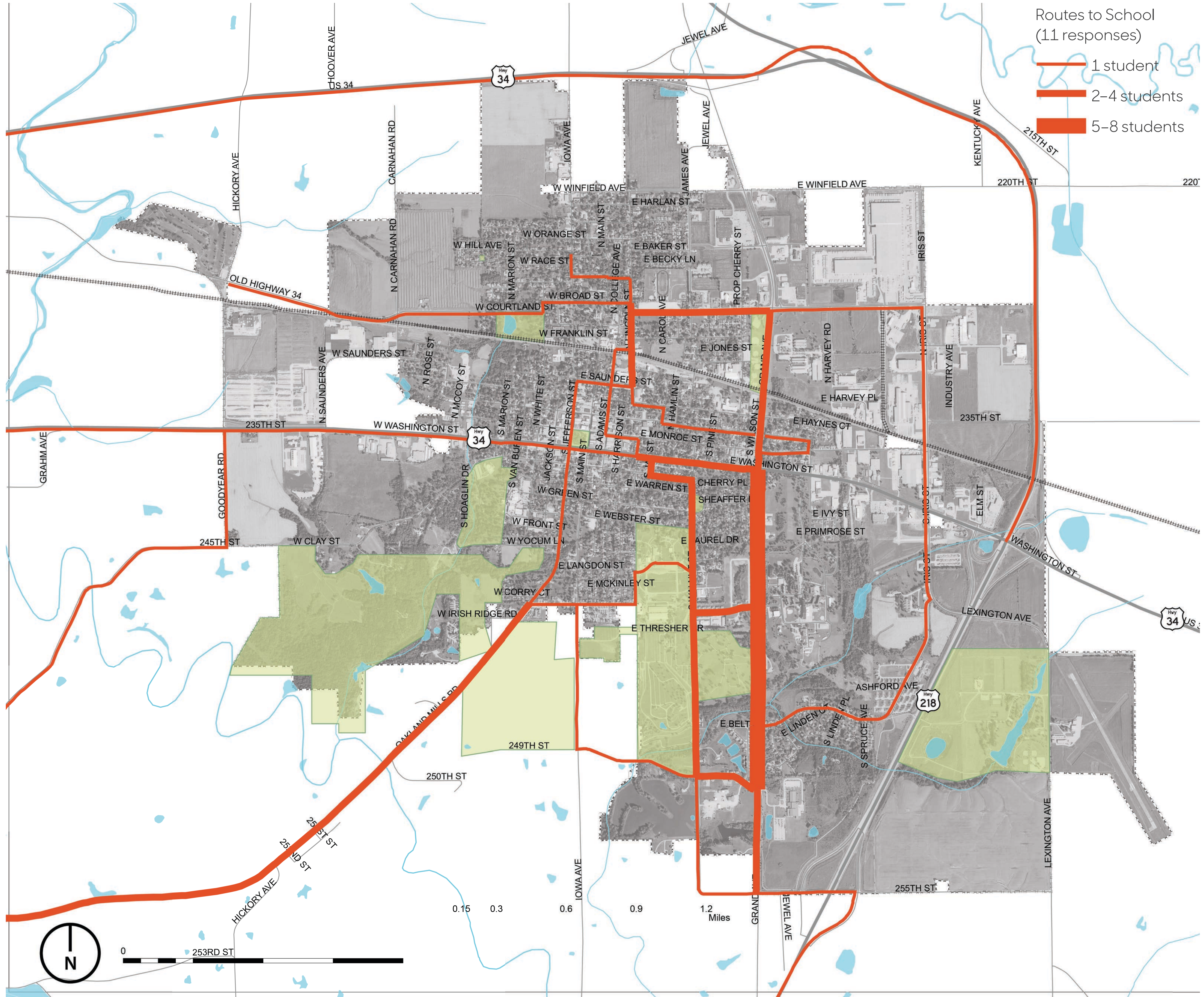


# How They Get There

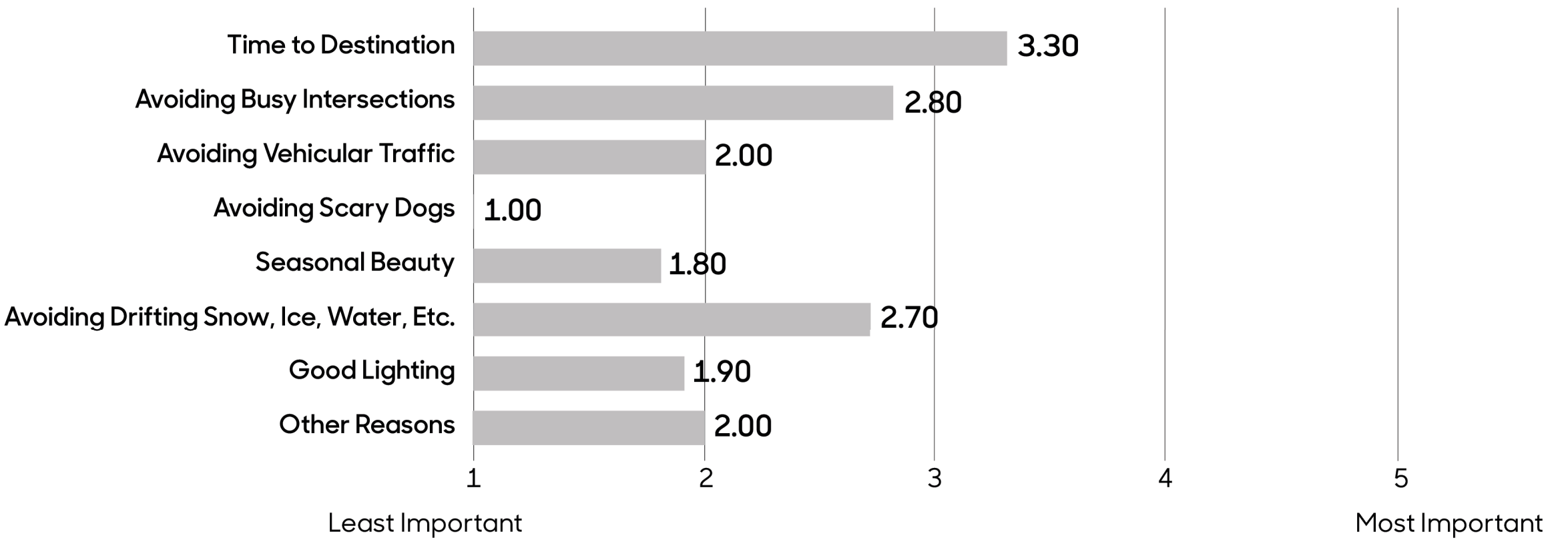
This map shows the routes to school identified by 11 Mount Pleasant high-school students. The frequency that the routes are used is depicted by their width, with most frequently used routes being the thickest. The primary corridor to the high school is South Grand Avenue. Some students also take South Locust Street to Harvest Drive. Students who live outside Mount Pleasant use Highway 34, Highway 34 Business, and Oakland Mills Road to get to town.

The circulation patterns that emerge when routes for biking, walking, and commuting are overlaid suggest suitable types of transportation enhancements. For example, where pedestrian and vehicular traffic intersect, such improvements could include creating better visibility, defining crossing points, or improving signage.



# Why They Go That Way

On a scale of 1 to 5, with 5 being the most important, student participants ranked the characteristics and features that factored into their choice of route to school. The only factor that holds any importance among the participants is the time to destination, with a mean value of 3.30. Students were fairly neutral on the importance of avoiding busy intersections and drifting snow, ice, water, etc. Other factors such as avoiding vehicular traffic and good lighting are considered less important, and avoiding scary dogs is the least important among participants, which is not surprising since none of the students indicated that they walk or bike to school.



Map Source: Iowa Department of Natural Resources, "Natural Resources Geographic Information Systems Library," <http://www.igsb.uiowa.edu/nrgislib/>.

# Mount Pleasant Routes to School

**High School Transportation Survey and Focus Groups**  
 Julia Badenhope, Sandra Oberbroeckling, Aaron Lewis, Minni Davis, Clare Kiboko,  
 Kristian Schofield, Austin Alexander, Lexi Blank  
 Iowa State University | Trees Forever | Iowa Department of Transportation

