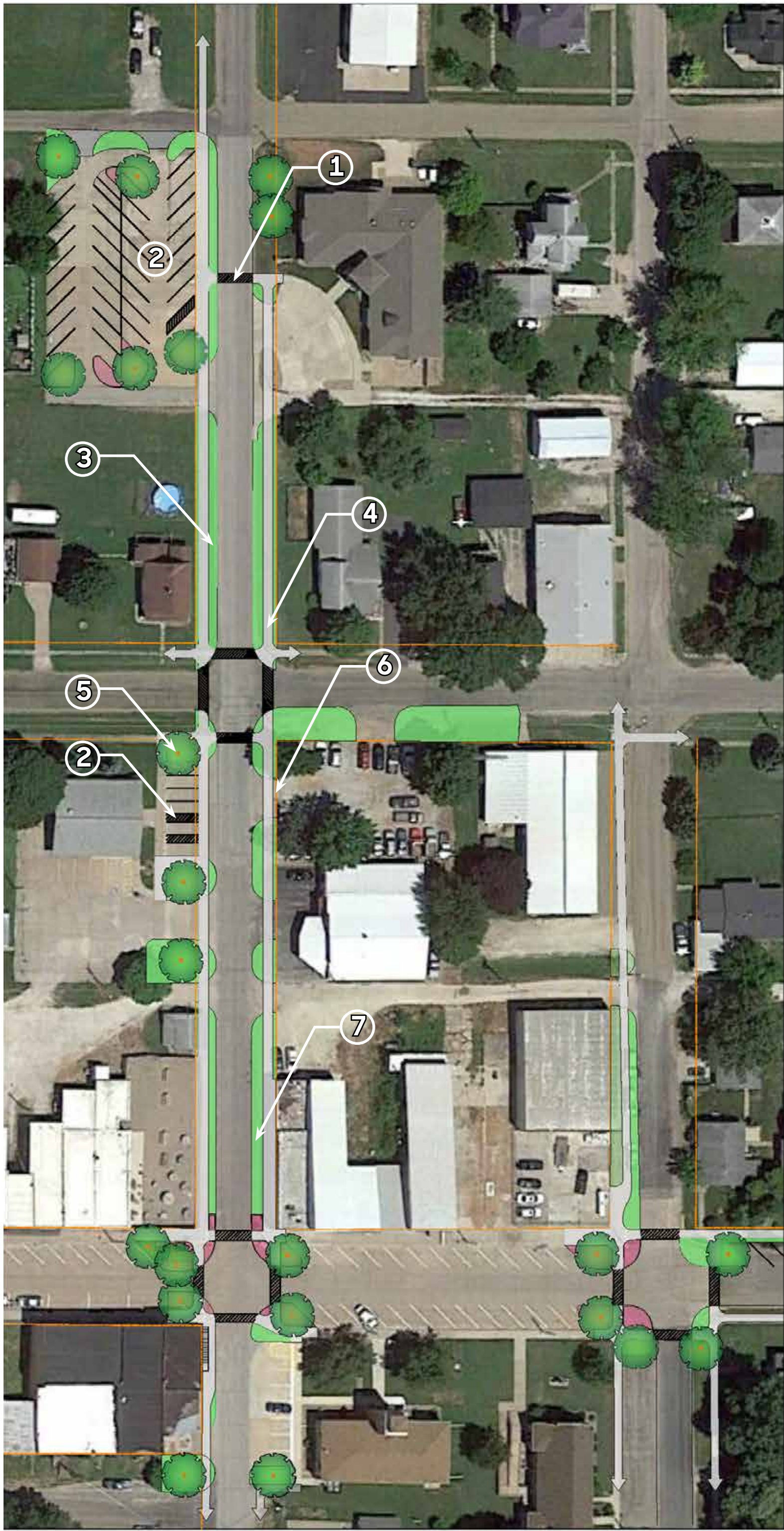




Existing areal of Main St. corridor from Division St. north to 2nd Street.



Proposed concept plan for downtown streetscape enhancement along Main Street.

- Notes For Concept Plan**

 - ① DELINEATED CROSSWALK
 - ② PARKING LOT WITH STALLS DELINEATED; INCLUDES THE REQUIRED NUMBER OF DESIGNATED HANDICAP STALLS AND INCORPORATION OF ISLANDS FOR GREENSPACE
 - ③ WAY-FINDING SIGNAGE
- ④ ADA COMPLIANT SIDEWALK AND RAMP AT STREET CROSSINGS
 - ⑤ DECIDUOUS STREET TREES TO PROVIDE SHADE AND IMPROVE AESTHETICS
 - ⑥ ACCESS CONTROL TO IMPROVE SAFETY, CIRCULATION AND AESTHETICS WHILE ENHANCING STORM WATER QUALITY AND MINIMIZING STORM WATER RUNOFF
 - ⑦ PAVEMENT/ GRAVEL REPLACED WITH MAINTAINED GRASS OR GRASS AREA WIDENED TO STANDARDIZE TWO-WAY STREET WIDTH TO ENHANCE SAFETY, CIRCULATION AND STREETSCAPE



Existing NE Corner of Main St. & Division Intersection

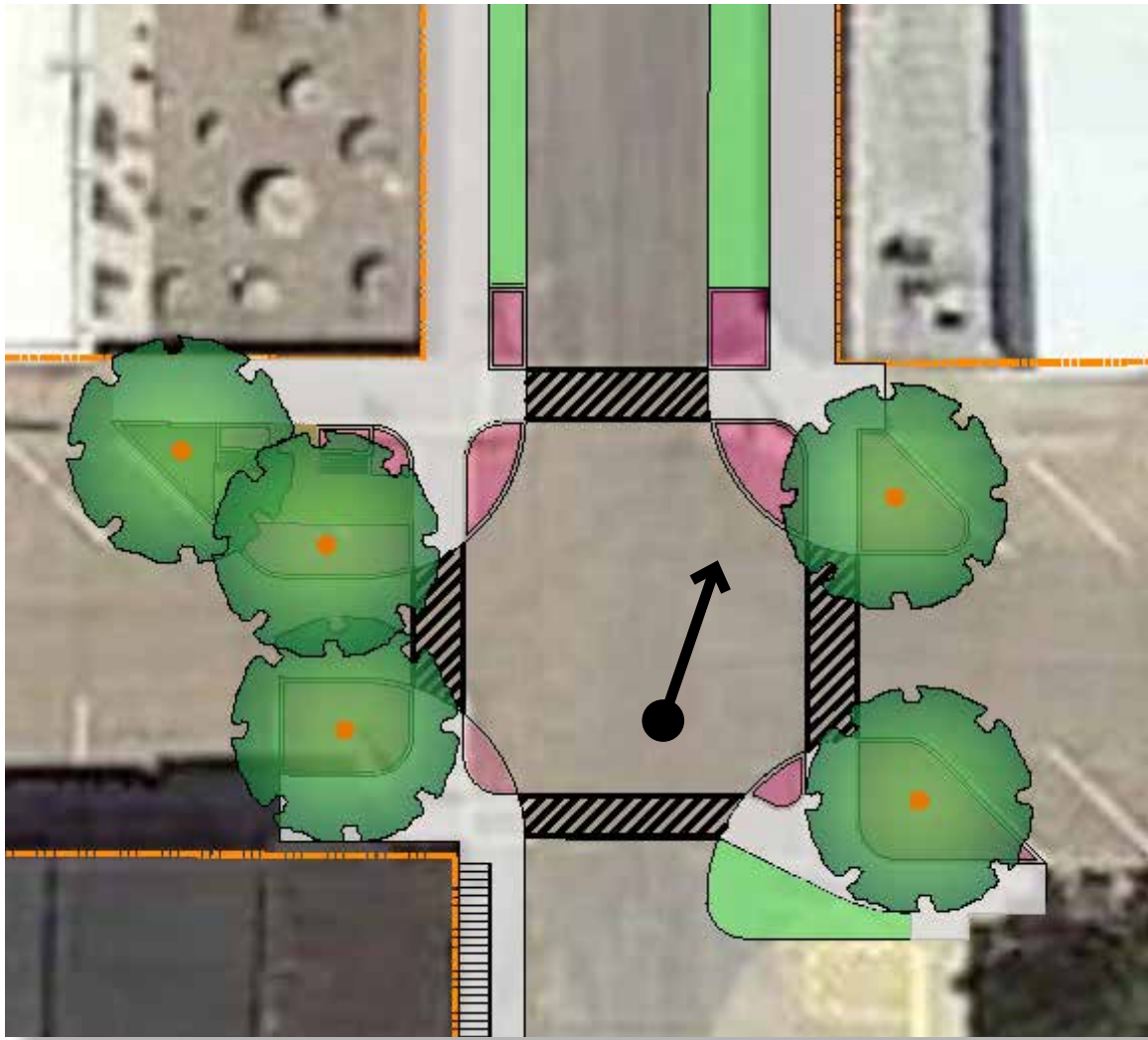


Proposed Concept: Main St. & Division Intersection, looking Northeast

Downtown Enhancements

The image edit above provides a visual of how the aesthetics of the downtown area would be changed if the proposed concept plan was implemented.

The changes include: landscaped bump-outs; murals; decorative lighting; delineated crosswalks; access control; way-finding signage; ADA compliant sidewalks and street crossings; street trees; and well defined roadways due to the removal of excess pavement/gravel and replacement with maintained grass.



Enlarged conecept plan showing location and direction that photo was taken for the image edit shown to the upper left.