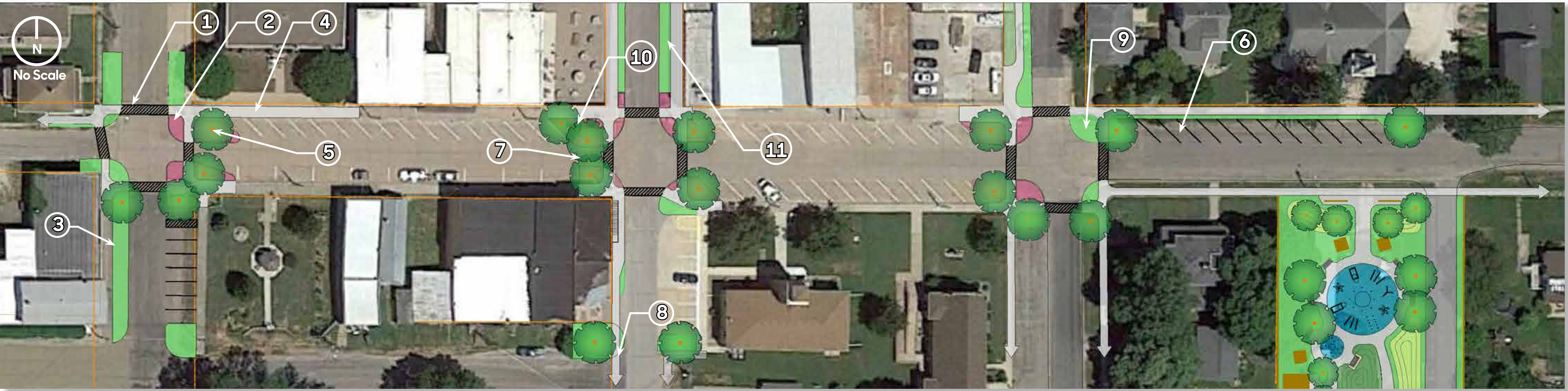
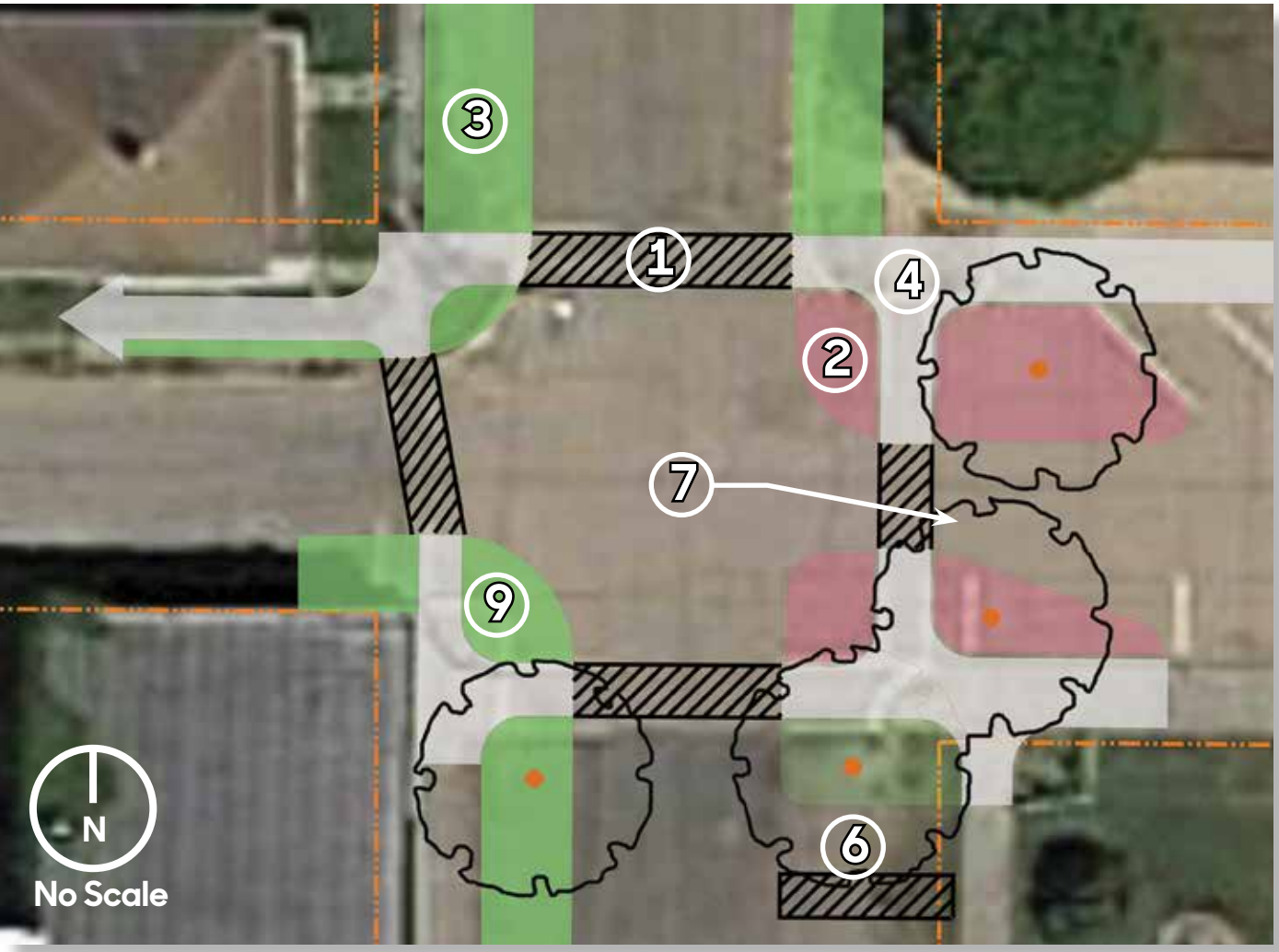




Existing aerial of Division Street



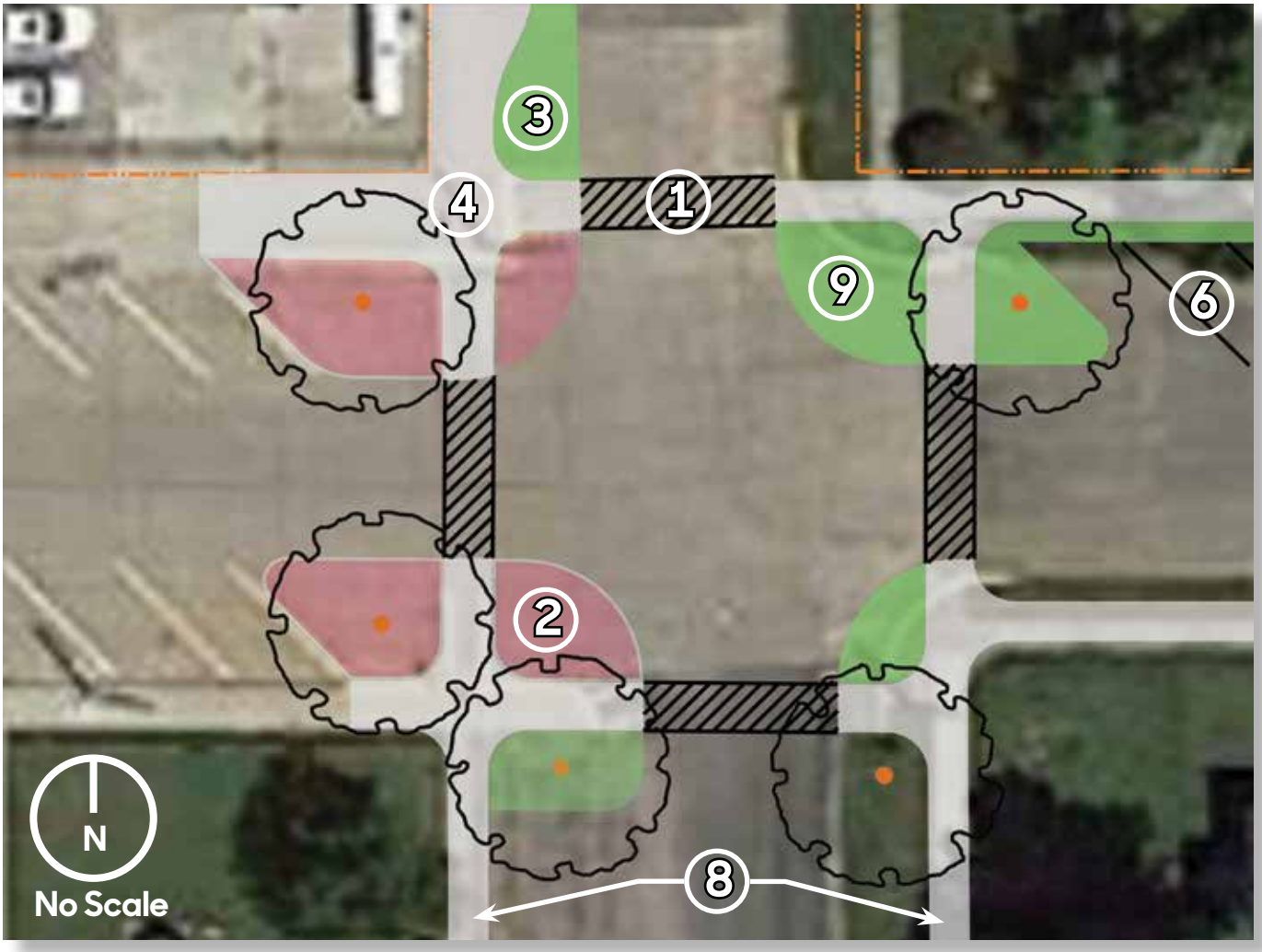
Proposed concept plan for downtown streetscape enhancement along Division St. from Kearny St. to Church St.



Enlarged concept plan of Kearny St. & Division St. intersection with proposed trees outlined (no color)



Enlarged concept plan of Main St. & Division St. intersection with proposed trees outlined (no color)



Enlarged concept plan of Church St. & Division St. intersection with proposed trees outlined (no color)

Downtown Enhancements:

The concept plans presented on this board and Board 14 illustrate methods for improving accessibility, connectivity, safety, way-finding, circulation and the overall aesthetics of the downtown area (re: Emerging Themes, Board 3c). Also addressed are ways that the city can incorporate public art and more greenspace .

Implementing the proposed enhancements should be part of the city’s overall revitalization plan and efforts for attracting businesses and people to Morning Sun. Improvements proposed for the downtown can be retrofitted into the existing streetscape as illustrated and they can be staged/phased in over a period of time.

Following are some of the elements of the downtown enhancement plans:

- ADA-compliant sidewalks on both sides of the street and ADA-compliant crosswalks - all to encourage pedestrian traffic
- Curbed bump-outs on the corners of intersections along Division Street to help calm traffic and incorporate more greenspace into the downtown area as well as provide a place for street trees. The street trees will provide some much needed shade to the downtown
- Way-finding signage
- Delineated parking stalls to maximize parking spaces
- Designated handicapped stalls placed in each block of the downtown to comply with governmental regulatory requirements
- Decorative lighting and site amenities such as benches and trash receptacles
- Seating area in the NW corner of Main St. and Division St. intersection

Notes For Concept Plans

- 1 DELINEATED CROSSWALK
- 2 MULCHED PLANTING AREA IN BUMP-OUT WITH SHORT PLANTINGS TO ALLOW VISIBILITY. PLANTINGS USED TO HIGHLIGHT THE DOWNTOWN AREA
- 3 PAVEMENT/ GRAVEL REPLACED WITH MAINTAINED GRASS OR GRASS AREA WIDENED TO STANDARDIZE TWO-WAY STREET WIDTH TO ENHANCE SAFETY, CIRCULATION AND STREETSCAPE
- 4 ADA-COMPLIANT SIDEWALK AND RAMP AT STREET CROSSINGS
- 5 DECIDUOUS STREET TREES PLANTED IN BUMP OUT TO HIGHLIGHT INTERSECTIONS, PROVIDE SHADE AND IMPROVE AESTHETICS; TREES PLANTED OUTSIDE OF THE SIGHT TRIANGLE
- 6 DELINEATED PARKING STALLS WITH REQUIRED NUMBER OF DESIGNATED HANDICAPPED STALLS
- 7 NARROWED STREET ENTRANCE TO VISUALLY ALERT VISITORS DRIVING THAT THIS SECTION OF DIVISION STREET IS A ONE-WAY
- 8 CONTINUE ADA-COMPLIANT SIDEWALK ALONG PRIMARY CORRIDOR TO HWY. 78
- 9 GRASSED AREA IN BUMP-OUT MAINTAINED LAWN
- 10 SEATING AREA WITH BENCHES, RAISED PLANTER AND DECORATIVE PAVING
- 11 WAY-FINDING SIGNAGE