



Existing Division Street



Existing Lion's Locust Grove Park Sign



Existing Church Street



Proposed Concept: E. Division Street between School and Lion's Locust Park entrance, looking east

- Notes For E. Division Street Proposed Concept**
- 1 EXISTING PARK SIGN WITH DIFFERENT COLOR OF LETTERING (SEE ENLARGED EDIT)
  - 2 NATIVE PLANTS SUITABLE FOR SITE CONDITIONS AND WINTER STREET TREATMENTS
  - 3 EXISTING MAINTAINED LAWN AND SUBSOIL
  - 4 MULCH
  - 5 AMENDED/ENGINEERED SOIL MATRIX
  - 6 PERFORATED SUBDRAIN, IF NECESSARY
  - 7 DRAINAGE STONE
  - 8 ADA -COMPLIANT SIDEWALK
  - 9 PEDESTRIAN ACCESS TO PARK; LOCKABLE GATE
  - 10 DECIDUOUS TREES ALONG PERIMETER OF PARK FOR BUFFER



Proposed Enhancement to Lion's Locust Grove Park Sign



Proposed Concept: Church Street at Highway 78, looking northerly

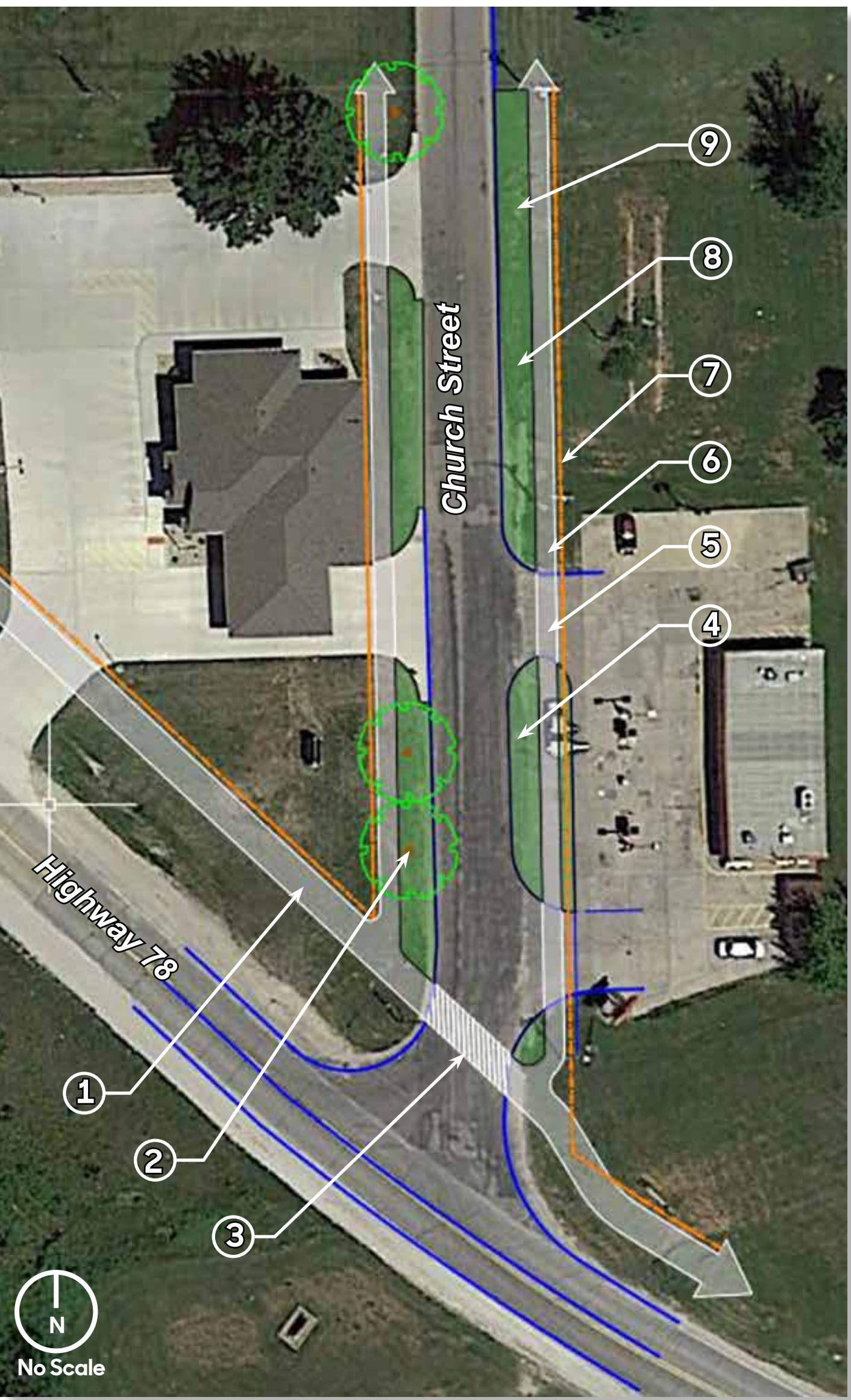
### Primary Corridors & Stormwater Management

The concepts presented on this board illustrate some of the treatments/methods that can be utilized to address a variety of issues identified by the community.

Bio-swales are a sustainable method to help manage stormwater, improve water quality, and create microhabitats.

Deciduous trees planted along the eastern border of Locust Grove Park define the park boundary and provide some buffering to the adjacent residences while also providing shade and creating a more "park like" feel. Trees planted along the road corridor (as shown in the Church Street concept) provide shade, visually strengthen the corridor, improve the streetscape aesthetics and help improve air quality.

ADA-compliant sidewalks improve accessibility, enhance safety, and visually strengthen the primary corridors while providing important connectivity. Sidewalks



Thumbnail Sketch of Proposed Concept for Church Street at Highway 78

- Notes For Church St. Plan**
- 1 PROPOSED MORNING SUN TRAIL
  - 2 DECIDUOUS STREET TREES
  - 3 CROSSWALK
  - 4 EXCESS PAVEMENT REPLACED WITH MAINTAINED GRASS
  - 5 ACCESS DRIVE
  - 6 ADA-COMPLIANT SIDEWALK
  - 7 EXISTING ROAD RIGHT-OF-WAY
  - 8 MAINTAINED GRASS
  - 9 WAY-FINDING SIGNAGE

on both sides of the primary corridors also help visually imply their importance.

Providing separate pedestrian and vehicular entrances to Locust Grove Park assist in improving circulation and safety as well as improve the parks appeal to users. Changing the color of the lettering on the park sign to one with more contrast improves the readability of the sign and allows for easier identification by motorists.

Access control along roadways helps improve circulation and safety as well as reduces the amount of unnecessary pavement and/or gravel. This in turn reduces stormwater runoff, improves stormwater quality and creates a more organized and aesthetically pleasing streetscape.

Access control simply means that the city would require that access drives be located a safe distance from intersections, and that the widths of the drives and radii are designed to accommodate the intended types of vehicles.