



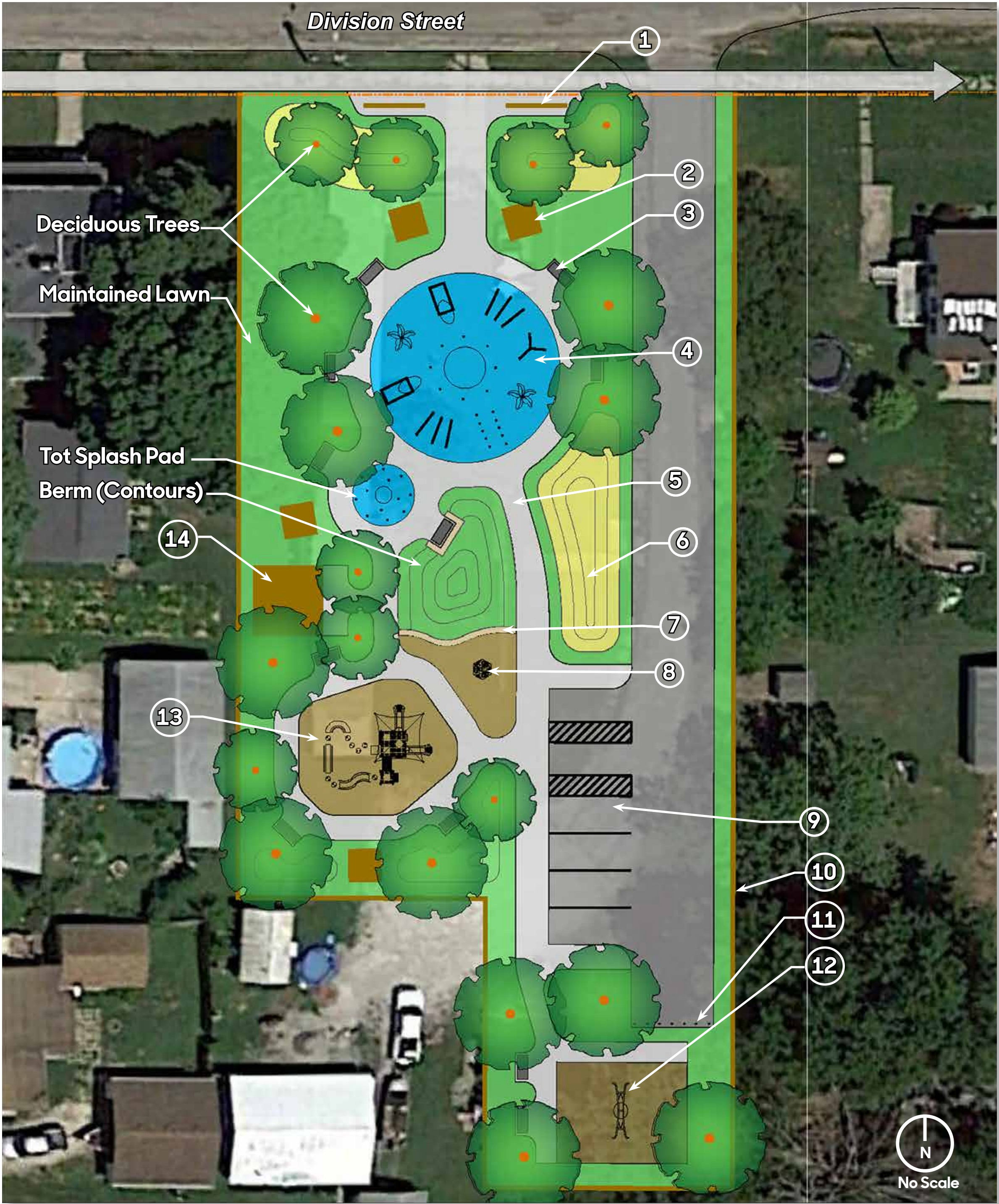
Existing property owned by Mutual Telephone Company of M.S.



(A) "Poseidon" splash pad by Spray and Play

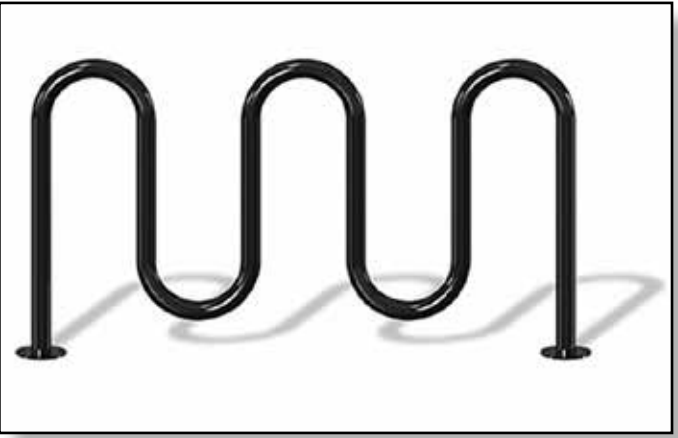


(A) Examples of some of the "Poseidon" splash pad components



Proposed concept plan for a new proposed park (referred to on this board and in this board set as "City Park")

Concept Plan Notes			
(1) BIKE RACKS; SEE PHOTO B	(8) LANDSCAPE STRUCTURES CLIMBING CUBE (AGES 2 - 12); SEE PHOTO F		
(2) MICRO PICNIC SHELTER WITH TABLE; SEE PHOTO C	(9) VEHICULAR PARKING AREA WITH DELINEATED AND SIGNED HANDICAPPED STALLS		
(3) BENCH	(10) PERIMETER PRIVACY FENCE		
(4) YOUTH/ADULT SPLASH PAD; SEE PHOTO A	(11) BOLLARDS TO PREVENT VEHICULAR ENCROACHMENT		
(5) ADA-COMPLIANT SIDEWALK	(12) LANDSCAPE STRUCTURES MULTIPLE USER "OODLE SWING" (AGES 5 TO 12); SEE PHOTO E		
(6) NATIVE PRAIRIE GRASS PLANTING	(13) LANDSCAPE STRUCTURES "MADE IN THE SHADE" PRE-K PLAYGROUND; SEE PHOTO G		
(7) LIMESTONE RETAINING/SEATWALL	(14) RESTROOM WITH UTILITY ROOM; SEE PHOTO D		



(B) "Wave" Bike Rack



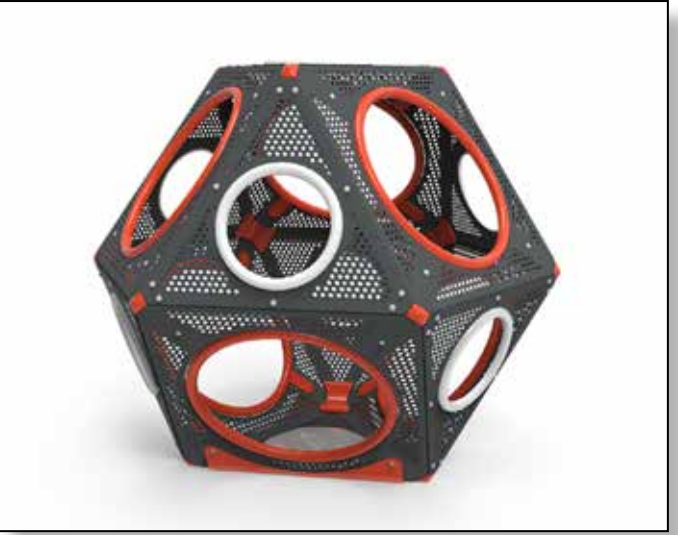
(C) Micro Picnic Shelter & Table



(D) Restroom with Utility Room



(E) ADA accessible "Oodle Swing"



(F) Climbing Cube



(G) "Maid in the Shade" Playground for Pre-K by Landscape Structures



(G) Additional views of "Maid in the Shade" Playground for Pre-K

Proposed Greenspace: City Park

The proposed park shown on this board is located on property owned by the local telephone company and is conveniently and centrally located on the south side of Division Street, between Church Street and S. Blaire Street. It is within a short walking distance of the downtown, public library and Morning Sun School.

To address the needs and goals identified by the community during the community visioning process, this park incorporates the following elements:

- Pre-K (ages 2 to 5) play equipment
- Splash Pad - one for tots/young children and one for youth/adults
- Restroom with utility room
- Micro picnic shelters with picnic tables and benches located throughout the park and placed to allow for strategic viewing of play areas
- Handicapped-accessible swing
- Deciduous trees to provide shade
- Bermed areas with both native prairie and maintained lawn to provide imaginative play opportunities and create visual interest
- Limestone retaining/seatwall to naturalize the area and allow berming
- Wide sidewalks to allow for ease of accessibility and circulation
- Parking lot for vehicles and bike parking to accommodate users
- Climbing cube to provide play opportunities for Pre-K to 12 age group

Morning Sun

Proposed Greenspace: City Park

Flenker Land Architecture Consultants, LLC

LA: Meg K. Flenker, PLA, CPESC, CPSWQ

Intern: Richard Garcia

Iowa State University | Trees Forever | Iowa Department of Transportation

