

Program Overview

The city of McGregor is one of 10 communities selected to participate in the 2023 Iowa's Living Roadways Community Visioning Program. The program, which selects communities through a competitive application process, provides professional planning and design assistance along transportation corridors to small Iowa communities (less than 10,000 residents).

Visioning Program Goals:

1. Develop a conceptual plan and implementation strategies alongside local community residents.
2. Enhance natural, cultural, and visual resources existing within communities.
3. Assist local communities in using external funds as leverage for transportation corridor enhancement.

Each visioning community works through a planning process consisting of four phases of concept development:

1. Program initiation
2. Needs, assessment, and goal setting
3. Development of a concept plan
4. Implementation and sustained action strategies

Each visioning community is represented by a steering committee of local residents and stakeholders who take part in a series of meetings and focus groups that are facilitated by field coordinators from Trees Forever. The Community Visioning program, as part of Iowa State University's Landscape Architecture Extension, organizes initial focus groups with design interns as well as transportation needs and behaviors surveys. The program is sponsored by the Iowa Department of Transportation.

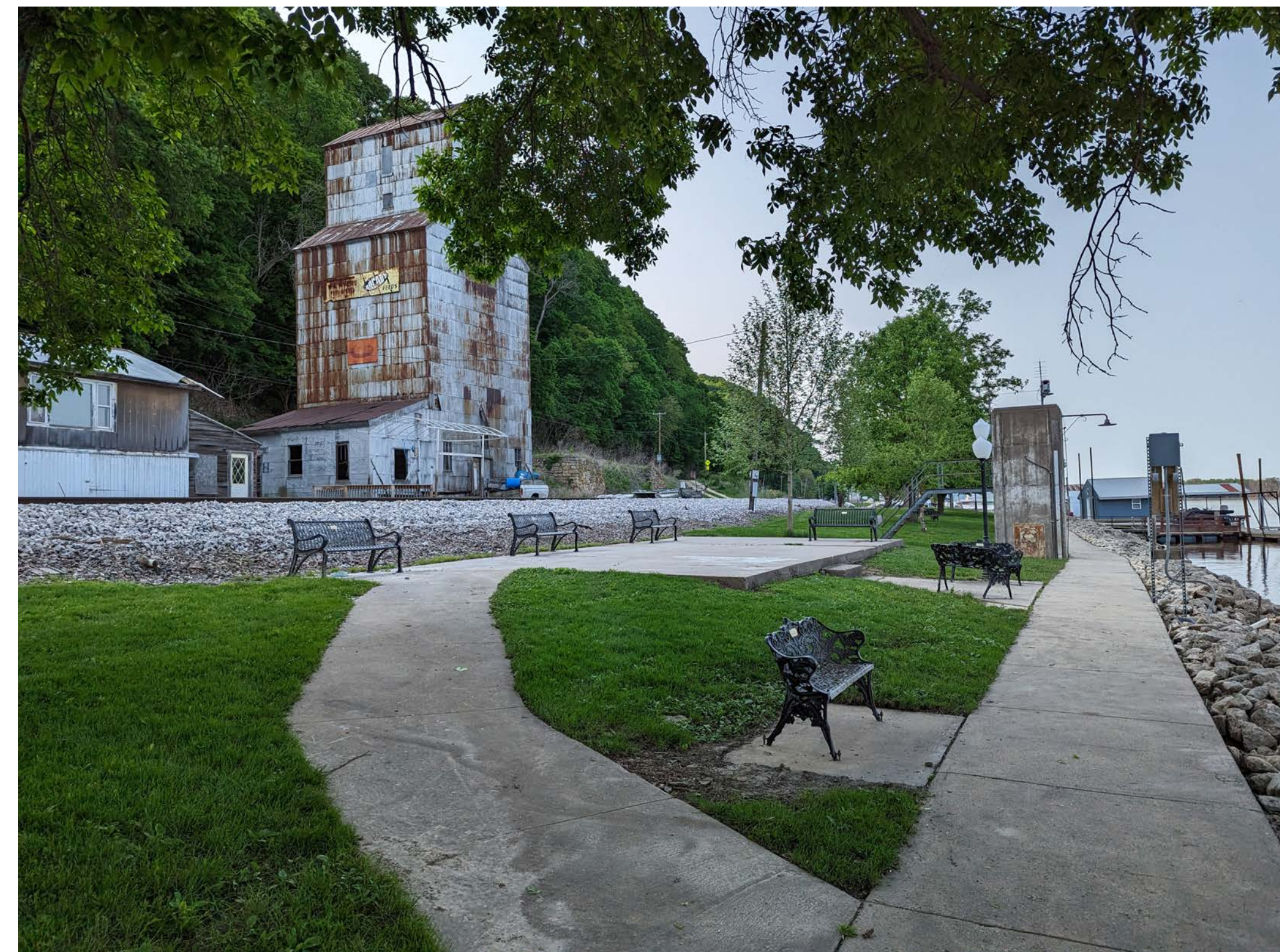
Community Goals

The McGregor steering committee identified a number of goals and priority areas during the visioning process, which include connecting McGregor and Marquette through trail extensions, providing safe pedestrian access from the riverfront park over the railroad tracks, creating way-finding signage, and making improvements to Peace Park and Triangle Park that promote safety and accessibility for residents and visitors.

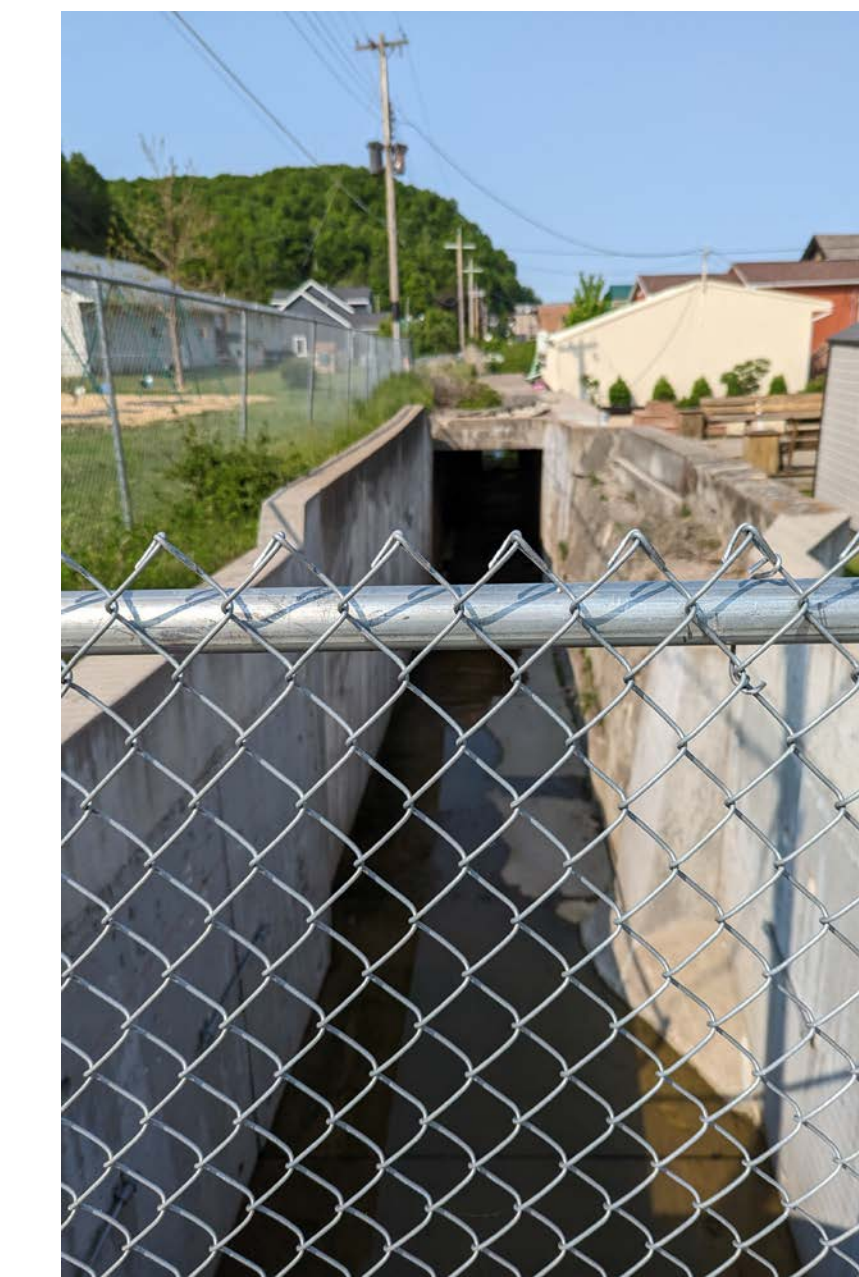
Capturing the McGregor Vision

Based on the needs and desires of the local residents, as well as a detailed inventory of community resources, the design team developed transportation-based community improvement project concepts, which are illustrated in the following set of presentation boards:

1. Program Overview
2. Bioregional Assessment
3. Transportation Assets and Barriers Assessment
4. Transportation Inventory and Analysis
5. What, Where, & Why?
6. Concept Overview
7. Connecting Two Cities
8. Peace Park Improvements
9. Ann Street Greenway
10. Triangle Park Improvements
11. Identity & Way-finding
12. Safety and Accessibility
13. Implementation Plan



The paths along Great River Road pass through the Riverview Public Park but end at riverfront residential properties. The steering committee has expressed interest in improvements that allow for better connection to this space.



A stormwater channel runs parallel to Main Street from Buell Avenue to 3rd Street. The steering committee expressed interest in its beautification.



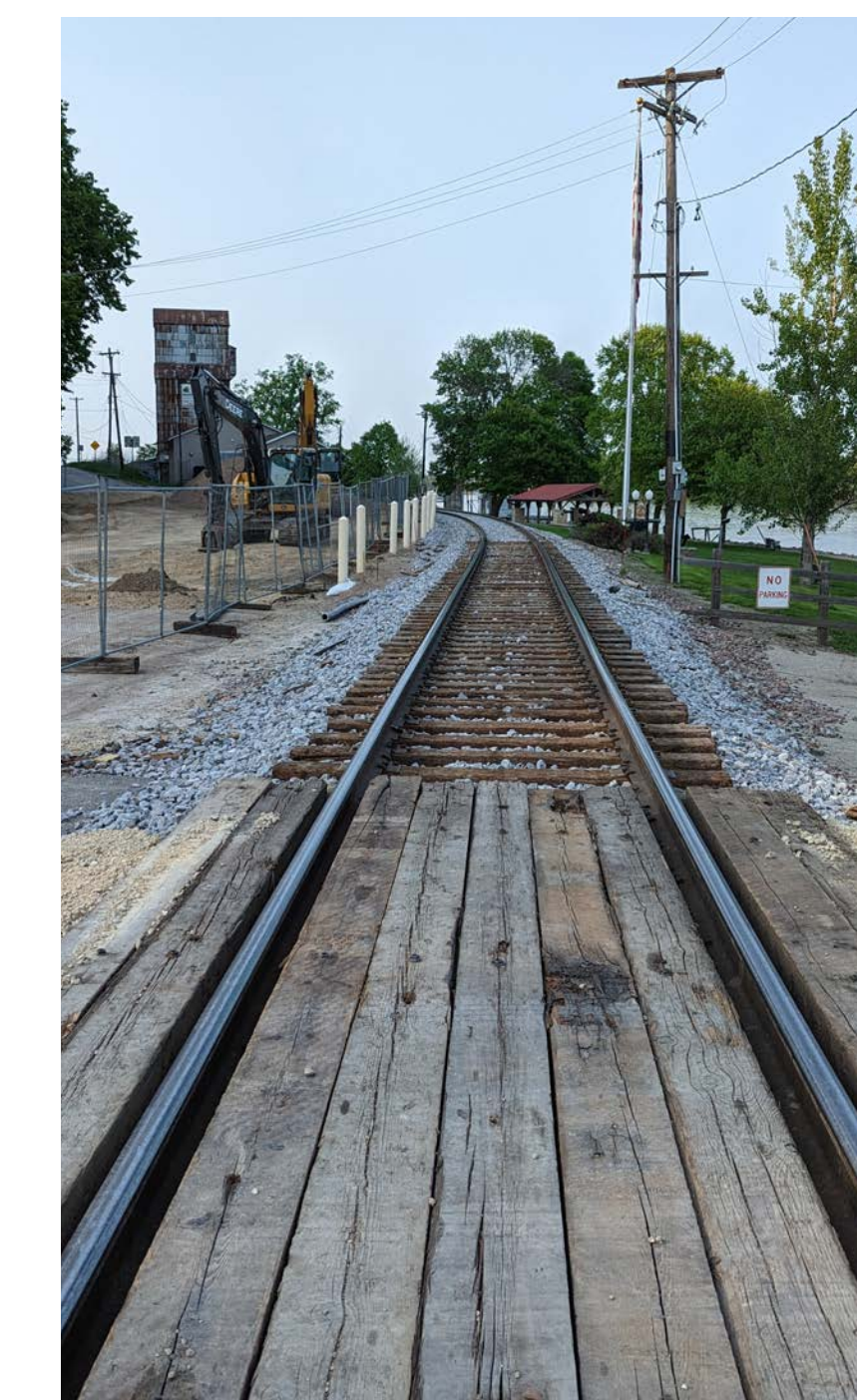
The steering committee identified properties adjacent to Ann Street and 6th Street that were for sale by WB Properties that could function as a connection between Peace Park and downtown.



To wrap up the What, Where, & Why meeting, the steering committee members voted on their top three improvement projects/themes that the design team will focus on this year.



Triangle Park serves as the primary meeting place for residents and visitors to gather in McGregor. Because restaurants and shops line 1st Street, Dr Smith Street, and Main Street, the steering committee expressed interest in expanding outdoor seating here.



The railroad tracks that cross in front of the marina have caused problems for residents and visitors alike. After the most recent flood of shoreline, is susceptible to flooding, the railroad was elevated a foot and a half.