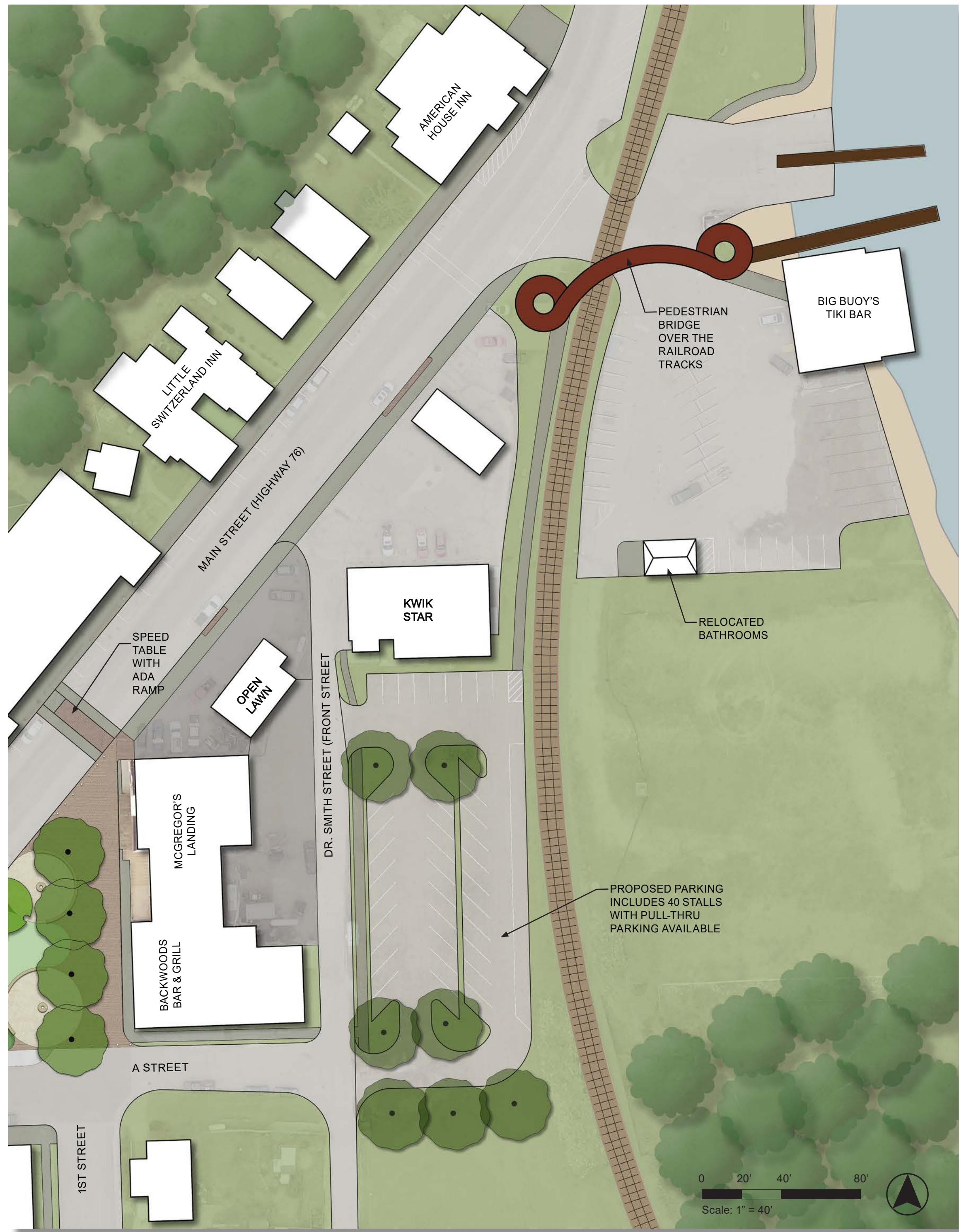
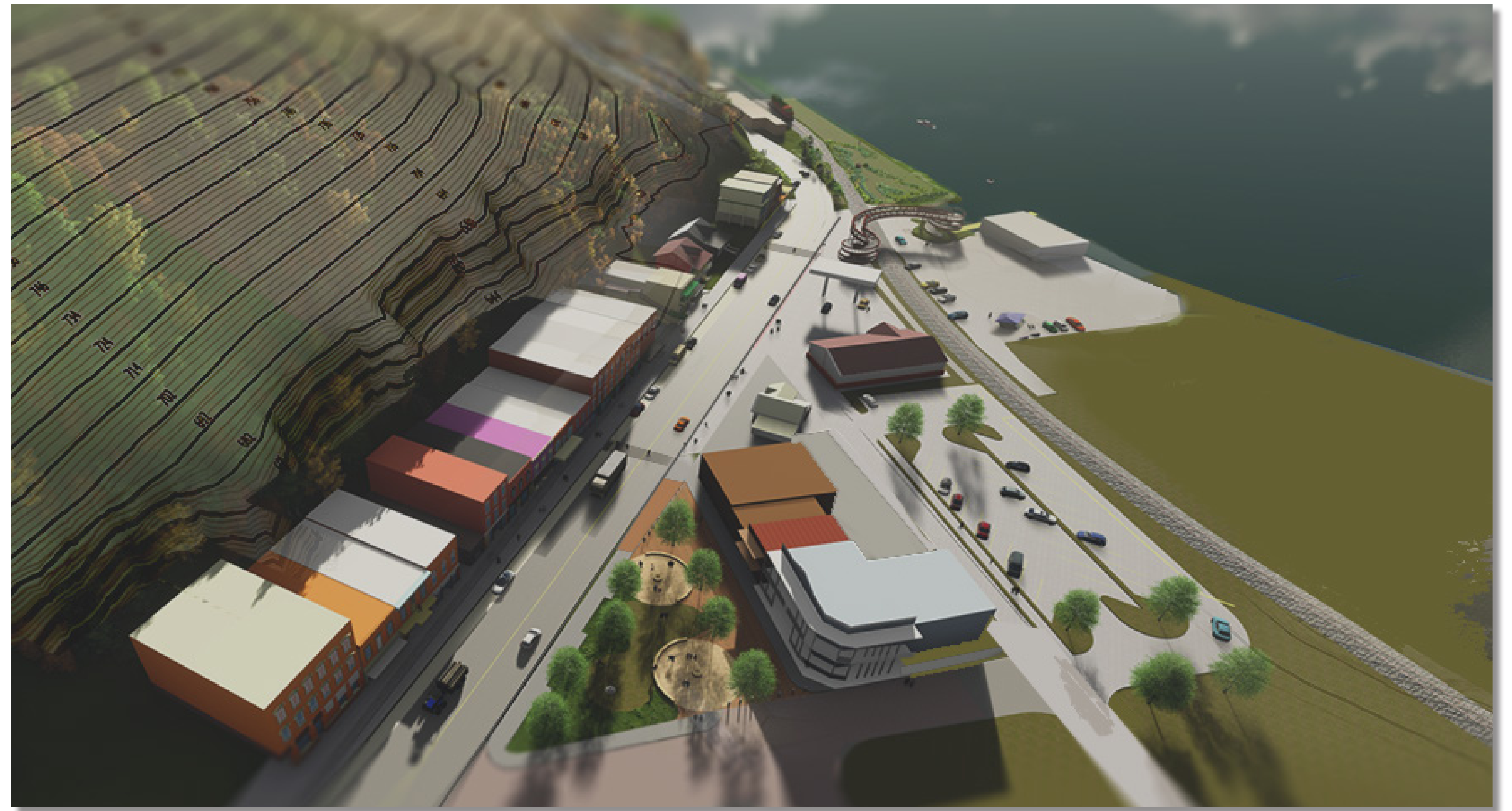


Safety and Accessibility

The city of McGregor needs connectivity improvements because of the challenges topography poses on the allocation of public space throughout the community. The interventions include expanding trailheads that connect to Pikes Peak State Park to canopy walks, constructing a pedestrian bridge to get people safely over the railroad tracks to the riverfront, and expanding parking along Dr Smith Street and in multiple spots adjacent to Main Street.



Plan view of parking improvements along Dr. Smith Street.



Bird's-eye view of Triangle Park, Dr. Smith Street parking improvements, and the pedestrian bridge over the railroad tracks. Traffic-calming measures are proposed down Main Street, including signaled crosswalks and a speed table that also provides an ADA-accessible route to the businesses along the west side of Main Street.



Perspective view of the proposed crosswalk adjacent to Turner Park looking northeast down Highway 18. This crosswalk would have a signaled pedestrian sign to alert vehicles.



A view looking west down Highway 18 at the signaled crossing adjacent to the MFL MarMac Middle School. An on-street bike lane is also provided.