



Proposed MUTCD Compliant 3M Reflective Signage



View East, Proposed Pedestrian Corridor Improvements

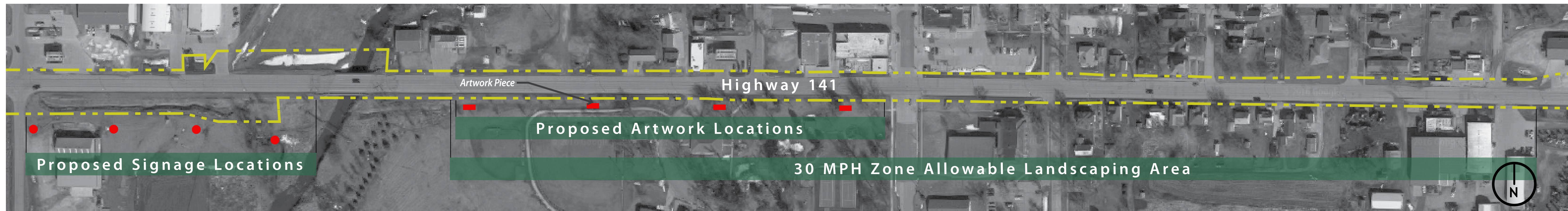
Highway 141 Improvements

Highway 141 is one of the main vehicular corridors through Manning. It is currently a four-lane highway and is oriented towards vehicular transportation. The highway has a mixture of building uses along it from local businesses, residential areas, to the City Park and Community Center. Focus groups have found that the highway's lack of sidewalks are a major safety hazard for the adults and children that need to cross the highway from the community baseball fields and the Community Center. The focus group also found that there is also a lack of wayfinding signage along this corridor.

The proposed solution to Highway 141 is to reduce the highway from four lanes to three. The three lanes would consist of two travel lanes, with the middle lane becoming the turning lane. This change would occur throughout the central core of town and help reduce traffic speeds and increase visibility of the pedestrians along the roadway. By removing one travel lane in each direction, it becomes possible to install sidewalks along the highway. This improves safety for both pedestrian and vehicular traffic without impeding the current traffic patterns. Further traffic studies will be required by the IDOT prior to implementation.

It was noted during the transportation meeting that there is a desire to see additional landscaping and artwork along Highway 141. This artwork would need to conform to the IDOT regulations and be placed in the clear zone of the 30 MPH area, and not impede drivers' sight triangle.

Way-finding signage is essential to every community. It highlights areas of interest to visitors and residents and shows a sense of pride and cohesive design throughout the town. Signage for the community of Manning is shown in the image on the far left of the pole-mounted directional sign. This proposed sign follows current MUTCD (Manual on Uniform Traffic Control Devices) guidelines for text and arrows depending on the speed and type (pedestrian or vehicular) of traffic. The signs should have 3M reflective finishes to add nighttime visibility. The IDOT will need to confirm locations and proposed text prior to installing these pole mounted signs to existing street lights within the community.



Proposed Locations for Sculptural Signage

Manning

Highway 141 Improvements

Landscape Architect and Intern: RDG Planning & Design - Jen Cross, PLA, ASLA and Ashleigh Gildon

Iowa Department of Transportation Trees Forever ISU Landscape Architecture Extension ISU Extension Community and Economic Development

IOWA'S
LIVING
ROADWAYS
Summer 2016