

Photo 1: Looking southeasterly towards the empty city lot located at SE corner of Main St. & Long Ave.

Vignette #1: Concept 1

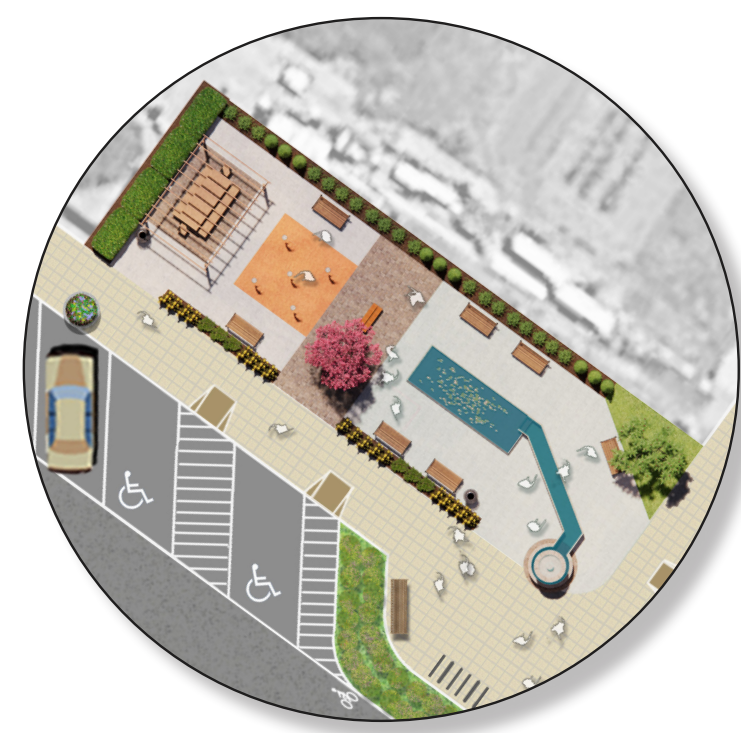


Photo 2: Looking southeasterly towards the empty city lot located at SE corner of Main St. & Long Ave.

Vignette #2: Concept 2



Photo 3: Looking southerly along the existing downtown Main Street corridor from the southeastern corner of the Main Street and Long Avenue intersection.



Photo 1 Edit, Concept 1: Proposed enhancements for the pocket park located on city property.



Photo 2 Edit, Concept 2 (Alternative to Concept 1): Proposed enhancements for the pocket park located on city property.



Photo 3 Edit: Proposed enhancements include: landscaped intersection bump-outs, reconstructed sidewalks for improved circulation and accessibility, coordinated site amenities, wall murals, painted vehicular lights with metal banners, and signage to identify public destinations.

(Downtown Concept - continued from board 10)

Pocket Park, Concept 1

- **Limestone Slab Columns:** Limestone slabs with simple corten outline depictions of native wildlife offset from the limestone and backlit.
- **Dry Fountain:** Decorative amenity for passersby and bystanders as well as a place for all ages to cool off during the warm weather. The movement of the sporadic sprays of varying heights and spray patterns will provide movement during the daytime and can be lit for evening enjoyment.
- **Site Amenities & Landscaping:** Picnic tables with an overhead shade structure styled to create dappled shade; benches, trash receptacles, and perimeter landscaping to enhance user comfort. Bollard lighting to provide enhanced nighttime safety without being intrusive to the dark sky. Decorative wood fence with landscaping to screen park from adjacent properties.

Pocket Park, Concept 2

- **Cascade Fountain & Reflection Pool:** An aesthetic, serene, and intriguing focal point to enhance user experience, attract visitors, and augment curb appeal.
- **Dry Fountain:** Decorative amenity for passersby and bystanders as well as a place for all ages to cool off during the warm weather. The movement of the sporadic sprays of varying heights and spray patterns will provide movement during the daytime and can be lit for evening enjoyment.
- **Site Amenities & Landscaping:** Picnic tables with a pergola overhead to provide partial shade; benches, trash receptacles, and perimeter landscaping to enhance user comfort whether users are socializing or just unwinding.

- **Pocket Park:** Transforms an empty city lot into a public gathering space for all ages with various amenities to entice residents and visitors into the downtown.



Dry fountains such as those proposed in both Pocket Park concepts are a great way to integrate water into an urban area. They are aesthetic, provide movement, and the sound can be calming. They also provide an opportunity for all ages and abilities to cool off during a hot summer day. Added lighting, whether white or colored, can create a dramatic and intriguing visual at night.

Lost Nation Downtown & Pocket Park

FLENKER LAND ARCHITECTURE CONSULTANTS, LLC

LA: Meg Flenker, PLA, CPESC, CPSWQ

Intern: Haoyue "Karma" Yang

Iowa State University | Trees Forever | Iowa Department of Transportation

