

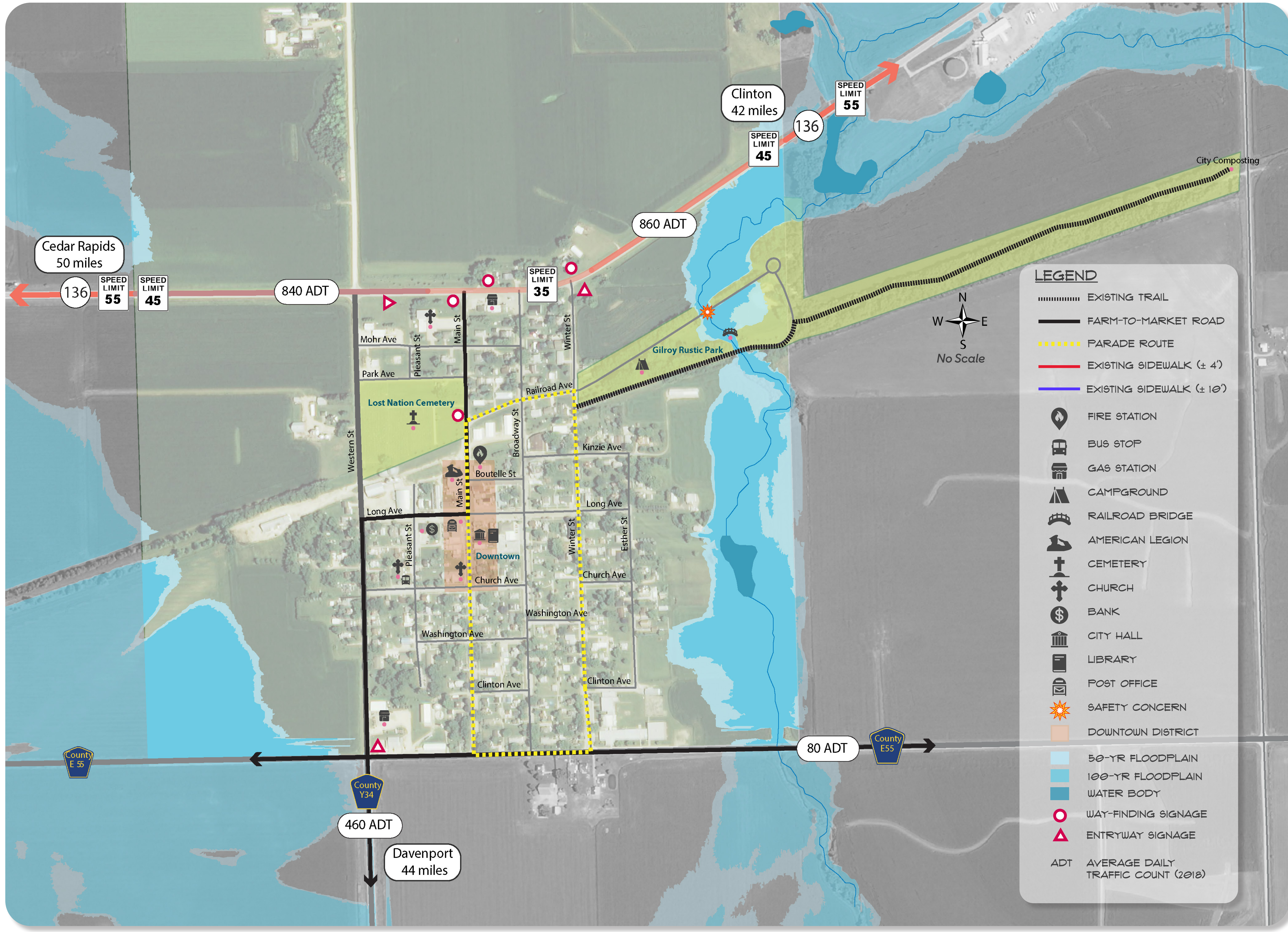
Transportation Inventory

Knowledge of the transportation systems in and around a community is critical for sustainable transportation enhancement planning. Lost Nation's transportation system includes roadways, sidewalks, and a recreational trail.

The Lost Nation visioning design team met with the Clinton County Engineer, East Central Intergovernmental Association (ECIA) personnel, and local officials to identify existing, past, and future transportation system capital improvements, maintenance activities and issues, and other transportation-related constraints and opportunities in the area.

Several transportation-related assets and opportunities include destinations and activities such as Gilroy Rustic Park and its new RV park and campground, Rustic Run Trail and the historic downtown.

Items of concern related to Lost Nation's transportation systems include uneven sidewalks with missing segments, lack of a pedestrian bridge in Gilroy Rustic Park, poor sidewalk and trail accessibility, the lack of a community-wide trail system, poor lighting along major walking routes, and sidewalk accessibility in the downtown.



Transportation Inventory Map



Downtown and Main Street



Gilroy Rustic Park creek crossing



Steps in downtown area



Rustic Run trail

Lost Nation Transportation Inventory

Flenker Land Architecture Consultants, LLC
 Landscape Architect: Meg K. Flenker, PLA, ASLA, CPESC, CPSWQ
 Intern: Haoyue (Karma) Yang
 Iowa State University | Trees Forever | Iowa Department of Transportation

