

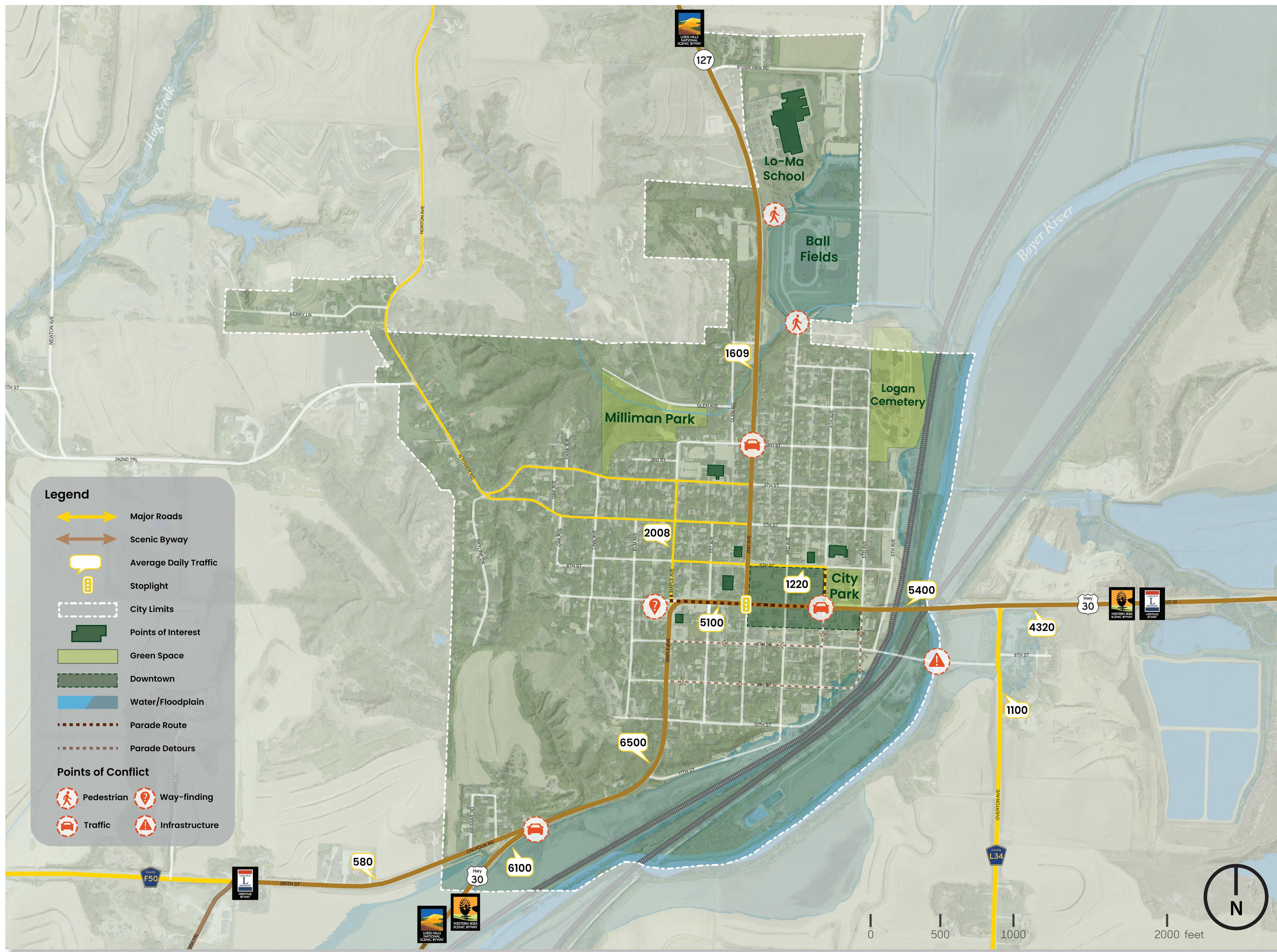
# Transportation Inventory and Analysis

Knowledge of the transportation systems in and around the community of Logan is critical for sustainable transportation enhancement planning. Transportation systems include paved and unpaved roadways, pedestrian and bike trails, waterways, and railroad lines.

The Logan visioning design team worked with Iowa Department of Transportation (IDOT) personnel and local officials to identify existing, past, and future transportation systems in the area and to discuss possible constraints and opportunities in terms of transportation. Most traffic in and through Logan comes from personal vehicles on Highways 30 and 127, which intersect at the town's single stoplight. Three National Scenic Byways—the Loess Hills Scenic Byway, Western Skies Scenic Byway, and Lincoln Highway Heritage Byway—connect Logan to neighboring communities. The Union Pacific Railroad follows the Boyer River through eastern Logan, providing freight transport across Iowa and 22 other states.

The community expressed interest in slowing highway traffic, improving access to attractions, and creating a designated pedestrian route to school. Key intersections would benefit from improved visibility and motorists traveling at lower speeds. Trail development would provide opportunities to link attractions and to promote walkability. While Highway 127 is the main road to Logan-Magnolia Community Schools, it does not have a pedestrian path or sidewalk, and many students seek alternative routes that they perceive to be safer than the highway.

Logan has some infrastructure concerns: flooding near the ball fields hinders residents' abilities to walk to school and use recreation amenities; an abandoned bridge over the Boyer River is perceived as unsafe; and the parade route on Highway 30 detours traffic onto side streets.



# Logan Transportation Inventory

**RDG Planning & Design**  
 LA: Bruce Niedermeyer, PLA, ASLA, LEED AP  
 Intern: Olivia Bolton  
 Iowa State University | Trees Forever | Iowa Department of Transportation

