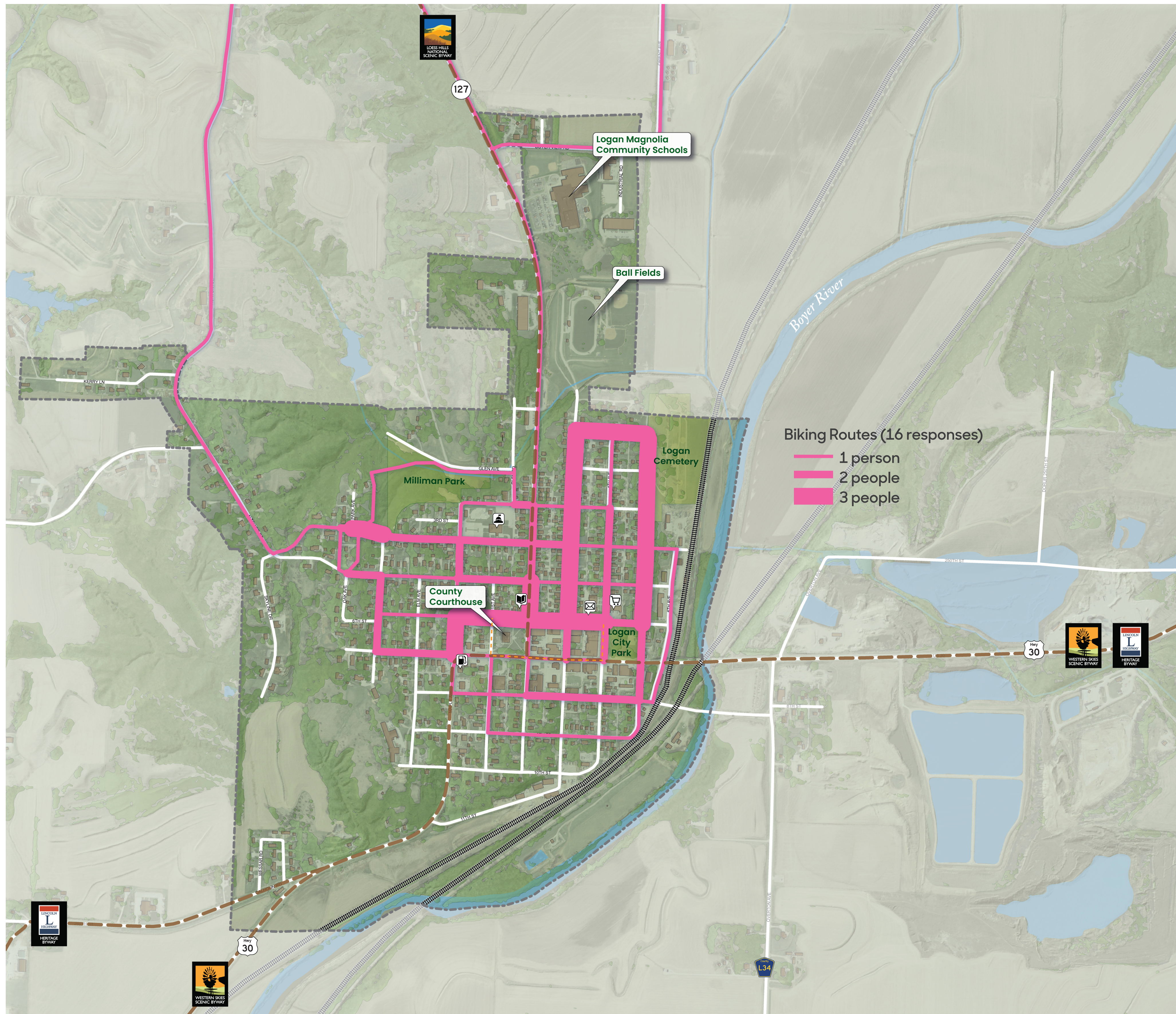


# Where They Bike

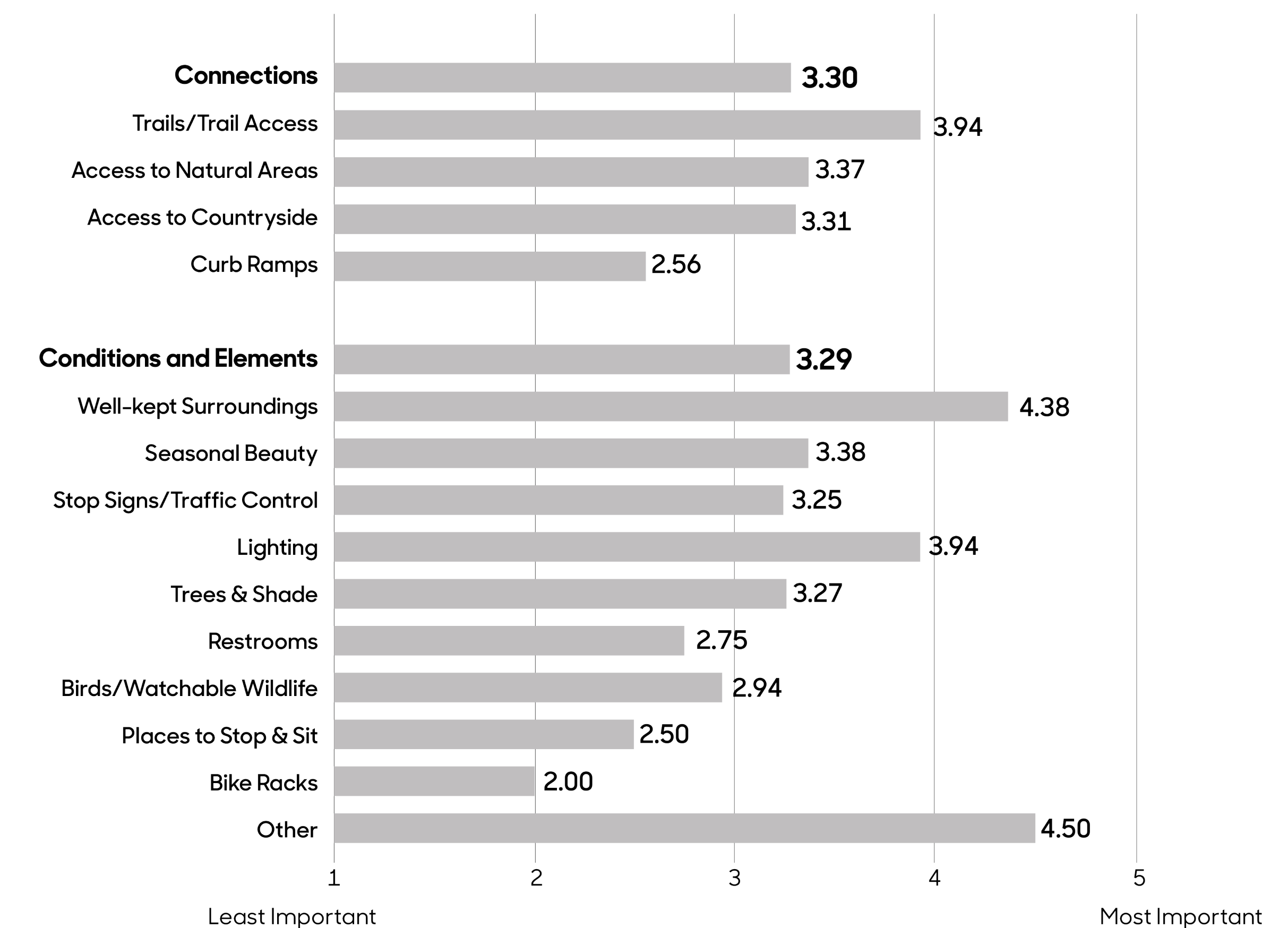
This map shows the biking routes identified by 16 survey respondents. The frequency that the routes are used is depicted by their width, with most frequently used routes being the thickest. Cyclists in Logan bike the city streets, most often N 5th Avenue, N 1st Street, and N 3rd Avenue, 6th Street in the downtown area, N Maple Avenue between 6th and 7th Streets, and W 4th Street near Milliman Park. A few cyclists ride out of town on Highway 127 and Norton Avenue.

# Why They Go That Way

On a scale of 1 to 5, with 5 being the most important, survey participants ranked the characteristics and features that made their biking experience better. These features are categorized as either "connections" or "conditions and elements." Logan participants consider connections and conditions/elements as nearly equally important, with mean values of 3.30 and 3.29, respectively. Access to trails is most important connection to survey respondents with a mean value of 3.94. In terms of conditions/elements, other factors that were not specified by respondents ranked highest at 4.50, followed by well-kept surroundings (4.38). Lighting is also important to cyclists, with a mean value of 3.94.



Map Source: Iowa Department of Natural Resources, "Natural Resources Geographic Information Systems Library," <http://www.igsb.uiowa.edu/nrgislib/>.



## Logan Biking Routes

### Transportation Behavior and Needs Survey

Julia Badenhop, Sandra Oberbroeckling, Chad Hunter

Iowa State University | Trees Forever | Iowa Department of Transportation