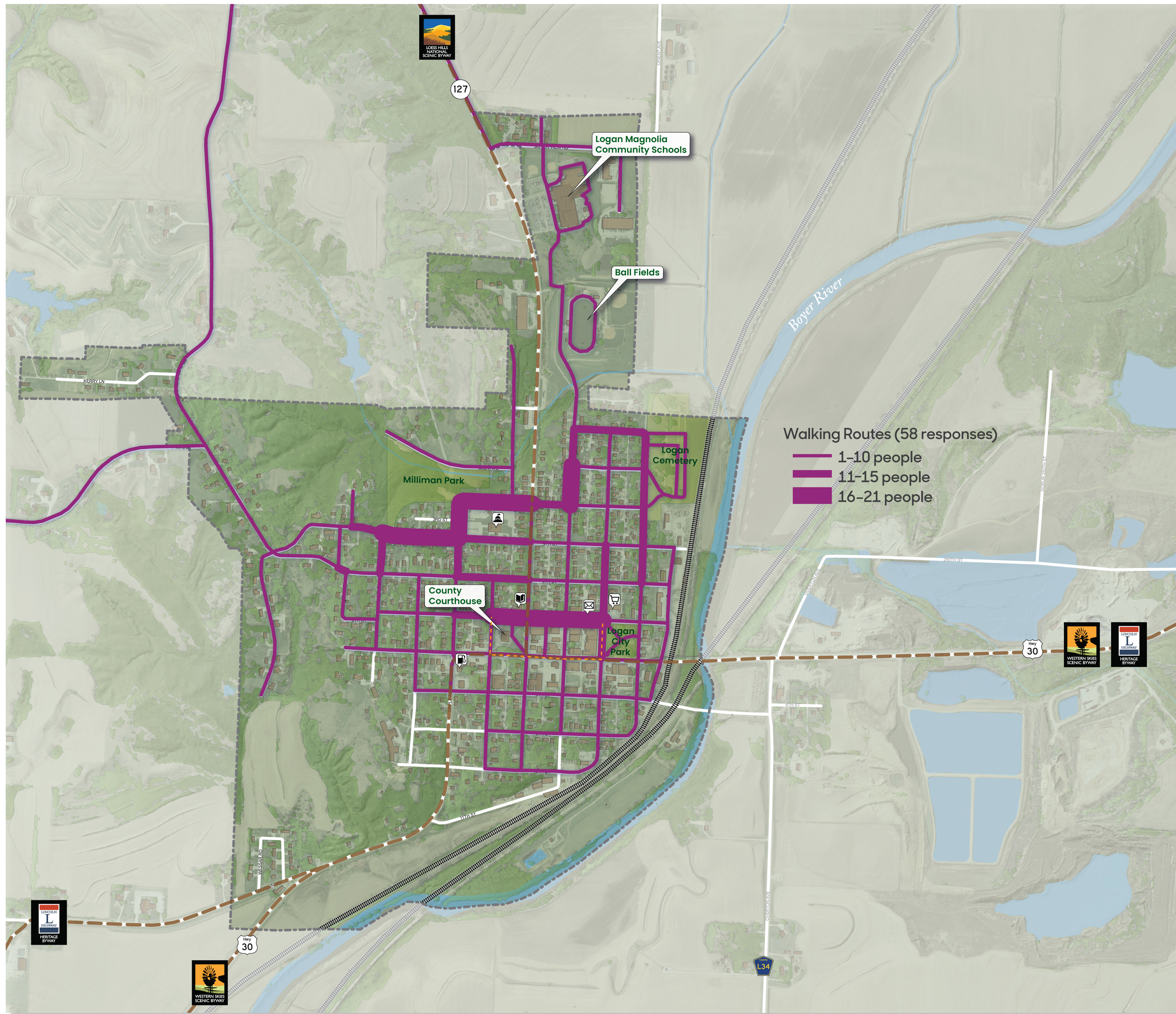
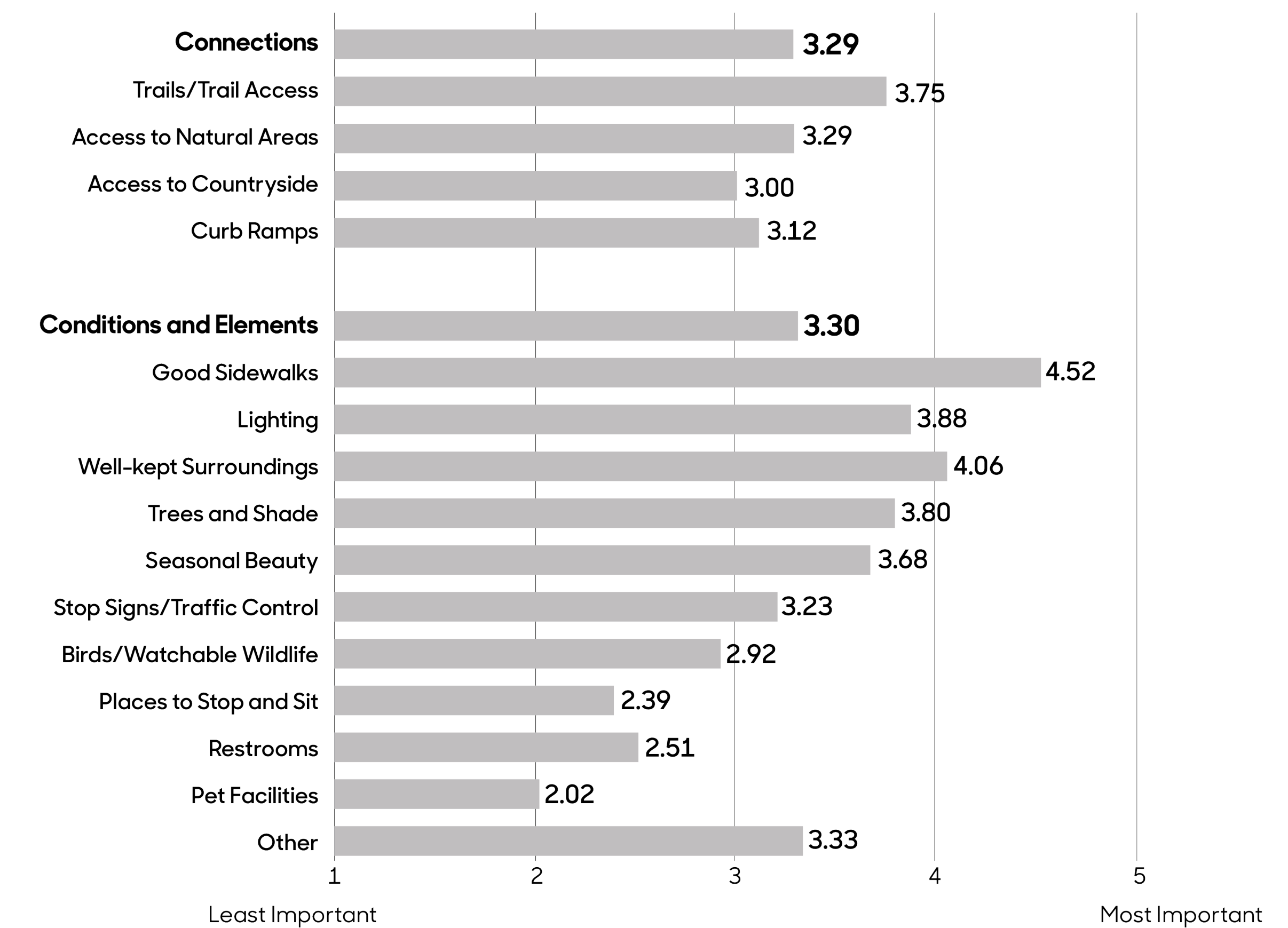


# Where They Walk

This map shows the walking routes identified by 58 survey respondents. The frequency that the routes are used is depicted by their width, with most frequently used routes being the thickest. Survey respondents indicated that they walk primarily along the streets of Logan, with the most frequently walked streets in town being W 3rd and W 4th Streets near Milliman Park, N 3rd Avenue between E 2nd and E 3rd Streets, and E 6th Street in the downtown area. In addition, some people walk the track and the sidewalks at the school and some walk at the cemetery. A few adventurous walkers take to Highway 127 and Norton Avenue out of town.

# Why They Go That Way

On a scale of 1 to 5, with 5 being the most important, survey participants ranked the characteristics and features that made their walking experience better. These features are categorized as either "connections" or "conditions and elements." Among Logan participants, connections and conditions/elements are almost equally important, with mean values of 3.29 and 3.30, respectively. In terms of connections, access to trails is most important with a mean value of 3.75. Good sidewalks (4.52) are the most important element to walkers, followed by well-kept surroundings (4.06) and lighting (3.88). Other significant factors include trees and shade (3.80) and seasonal beauty (3.68).



Map Source: Iowa Department of Natural Resources, "Natural Resources Geographic Information Systems Library," <http://www.igsb.uiowa.edu/nrgislib/>.

## Logan Walking Routes

### Transportation Behavior and Needs Survey

Julia Badenhop, Sandra Oberbroeckling, Chad Hunter

Iowa State University | Trees Forever | Iowa Department of Transportation