

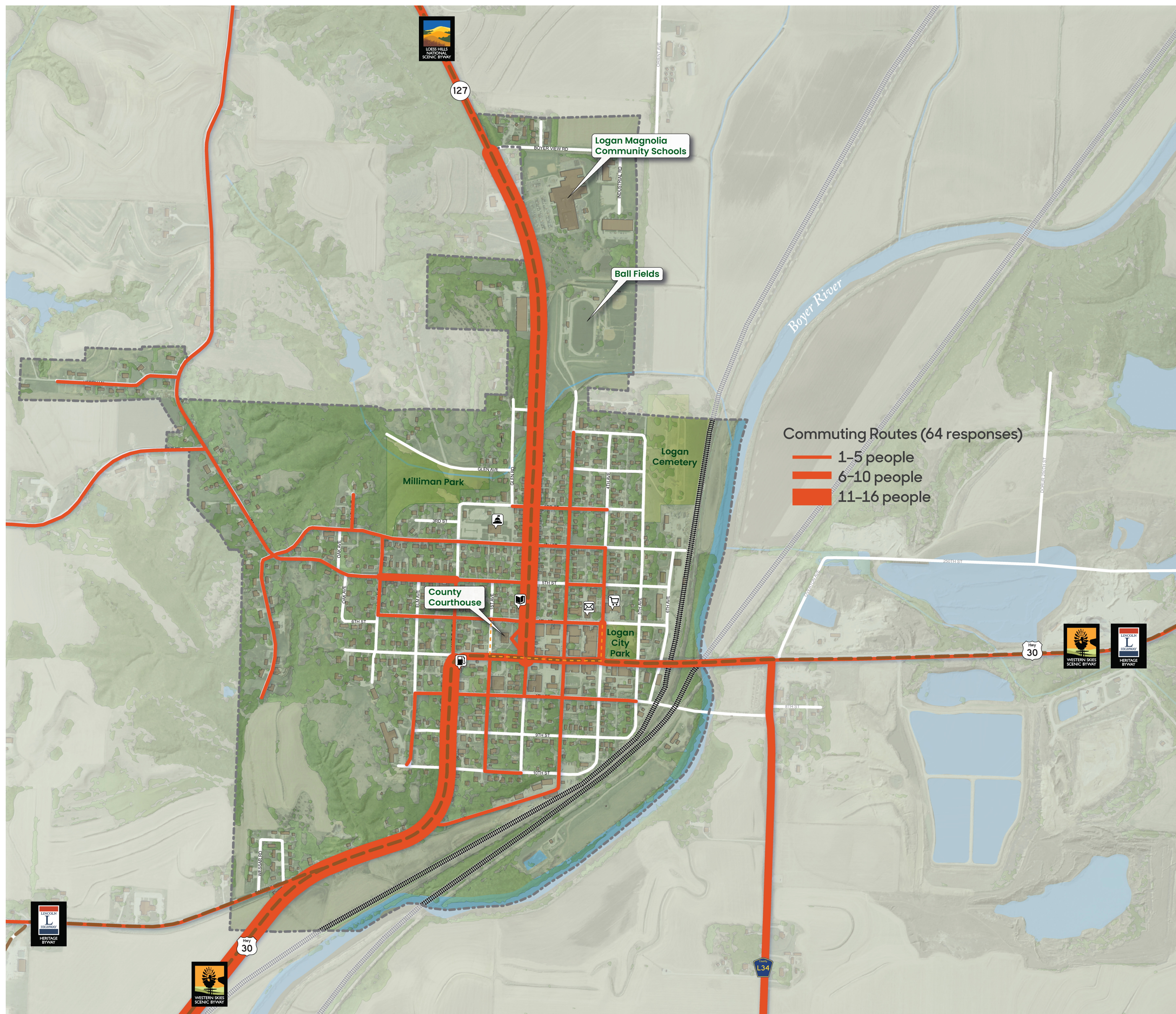
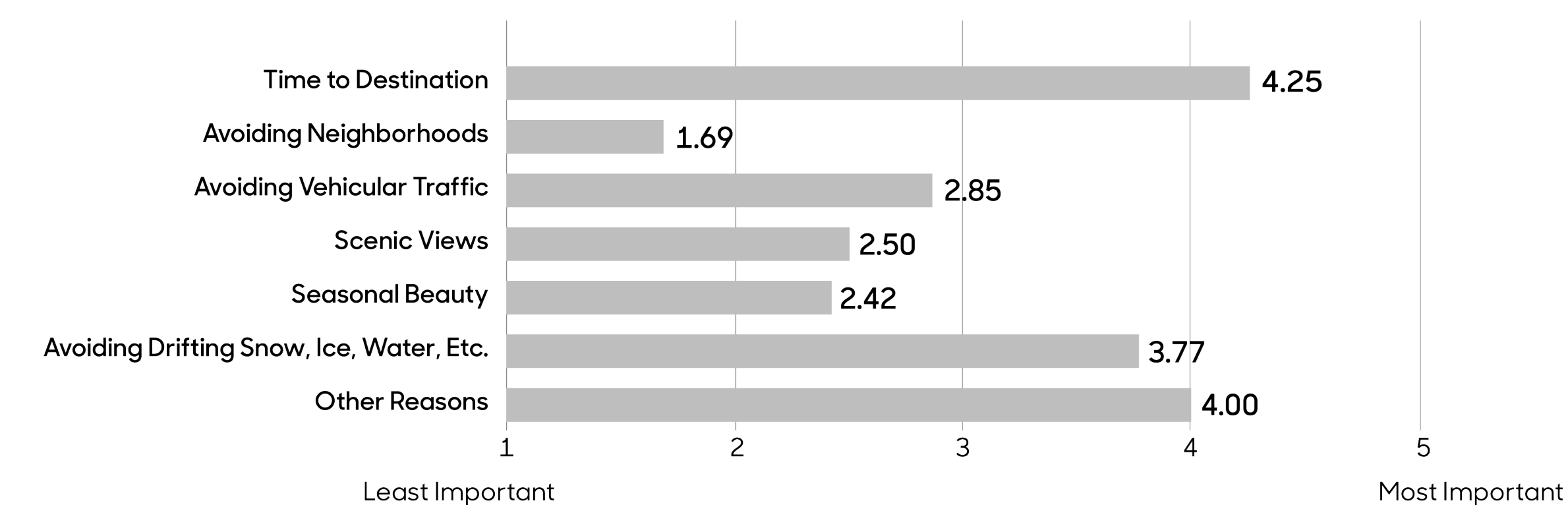
How They Get There

This map shows the commuting routes identified by 64 survey respondents. The frequency that the routes are used is depicted by their width, with most frequently used routes being the thickest. The primary commuting corridors into and out of Logan are Highway 127 from the north and U.S. Highway 30 from the east and south. Some commuters enter and leave town via U.S. 30 and County Road L34. Heavily traveled streets in town include N 2nd Avenue (Highway 127), W 7th Street (U.S. 30), and a portion of W 5th Street.

The circulation patterns that emerge when routes for biking, walking, and commuting are overlaid suggest suitable types of transportation enhancements. For example, where pedestrian and vehicular traffic intersect, such improvements could include creating better visibility, defining crossing points, or improving signage.

Why They Go That Way

On a scale of 1 to 5, with 5 being the most important, survey participants ranked the characteristics and features that factored into their choice of commuting route. Among Logan participants, time to destination is the most important factor, with a mean value of 4.25, followed by other reasons such as the quality of the road, safety, and avoiding potholes and loose gravel. Avoiding weather-related issues such as snow and ice is also considered important, with a mean value of 3.77. Scenic views, seasonal beauty, and avoiding neighborhoods and avoiding vehicular traffic are not critical factors in determining commuting routes.



Map Source: Iowa Department of Natural Resources, "Natural Resources Geographic Information Systems Library," <http://www.igsb.uiowa.edu/nrgislib/>.

Logan Commuting Routes

Transportation Behavior and Needs Survey

Julia Badenhop, Sandra Oberbroeckling, Chad Hunter

Iowa State University | Trees Forever | Iowa Department of Transportation

