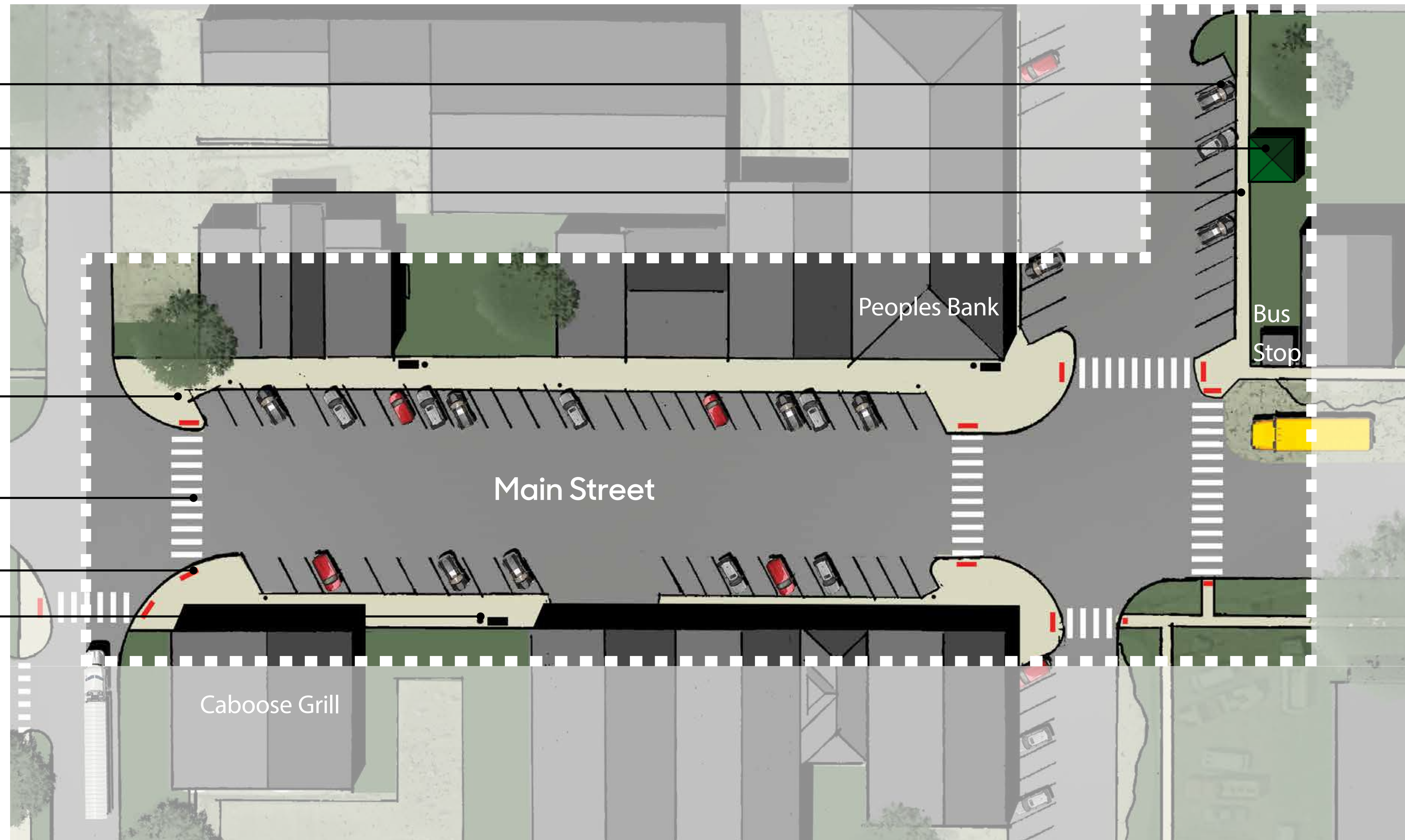


- Proposed Parking Area
- Proposed Gazebo
- Proposed Sidewalk
- Proposed Bump-outs
- Highly Visible Crosswalks
- Detectable Warning Tiles
- Proposed Amenities
  - Benches
  - Pedestrian Lights
  - Trash Receptacle
  - Planters

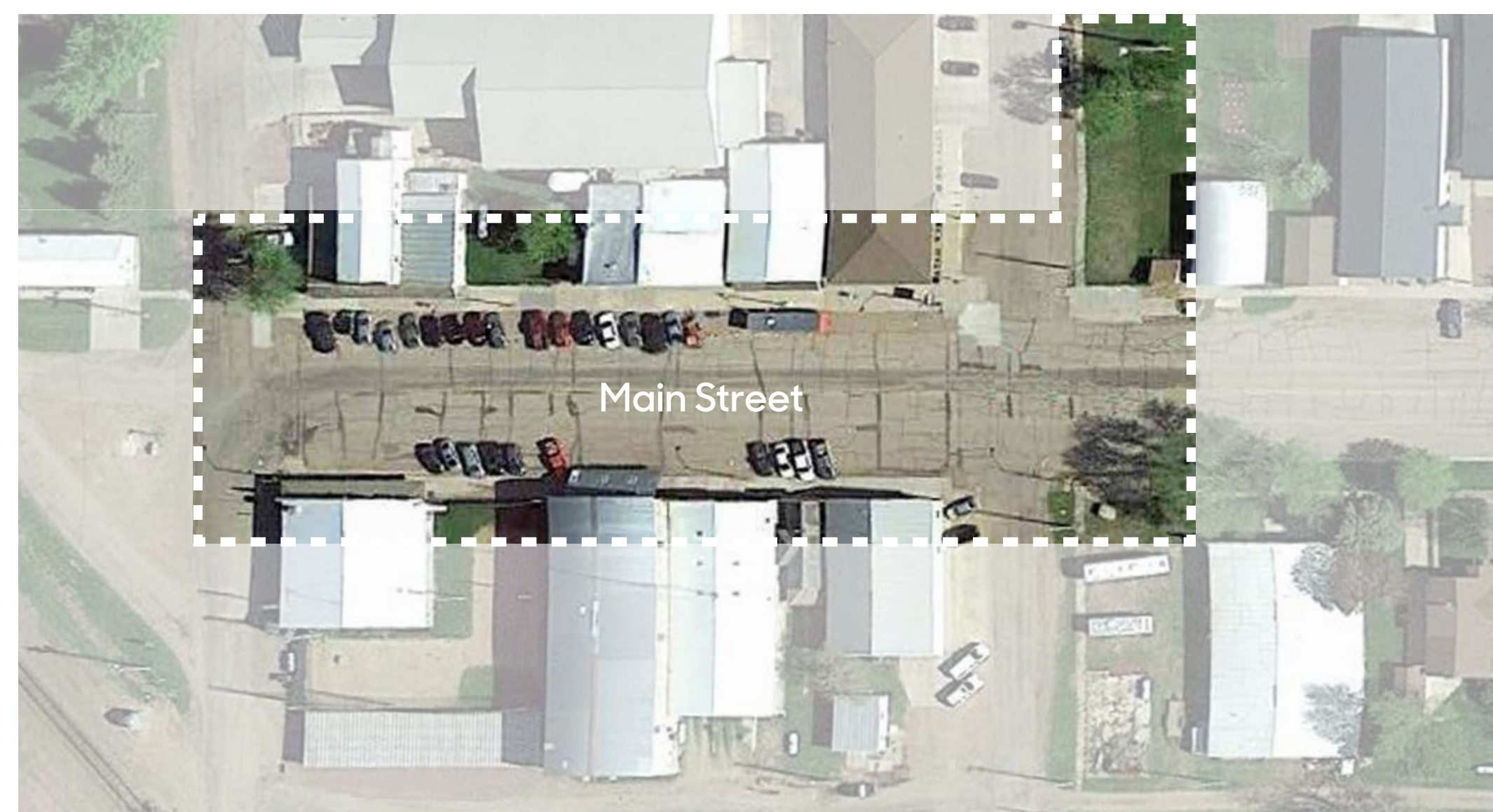


Existing conditions of Main Street. A project is in place to correct the elevation issues and make Main Street ADA accessible by 2018. The steering committee requested proposing bump outs at the intersections, pedestrian scale lighting and site amenities for Main Street.

### Main Street Improvements

Main Street will be reconstructed and made ADA accessible by the County beginning Fall of 2017. The steering committee would like to extend the project to the pedestrian zones by proposing bump-outs at the intersections of Main and Clinton Streets and Main and Thomas Streets. Bump-outs would solve current vehicular visibility issues and create a safer pedestrian experience.

Enhancing Lester's reconstructed Main Street with site amenities such as benches, pedestrian lighting, trash receptacles and planters would improve the neatness and quality of downtown streets and its attractiveness as a business area. Improvements to the current bus shelter area, extends to the alley between Main and 4th Streets, would include a new shelter, parking area, and sidewalk.



Above: Proposed conceptual design for Main Street

Left: Existing plan view of Main Street

Right: Proposed amenities include benches, trash receptacles, planters and pedestrian scale lighting



# Lester Main Street Improvements

## RITLAND+KUIPER Landscape Architects

Landscape Architects: Craig Ritland, FASLA & Samantha Price, PLA  
 Landscape Architecture Intern: Peter Reyland  
 Iowa State University | Trees Forever | Iowa Department of Transportation

