



Proposed design concepts in Independence.

### Concept Overview

During the Design Workshop Open House, residents were encouraged to come learn about the Community Visioning process, review the analysis that had been done, and give input on design concepts that were guided by the steering committee. Residents had an opportunity to review all the analysis boards provided by Iowa State University, interact with the design team, and leave feedback on the projects. The open house was an essential part of the process for the design team to better understand and finalize conceptual ideas based on the community's desires.

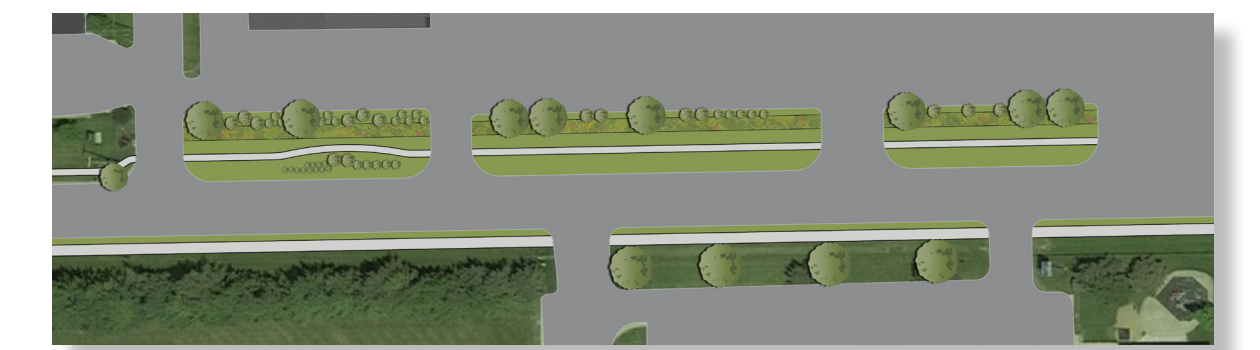
1st Street W improvements focus on safety, drainage issues, aesthetics, and amenities. During the Design Workshop, residents were able to manipulate a streetscape model that showed different elements such as lawn areas, trees, trails, sidewalks, and bioretention areas. Residents used Wikki Stix to show alternative routes that would alleviate congestion on 1st Street W. The design team used input from both exercises to shape the conceptual design of 1st Street W.

Residents of all ages expressed interest in creating more trail and sidewalk connections throughout Independence. Workshop participants had the opportunity to draw the routes they frequent or wish to utilize safely. From this activity, the design team was able to prioritize new sidewalk connections and the desired routes for walking trails. Community members also showed an interest in adding amenities to all the trails throughout Independence.

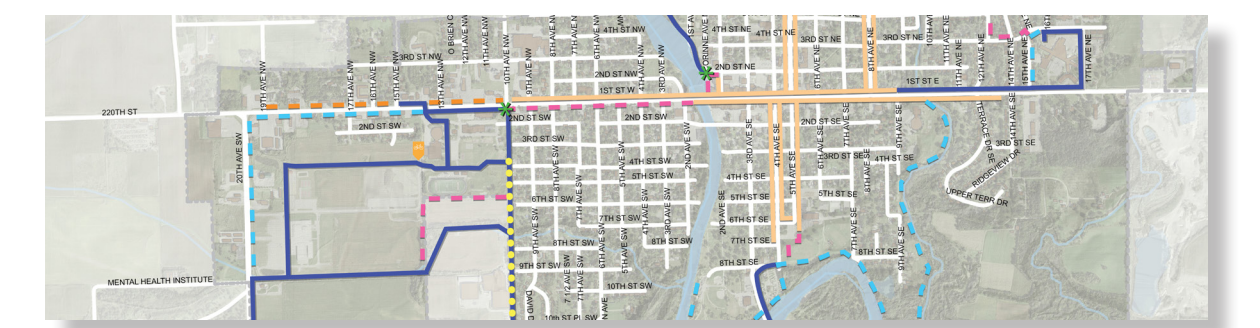
Using the existing Independence logo, adding additional way-finding signage throughout Independence can help residents and visitors find destinations in town such as Liberty Trail or Riverwalk Park. Additionally, signage can help with "branding" of the community and create a cohesive palette for signage.



Board 8a: 1st Street W Improvements



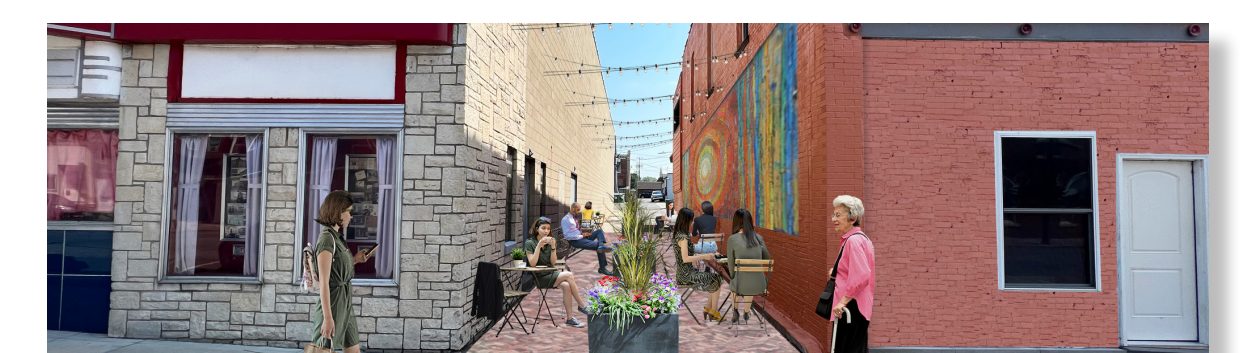
Board 8b: 1st Street W Improvements



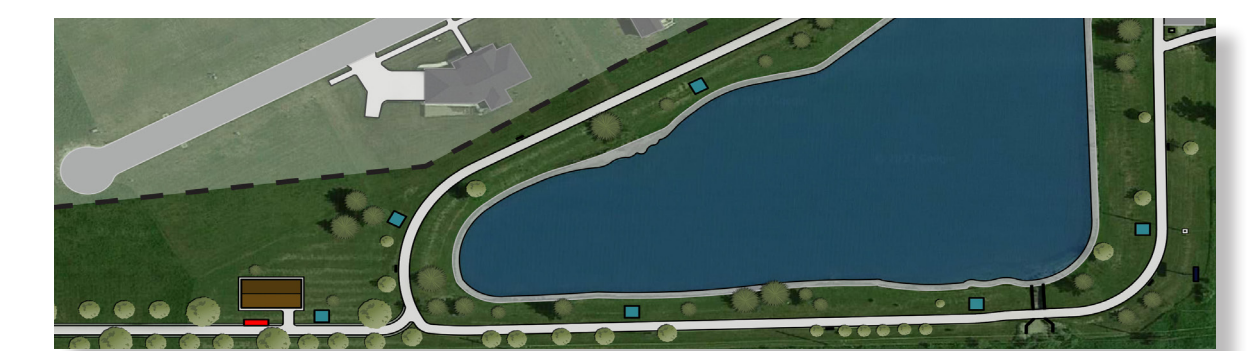
Board 9a: Trail Connections



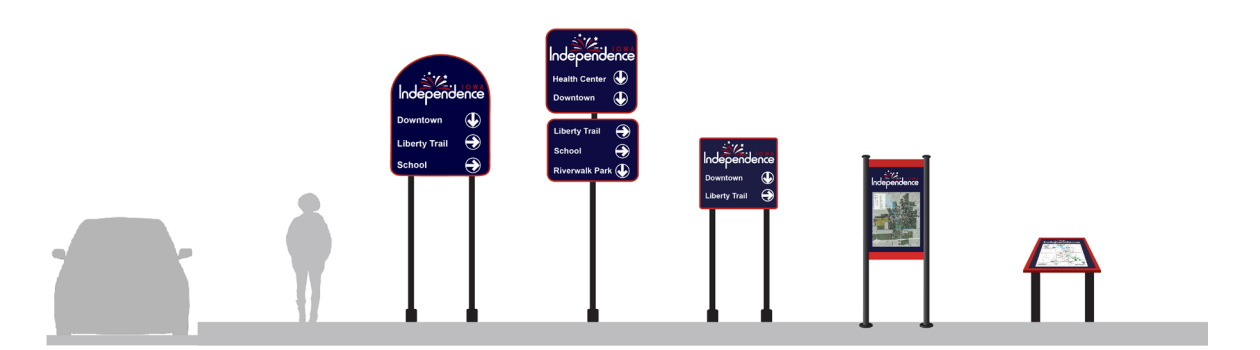
Board 9b: Trail Connections



Board 9c: Trail Connections



Board 10: Triangle Park Trailhead



Board 11: Signage & Way-finding

# Independence

## Concept Overview

### RITLAND+KUIPER Landscape Architects

Landscape Architect: Samantha Price, ASLA

Intern: Andrea Fager, Iowa State University

Iowa State University | Trees Forever | Iowa Department of Transportation

