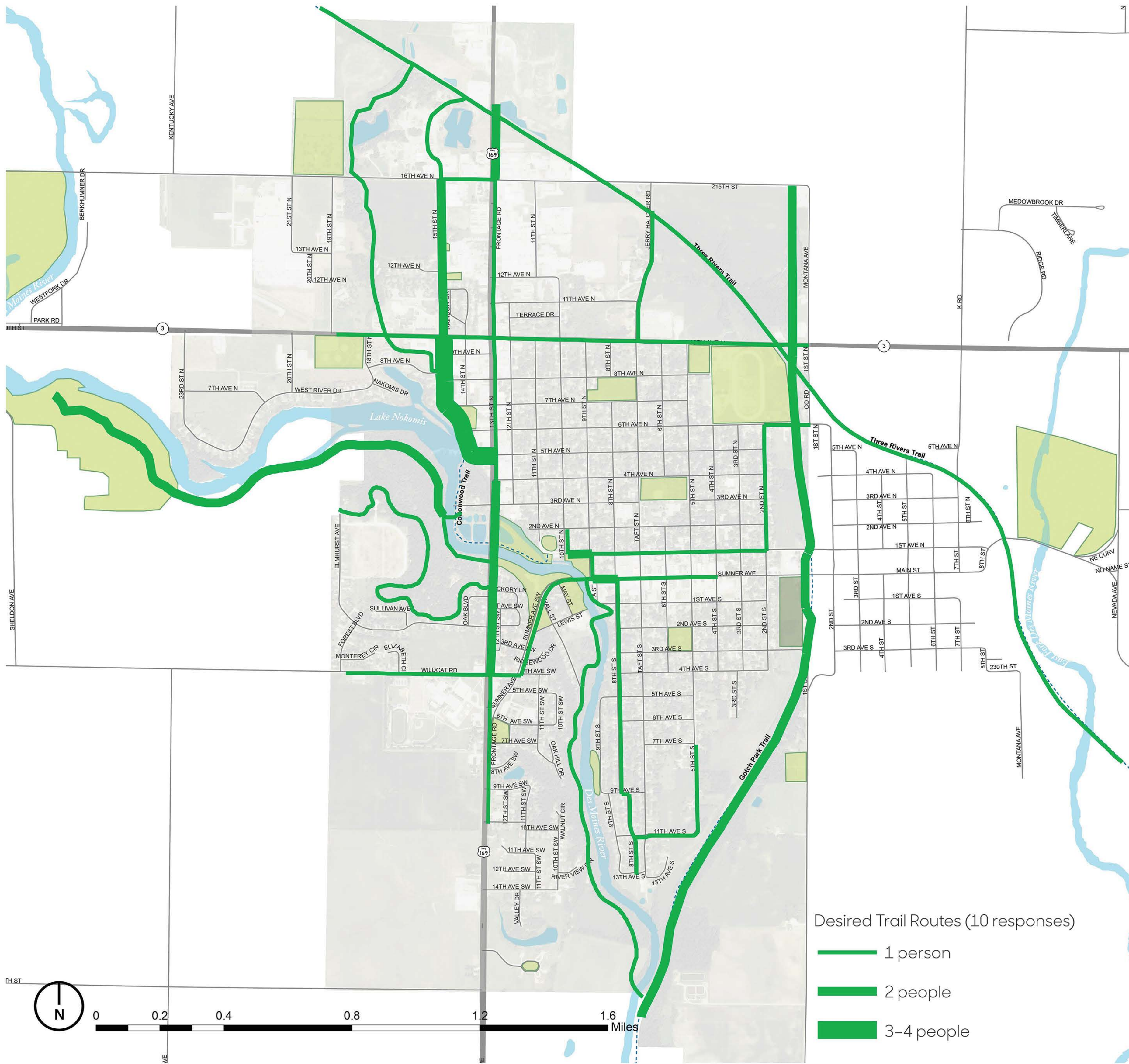


Where People Want Trails

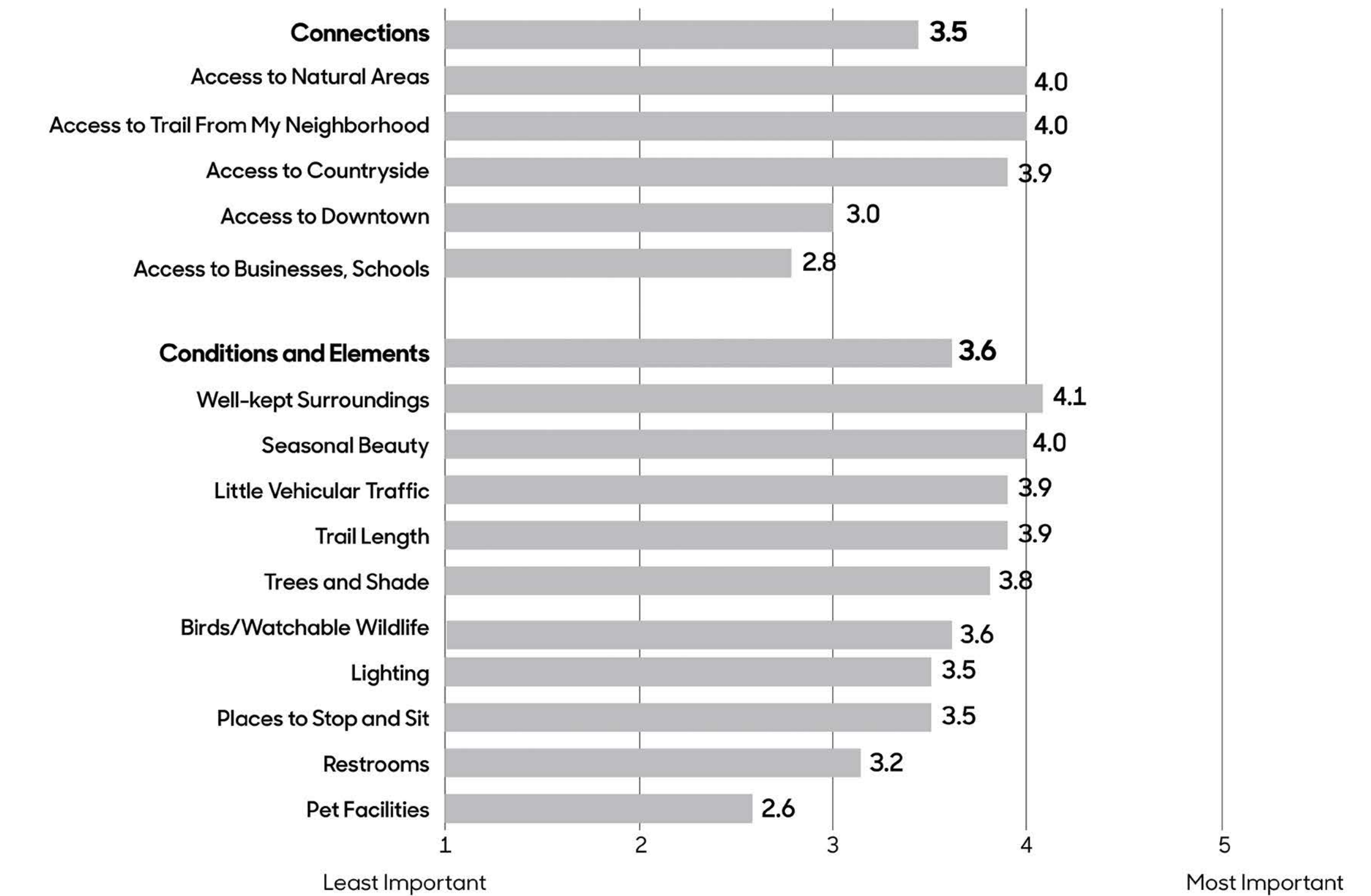
This map shows the desired trail routes identified by 10 survey respondents. The frequency that the routes are used is depicted by their thickness, with most frequently used routes being the thickest. The most desired trail route among survey respondents is a connection between Highways 3 and 169 (13th Street North) via 15th Street North. This finding supports what focus-group participants said regarding accessibility to the new Fareway Store located along Highway 3. Another frequently identified route is along the Des Moines River from Cottonwood Trail to Joe Sheldon County Park, which also supports information gathered during focus groups. Survey participants identified additional connections to Gotch Park and Three Rivers Trails as well.



Map Source: Iowa Department of Natural Resources, "Natural Resources Geographic Information Systems Library," <http://www.igsb.uiowa.edu/nrgislib/>.

Important Trail Features

On a scale of 1 to 5, with 5 being the most important, survey participants ranked the characteristics and features that made their trail experience better. These features are categorized as either "connections" or "conditions and elements." Among Humboldt participants, connections and conditions/elements are nearly equally important, with mean values of 3.5 and 3.6, respectively. In terms of connections, access to the trail from my neighborhood and access to natural areas are equally important with a mean value of 4.0. Well-kept surroundings are the most important element to trail users (4.1), followed by seasonal beauty (4.0).



Humboldt Desired Trail Routes

Transportation Behavior and Needs Survey

Julia Badenhop, Sandra Oberbroeckling, Matthew Gordy, Miao Fangzhou

Iowa State University | Trees Forever | Iowa Department of Transportation

