

Concept Overview

After meetings with the steering committee and other members of the community, the design team has proposed several concepts for Hampton based on the goals identified. Below is an outline of the proposed concepts which correspond to the map:

1. Trail System

The design proposal for improvements to the trail network in town address residents' desire to have more options when getting around Hampton and connecting to important community destinations.

2. Parks and Recreation

Improvements to the aged portions of the park system, along with new elements to further enhance the public space and encourage safe recreation.

3. Circulation Improvements

Areas with safety concerns and limited pedestrian access make it difficult to get around some parts of Hampton. Strategic sidewalk and intersection improvements aim to address these challenges.

4. Downtown Revitalization

West 1st Street and the downtown core have a lot of history and beauty. Hampton can impress visitors and residents with new street configurations, landscaping, and site furnishings to further enhance their Main Street appeal.

5. Way-finding and Identity Signage

An attractive and cohesive signage scheme incorporating elements of existing community signage and enhancing Hampton's visual appearance and legibility.

Trail System

Recreational connections to community destinations and trailhead enhancements.

Parks and Recreation

Enhance and improve outdoor recreation spaces.

Way-finding and Identity Signage

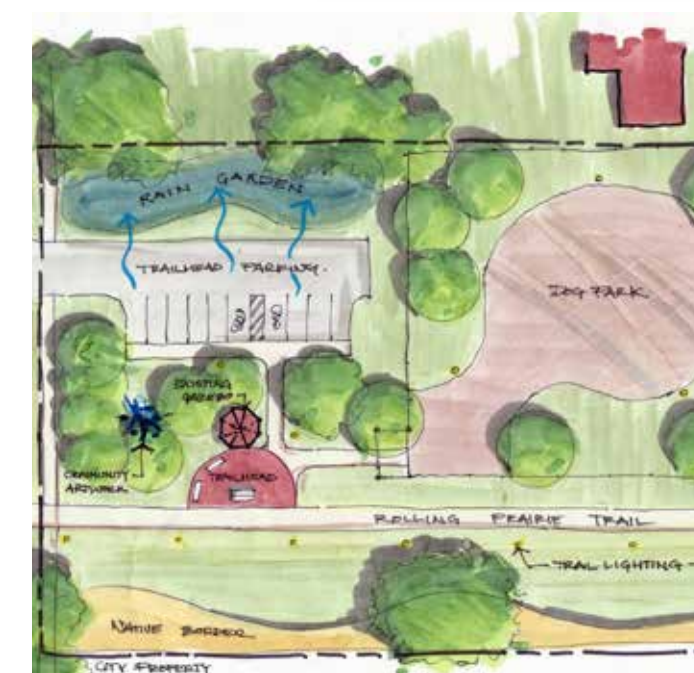
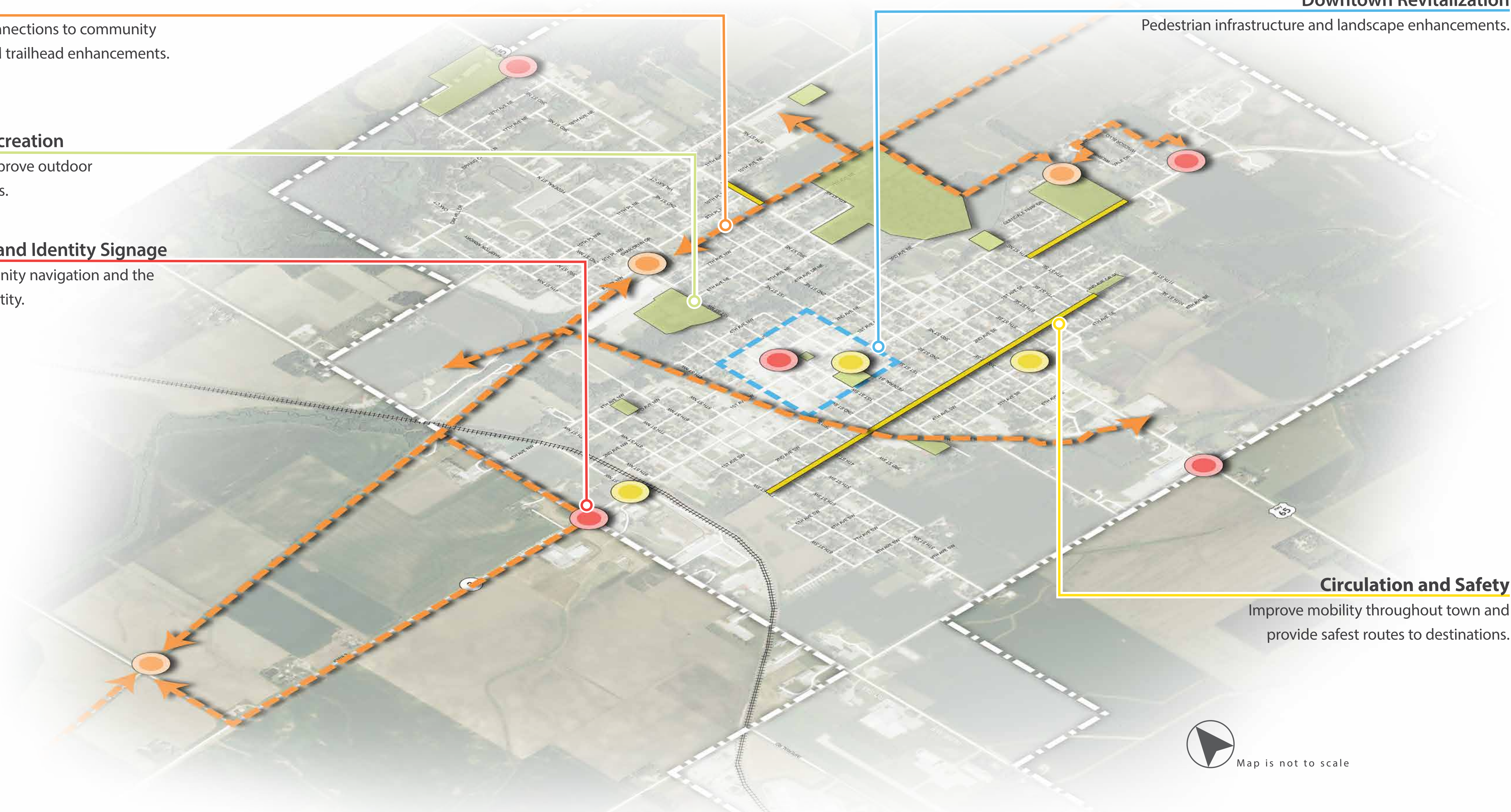
Improve community navigation and the community identity.

Downtown Revitalization

Pedestrian infrastructure and landscape enhancements.

Circulation and Safety

Improve mobility throughout town and provide safest routes to destinations.



Board 8c.



Board 9a.



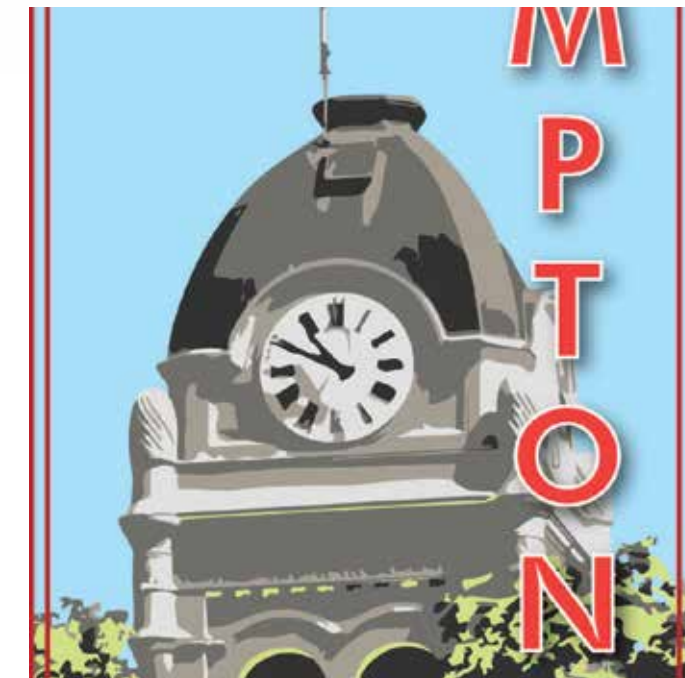
Board 9b.



Board 10.



Board 11a.



Board 12b.

Hampton Concept Overview

Landscape Architects: David Stokes, PLA, ASLA, Eric Doll, ASLA, Intern: Samuel Thompson, Jeffrey L. Bruce and Company, LLC

Iowa Department of Transportation

Trees Forever

ISU Landscape Architecture Extension

ISU Extension Community and Economic Development

IOWA'S
LIVING
ROADWAYS
Summer 2016